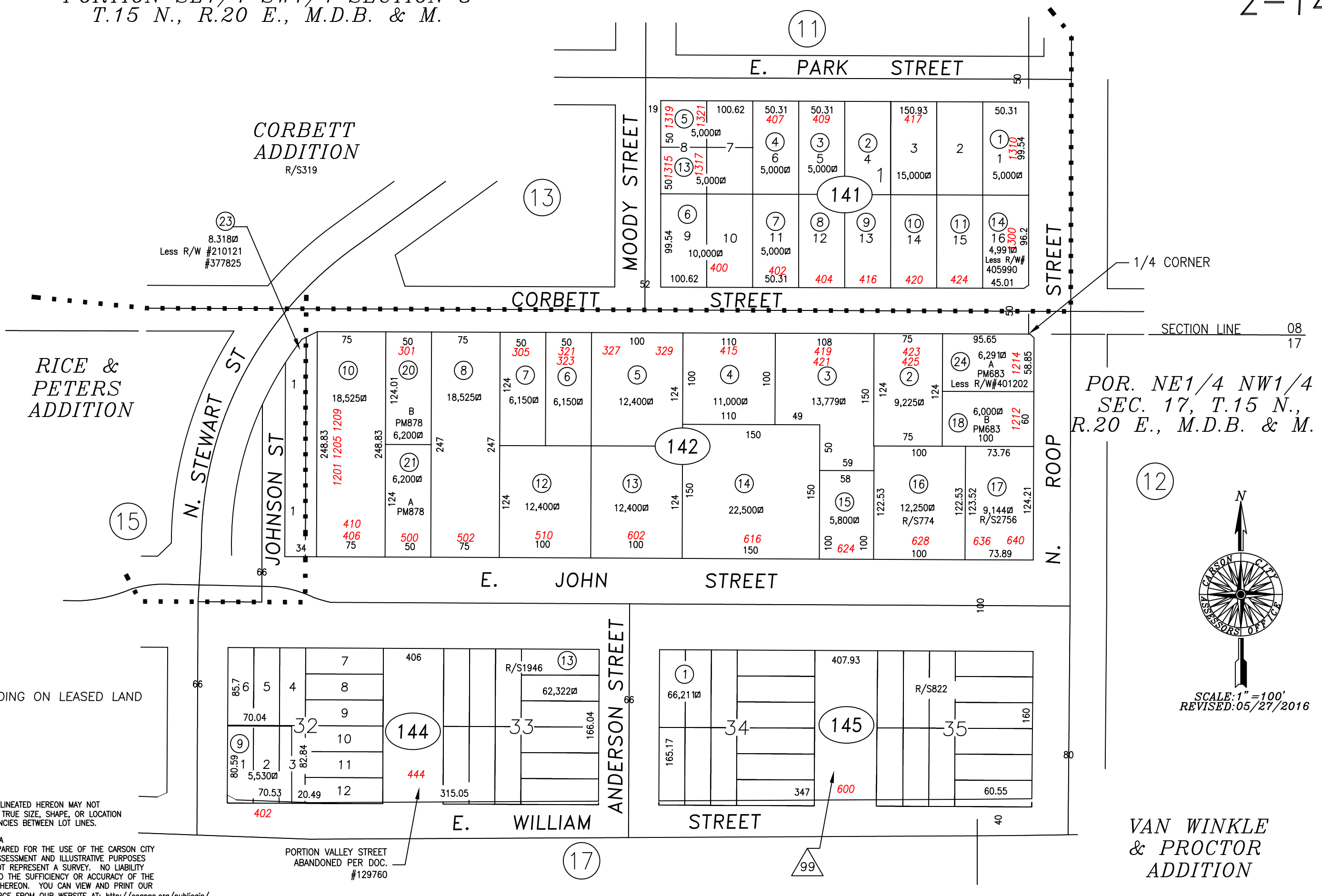
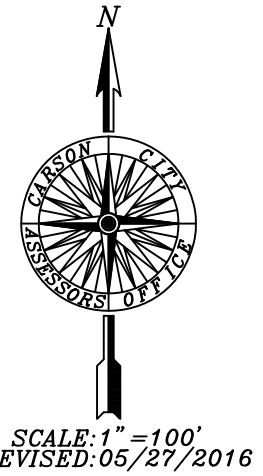


PORTION SE1/4 SW1/4 SECTION 8  
T.15 N., R.20 E., M.D.B. & M.



POR. NE1/4 NW1/4  
SEC. 17, T.15 N.,  
R.20 E., M.D.B. & M.



VAN WINKLE  
& PROCTOR  
ADDITION

△ BUILDING ON LEASED LAND

NOTE  
SOME PARCELS DELINEATED HEREON MAY NOT  
BE PRESENTED IN TRUE SIZE, SHAPE, OR LOCATION  
DUE TO DISCREPANCIES BETWEEN LOT LINES.

CARSON CITY, NEVADA  
THIS MAP IS PREPARED FOR THE USE OF THE CARSON CITY  
ASSESSOR FOR ASSESSMENT AND ILLUSTRATIVE PURPOSES  
ONLY, IT DOES NOT REPRESENT A SURVEY. NO LIABILITY  
IS ASSUMED AS TO THE SUFFICIENCY OR ACCURACY OF THE  
DATA DELINEATED HEREON. YOU CAN VIEW AND PRINT OUR  
MAPS AT NO CHARGE FROM OUR WEBSITE AT: <http://ccapps.org/publicgis/>

PORTION VALLEY STREET  
ABANDONED PER DOC.  
#129760