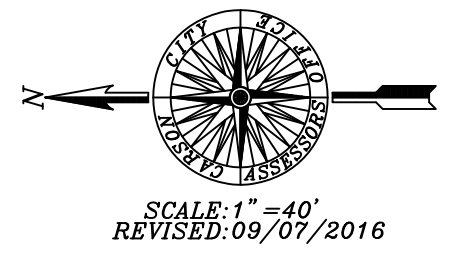
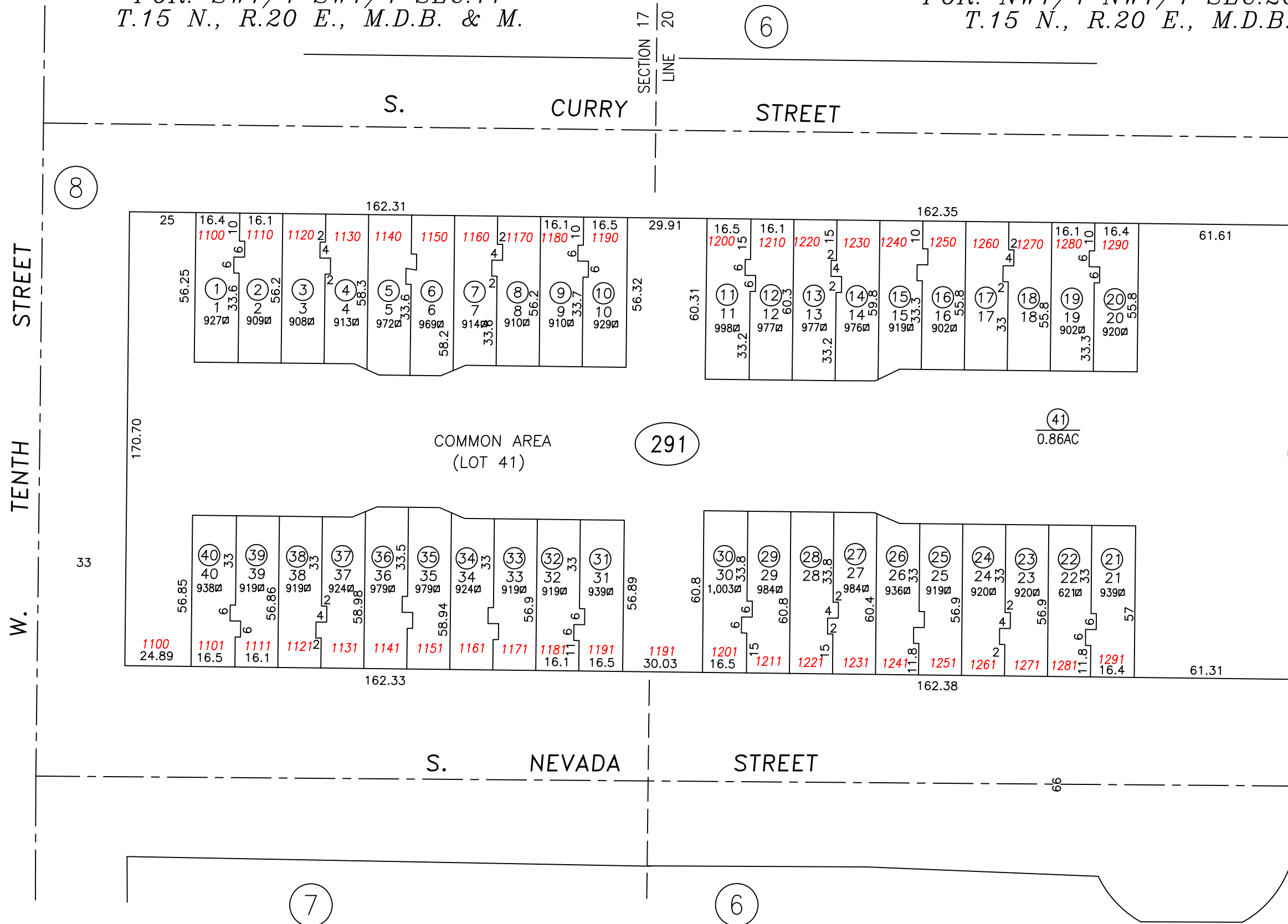


POR. SW1/4 SW1/4 SEC.17
T.15 N., R.20 E., M.D.B. & M.

POR. NW1/4 NW1/4 SEC.20
T.15 N., R.20 E., M.D.B. & M.



THE ESPLINADE
 A PLANNED UNIT DEVELOPMENT
 RECORDED 12/4/69

UPDATED PAGE
 CARSON CITY, NEVADA
 THIS MAP IS PREPARED FOR THE USE OF THE CARSON CITY
 ASSESSOR FOR ASSESSMENT AND ILLUSTRATIVE PURPOSES
 ONLY. IT DOES NOT REPRESENT A SURVEY. NO LIABILITY
 IS ASSUMED AS TO THE SUFFICIENCY OR ACCURACY OF THE
 DATA DELINEATED HEREON. YOU CAN VIEW AND PRINT OUR
 MAPS AT NO CHARGE FROM OUR WEBSITE AT: <http://ccapps.org/publicgis/>