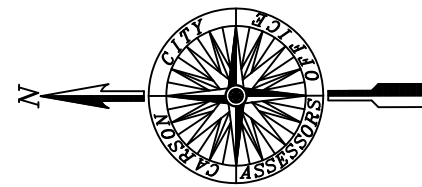
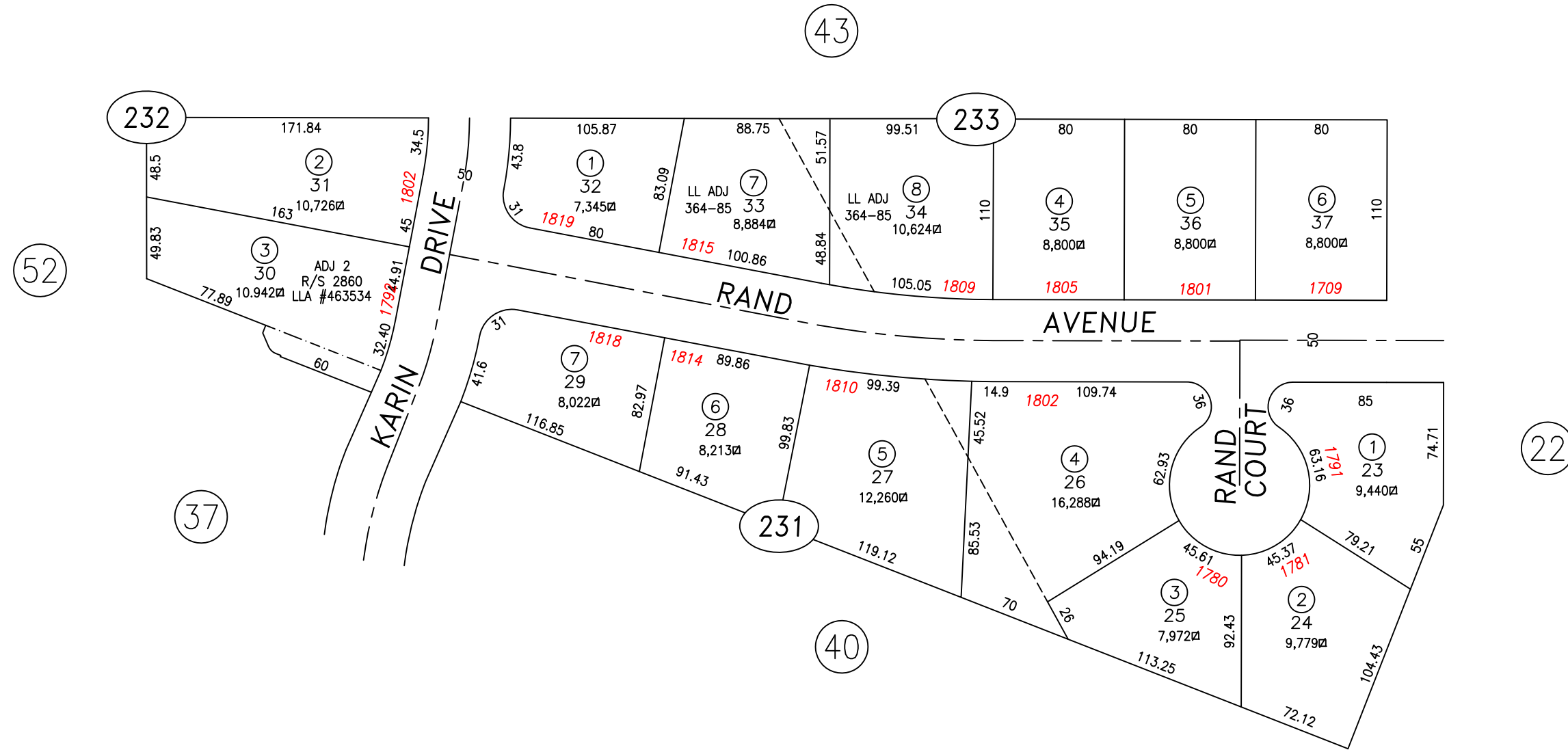


PORTION NW1/4 SW1/4 SECTION 9
T.15 N., R.20 E., M.D.B. & M.



SCALE: 1" = 80'
REVISED: 04/19/2016

UNIT NO. 2
OLIVER SUBDIVISION
RECORDED 1/26/66

PARCEL 002-232-01 IS NOW 002-232-03 PER: R/S 2860 LLA #463534

CARSON CITY, NEVADA
THIS MAP IS PREPARED FOR THE USE OF THE CARSON CITY
ASSESSOR FOR ASSESSMENT AND ILLUSTRATIVE PURPOSES
ONLY, IT DOES NOT REPRESENT A SURVEY. NO LIABILITY
IS ASSUMED AS TO THE SUFFICIENCY OR ACCURACY OF THE
DATA DELINEATED HEREON. YOU CAN VIEW AND PRINT OUR
MAPS AT NO CHARGE FROM OUR WEBSITE AT: <http://ccapps.org/publicgis/>