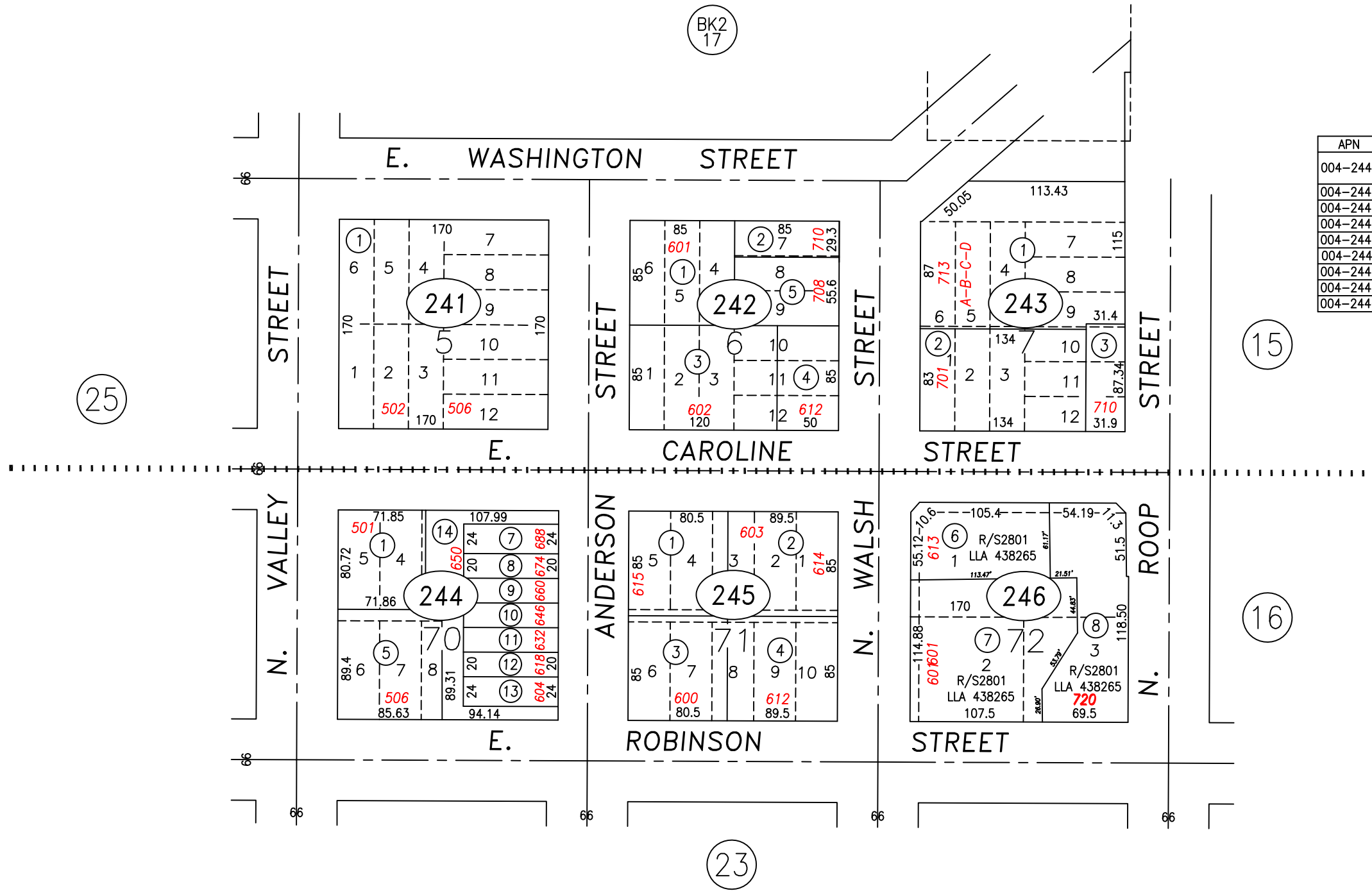


VAN WINKLE & PROCTOR ADDITION

| R/W & ALLEY ABANDONMENTS |                         |                    |
|--------------------------|-------------------------|--------------------|
| BLOCK                    | DOCUMENT                | DATE               |
| 70                       | BK 87 PG 431<br>#466906 | 7/22/69<br>8/10/16 |
| 71                       | BK 143 PG 281           | 1973               |
| 72                       | DOC # 422157            | 5/10/12            |



| APN        | LOT # | AREA  | NOTES       | DOCUMENTS              |
|------------|-------|-------|-------------|------------------------|
| 004-244-05 |       | 7,627 |             | R/S2832<br>LLA #450792 |
| 004-244-07 | 1     | 1,848 |             | #2902<br>#471591       |
| 004-244-08 | 2     | 1,540 |             |                        |
| 004-244-09 | 3     | 1,540 |             |                        |
| 004-244-10 | 4     | 1,540 |             |                        |
| 004-244-11 | 5     | 1,540 |             |                        |
| 004-244-12 | 6     | 1,540 |             |                        |
| 004-244-13 | 7     | 1,848 |             |                        |
| 004-244-14 | 8     | 5,745 | COMMON AREA |                        |

PARCEL 004-244-06 IS NOW PARCELS 004-244-07, 08,09,10,11,12,13 & 14

NOTE  
SOME PARCELS DELINEATED HEREON MAY NOT  
BE PRESENTED IN TRUE SIZE, SHAPE, OR LOCATION  
DUE TO DISCREPANCIES BETWEEN LOT LINES.  
CARSON CITY, NEVADA  
THIS MAP IS PREPARED FOR THE USE OF THE CARSON CITY  
ASSESSOR FOR ASSESSMENT AND ILLUSTRATIVE PURPOSES  
ONLY, IT DOES NOT REPRESENT A SURVEY. NO LIABILITY  
IS ASSUMED AS TO THE SUFFICIENCY OR ACCURACY OF THE  
DATA DELINEATED HEREON. YOU CAN VIEW AND PRINT OUR  
MAPS AT NO CHARGE FROM OUR WEBSITE AT: <http://ccapps.org/publicgis/>



SCALE: 1" = 100'  
REVISED: 01/23/2017

MUSSER DIVISION