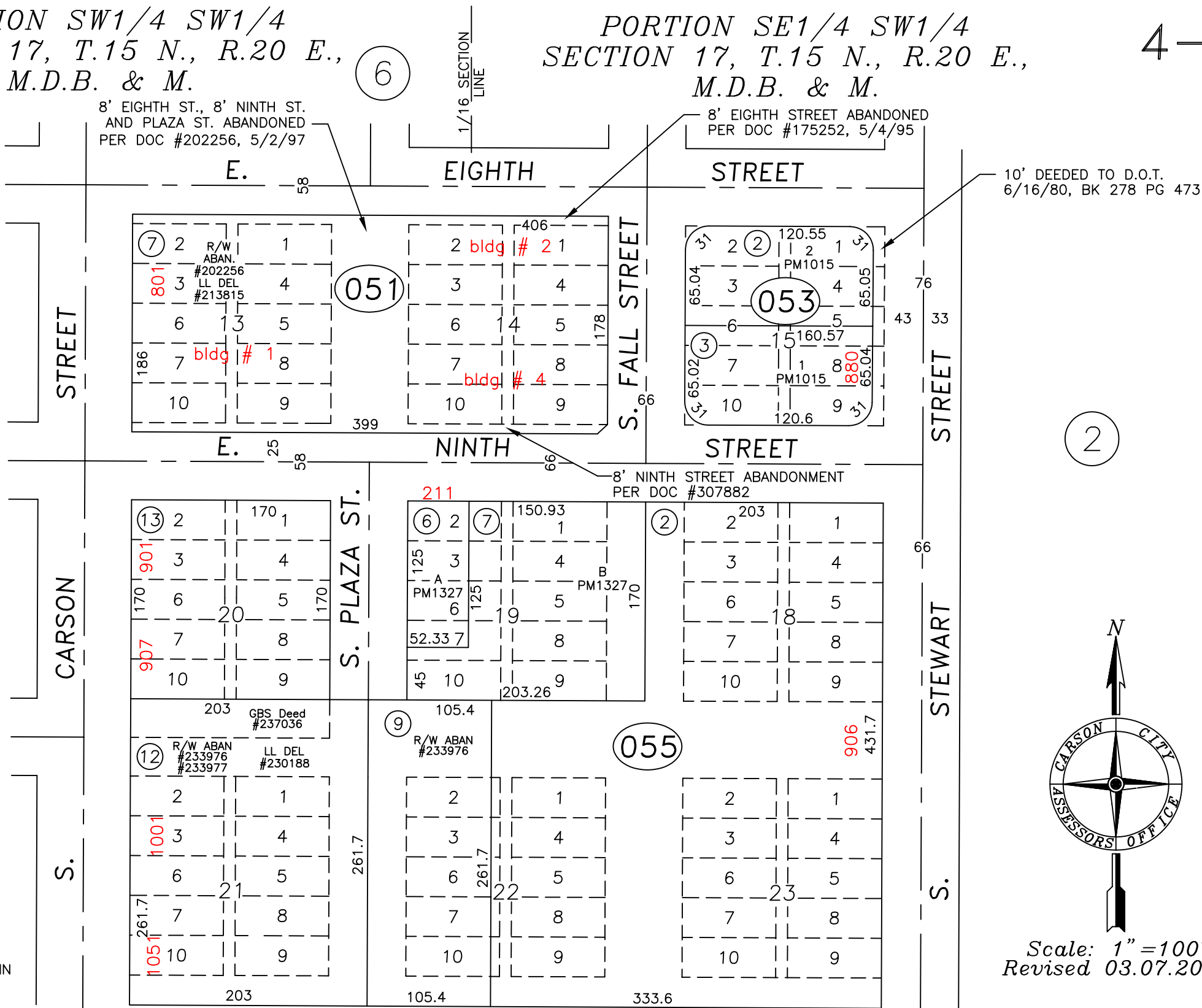


PORTION SW1/4 SW1/4
SECTION 17, T.15 N., R.20 E.,
M.D.B. & M.

PORTION SE1/4 SW1/4
SECTION 17, T.15 N., R.20 E.,
M.D.B. & M.

4-05

ALLEY ABANDONMENTS		
BLOCK	DOCUMENT	DATE
13	BK 54 PG 156	9/6/51
19	BK 9 PG 143	
21	BK 7 PG 249	7/11/40



4-051-06 is 4-051-07, 8' ninth st Aban # 307882

NOTE
SOME PARCELS DELINEATED HEREON MAY NOT
BE PRESENTED IN TRUE SIZE, SHAPE, OR LOCATION
DUE TO DISCREPANCIES BETWEEN LOT LINES.

CARSON CITY, NEVADA
THIS MAP IS PREPARED FOR THE USE OF THE CARSON CITY
ASSESSOR FOR ASSESSMENT AND ILLUSTRATIVE PURPOSES
ONLY, IT DOES NOT REPRESENT A SURVEY. NO LIABILITY
IS ASSUMED AS TO THE SUFFICIENCY OR ACCURACY OF
THE DATA DELINEATED HEREON.

Scale: 1" = 100'
Revised 03.07.2004

PIERSON & GOODRIDGE
ADDITION