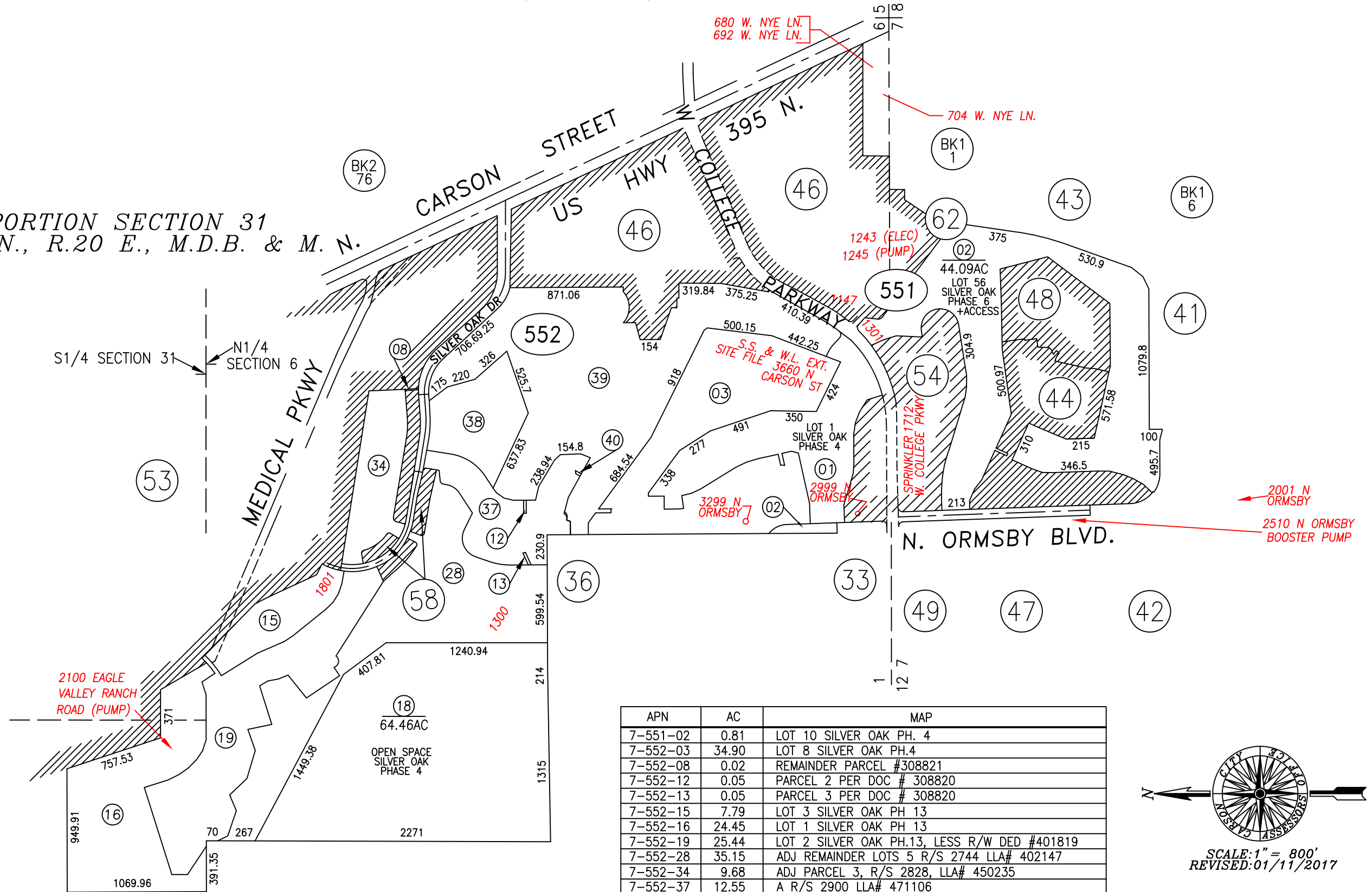


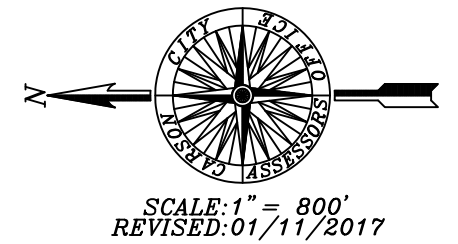
PORTION SECTIONS 6 & 7,  
T.15 N., R.20 E., M.D.B. & M.

PORTION SECTION 31  
T.16 N., R.20 E., M.D.B. & M. N.

PORTION SECTION 36  
T.16 N., R.19 E., M.D.B. & M.



APN	AC	MAP
7-551-02	0.81	LOT 10 SILVER OAK PH. 4
7-552-03	34.90	LOT 8 SILVER OAK PH.4
7-552-08	0.02	REMAINDER PARCEL #308821
7-552-12	0.05	PARCEL 2 PER DOC # 308820
7-552-13	0.05	PARCEL 3 PER DOC # 308820
7-552-15	7.79	LOT 3 SILVER OAK PH 13
7-552-16	24.45	LOT 1 SILVER OAK PH 13
7-552-19	25.44	LOT 2 SILVER OAK PH.13, LESS R/W DED #401819
7-552-28	35.15	ADJ REMAINDER LOTS 5 R/S 2744 LLA# 402147
7-552-34	9.68	ADJ PARCEL 3, R/S 2828, LLA# 450235
7-552-37	12.55	A R/S 2900 LLA# 471106
7-552-38	10.38	B R/S 2900 LLA# 471106
7-552-39	53.97	C R/S 2900 LLA# 471106
7-552-40	0.02	D R/S 2900 LLA# 471106



PARCELS 007-552-05 IS NOW 007-552-40 AND 007-552-11 & 23 IS NOW 007-552-37 & 38 AND 007-552-24 IS NOW 007-552-39

CARSON CITY, NEVADA  
THIS MAP IS PREPARED FOR THE USE OF THE CARSON CITY ASSESSOR FOR ASSESSMENT AND ILLUSTRATIVE PURPOSES ONLY, IT DOES NOT REPRESENT A SURVEY. NO LIABILITY IS ASSUMED AS TO THE SUFFICIENCY OR ACCURACY OF THE DATA DELINEATED HEREON. YOU CAN VIEW AND PRINT OUR MAPS AT NO CHARGE FROM OUR WEBSITE AT: <http://ccapps.org/publicgis/>