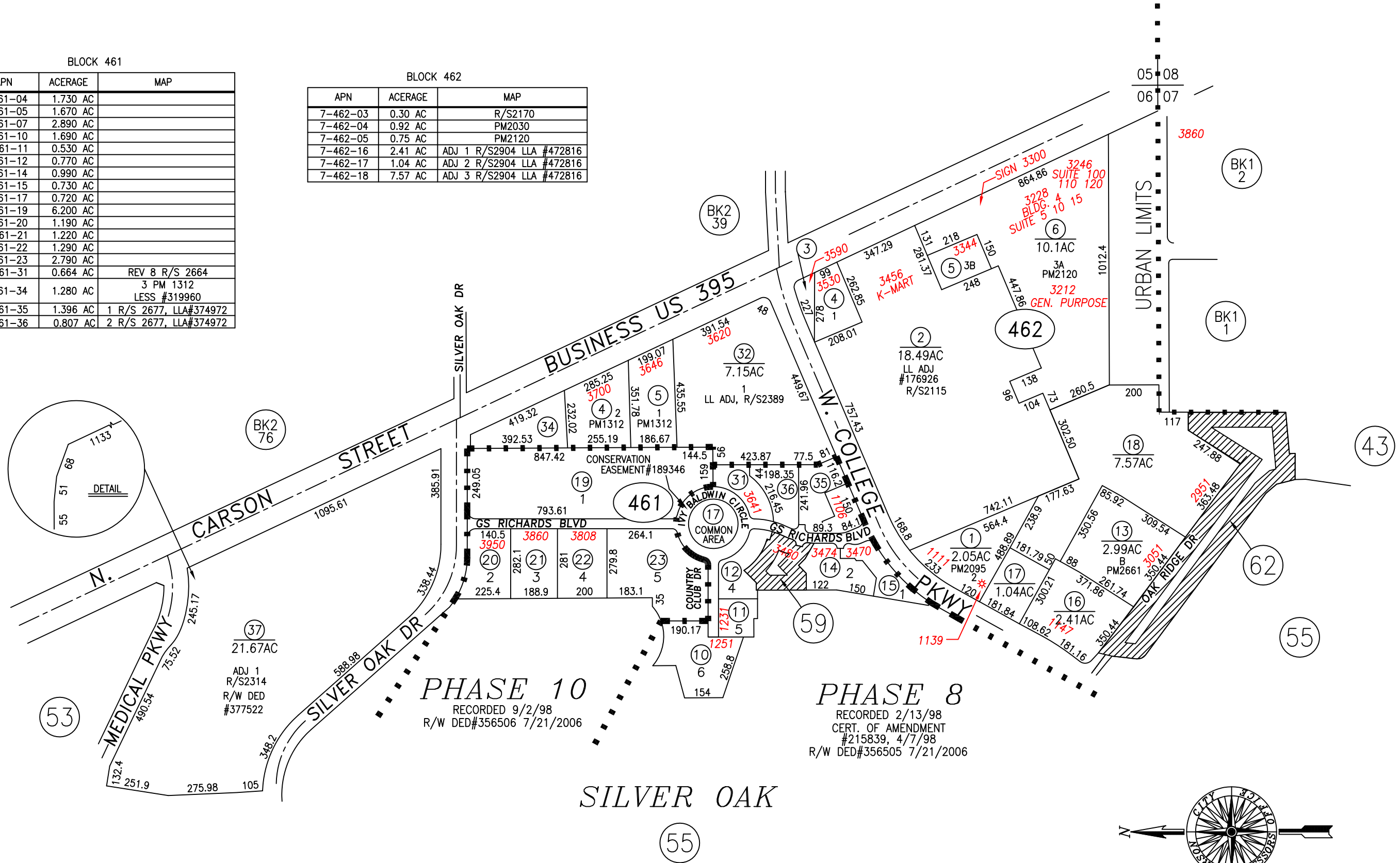


BLOCK 461

APN	ACERAGE	MAP
7-461-04	1.730 AC	
7-461-05	1.670 AC	
7-461-07	2.890 AC	
7-461-10	1.690 AC	
7-461-11	0.530 AC	
7-461-12	0.770 AC	
7-461-14	0.990 AC	
7-461-15	0.730 AC	
7-461-17	0.720 AC	
7-461-19	6.200 AC	
7-461-20	1.190 AC	
7-461-21	1.220 AC	
7-461-22	1.290 AC	
7-461-23	2.790 AC	
7-461-31	0.664 AC	REV 8 R/S 2664
7-461-34	1.280 AC	3 PM 1312 LESS #319960
7-461-35	1.396 AC	1 R/S 2677, LLA#374972
7-461-36	0.807 AC	2 R/S 2677, LLA#374972

BLOCK 462

APN	ACERAGE	MAP
7-462-03	0.30 AC	R/S2170
7-462-04	0.92 AC	PM2030
7-462-05	0.75 AC	PM2120
7-462-16	2.41 AC	ADJ 1 R/S2904 LLA #472816
7-462-17	1.04 AC	ADJ 2 R/S2904 LLA #472816
7-462-18	7.57 AC	ADJ 3 R/S2904 LLA #472816



PARCEL 007-462-10 & 11 IS A NEW PAGE 7-62

CARSON CITY, NEVADA  
THIS MAP IS PREPARED FOR THE USE OF THE CARSON CITY ASSESSOR FOR ASSESSMENT AND ILLUSTRATIVE PURPOSES ONLY, IT DOES NOT REPRESENT A SURVEY. NO LIABILITY IS ASSUMED AS TO THE SUFFICIENCY OR ACCURACY OF THE DATA DELINEATED HEREON. YOU CAN VIEW AND PRINT OUR MAPS AT NO CHARGE FROM OUR WEBSITE AT: <http://ccapps.org/publicgis/>