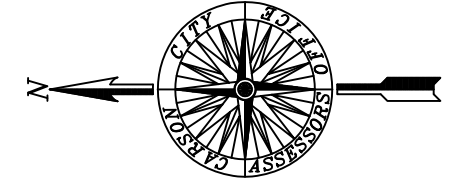


LONG RANCH ESTATES
PHASE 5
A PLANNED UNIT DEVELOPMENT

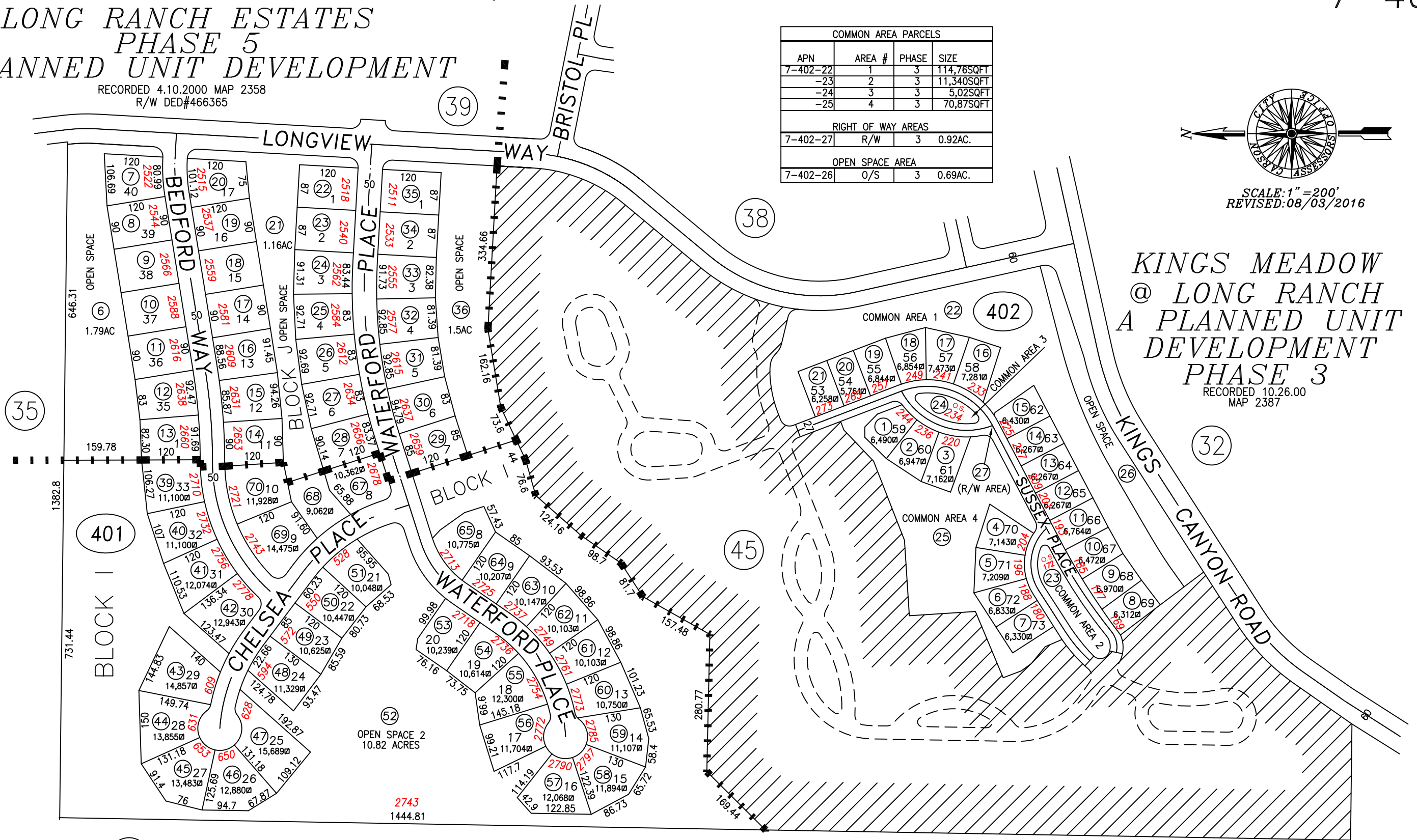
RECORDED 4.10.2000 MAP 2358
R/W DED#466365

COMMON AREA PARCELS			
APN	AREA #	PHASE	SIZE
7-402-22	1	3	114,76SQFT
-23	2	3	11,340SQFT
-24	3	3	5,02SQFT
-25	4	3	70,87SQFT
RIGHT OF WAY AREAS			
7-402-27	R/W	3	0.92AC.
OPEN SPACE AREA			
7-402-26	O/S	3	0.69AC.



SCALE: 1" = 200'
REVISED: 08/03/2016

KINGS MEADOW
@ LONG RANCH
A PLANNED UNIT
DEVELOPMENT
PHASE 3
RECORDED 10.26.00
MAP 2387



6

LONG RANCH ESTATES
PHASE 6
A PLANNED UNIT DEVELOPMENT

RECORDED 08.14.2001 MAP 2420
R/W DED#466365

REMOVED PARCELS 007-401-37, 38 & 66 R/W DED#466365

CARSON CITY, NEVADA
THIS MAP IS PREPARED FOR THE USE OF THE CARSON CITY
ASSESSOR FOR ASSESSMENT AND ILLUSTRATIVE PURPOSES
ONLY, IT DOES NOT REPRESENT A SURVEY. NO LIABILITY
IS ASSUMED AS TO THE SUFFICIENCY OR ACCURACY OF THE
DATA DELINEATED HEREON. YOU CAN VIEW AND PRINT OUR
MAPS AT NO CHARGE FROM OUR WEBSITE AT
WWW.CARSON-CITY.NV.US