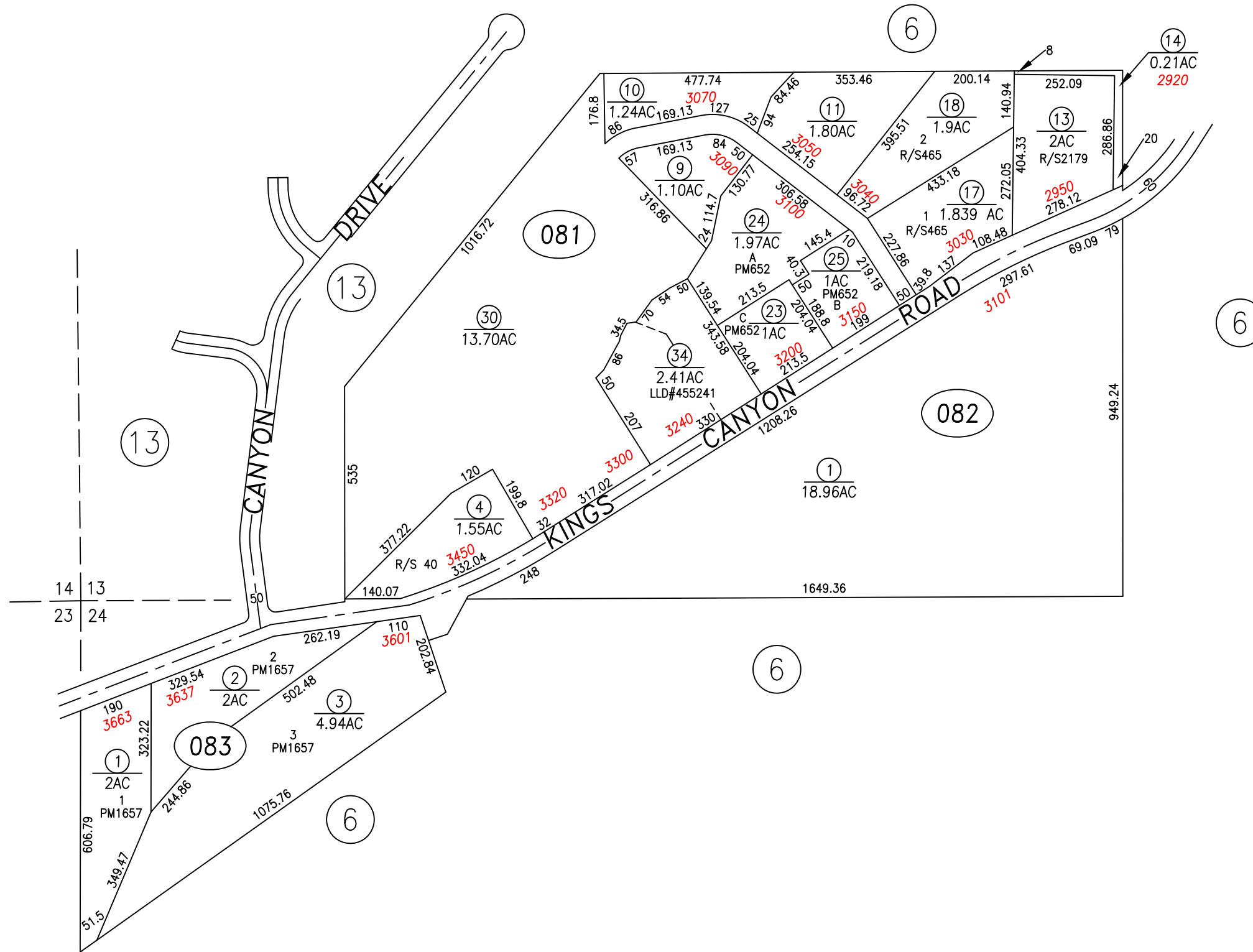


PORTION S1/2 SW1/4 SECTION 13, T.15 N., R.19 E., M.D.B. & M.
 AND
 PORTION NW1/4 NW1/4 SECTION 24, T.15 N., R.19 E., M.D.B. & M.



PARCELS 007-081-32 & 33 ARE NOW 007-081-34 LLD#455241

NOTE
 SOME PARCELS DELINEATED HEREON MAY NOT
 BE PRESENTED IN TRUE SIZE, SHAPE, OR LOCATION
 DUE TO DISCREPANCIES BETWEEN LOT LINES.

CARSON CITY, NEVADA
 THIS MAP IS PREPARED FOR THE USE OF THE CARSON CITY
 ASSESSOR FOR ASSESSMENT AND ILLUSTRATIVE PURPOSES
 ONLY, IT DOES NOT REPRESENT A SURVEY. NO LIABILITY
 IS ASSUMED AS TO THE SUFFICIENCY OR ACCURACY OF THE
 DATA DELINEATED HEREON. YOU CAN VIEW AND PRINT OUR
 MAPS AT NO CHARGE FROM OUR WEBSITE AT: <http://ccapps.org/publicgis/>

