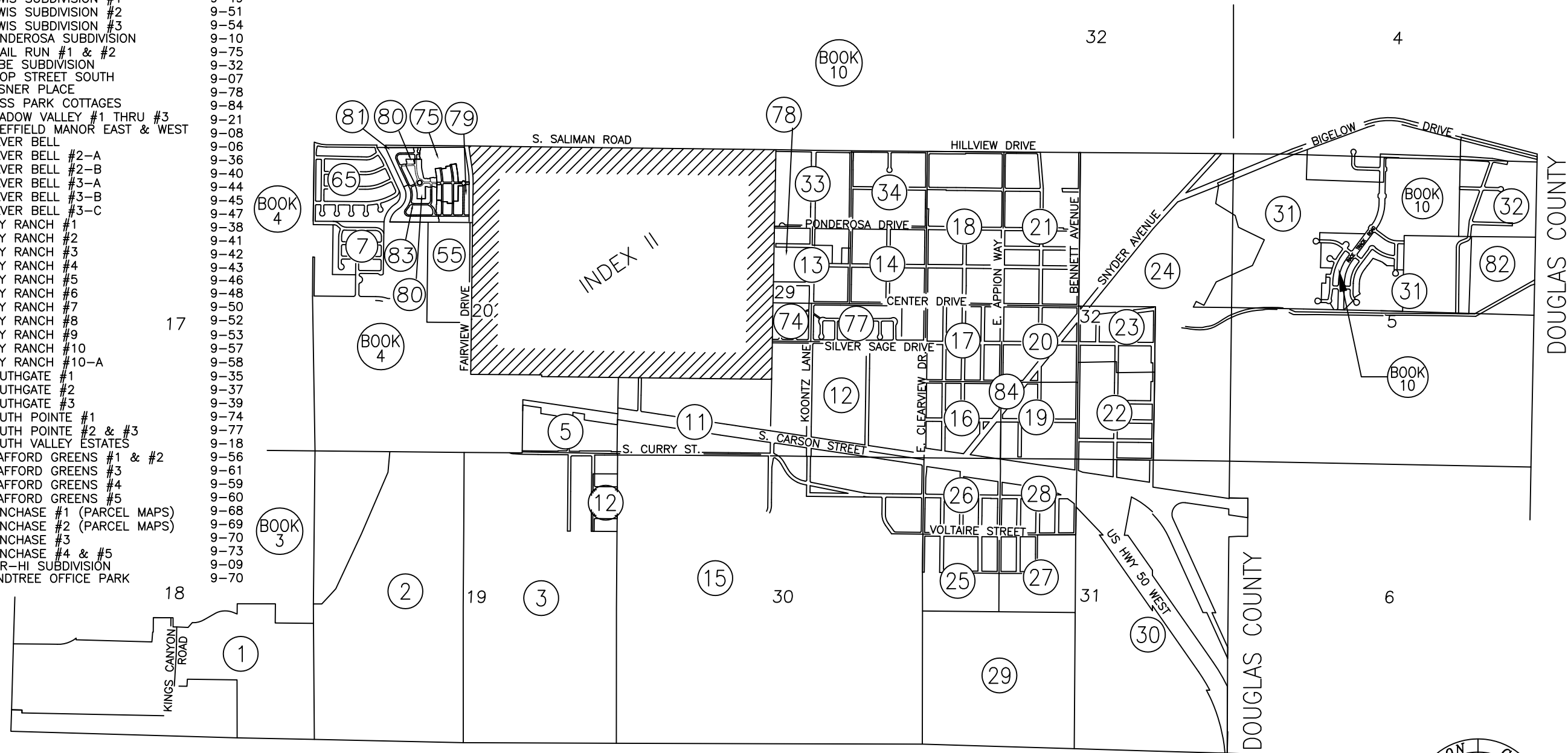


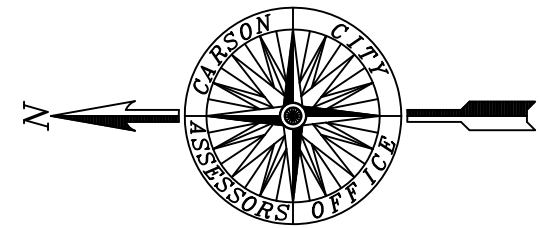
BOOK 9 INDEX I

SUBDIVISION	BOOK - PAGE
COUNTRY CLUB ESTATES	9-65
DOUBLETREE #1 THRU #3	9-60
HALVERSON SUBDIVISION	9-04
HERITAGE PARK #2	9-79
HERITAGE PARK #3	9-80, 9-81
HERITAGE PARK #4	9-75
HERITAGE PARK #5	9-80
HERITAGE PARK #6	9-81, 9-83
KERINNE COURT	9-78
LEWIS SUBDIVISION #1	9-49
LEWIS SUBDIVISION #2	9-51
LEWIS SUBDIVISION #3	9-54
PONDEROSA SUBDIVISION	9-10
QUAIL RUN #1 & #2	9-75
RABE SUBDIVISION	9-32
ROOP STREET SOUTH	9-07
RASNER PLACE	9-78
ROSS PARK COTTAGES	9-84
SHADOW VALLEY #1 THRU #3	9-21
SHEFFIELD MANOR EAST & WEST	9-08
SILVER BELL	9-06
SILVER BELL #2-A	9-36
SILVER BELL #2-B	9-40
SILVER BELL #3-A	9-44
SILVER BELL #3-B	9-45
SILVER BELL #3-C	9-47
SKY RANCH #1	9-38
SKY RANCH #2	9-41
SKY RANCH #3	9-42
SKY RANCH #4	9-43
SKY RANCH #5	9-46
SKY RANCH #6	9-48
SKY RANCH #7	9-50
SKY RANCH #8	9-52
SKY RANCH #9	9-53
SKY RANCH #10	9-57
SKY RANCH #10-A	9-58
SOUTHGATE #1	9-35
SOUTHGATE #2	9-37
SOUTHGATE #3	9-39
SOUTH POINTE #1	9-74
SOUTH POINTE #2 & #3	9-77
SOUTH VALLEY ESTATES	9-18
STAFFORD GREENS #1 & #2	9-56
STAFFORD GREENS #3	9-61
STAFFORD GREENS #4	9-59
STAFFORD GREENS #5	9-60
SUNCHASE #1 (PARCEL MAPS)	9-68
SUNCHASE #2 (PARCEL MAPS)	9-69
SUNCHASE #3	9-70
SUNCHASE #4 & #5	9-73
WAR-HI SUBDIVISION	9-09
WINDTREE OFFICE PARK	9-70



ADDED PAGE 84 FOR ROSS PARK COTTAGES #2906 DOC# 473160

CARSON CITY, NEVADA
 THIS MAP IS PREPARED FOR THE USE OF THE CARSON CITY
 ASSESSOR FOR ASSESSMENT AND ILLUSTRATIVE PURPOSES
 ONLY, IT DOES NOT REPRESENT A SURVEY. NO LIABILITY
 IS ASSUMED AS TO THE SUFFICIENCY OR ACCURACY OF THE
 DATA DELINEATED HEREON. YOU CAN VIEW AND PRINT OUR
 MAPS AT NO CHARGE FROM OUR WEBSITE AT: <http://ccapps.org/publicgis/>



SCALE: 1" = 2000'
 REVISED 03/22/2017