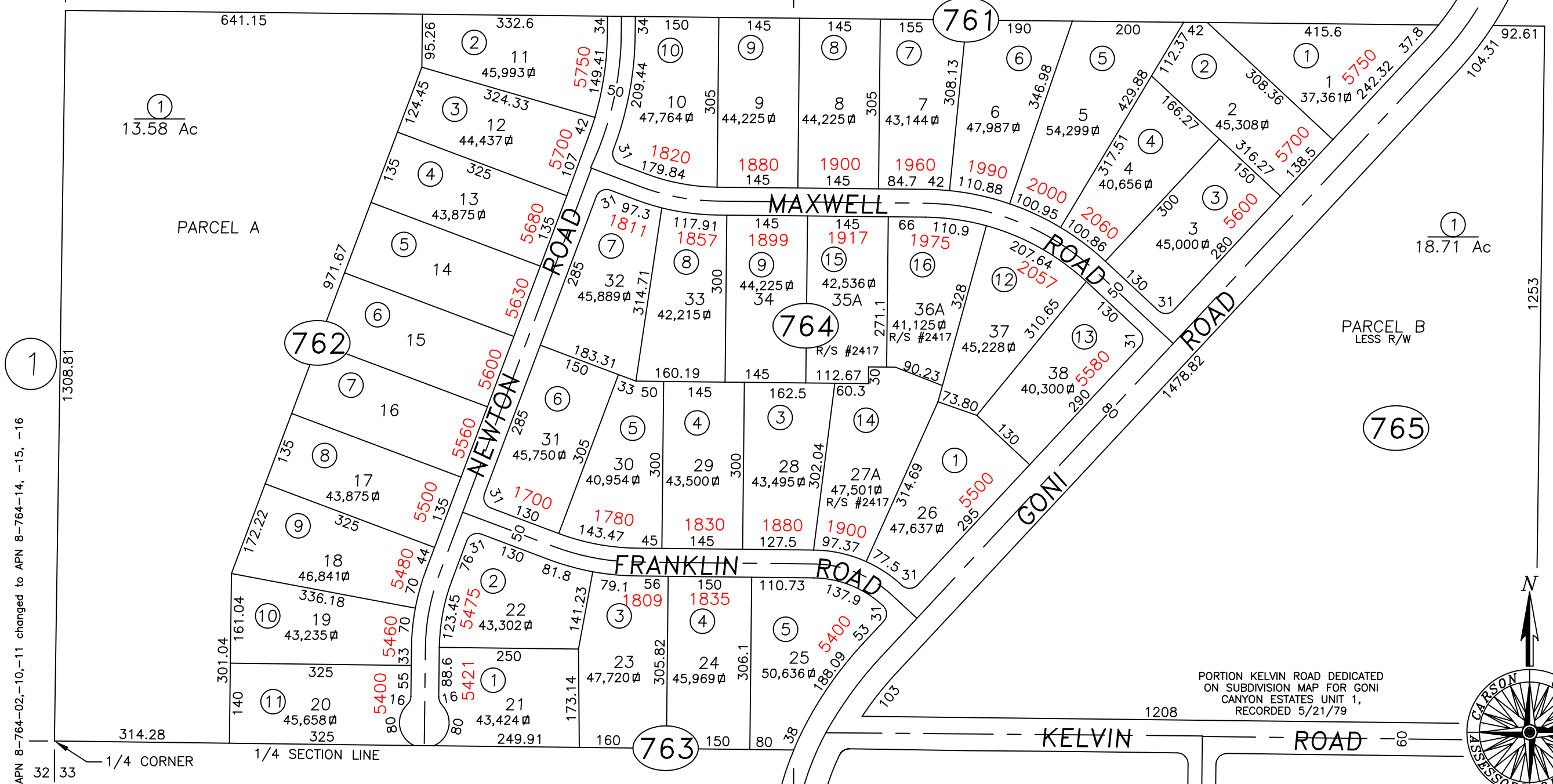


SECTION LINE 32 33

SW1/4 NW1/4 SECTION 33
T.16 N., R.20 E., M.D.B. & M.

SE1/4 NW1/4 SECTION 33
T.16 N., R.20 E., M.D.B. & M.

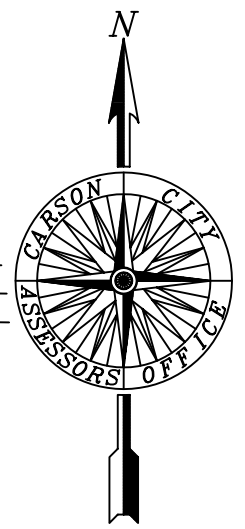
8-76
FERMI ROAD



R/S MAP# 2417, APN 8-764-02,-10,-11 changed to APN 8-764-14, -15, -16

CARSON CITY, NEVADA
THIS MAP IS PREPARED FOR THE USE OF THE CARSON CITY
ASSESSOR FOR ASSESSMENT AND ILLUSTRATIVE PURPOSES
ONLY, IT DOES NOT REPRESENT A SURVEY. NO LIABILITY
IS ASSUMED AS TO THE SUFFICIENCY OR ACCURACY OF
THE DATA DELINEATED HEREON.

PORTION KELVIN ROAD DEDICATED
ON SUBDIVISION MAP FOR GONI
CANYON ESTATES UNIT 1,
RECORDED 5/21/79



INDIAN MOUNTAIN
ESTATES
RECORDED 2/27/78

Scale: 1" = 200'
Revised 7.05.2001