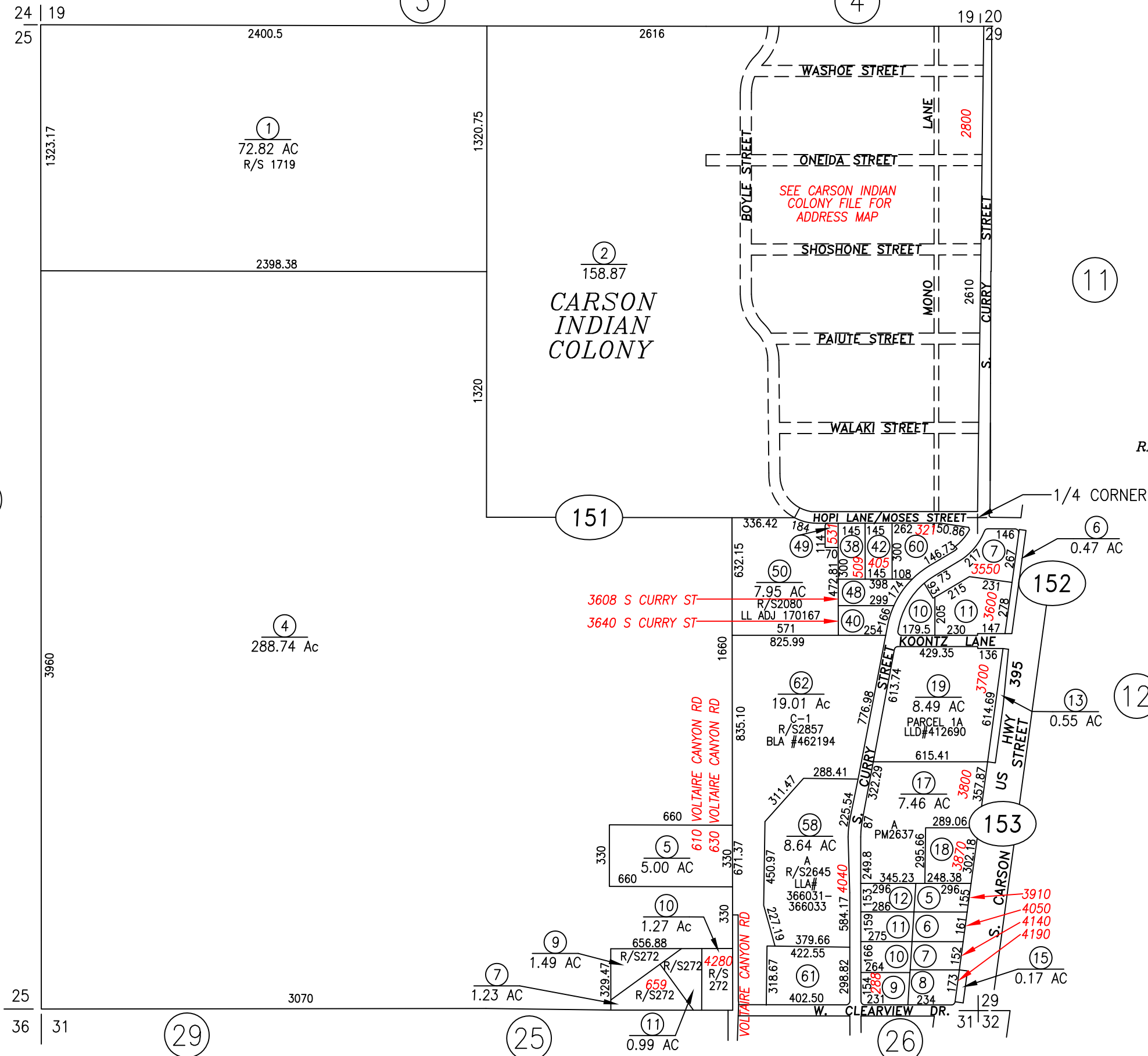


APN	DESCRIPTION	ACREAGE	NOTES
BLOCK 151			
9-151-38	A PM1662	1.00 AC	
9-151-40	C PM1662	1.00 AC	
9-151-42	1 PM1744	1.00 AC	
9-151-48	D-1 PM2072	1.11 AC	
9-151-49	R/S2080 LL ADJ	0.21 AC	
9-151-60	2 PM1744 LESS # 388794	2.01 AC	
9-151-61	B1 R/S2857 BLA #462193	3.09 AC	
BLOCK 152			
9-152-06	LEASE #428911	0.47 AC	
9-152-07	R/S2264 LL ADJ	2.00 AC	
9-152-10	R/S2433 LL ADJ	0.92 AC	1-B-2
9-152-11	R/S2243 LL ADJ	2.54 AC	
BLOCK 153			
9-153-05	1-D PM1475	1.02 AC	
9-153-06	2 PM1341	1.02 AC	
9-153-07	3 PM1341	0.93 AC	
9-153-08	4 PM1341	1.11 AC	
9-153-09	1-A PM1475	1.02 AC	
9-153-10	1-B PM1475	1.02 AC	
9-153-11	1-C1 PM1532	1.02 AC	
9-153-12	1-C2 PM1532	1.02 AC	
9-153-18	B PM2637	1.84 AC	



BK7
5

PARCELS 009-151-57 IS NOW 009-151-62 & 009-151-59 IS NOW 009-151-61

NOTE
SOME PARCELS DELINEATED HEREON MAY NOT BE PRESENTED IN TRUE SIZE, SHAPE, OR LOCATION DUE TO DISCREPANCIES BETWEEN LOT LINES.

CARSON CITY, NEVADA
THIS MAP IS PREPARED FOR THE USE OF THE CARSON CITY ASSESSOR FOR ASSESSMENT AND ILLUSTRATIVE PURPOSES ONLY. IT DOES NOT REPRESENT A SURVEY. NO LIABILITY IS ASSUMED AS TO THE SUFFICIENCY OR ACCURACY OF THE DATA DELINEATED HEREON. YOU CAN VIEW AND PRINT OUR MAPS AT NO CHARGE FROM OUR WEBSITE AT: <http://ccapps.org/publicgis/>