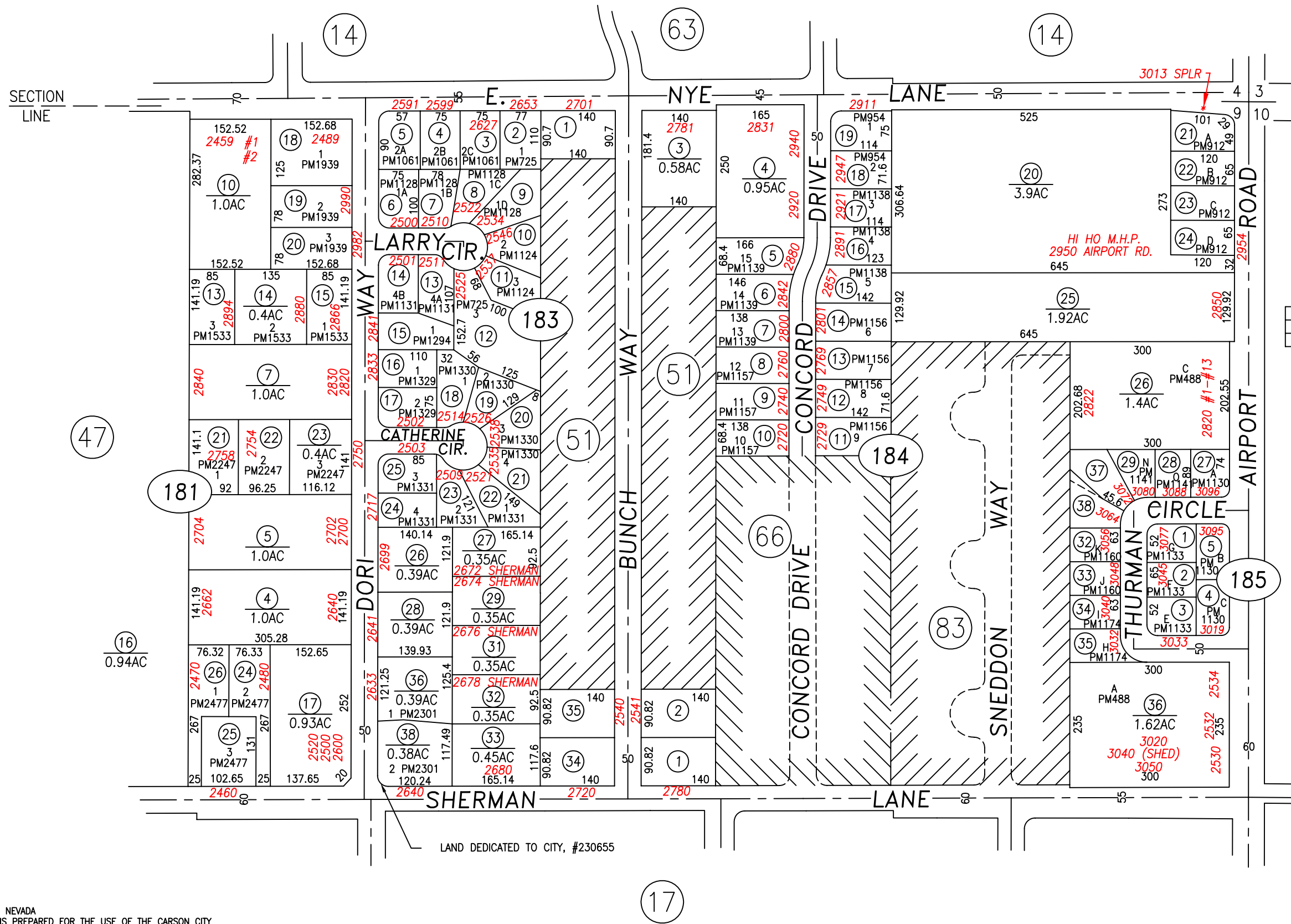
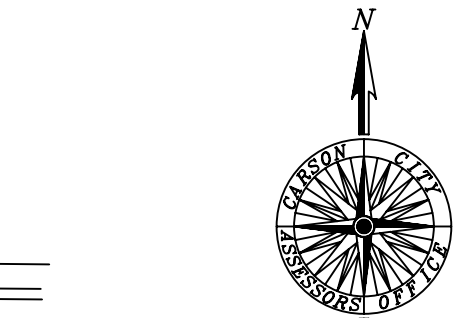


PORTION N1/2 NE1/4 SECTION 9, T.15 N., R.20 E., M.D.B. & M.



APN	MAP INFO
008-184-37	LLA #419083, R/S 2773
008-184-38	LLA #419083, R/S 2773



SCALE: 1" = 200'
REVISED: 2/15/2011

PARCEL 008-184-30 AND 31 ARE NOW 37 AND 38 LLA #419083 R/S 2773

CARSON CITY, NEVADA
THIS MAP IS PREPARED FOR THE USE OF THE CARSON CITY ASSESSOR FOR ASSESSMENT AND ILLUSTRATIVE PURPOSES ONLY. IT DOES NOT REPRESENT A SURVEY. NO LIABILITY IS ASSUMED AS TO THE SUFFICIENCY OR ACCURACY OF THE DATA DELINEATED HEREON. YOU CAN VIEW AND PRINT OUR MAPS AT NO CHARGE FROM OUR WEBSITE AT WWW.CARSON-CITY.NV.US