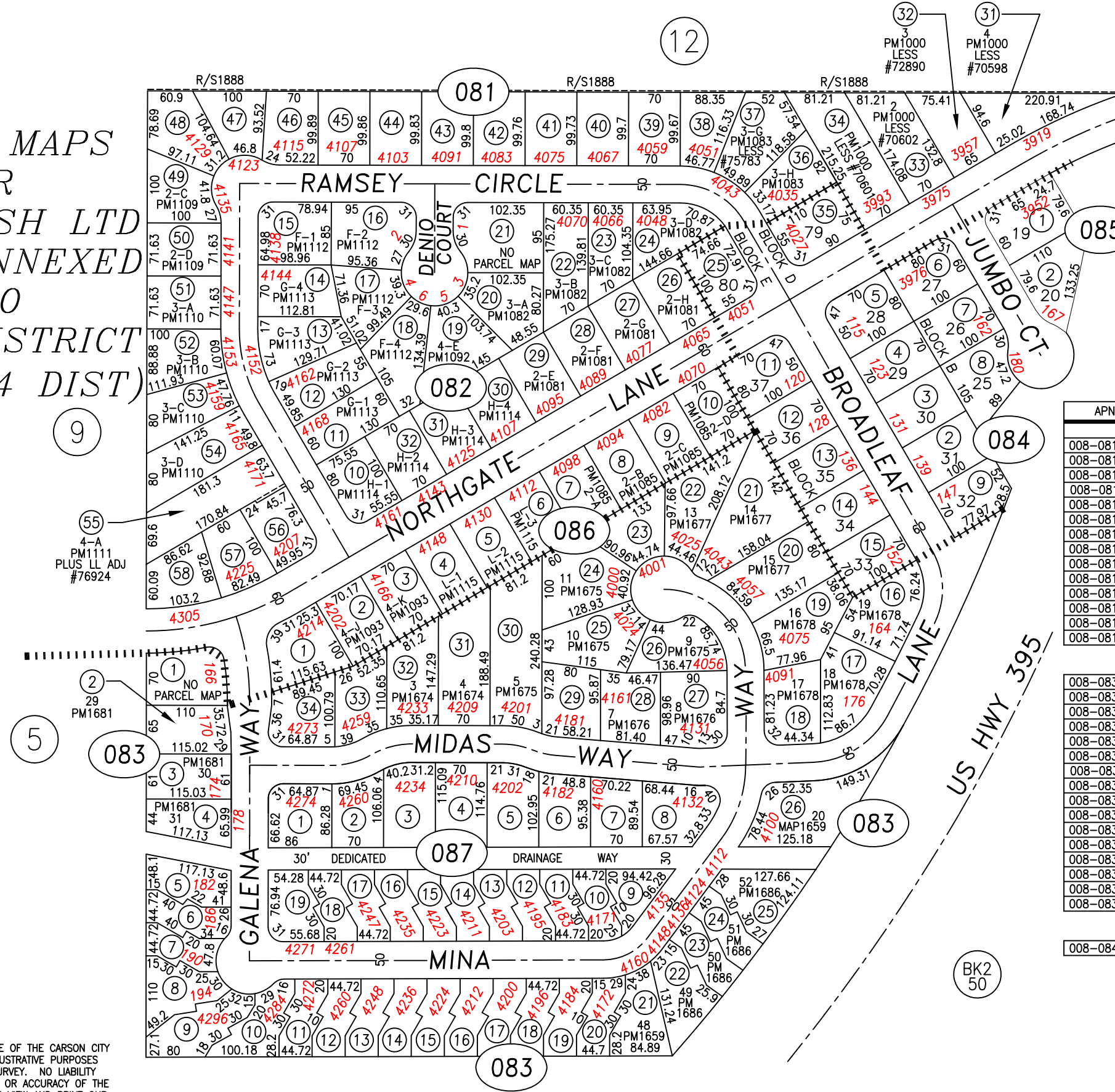


PARCEL MAPS
FOR
SAGEBRUSH LTD
NEVER ANNEXED
INTO
URBAN DISTRICT
(STILL 2.4 DIST)

UNIT NO 1
LAHONTAN
SUBDIVISION
RECORDED 9/24/79



APN	LOT & RECORD
BLOCK 081	
008-081-38	3-F PM1083 LESS #72889
008-081-39	3-E PM1083 LESS #87258
008-081-40	4-A PM1084 LESS #70597
008-081-41	4-B PM1084 LESS #70519
008-081-42	4-C PM1084 LESS #70596
008-081-43	1-A PM1108 LESS #76989
008-081-44	1-B PM1108 LESS #70600
008-081-45	1-C PM1108 LESS #70599
008-081-46	1-D PM1108 LESS #77747
008-081-47	2-A PM1109 LESS #79811
008-081-48	2-B PM1109 LESS #70595
008-081-56	4-B PM1111 LESS #76924
008-081-57	4-C PM1111
008-081-58	4-D PM1111
BLOCK 083	
008-083-05	32 LL ADJ #121459
008-083-06	33 LL ADJ #121459
008-083-07	34 LL ADJ #121459
008-083-08	35 LL ADJ #121459
008-083-09	36 LL ADJ #121459
008-083-10	37 LL ADJ #121459
008-083-11	38 PM1683
008-083-12	39 PM1683
008-083-13	40 PM1684
008-083-14	41 PM1684
008-083-15	42 PM1684
008-083-16	43 PM1684
008-083-17	44 PM1685
008-083-18	45 PM1685
008-083-19	46 PM1685
008-083-20	47 PM1685
BLOCK 084	
008-084-09	LESS #431815

APN	LOT & RECORD
BLOCK 085	
008-085-01	19
008-085-02	20
BLOCK 086	
008-086-01	4-1 PM1093
008-086-23	12 PM1677
008-086-29	6 PM1676
008-086-33	2 PM1674
008-086-34	1 PM1674
BLOCK 087	
008-087-01	28 PM1680
008-087-02	27 PM1680
008-087-03	26 PM1680
008-087-04	25 PM1680
008-087-05	24 PM1679
008-087-06	23 PM1679
008-087-07	22 PM1679
008-087-08	21 PM1659
008-087-09	53 PM1687
008-087-10	54 PM1687
008-087-11	55 PM1687
008-087-12	56 PM1688
008-087-13	57 PM1688
008-087-14	58 PM1688
008-087-15	59 PM1688
008-087-16	60 PM1689
008-087-17	61 PM1689
008-087-18	62 PM1689
008-087-19	63 PM1689

REACTIVATED PARCEL 002-471-21 & CHANGED TO 008-085-02 PER NDOT DOC SUR12-15

CARSON CITY, NEVADA
THIS MAP IS PREPARED FOR THE USE OF THE CARSON CITY ASSESSOR FOR ASSESSMENT AND ILLUSTRATIVE PURPOSES ONLY. IT DOES NOT REPRESENT A SURVEY. NO LIABILITY IS ASSUMED AS TO THE SUFFICIENCY OR ACCURACY OF THE DATA DELINEATED HEREON. YOU CAN VIEW AND PRINT OUR MAPS AT NO CHARGE FROM OUR WEBSITE AT: <http://ccapps.org/publicgis/>

