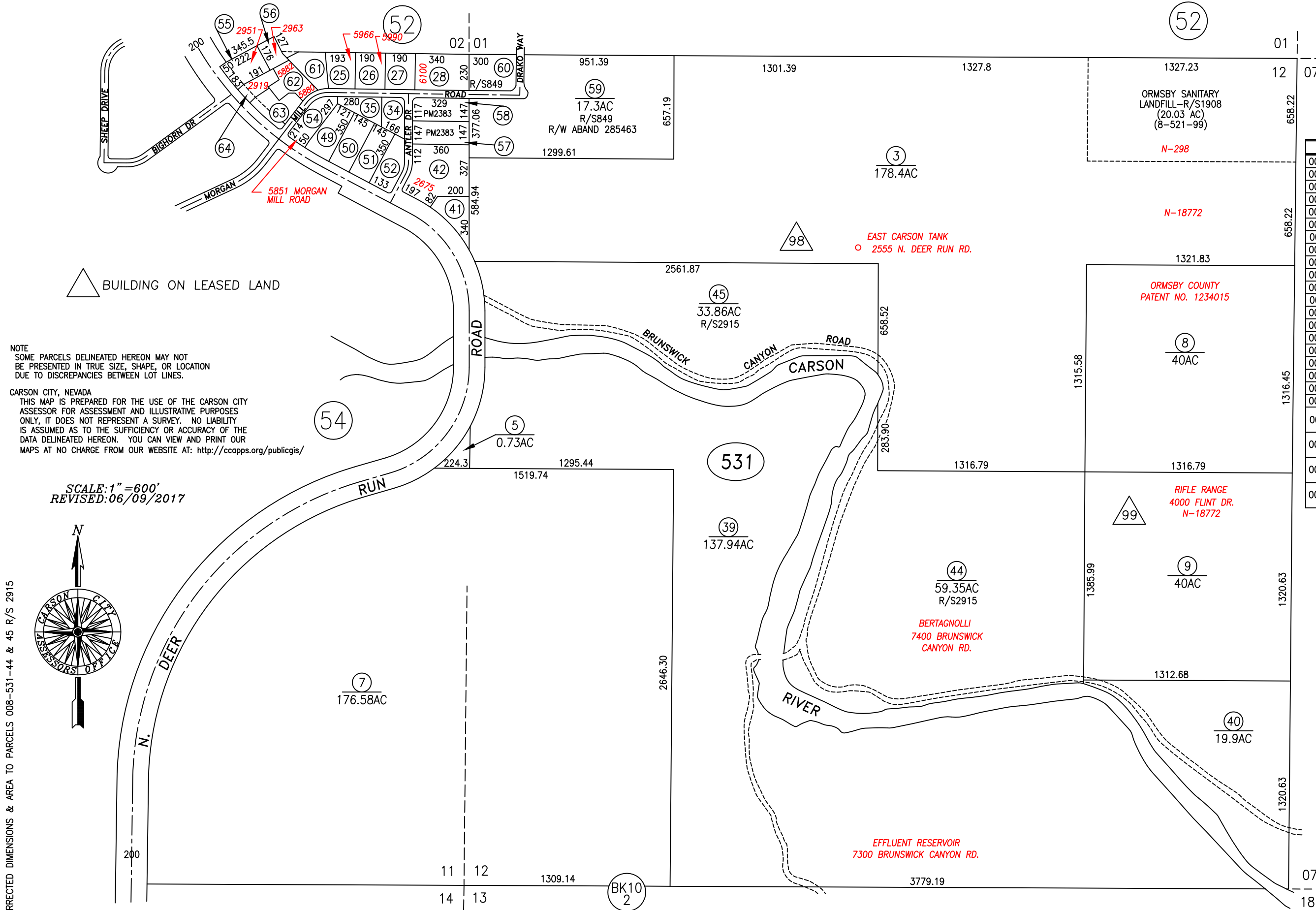


CORRECTED DIMENSIONS & AREA TO PARCELS 008-531-44 & 45 R/S 2915



NOTE
SOME PARCELS DELINEATED HEREON MAY NOT BE PRESENTED IN TRUE SIZE, SHAPE, OR LOCATION DUE TO DISCREPANCIES BETWEEN LOT LINES.

CARSON CITY, NEVADA
THIS MAP IS PREPARED FOR THE USE OF THE CARSON CITY ASSESSOR FOR ASSESSMENT AND ILLUSTRATIVE PURPOSES ONLY, IT DOES NOT REPRESENT A SURVEY. NO LIABILITY IS ASSUMED AS TO THE SUFFICIENCY OR ACCURACY OF THE DATA DELINEATED HEREON. YOU CAN VIEW AND PRINT OUR MAPS AT NO CHARGE FROM OUR WEBSITE AT: <http://ccapps.org/publicgis/>

SCALE: 1" = 600'
REVISED: 06/09/2017



APN	RECORD
008-531-25	C2 869
008-531-26	A 870
008-531-27	B 870
008-531-28	C 870
008-531-34	C4 869
008-531-35	C3 869
008-531-41	C 2031
008-531-42	B 2031
008-531-43	A 2031
008-531-49	B1 868
008-531-50	B2 868
008-531-51	B3 868
008-531-52	B4 868
008-531-54	A4 867 + R/W
008-531-55	A 2351
008-531-56	B 2351
008-531-57	A2 2383
008-531-58	A1 2383
008-531-59	R/W DEED 286658
008-531-60	R/W DEED 286661
008-531-61	C1 869, R/S2705, & LLA#385243
008-531-62	ADJ A3A R/S2897
008-531-63	ADJ A2A R/S2897
008-531-64	ADJ A1A R/S2897

BK10
2

BK10
1