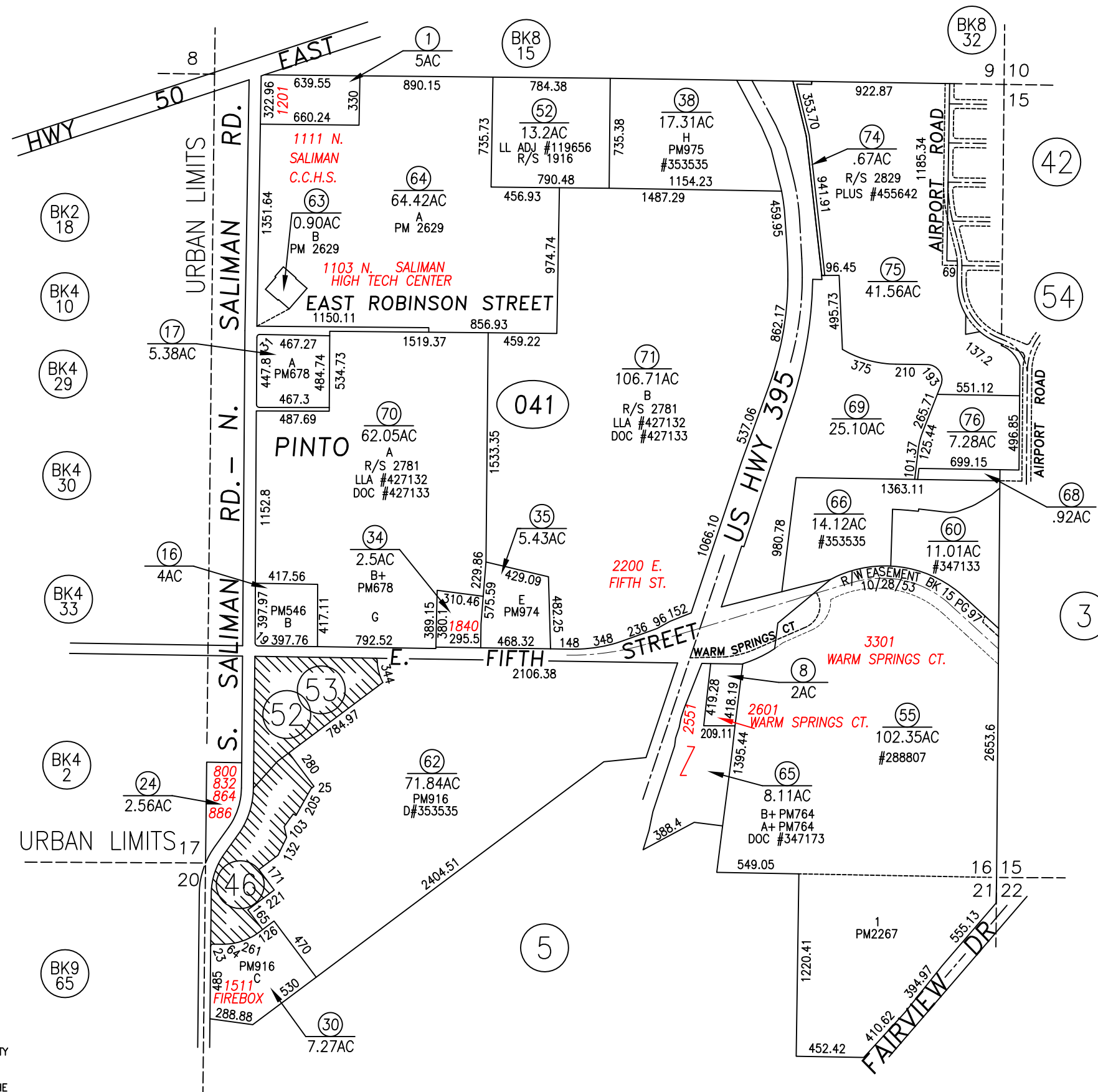
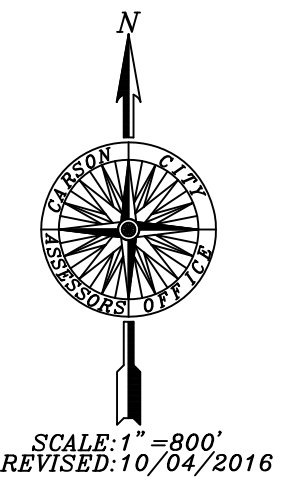


SECTION 16 AND
 PORTION NW 1/4 SECTION 21, T.15 N., R.20 E., M.D.B. & M.



APN	MAP INFO
010-041-67 010-041-68	LESS LL ADJ #110824 PM 975
	LESS LL ADJ #119656 R/S 1916
	LESS LL ADJ #135591 R/S 1960
010-041-69	LESS #415802
010-041-74	LESS DEEDS, #191690 #191691, #191692
	2 R/S 2828 DOC #450239 SUPPORTING A PARCEL MAP WAIVER PLUS #455642
010-041-75	ADJ 1 R/S2890 LLA #468334
010-041-76	ADJ 2 R/S2890 LLA #468334



010-041-73 IS NOW 010-041-75 & 010-036-04 IS NOW 010-041-76
 CORRECTED PARCELS

NOTE
 SOME PARCELS DELINEATED HEREON MAY NOT
 BE PRESENTED IN TRUE SIZE, SHAPE, OR LOCATION
 DUE TO DISCREPANCIES BETWEEN LOT LINES.

CARSON CITY, NEVADA
 THIS MAP IS PREPARED FOR THE USE OF THE CARSON CITY
 ASSESSOR FOR ASSESSMENT AND ILLUSTRATIVE PURPOSES
 ONLY, IT DOES NOT REPRESENT A SURVEY. NO LIABILITY
 IS ASSUMED AS TO THE SUFFICIENCY OR ACCURACY OF THE
 DATA DELINEATED HEREON. YOU CAN VIEW AND PRINT OUR
 MAPS AT NO CHARGE FROM OUR WEBSITE AT: <http://ccapps.org/publicgis/>