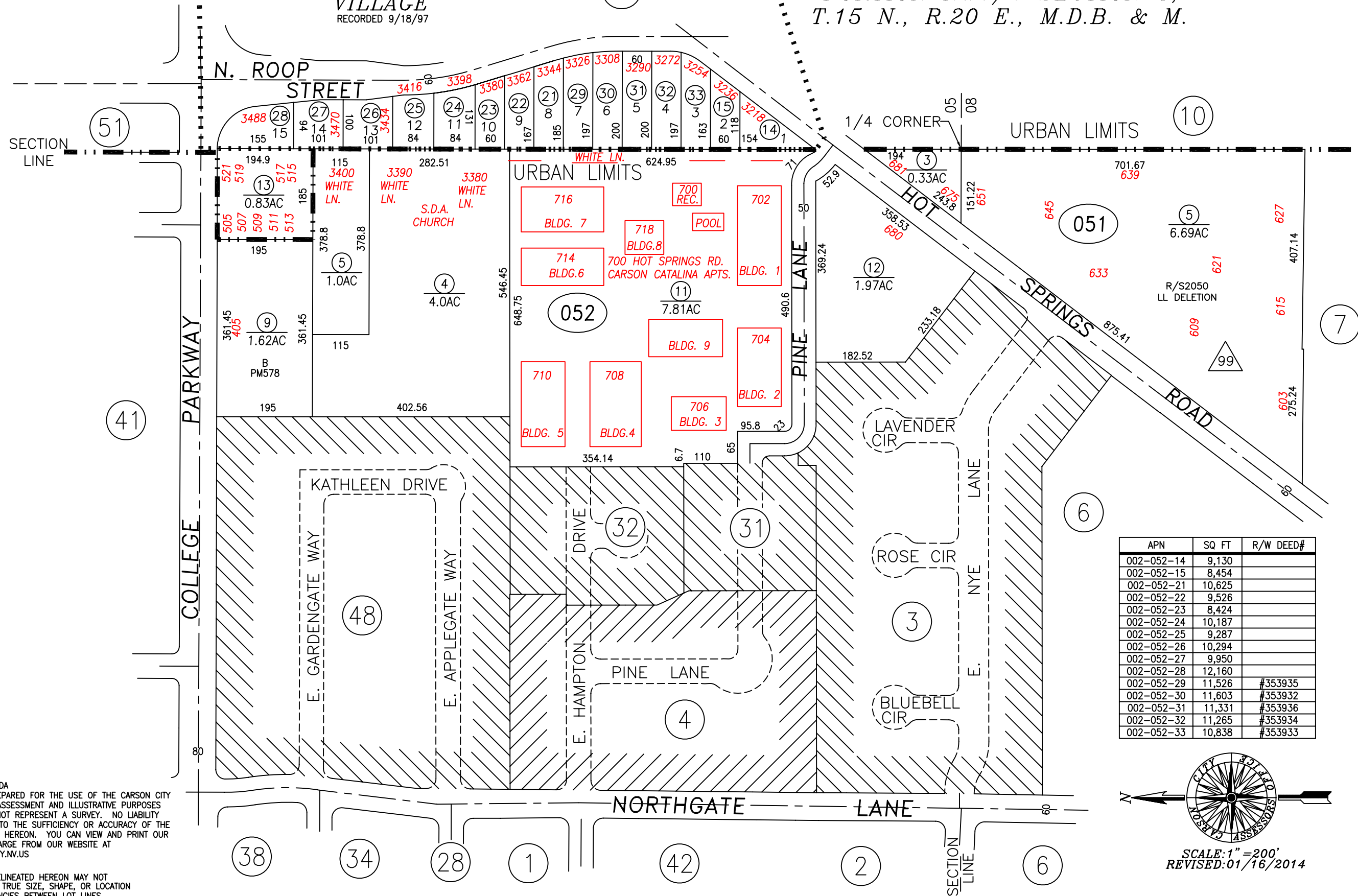
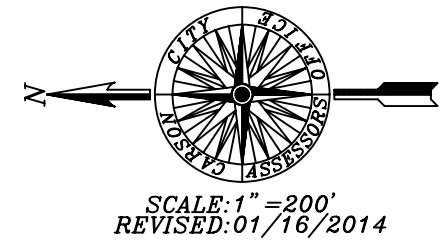


PORTION S1/2 SECTION 5,
AND
PORTION NW1/4 SECTION 8,
T.15 N., R.20 E., M.D.B. & M.

COLLEGE PARK VILLAGE
RECORDED 9/18/97



APN	SQ FT	R/W DEED#
002-052-14	9,130	
002-052-15	8,454	
002-052-21	10,625	
002-052-22	9,526	
002-052-23	8,424	
002-052-24	10,187	
002-052-25	9,287	
002-052-26	10,294	
002-052-27	9,950	
002-052-28	12,160	
002-052-29	11,526	#353935
002-052-30	11,603	#353932
002-052-31	11,331	#353936
002-052-32	11,265	#353934
002-052-33	10,838	#353933



SCALE: 1" = 200'
REVISED: 01/16/2014

CORRECTED PARCEL BOUNDARY LINE DISTANCE 002-052-12

CARSON CITY, NEVADA
THIS MAP IS PREPARED FOR THE USE OF THE CARSON CITY ASSESSOR FOR ASSESSMENT AND ILLUSTRATIVE PURPOSES ONLY. IT DOES NOT REPRESENT A SURVEY. NO LIABILITY IS ASSUMED AS TO THE SUFFICIENCY OR ACCURACY OF THE DATA DELINEATED HEREON. YOU CAN VIEW AND PRINT OUR MAPS AT NO CHARGE FROM OUR WEBSITE AT WWW.CARSON-CITY.NV.US

NOTE
SOME PARCELS DELINEATED HEREON MAY NOT BE PRESENTED IN TRUE SIZE, SHAPE, OR LOCATION DUE TO DISCREPANCIES BETWEEN LOT LINES.