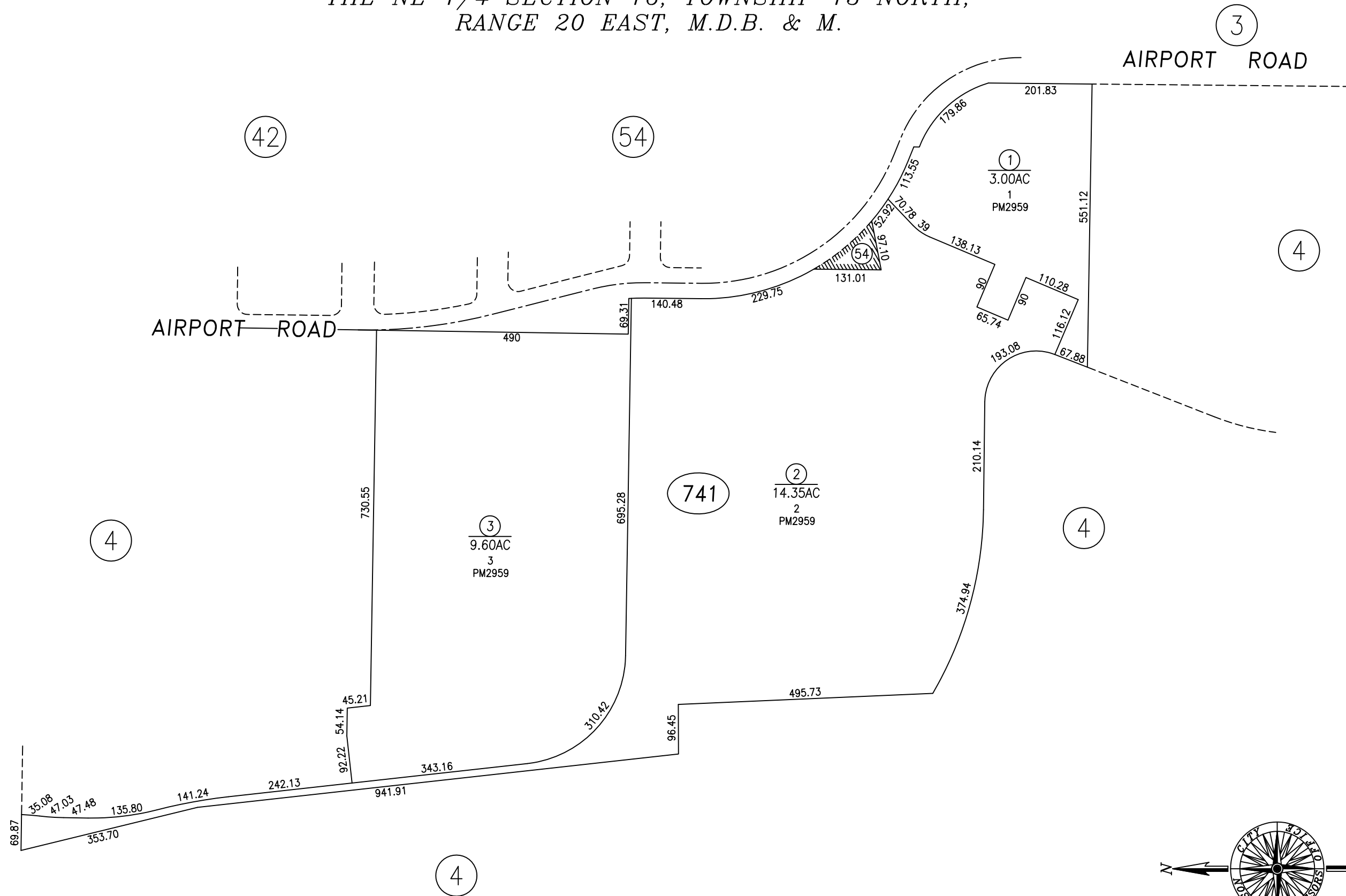


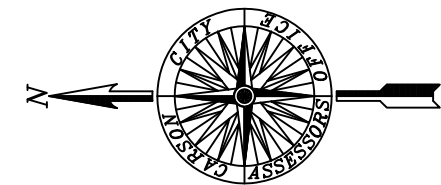
PORTION NW 1/4 SECTION 15 &
 THE NE 1/4 SECTION 16, TOWNSHIP 15 NORTH,
 RANGE 20 EAST, M.D.B. & M.



PARCEL 010-041-75 IS NOW 010-741-01, 02, & 03

CARSON CITY, NEVADA
 THIS MAP IS PREPARED FOR THE USE OF THE CARSON CITY
 ASSESSOR FOR ASSESSMENT AND ILLUSTRATIVE PURPOSES
 ONLY, IT DOES NOT REPRESENT A SURVEY. NO LIABILITY
 IS ASSUMED AS TO THE SUFFICIENCY OR ACCURACY OF THE
 DATA DELINEATED HEREON. YOU CAN VIEW AND PRINT OUR
 MAPS AT NO CHARGE FROM OUR WEBSITE AT: <http://ccapps.org/publicgis/>

NOTE
 SOME PARCELS DELINEATED HEREON MAY NOT
 BE PRESENTED IN TRUE SIZE, SHAPE, OR LOCATION
 DUE TO DISCREPANCIES BETWEEN LOT LINES.



SCALE: 1" = 200'
 REVISED: 03/26/2019