

# DATA

## SITE:

Parcel - 1	APN 009-551-31	2.34 acres
Parcel - 2	APN 009-551-08	1.32 acres
Parcel - 3	APN 009-551-03	3.00 acres
		6.61 acres

## PARKING:

Parcel - 1	84 spaces
Parcel - 2	34 spaces
Parcel - 3	106 spaces
<b>Total</b>	<b>224 spaces joint parking</b>

## BUILDINGS:

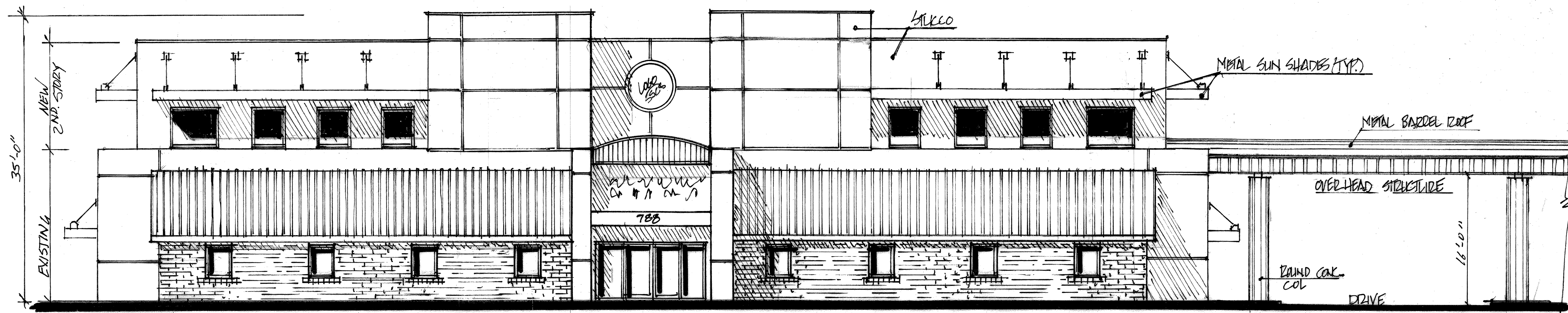
- A HIGH SCHOOL & JR. HIGH SCHOOL**  
 Existing Building (1 story)..... 24,742 sq. ft.  
 Future Second Story (Phase V)..... 10,218 sq. ft.  
 34,860 sq. ft.
- B STORAGE & REPAIR SHOP**  
 Existing Building (1 story)..... 5,000 sq. ft.
- C PERFORMING ARTS, GYM/FITNESS, VOCATIONAL AND TECHNICAL LABS, CLASS ROOMS & ADMIN. OFFICES**  
 Existing Building (1 story)..... 31,960 sq. ft.
- D SCHOOL FACILITIES EXPANSION**  
 (to be determined - High Sch., Jr. High, Elementary Sch., other related uses)  
 Future Building (Phase VI - 1 story)... 24,000 sq. ft.

**TOTAL BUILDINGS..... 95,920 sq. ft.**

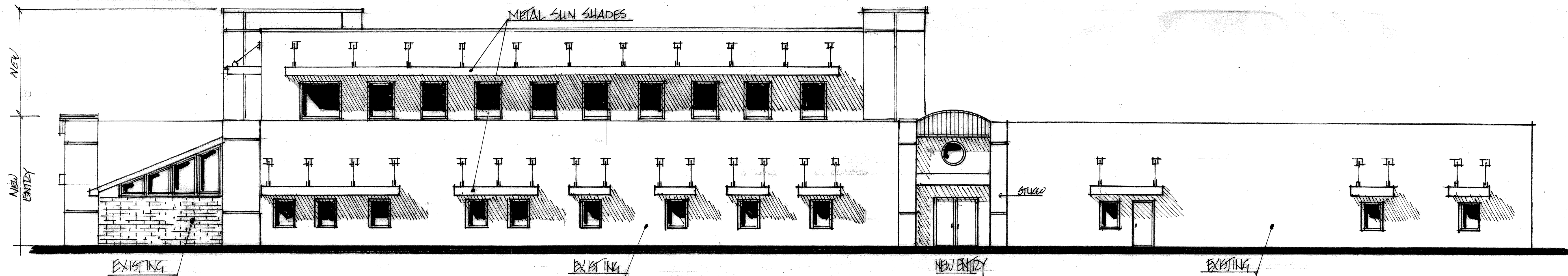
## LANDSCAPING/COVERAGE:

Atrium, Play Field, Playground, Existing Planters and Landscaping.....	1.70 acres	25.6 %
Buildings.....	2.20 acres	33.0%
Parking, drives, walks.....	2.76 acres	41.4%
	6.66 acres	100%

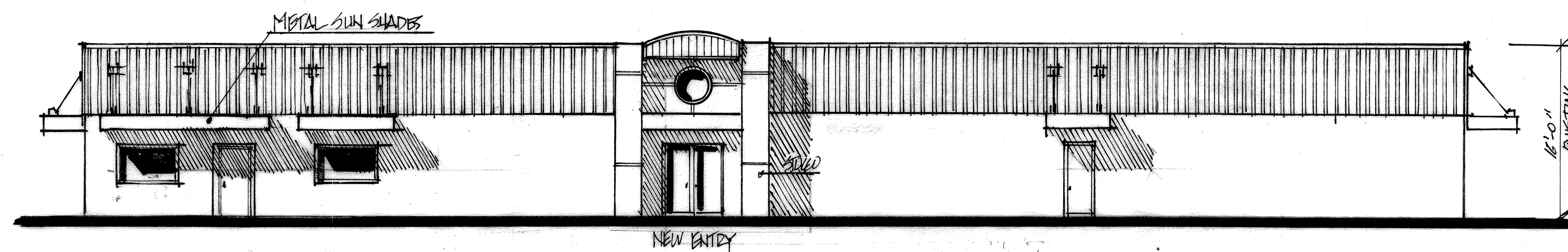
# CONCEPTUAL SITE PLAN - SILVER STATE CHARTER SCHOOLS



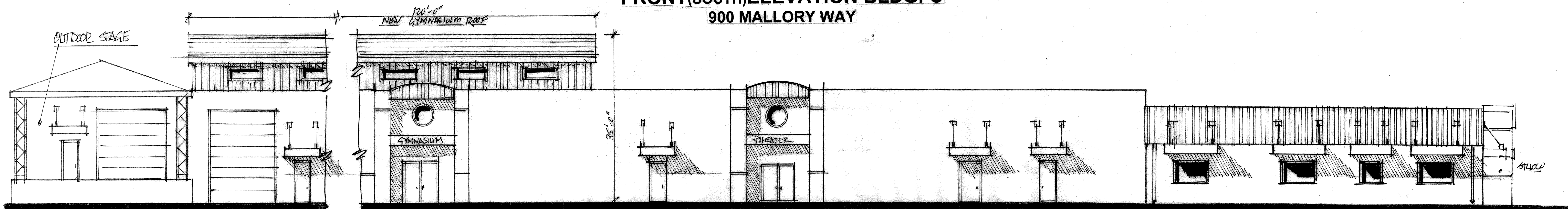
**FRONT (SOUTH) ELEVATION BLDG. A**  
788 FAIRVIEW



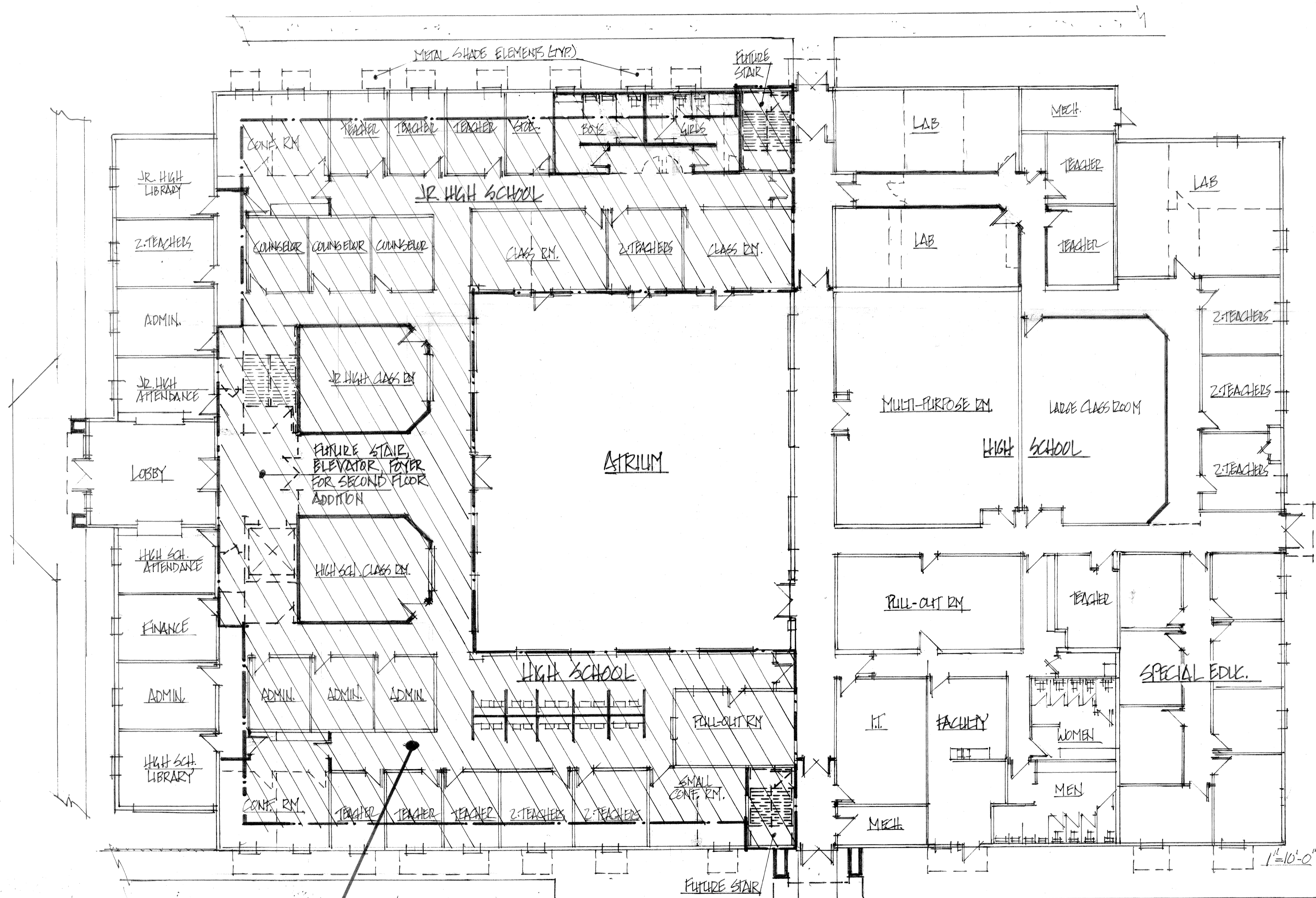
**EAST ELEVATION BLDG. A**



**FRONT (SOUTH) ELEVATION BLDG. C**  
900 MALLORY WAY



**WEST ELEVATION BLDG. C**

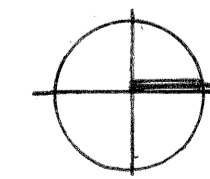


**FUTURE SECOND FLOOR 10,218 sq. ft.**

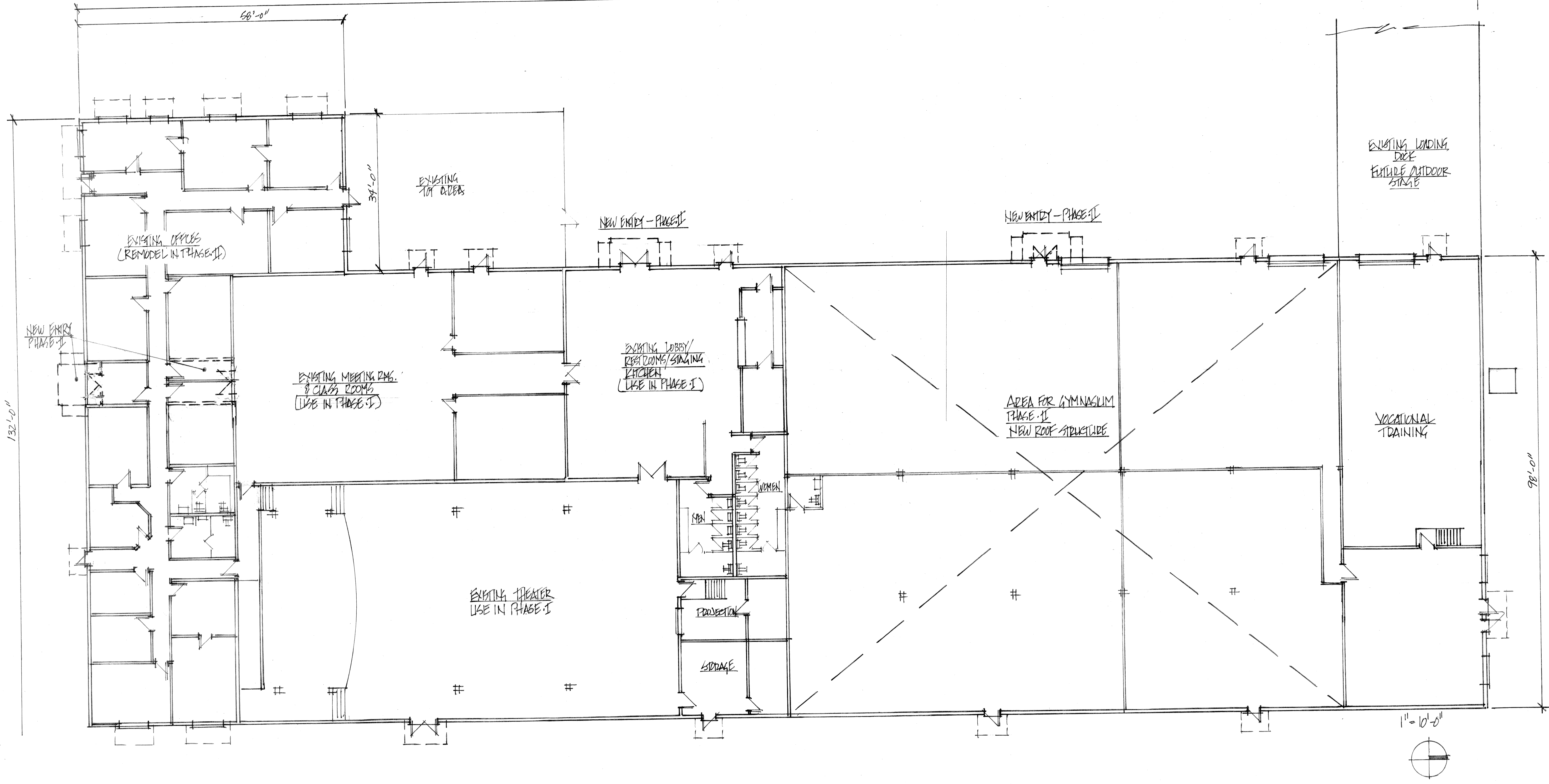
# FLOOR PLAN BLDG. A

788 Fairview Drive  
27,742 sq. ft.

- EXISTING WALLS
- - - REMOVED WALLS
- NEW CONSTRUCTION



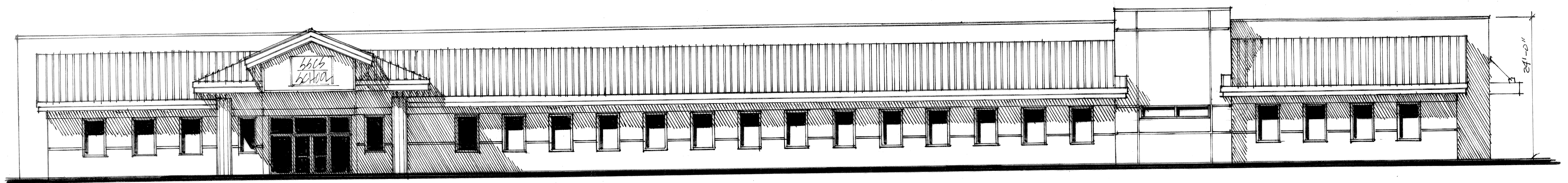
306'-0"



# FLOOR PLAN BLDG. C

900 Mallory Way

31,960 sq. ft.



FRONT (NORTH) ELEVATION BLDG. D  
MALLORY WAY  
24,000 sq. ft.

1/8" = 1'-0"