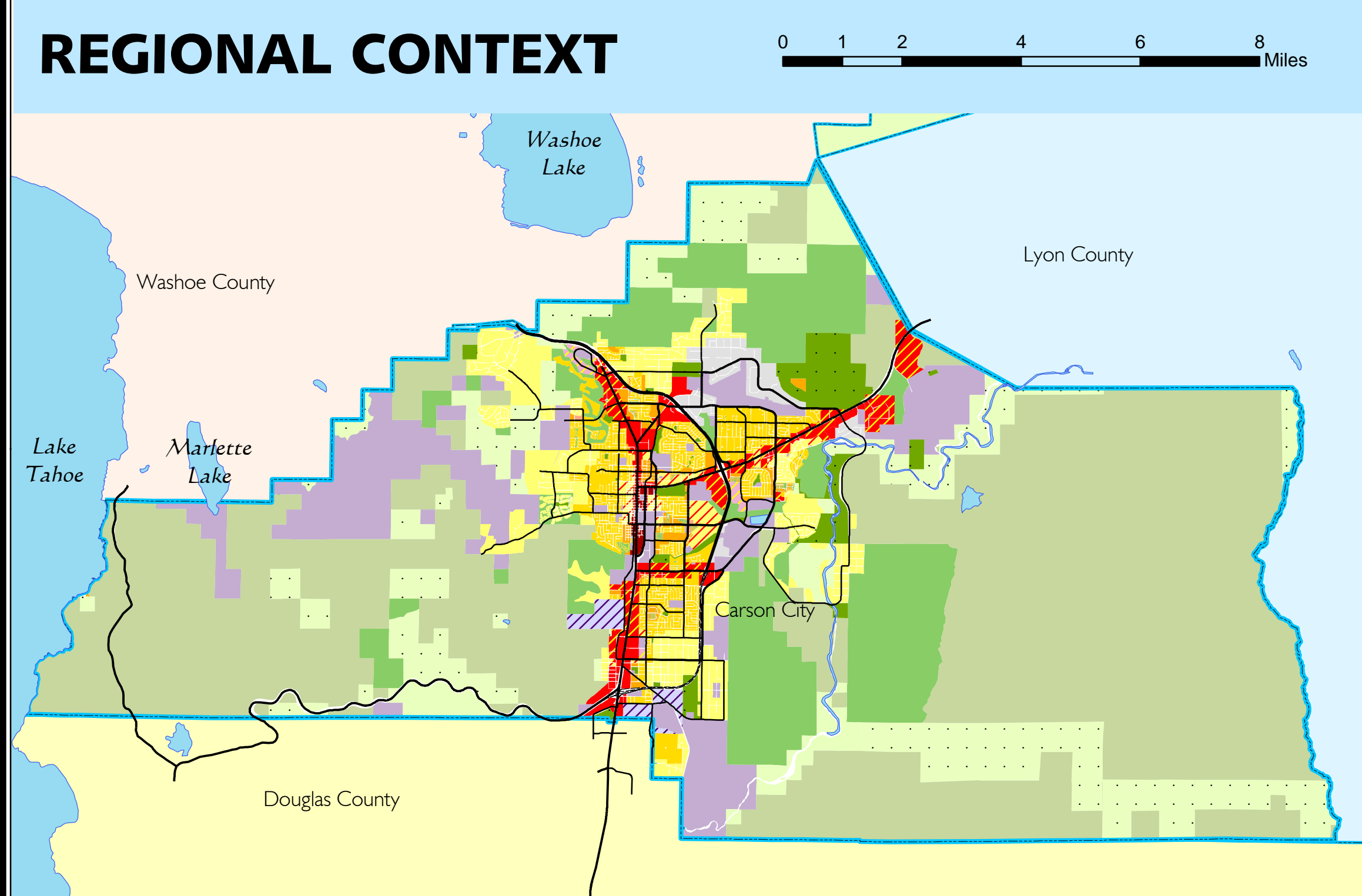


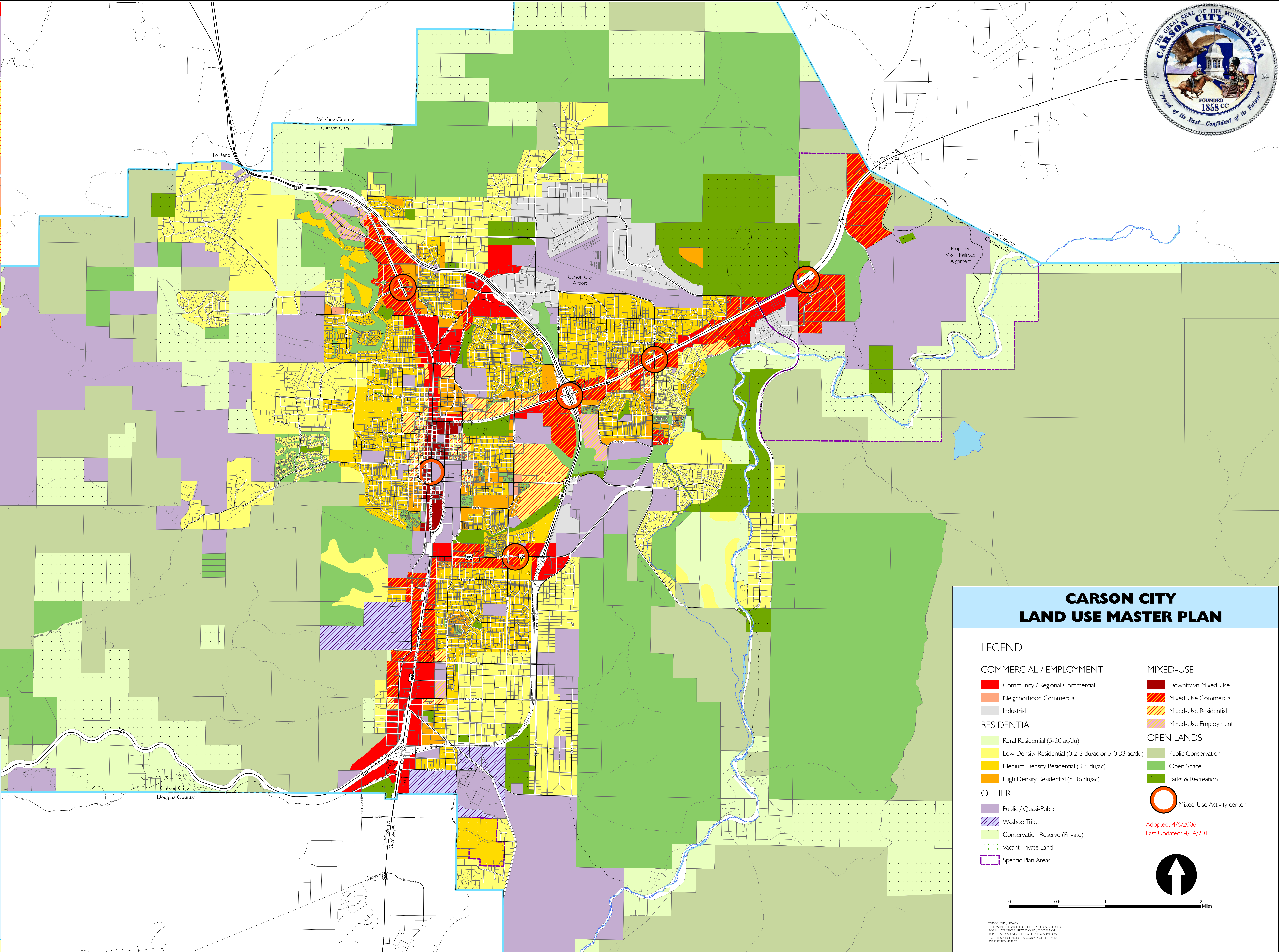
DOWNTOWN CORE

0 500 1,000 2,000 Feet



REGIONAL CONTEXT

0 1 2 4 6 8 Miles



**CARSON CITY
LAND USE MASTER PLAN**

LEGEND

- | | |
|---|---------------------------|
| COMMERCIAL / EMPLOYMENT | MIXED-USE |
| Community / Regional Commercial | Downtown Mixed-Use |
| Neighborhood Commercial | Mixed-Use Commercial |
| Industrial | Mixed-Use Residential |
| RESIDENTIAL | Mixed-Use Employment |
| Rural Residential (5-20 ac/du) | OPEN LANDS |
| Low Density Residential (0.2-3 du/ac or 5-0.33 ac/du) | Public Conservation |
| Medium Density Residential (3-8 du/ac) | Open Space |
| High Density Residential (8-36 du/ac) | Parks & Recreation |
| OTHER | Mixed-Use Activity center |
| Public / Quasi-Public | Adopted: 4/6/2006 |
| Washoe Tribe | Last Updated: 4/14/2011 |
| Conservation Reserve (Private) | |
| Vacant Private Land | |
| Specific Plan Areas | |

0 0.5 1 2 Miles

CARSON CITY, NEVADA
THIS MAP IS PREPARED FOR THE CITY OF CARSON CITY
FOR ILLUSTRATIVE PURPOSES ONLY. IT DOES NOT
REPRESENT A SURVEY. NO WARRANTIES ARE MADE
TO THE ACCURACY OR COMPLETENESS OF THE DATA
DEPICTED HEREON.