

COSTCO INTERTIE & VISTA GRANDE WATERLINE

CARSON CITY, NEVADA

PROJECT 04.1000

BOARD OF SUPERVISORS

ROBERT CROWELL	MAYOR
BRAD BONKOWSKI	SUPERVISOR
JIM SHIRK	SUPERVISOR
JOHN MCKENNA	SUPERVISOR
KAREN ABOWD	SUPERVISOR
ALAN GLOVER	CITY CLERK

OWNER

CARSON CITY PUBLIC WORKS
3505 Butti Way
Carson City, NV 89701
Phone (775) 887-2355
Fax (775) 887-2164

ENGINEER

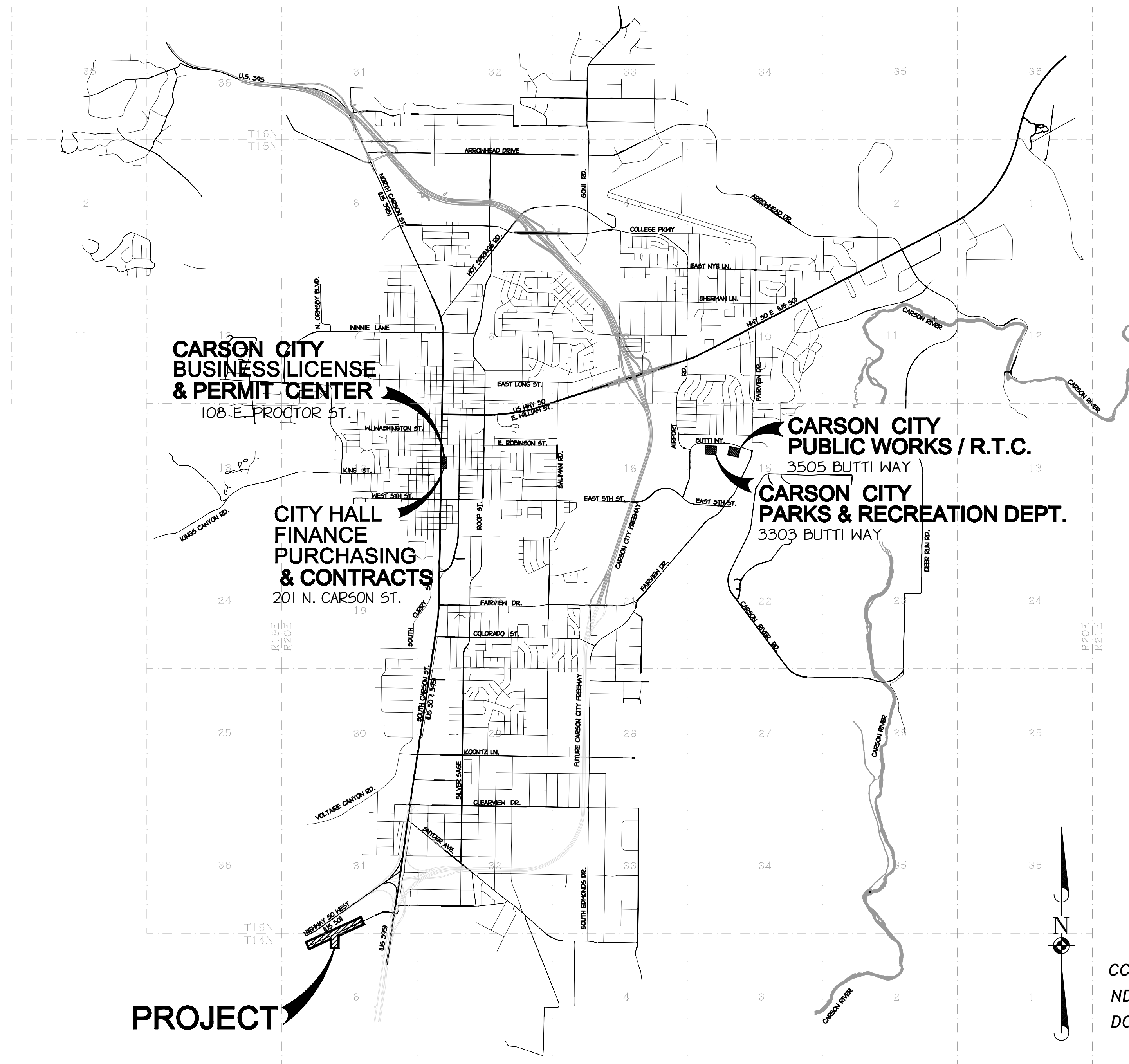
Manhard
CONSULTING LTD
3476 Executive Pointe Way, Suite 12
Carson City, NV 89706
(775) 882-5630

APPROVALS

DARREN SCHULZ, P.E., DEPUTY PUBLIC WORKS DIRECTOR AND ACTING CITY ENGINEER	DATE
CARL RUSCHMEYER, P.E., DOUGLAS COUNTY PUBLIC WORKS DIRECTOR	DATE
ERIK NILSSEN, P.E., DOUGLAS COUNTY ENGINEER	DATE

SHEET INDEX

SHEET NUMBER	SHEET TITLE
01	TITLE SHEET
02	NOTES & LEGEND
03	SHEET INDEX
04	CONTROL PLAN-VISTA GRANDE BLVD.
05	CONTROL PLAN-OLD CLEAR CREEK RD.
06	EROSION CONTROL PLAN
07	EROSION CONTROL PLAN
08	DEMOLITION PLAN
09	TYPICAL SECTION-VISTA GRANDE BLVD.
10	PLAN & PROFILE-"VG" 9+50 TO 15+00
11	PLAN & PROFILE-"VG" 15+00 TO 20+50
12	PLAN & PROFILE-"VG" 20+50 TO 26+00
13	PLAN & PROFILE-"VG" 26+00 TO 29+50
14	PLAN & PROFILE-"CC" 18+00 TO 23+50
15	PLAN & PROFILE-"CC" 23+50 TO 29+00
16	PLAN & PROFILE-"CC" 29+00 TO 32+50
17	SIGNING & STRIPING PLAN-VISTA GRANDE BLVD.
18	GRADING PLAN
19	PRV PIPING DETAIL AREA
20	PRV PIPING DETAILS
21	ELECTRICAL PLAN
22	ELECTRICAL DETAILS
23	STANDARD DETAILS
24	STANDARD DETAILS
25	STANDARD DETAILS
26	STANDARD DETAILS
27	STANDARD DETAILS
28	FUJI PARK PATH CONDUIT WORK



VICINITY MAP

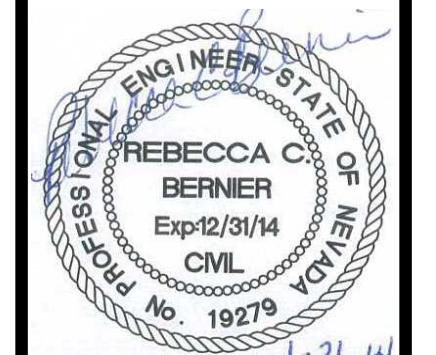
CCDES PERMIT APPLICATION NO. XX-XXX
NDEP - SAFE DRINKING WATER - APPROVED
DC SIP #00689



RCB
PROJ. MGR.:
CT
PROJ. ASSOC.:
RCB
CHECKED BY:
CCCNI5
DWG NO.:
SCALE (HORIZ):
SCALE (VERT):
PILOT DATE: JAN 2014

CARSON CITY DEPARTMENT
PUBLIC WORKS
3505 BUTTI WAY CARSON CITY, NEVADA 89701
PH: 887-2355 FAX: 887-2112

Manhard
CONSULTING LTD
3476 Executive Pointe Way, Suite 12
Carson City, NV 89706
PH: (775) 882-5630



REV.	DATE	DESCRIPTION	BY	APP.
1	11/14			
2				
3				
4				
5				
6				
7				
8				
9				
10				
11				
12				
13				
14				
15				
16				
17				
18				
19				
20				
21				
22				
23				
24				
25				
26				
27				
28				

COSTCO INTERTIE & VISTA GRANDE WATERLINE
PROJECT No: 04.1000
TITLE SHEET

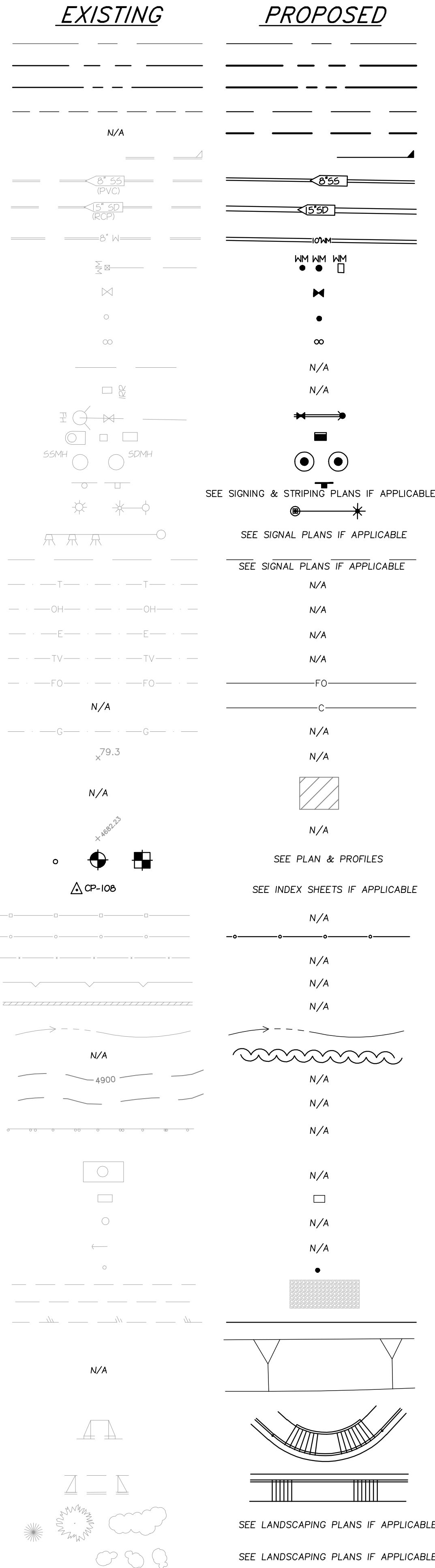
SHEET
01
OF
28

FOR BIDDING PURPOSES ONLY

ABBREVIATIONS

AB	AGGREGATE BASE	JNT	JOINT
ABAND	ABANDON	LF	LINICAL FEET
AC	ASPHALT CONCRETE	LT	LEFT
ACP	ARCH CONCRETE PIPE	MAX	MAXIMUM
ADJ	ADJUST	MDD	MAXIMUM DRY DENSITY
AGG	AGGREGATE	MH	MANHOLE
APPROX	APPROXIMATELY / APPROXIMATE	MIN	MINIMUM
ARV	AIR RELEASE VALVE	MON	MONUMENT
B-B	BACK TO BACK	MTN	MOUNTAIN
B/P	BOTTOM OF PIPE	NOM	NOMINAL
B/W	BACK OF WALK OR BOTTOM OF WALL	NDP	NO DIRECT PAYMENT
B.O.	BACK FACE CURB	NTS	NOT TO SCALE
BFC	BACK FACE CURB	O/H	OVERHEAD
BLDG	BUILDING	PC	POINT OF CURVATURE
BOF	BOTTOM OF FOOTING	PCC	POINT OF COMPOUND CURVATURE OR PORTLAND CEMENT CONCRETE
BM	BENCHMARK	PE	POLYETHYLENE OR PLAIN END
BTWN	BETWEEN	PED	PEDESTRIAN
C	CONDUIT	PLCS	PLACES
CC	CARSON CITY	PO	PUSH ON
C/G	CURB AND GUTTER	POC	POINT ON CURVE
C/L	CENTERLINE	POVC	POINT ON VERTICLE CURVE
CB	CATCH BASIN	PP	POWER POLE
CATV	CABLE TELEVISION	PRC	POINT OF REVERSE CURVATURE
CL	CLASS	PT	POINT OF TANGENCY/POINT
CMP	CORRUGATED METAL PIPE	PROP	PROPOSED
CNTRL	CONTROL	PRV	PRESSURE REDUCING VALVE
CONC	CONCRETE	PRVC	POINT OF REVERSE VERTICAL CURVATURE
CONST	CONSTRUCT	PVC	POLYVINYL CHLORIDE PIPE OR POINT OF VERTICAL CURVATURE
COORD	COORDINATE	PVI	POINT OF VERTICAL INTERSECTION
CR	CURB RETURN	PVT	POINT OF VERTICAL TANGENCY
CY	CUBIC YARD	PWMT	PAVEMENT
DEPT	DEPARTMENT	R	RADIUS
D	DITCH	RCP	REINFORCED CONCRETE PIPE
DI	DROP INLET OR DUCTILE IRON	RCPE	REINFORCED CONCRETE PIPE ELLIPTICAL
DIA	DIAMETER	RCW	RECLAIMED WATER
DIP	DUCTILE IRON PIPE	REM	REMOVE
DOM	DOMESTIC	RESTD	RESTRAINED
DR	DRIVE	RQD	REQUIRED
D/W	DRIVEWAY	R&R	REMOVE AND REPLACE
E-E	EDGE TO EDGE	RT	RIGHT
ELEC	ELECTRIC	R/W	RIGHT OF WAY
ELL	ELBOW	S	SLOPE
ELEV	ELEVATION	SD	STORM DRAIN
EP	EDGE OF PAVEMENT	SDDI	STORM DRAIN DROP INLET
EQUIV	EQUIVALENT	SF	SQUARE FOOT
ESMT	EASEMENT	SDMH	STORM DRAIN MANHOLE
EST	ESTIMATE	SS	SANITARY SEWER
EX	EXISTING	SSCO	SANITARY SEWER CLEAN OUT
FCA	FLANGED COUPLING ADAPTER	SMH	SANITARY SEWER MANHOLE
F-F	FACE TO FACE	ST	STREET
FES	FLARED END SECTION	STA	STATION
FCC	FRONT FACE OF CURB	STD	STANDARD
FG	FINISH GRADE	STL	STEEL
FH	FIRE HYDRANT	S/W	SIDEWALK
FL	FLOW LINE	T	TRANSFORMER
FLG	FLANGE	TB	TOP OF BANK
FM	FORCE MAIN	TC	TOP OF CURB
FT	FEET	TELE	TELEPHONE
G	GAS	TEMP	TEMPORARY
GB	GRADE BREAK	T/F	TOP OF FOUNDATION
GND	GROUND	T/P	TOP OF PIPE
GRD	GRADE	T/W	TOP OF WALL
GTD	GRADE TO DRAIN	TYP	TYPICAL
GV	GAS VALVE OR GATE VALVE	U/G	UNDER GROUND
ICV	IRRIGATION CONTROL VALVE	UN.O	UNLESS NOTED OTHERWISE
GW	GUY WIRE	VG	VALLEY GUTTER
HDWL	HEADWALL	W	WITH
HORIZ	HORIZONTAL	W/L	WITH LINE
HT	HEIGHT	WM	WATER METER OR WATER MAIN
IE	INVERT ELEVATION	WV	WATER VALVE
IP	IRON PIPE	WWF	WELDED WIRE FABRIC
IRR	IRRIGATION		

LEGEND



GENERAL NOTES

- ALL WORK SHALL CONFORM TO THE "AMERICAN WATER WORKS ASSOCIATION (AWWA) STANDARDS", "STANDARD SPECIFICATIONS FOR PUBLIC WORKS CONSTRUCTION" (SSPWC) AND THE "STANDARD DETAILS FOR PUBLIC WORKS CONSTRUCTION" (SDPWC) AS ADOPTED BY CARSON CITY. THE CONTRACTOR SHALL OBTAIN A PERMIT FOR PUBLIC WORKS CONSTRUCTION FROM THE CARSON CITY PERMIT CENTER PRIOR TO THE START OF CONSTRUCTION AND PICK UP PERMIT FROM DOUGLAS COUNTY COMMUNITY DEVELOPMENT. ALL CONDITIONS OF BOTH PERMITS SHALL BE FOLLOWED. THESE CONDITIONS ARE PROVIDED IN THE SPECIAL CONDITIONS.
 - ALL TRAFFIC CONTROL AND BARRICADING WITHIN THE CARSON CITY AND DOUGLAS COUNTY RIGHTS-OF-WAY SHALL CONFORM TO SECTION 100.33, 332.04 AND 332.05 OF THE STANDARD SPECIFICATIONS, PART VI OF THE MANUAL ON UNIFORM TRAFFIC CONTROL DEVICES, LATEST EDITION, AND THE UNR T2 CENTER, TEMPORARY TRAFFIC CONTROL GUIDELINES LATEST EDITION. A TRAFFIC CONTROL PLAN MUST BE SUBMITTED AND APPROVED BY THE CARSON CITY ENGINEERING DIVISION AND DOUGLAS COUNTY (VISTA GRANDE OR TOPSY LANE) PRIOR TO ANY STREET CLOSURES.
 - THE CONTRACTOR SHALL CALL UNDERGROUND SERVICE ALERT "CALL BEFORE YOU DIG" (811) OR (1-800-227-2600) AT LEAST TWO (2) WORKING DAYS PRIOR TO START OF CONSTRUCTION AND COMPLY WITH THE REQUIREMENTS OF NRS AND NAC 455 THROUGHOUT THE COURSE OF THE WORK. SEWER SERVICE LATERALS ARE NOT OWNED OR MARKED BY CARSON CITY.
 - THE CONTRACTOR SHALL CALL THE CARSON CITY ENGINEERING DIVISION (887-2300) AND DOUGLAS COUNTY (782-6237) TWO (2) WORKING DAYS PRIOR TO THE START OF CONSTRUCTION. THE CONTRACTOR SHALL CALL ONE (1) WORKING DAY PRIOR TO REQUIRED INSPECTIONS AND TESTING. THE REQUIRED INSPECTIONS AND TESTING ARE LISTED ON THE INSPECTION RECORD ISSUED WITH EACH PERMIT. THE CONTRACTOR MUST HAVE THE PERMIT NUMBER AND THE DESCRIPTION LISTED ON THE INSPECTION RECORD TO SCHEDULE REQUIRED INSPECTIONS AND TESTING. FOR CITY CONTRACTED PROJECTS, THE CONTRACTOR SHALL SCHEDULE INSPECTIONS PER THE CONTRACT DOCUMENTS.
 - FINAL INSPECTIONS WILL BE PERFORMED BY CARSON CITY ENGINEERING DIVISION AND DOUGLAS COUNTY ACCORDING TO THE CARSON CITY INSPECTIONS AND TESTING PROCEDURES (AND DOUGLAS COUNTY FOR ALL WORK PERFORMED IN DOUGLAS COUNTY). NOTE: THESE PROCEDURES REQUIRE SUBMITTAL OF RECORD DRAWING PRINTS BY THE CONTRACTOR AND 10 WORKING DAYS TO PREPARE A FINAL PUNCH LIST. ALL CONDITIONS OF THE FINAL INSPECTION MUST BE COMPLETED PRIOR TO FINAL ACCEPTANCE OR ANY APPROVAL OF A CERTIFICATE OF OCCUPANCY BY THE CARSON CITY ENGINEERING DIVISION.
 - MODIFICATIONS TO THE APPROVED PLANS REQUIRES REVIEW AND APPROVAL BY THE CARSON CITY ENGINEERING DIVISION AND DOUGLAS COUNTY COMMUNITY DEVELOPMENT AS APPLICABLE. WORK PERFORMED WITHOUT WRITTEN APPROVAL BY CARSON CITY ENGINEERING WILL REQUIRE REMOVAL AT THE CONTRACTORS EXPENSE.
 - THE APPROVED PLAN, PERMIT AND INSPECTION RECORD MUST BE ON THE JOB SITE AT ALL TIMES.
 - PLAN APPROVAL FOR SEWER AND WATER CONSTRUCTION SHALL EXPIRE ONE YEAR FROM DATE OF APPROVAL UNLESS CONSTRUCTION HAS BEEN INITIATED. (CCMC 12.06.180F, 12.01.140D)
 - THE CONTRACTOR WILL BE SOLELY AND COMPLETELY RESPONSIBLE FOR ACQUIRING A STORMWATER DISCHARGE PERMIT FROM THE NEVADA DIVISION OF ENVIRONMENTAL PROTECTION (NDEP) INCLUDING DEVELOPING, SUBMITTING AND IMPLEMENTING A STORM WATER POLLUTION PREVENTION PLAN (SWPPP). THE CONTRACTOR SHALL DEVELOP, PLACE AND MAINTAIN STORM WATER PROTECTION DEVICES IN COMPLIANCE WITH THE NEVADA CONTRACTORS FIELD GUIDE FOR CONSTRUCTION SITE BEST MANAGEMENT PRACTICES (JUNE 2008).
 - THE LOCATION OF EXISTING UTILITIES (INCLUDING EXISTING SEWER LATERALS AND BUILDING SEWERS) SHOWN ON THESE DRAWINGS IS BASED ON THE BEST INFORMATION AVAILABLE TO THE ENGINEER. PRIOR TO BEGINNING CONSTRUCTION IT SHALL BE THE CONTRACTORS RESPONSIBILITY TO VERIFY THESE LOCATIONS AT THE PROPOSED POINTS OF CONNECTIONS AND IN AREAS OF POSSIBLE CONFLICT WITH NEW UTILITY INSTALLATION. POTHOLES IS REQUIRED. SHOULD THE CONTRACTOR FIND ANY DISCREPANCIES BETWEEN THE CONDITIONS EXISTING IN THE FIELD AND THE INFORMATION SHOWN ON THESE DRAWINGS, HE SHALL NOTIFY THE CONSTRUCTION MANAGER BEFORE PROCEEDING WITH CONSTRUCTION.
 - THE CONTRACTOR SHALL BE SOLELY AND COMPLETELY RESPONSIBLE FOR THE CONDITIONS OF THE JOB SITE, INCLUDING SAFETY OF ALL PERSONS AND PROPERTY DURING PERFORMANCE OF THE WORK. THIS REQUIREMENT WILL APPLY CONTINUOUSLY AND NOT BE LIMITED TO NORMAL WORKING HOURS. THE CONTRACTOR SHALL BE RESPONSIBLE FOR THE DESIGN AND CONSTRUCTION OF PROPER SHORING OF TRENCHES IN ACCORDANCE WITH OCCUPATIONAL SAFETY LAWS. THE DUTIES OF THE ENGINEER OR CONSTRUCTION MANAGER DO NOT INCLUDE REVIEW OF THE ADEQUACY OF THE CONTRACTOR'S SAFETY IN, ON, OR NEAR THE CONSTRUCTION SITE.
 - SHOULD IT APPEAR THAT THE WORK TO BE DONE, OR ANY MATTER RELATIVE THERETO, IS NOT SUFFICIENTLY DETAILED OR EXPLAINED ON THESE PLANS, THE CONTRACTOR SHALL CONTACT THE CONSTRUCTION MANAGER FOR SUCH FURTHER EXPLANATIONS AS MAY BE NECESSARY.
 - THE CONTRACTOR WILL BE RESPONSIBLE FOR THE REPLACEMENT OF ALL EXISTING IMPROVEMENTS DAMAGED OR DISTURBED BY THIS CONSTRUCTION PROJECT, INCLUDING: PCC CURB, GUTTER & SIDEWALK, PCC DRIVEWAY APRONS, THE ADJUSTMENT TO GRADE OF ALL MANHOLES AND VALVE BOXES AND PRIVATE IMPROVEMENTS OUTSIDE THE PAVED ROADWAY NOT SHOWN FOR REMOVAL OR MODIFICATION ON THESE DRAWINGS (NDP FOR REPAIRS UNLESS NOTED OTHERWISE ON DRAWINGS)
 - SEE INDEX & CONTROL PLAN FOR HORIZONTAL & VERTICAL CONTROL INFORMATION.
 - DATE OF AERIAL PHOTOGRAPHY, 2010, DATE OF TOPOGRAPHIC MAPPING, JULY 2010.
 - ALL DIMENSIONS, OFFSETS AND RADII ARE TO FRONT FACE OF CURB UNLESS OTHERWISE NOTED.
 - ALL EARTHWORK AND PAVING WORK SHALL CONFORM TO THE REQUIREMENTS CONTAINED IN THE GEOTECHNICAL INVESTIGATION TITLED "VISTA GRANDE BOOSTER PUMP STATION PROJECT" OCTOBER 2010 AS PREPARED BY GEOCON CONSULTANTS, INC. CONTRACTOR SHALL MAINTAIN A COPY OF THIS DOCUMENT ON THE PROJECT SITE THROUGHOUT CONSTRUCTION.
 - CONTRACTOR SHALL PROVIDE PERMANENT PAVEMENT PATCH FOR ALL UNDERGROUND UTILITY INSTALLATIONS AT ALL LOCATIONS OUTSIDE OF PAVEMENT RECONSTRUCTION OR WIDENING AREAS AS SHOWN ON DRAWINGS. CONTRACTOR SHALL PROVIDE TEMPORARY PAVEMENT PATCH IN PAVEMENT RECONSTRUCTION AREAS UNLESS OTHERWISE DIRECTED BY CONSTRUCTION MANAGER.
 - CONTRACTOR SHALL POTHOLE ALL EXISTING UNDERGROUND FACILITIES IN POTENTIAL CONFLICT WITH NEW UTILITIES PRIOR TO CONSTRUCTION UNLESS OTHERWISE ARRANGED WITH CONSTRUCTION MANAGER AND UTILITY COMPANY. COORDINATE POTHOLES AND RELOCATION'S WITH CONSTRUCTION MANAGER AND APPROPRIATE UTILITY COMPANIES OR CARSON CITY DEPARTMENT. (NO DIRECT PAYMENT FOR POTHOLES)
 - ALL MANHOLES, VAULTS AND MONUMENTS SHALL BE ADJUSTED TO FINISHED GRADE. ALL DISTURBED MONUMENTS SHALL BE RESET BY A LICENSED SURVEYOR IN ACCORDANCE WITH NAC REQUIREMENTS.
 - ALL MANHOLES LOCATED IN DOUGLAS COUNTY SHALL HAVE A CONCRETE COLLAR THAT IS EVEN WITH THE FINISHED SURFACE PER DOUGLAS COUNTY STANDARD DETAIL.
 - PER NAC 445A.67145 (6) WATER MAIN MUST NOT BE PLACED INTO SERVICE UNTIL:
 - THE WATER MAIN HAS BEEN DISINFECTED IN ACCORDANCE WITH AWWA STANDARD C651.
 - THE DISPOSAL OF ANY SPENT CHLORINE SOLUTIONS MUST BE COORDINATED WITH NDEP'S BUREAU OF WATER POLLUTION CONTROL (BWPIC).
 - ANALYSES OF THE WATER MAIN WHICH INDICATE THAT THE WATER MEETS PRIMARY DRINKING WATER STANDARDS FOR COLIFORM BACTERIA (ABSENT FOR COLIFORM BACTERIA) HAVE BEEN OBTAINED AND REPORTED TO BSDW PER AWWA STANDARD C651. TWO SETS OF CONSECUTIVE SAMPLES MUST BE TAKEN AT LEAST 24 HOURS APART FROM EVERY 1,200 FEET OF MAIN, AT THE END OF THE LINE, AND FROM EACH BRANCH.
 - UTILITY CONTACTS:

UTILITY	UTILITY PROVIDER	CONTACT
WATER	CARSON CITY PUBLIC WORKS OPERATIONS DOUGLAS COUNTY UTILITIES	CITY'S DESIGNATED INSPECTOR* RON ROMAN (775) 782-9989
SANITARY SEWER, AND RECLAIMED WATER	CARSON CITY PUBLIC WORKS OPERATIONS DOUGLAS COUNTY UTILITIES	CITY'S DESIGNATED INSPECTOR* RON ROMAN (775) 782-9989
STORM DRAIN AND TRAFFIC FACILITIES	CARSON CITY STREETS DEPARTMENT DOUGLAS COUNTY UTILITIES	CITY'S DESIGNATED INSPECTOR* RON ROMAN (775) 782-9989
ELECTRICAL POWER	NV ENERGY	DON FRENCH (775) 834-2903
TELEPHONE	AT&T (CARSON CITY) FRONTIER COMMUNICATIONS (DOUGLAS)	TOM CUNNING (775) 448-9250 COREY BOLTON (775) 782-0969
NATURAL GAS	SOUTHWEST GAS	LARRY GIBSON (775) 887-2863
CABLE TELEVISION	CHARTER COMMUNICATIONS	JARED BEISNER (775) 221-4102
- *FOR AFTER HOURS EMERGENCIES REGARDING WATER OR SEWER CALL SHERIFFS OFFICE DISPATCH (775) 887-2008.

PROJ. MGR.: RCB
 PROJ. ASSOC.: RCB
 CHECKED BY: RCB
 DWG NO.: CCCC15
 SCALE (HORIZ):
 SCALE (VERT):
 PLOT DATE: JAN 2014

CARSON CITY PUBLIC WORKS DEPARTMENT
 3505 BUTTE WAY CARSON CITY, NEVADA 89701
 PH: 887-2555 FAX: 887-2112

Manhard CONSULTING LTD.
 3496 Resolute Parkway, Suite 12 Carson City, NV 89706
 PH: (775) 882-5650 FAX: (775) 882-7282



REV.	DATE	DESCRIPTION	BY	APP.

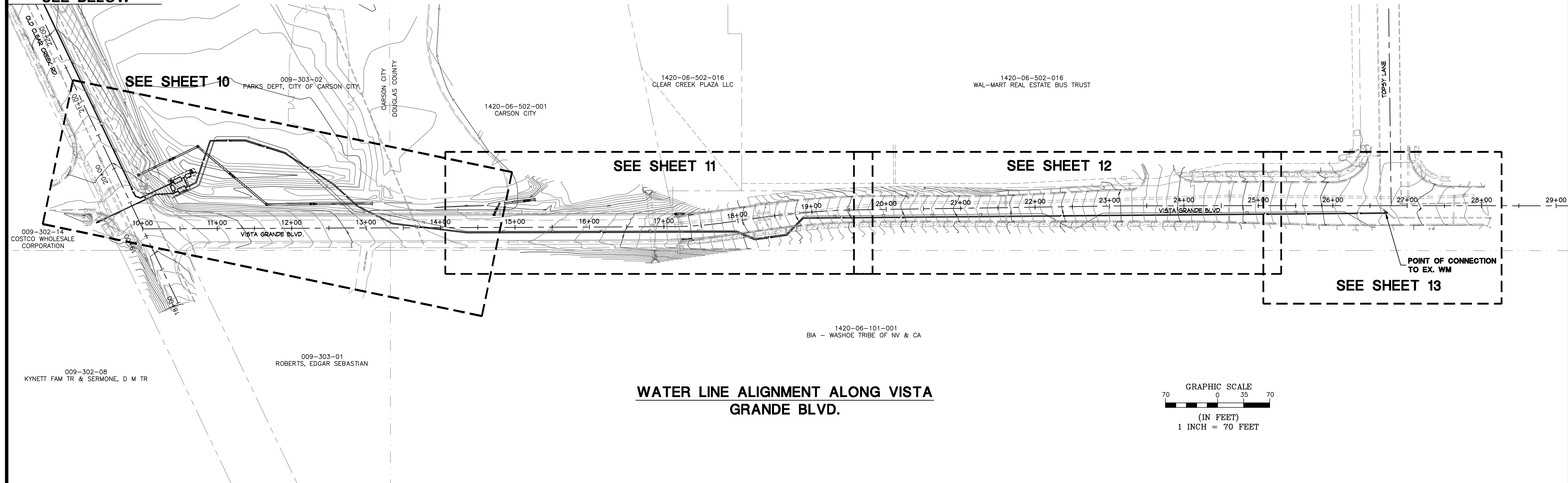
COSTCO INTERTIE & VISTA GRANDE WATERLINE PROJECT
 PROJECT No: 04.1000

NOTES & LEGEND

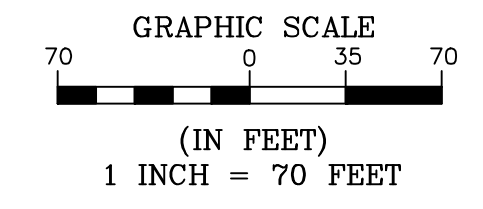
SHEET 02 OF 28

FOR BIDDING PURPOSES ONLY

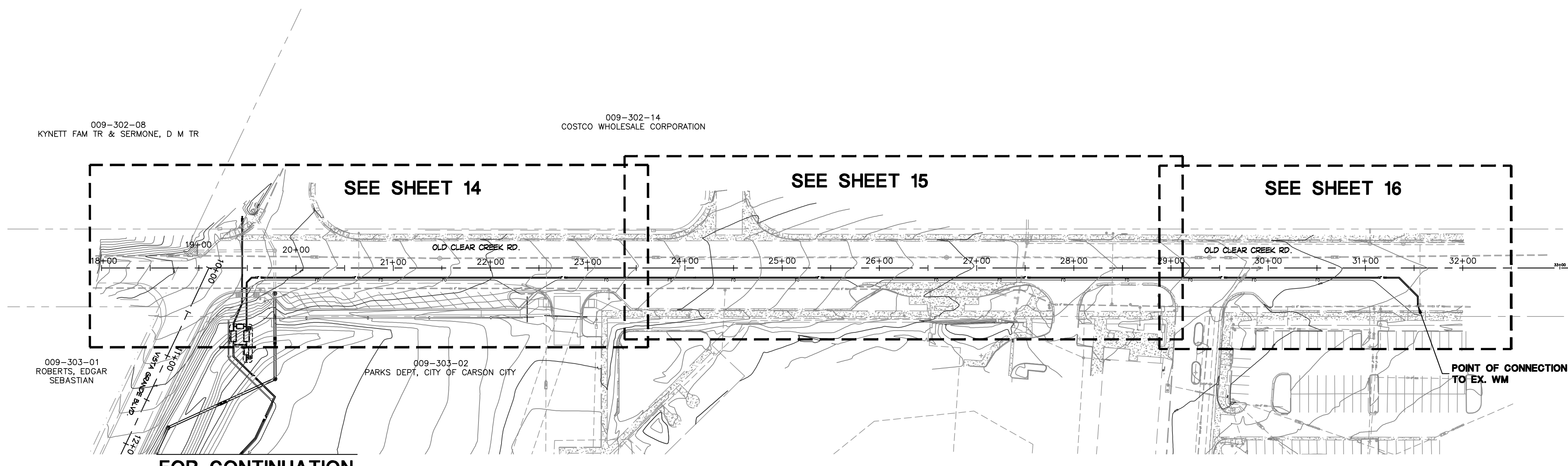
FOR CONTINUATION
SEE BELOW



**WATER LINE ALIGNMENT ALONG VISTA
GRANDE BLVD.**

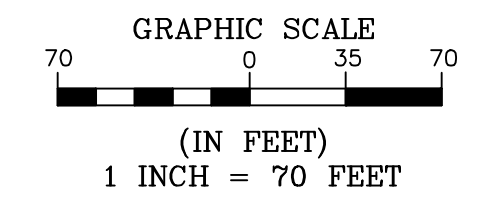


January 13, 2014 - 15:11 Draw Name: P:\Costco\15\4\4\1\Final Drawing\PLAN SET\VISTA GRANDE\03 SHEET INDEX.dwg Modified By: Rebecca



FOR CONTINUATION
SEE ABOVE

**WATER LINE ALIGNMENT ALONG OLD
CLEAR CREEK ROAD**



PROJ. MGR.: RCB
 PROJ. ASSOC.: RCB
 CHECKED BY: RCB
 DWG NO.: CCCCN15
 SCALE (HORIZ): 1" = 70'
 SCALE (VERT):
 PLOT DATE: JAN 2014

**CARSON CITY
PUBLIC WORKS DEPARTMENT**
 3505 BUTTE WAY CARSON CITY, NEVADA 89701
 PH: 887-2355 FAX: 887-2112

**Manhard
CONSULTING LTD.**
 5946 Francisco Parkway, Suite 12 Carson City, NV 89706
 PH: (775) 882-5630



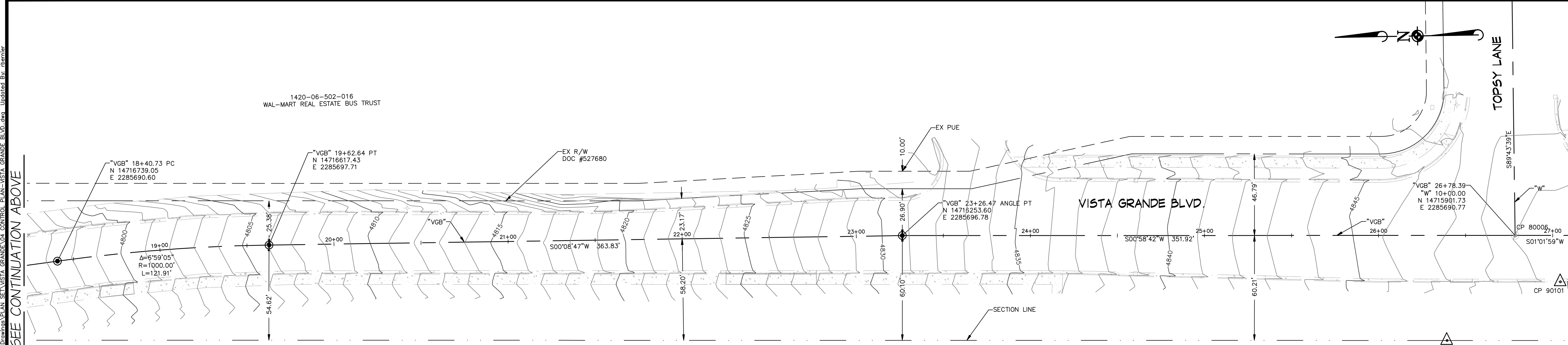
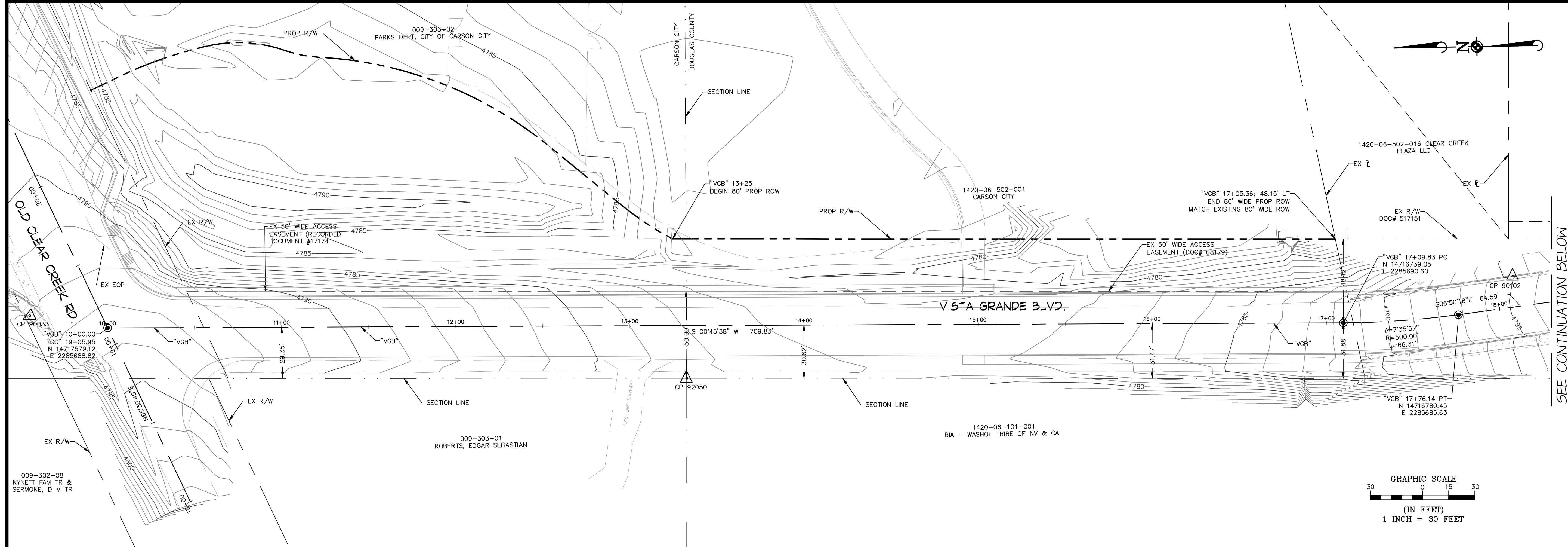
REV.	DATE	DESCRIPTION	BY	APP.

COSTCO INTERTIE & VISTA GRANDE WATERLINE
 PROJECT No: 04.1000
 SHEET INDEX

SHEET
03
 OF
 28

FOR BIDDING PURPOSES ONLY

Date: 11/15/2014 07:52
 Path: N:\Projects\14-0015\14-0015_Vista_Grande_Road_Control_Plan_Vista_Grande_Bldg.dwg
 Updated By: abramir



LEGEND

- PROPOSED CLASS "A" MONUMENT
- EXISTING CLASS "A" MONUMENT
- CALCULATED POINT (NO MONUMENT)
- △ CONTROL POINT DATA (SEE TABLE)
- CENTER LINE
- EX RIGHT-OF-WAY LINE
- EX PROPERTY LINE
- EX EASEMENT LINE
- PROPOSED PERMANENT EASEMENT LINE
- TEMPORARY CONSTRUCTION LIMITS
- PROPOSED RIGHT-OF-WAY LINE

BASIS OF BEARING

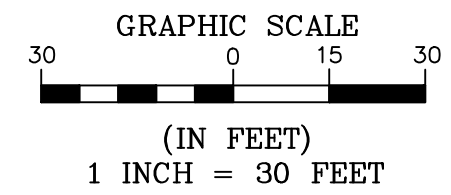
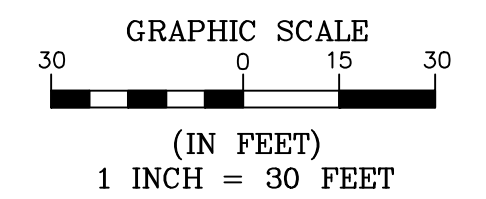
NORTH AMERICAN DATUM OF 1983 AS BASED ON FEDERAL BASE NETWORK/COOPERATIVE BASE NETWORK OBSERVATIONS IN 1994 (AKA NAD83/94), NEVADA STATE PLANE WEST ZONE AS DETERMINED WITH REAL TIME KINEMATIC (RTK) GPS OBSERVATIONS MADE BETWEEN FEBRUARY 2, 2011 AND MARCH 23, 2011 WITH CORRECTIONS TRANSMITTED BY THE REGIONAL BASE NETWORK CONTINUOUSLY OPERATING REFERENCE STATION (CORS) D011. GROUND COORDINATES HEREON REFLECT GRID COORDINATES MULTIPLIED BY A COMBINED GRID TO GROUND FACTOR OF 1.0002 (AKA CARSON CITY MODIFIED).

BASIS OF ELEVATION

THE BASIS OF ELEVATION FOR THIS PROJECT IS A 2" BRASS CAP CARSON CITY CONTROL MONUMENT STAMPED C0033, LOCATED IN THE BACK OF SIDEWALK HANDICAP RAMP NORTH OF THE INTERSECTION OF CLEAR CREEK ROAD AND VISTA GRANDE ROAD, ELEVATION=4792.67 (NAVD 88)

CONTROL POINT DATA

POINT #	NORTHING	EASTING	ELEVATION	DESC
80005	14715941.84	2285631.18	4848.29	BLM MONUMENT
80006	14715901.74	2285690.70	4848.35	CENTERLINE MONUMENT IN WELL
90033	14717623.65	2285696.62	4792.67	BRASS DISK CONTROL MONUMENT
90101	14715876.12	2285663.68	4849.85	PK NAIL
90102	14716771.62	2285704.46	4795.35	PK NAIL
90104	14717975.50	2286679.39	4771.18	PK NAIL
90105	14717892.13	2286486.32	4773.03	PK NAIL
90106	14717175.48	2286106.32	4781.60	PK NAIL
92050	14717247.05	2285654.16	4783.35	BLM MONUMENT



SEE CONTINUATION BELOW

PROJ. MGR.: RCB
 PROJ. ASSOC.: CTF
 CHECKED BY: RCB
 DWG NO.: CCCC15
 SCALE (HORIZ): 1" = 30'
 SCALE (VERT):
 PILOT DATE: JAN 2014

CARSON CITY DEPARTMENT
PUBLIC WORKS DEPARTMENT
 3505 BUTTE WAY CARSON CITY, NEVADA 89701
 PH: 887-2355 FAX: 887-2112

Manhard CONSULTING LTD
 3476 Praterline Parkway, Suite 12
 Carson City, NV 89706
 PH: (775) 882-5650 FAX: (775) 885-7282

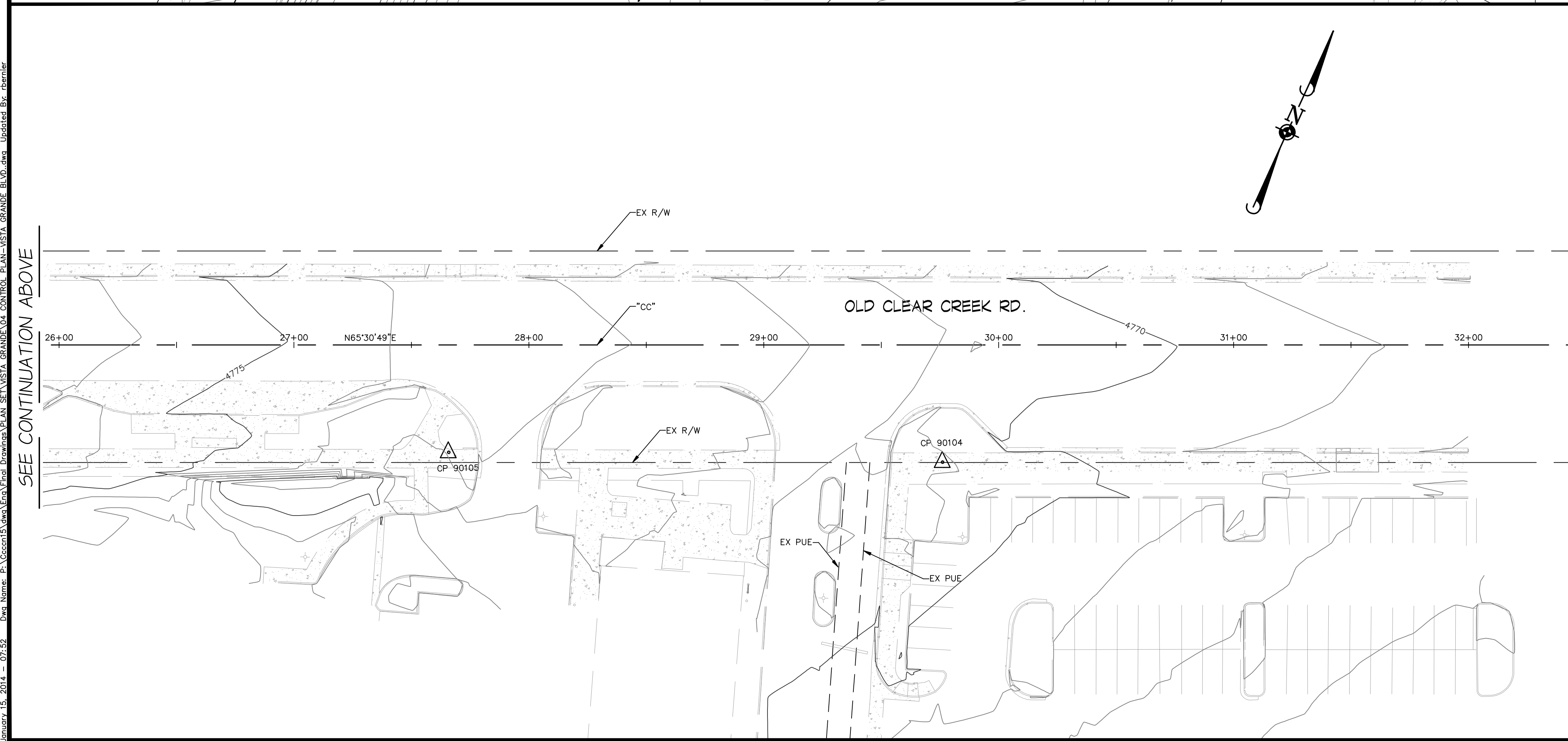
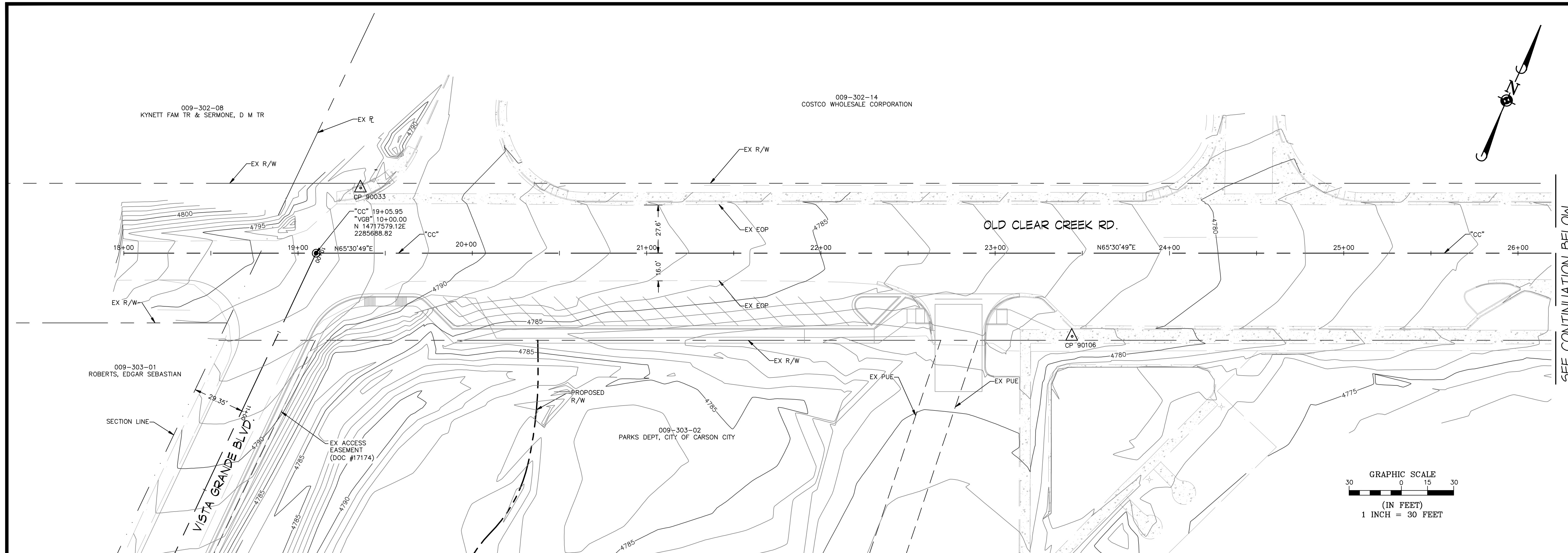
REV.	DATE	DESCRIPTION	BY	APP.

COSTCO INTERTIE & VISTA GRANDE WATERLINE
 PROJECT No: 04.1000
 CONTROL PLAN

SHEET
04
 OF
28

FOR BIDDING PURPOSES ONLY

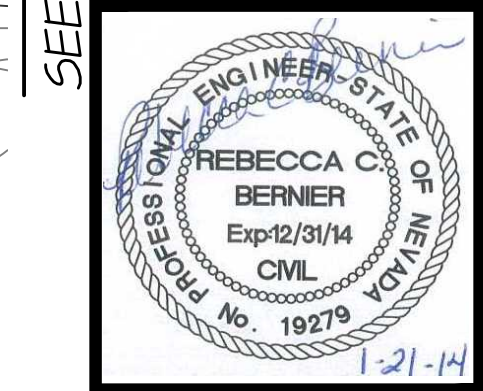
January 15, 2014 - 02:52 - Data Name: P:\Coccolis\15\New\Site\Plan SET VISTA GRANDE.DWG CONTROL PLAN VISTA GRANDE.BLD.DWG Updated By: abramir



PROJ. MGR.: RCB
 PROJ. ASSOC.: RCB
 CHECKED BY: RCB
 DWG NO.: CCCCN15
 SCALE (HORIZ): 1" = 30'
 SCALE (VERT):
 PILOT DATE: JAN 2014

CARSON CITY DEPARTMENT
PUBLIC WORKS DEPARTMENT
 3505 BUTTE WAY CARSON CITY, NEVADA 89701
 PH: 887-2355 FAX: 887-2112

Manhard CONSULTING LTD.
 8476 Paradise Parkway, Suite 12
 Reno, NV 89502
 PH: (775) 882-5650



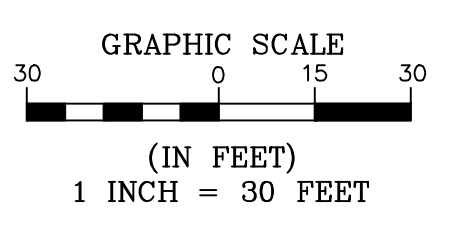
REV.	DATE	DESCRIPTION	BY	APP.

LEGEND

- PROPOSED CLASS "A" MONUMENT
- EXISTING CLASS "A" MONUMENT
- CALCULATED POINT (NO MONUMENT)
- CONTROL POINT DATA (SEE TABLE)
- CENTER LINE
- EX RIGHT-OF-WAY LINE
- EX PROPERTY LINE
- EX EASEMENT LINE
- PROPOSED PERMANENT EASEMENT LINE
- TEMPORARY CONSTRUCTION LIMITS
- PROPOSED RIGHT-OF-WAY LINE

CONTROL POINT DATA

POINT #	NORTHING	EASTING	ELEVATION	DESC
80005	14715941.84	2285631.18	4848.29	BLM MONUMENT
80006	14715901.74	2285690.70	4848.35	CENTERLINE MONUMENT IN WELL
90033	14717623.65	2285696.62	4792.67	BRASS DISK CONTROL MONUMENT
90101	14715876.12	2285663.68	4849.85	PK NAIL
90102	14716771.62	2285704.46	4795.35	PK NAIL
90104	14717975.50	2286679.39	4771.18	PK NAIL
90105	14717892.13	2286486.32	4773.03	PK NAIL
90106	14717715.48	2286106.32	4781.60	PK NAIL
92050	14717247.05	2285654.16	4783.35	BLM MONUMENT



SEE CONTINUATION ABOVE

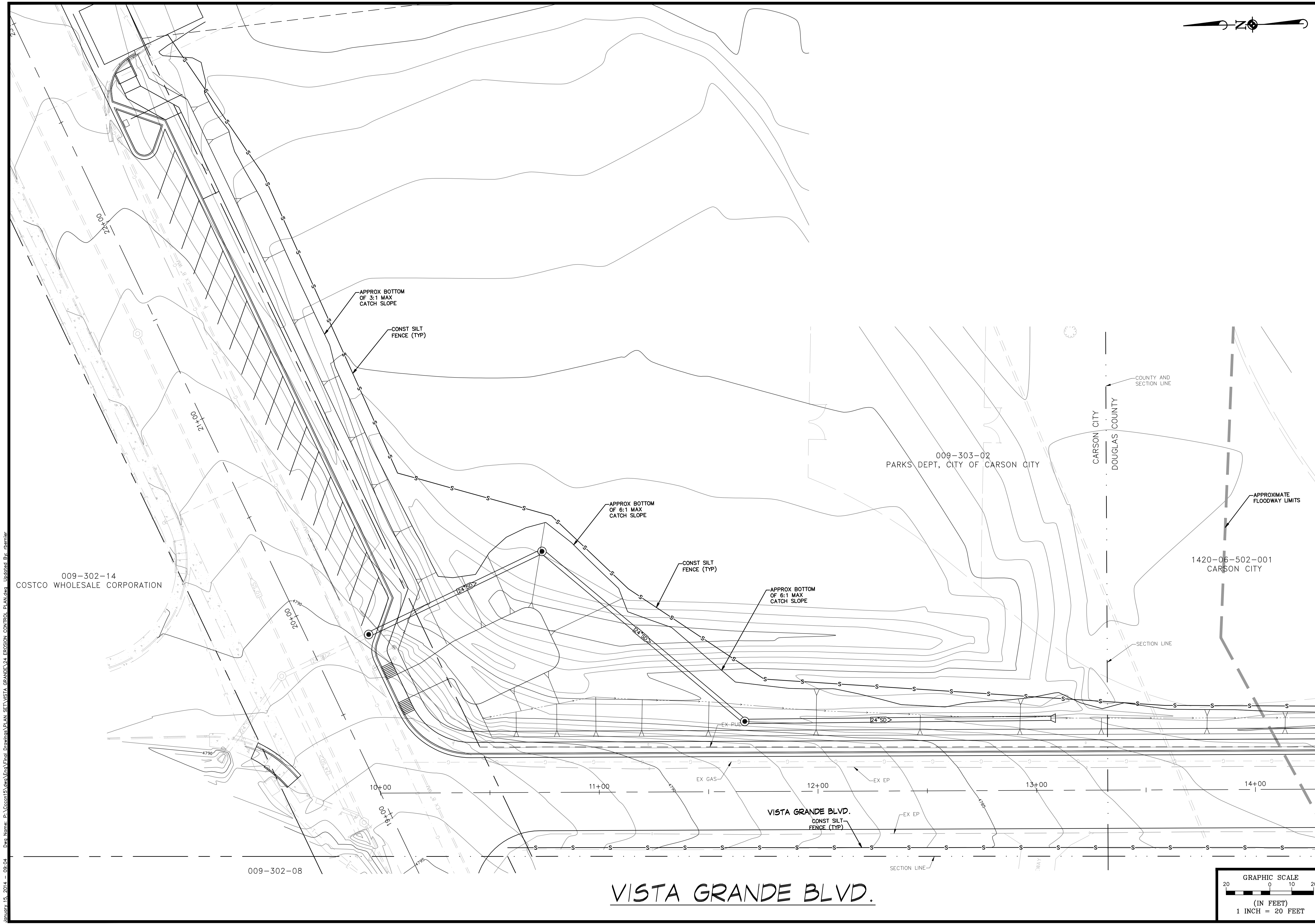
SEE CONTINUATION BELOW

COSTCO INTERIE & VISTA GRANDE WATERLINE
 PROJECT No: 04.1000
 CONTROL PLAN

SHEET
 05
 OF
 28

FOR BIDDING PURPOSES ONLY

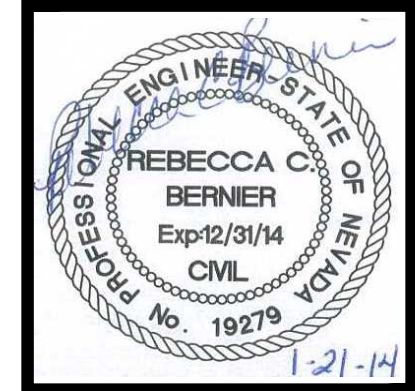
January 15, 2014 - 09:04 - Proj Name: Vista Grande Blv. Erosion Control Plan - Modified By: rbenier



PROJ. MGR.: RCB
 PROJ. ASSOC.: CTF
 CHECKED BY: RCB
 DWG NO.: CCCC15
 SCALE (HORIZ): 1" = 20'
 SCALE (VERT):
 PILOT DATE: JAN 2014

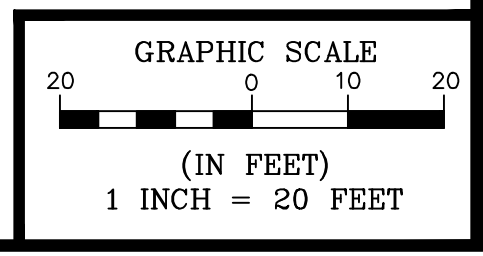
CARSON CITY DEPARTMENT
PUBLIC WORKS
 3505 BUTTE WAY CARSON CITY, NEVADA 89701
 PH: 887-2355 FAX: 887-2112

Manhard CONSULTING LTD.
 3476 Paradise Parkway, Suite 12
 Reno, NV 89502
 PH: (775) 882-5630



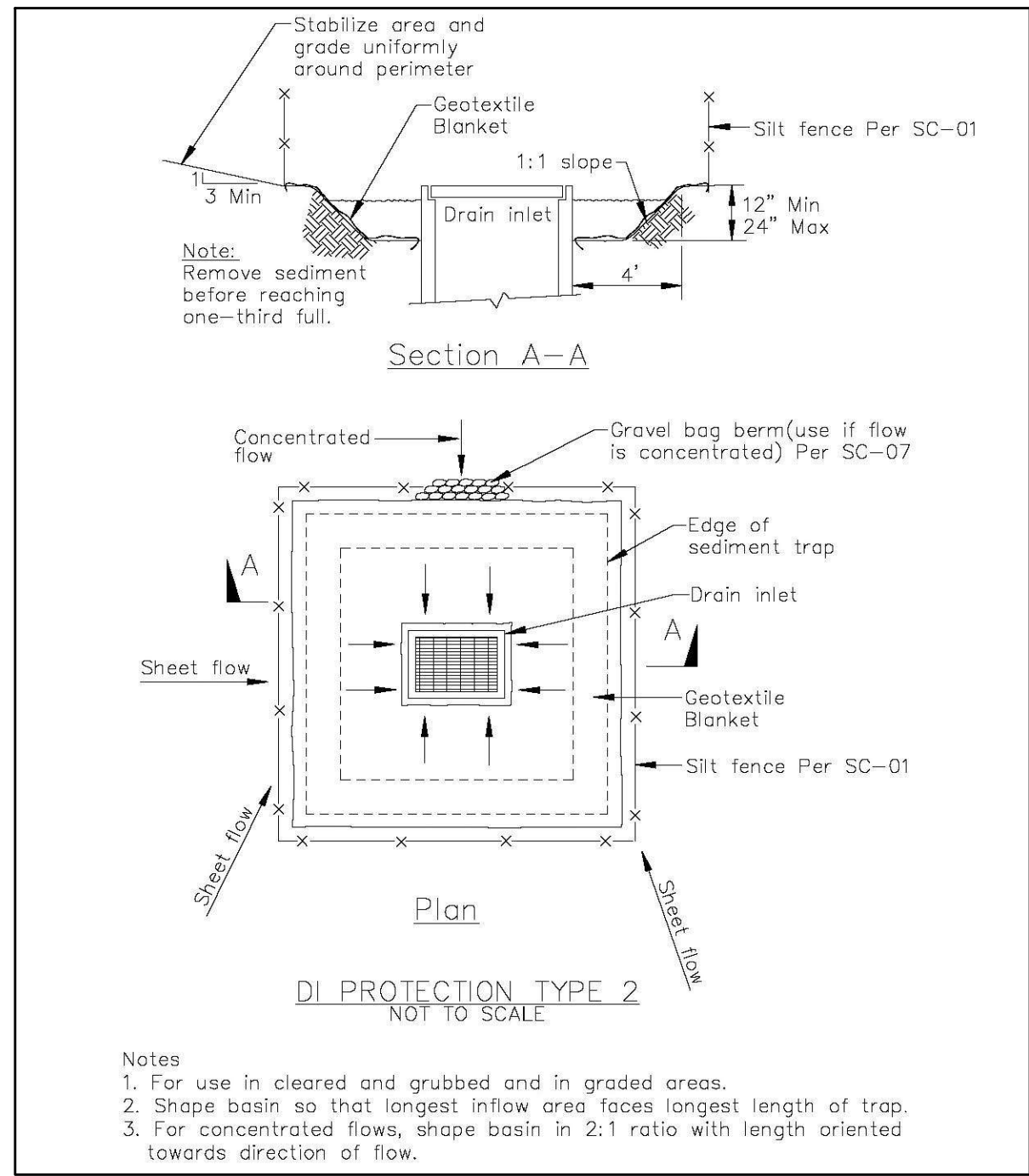
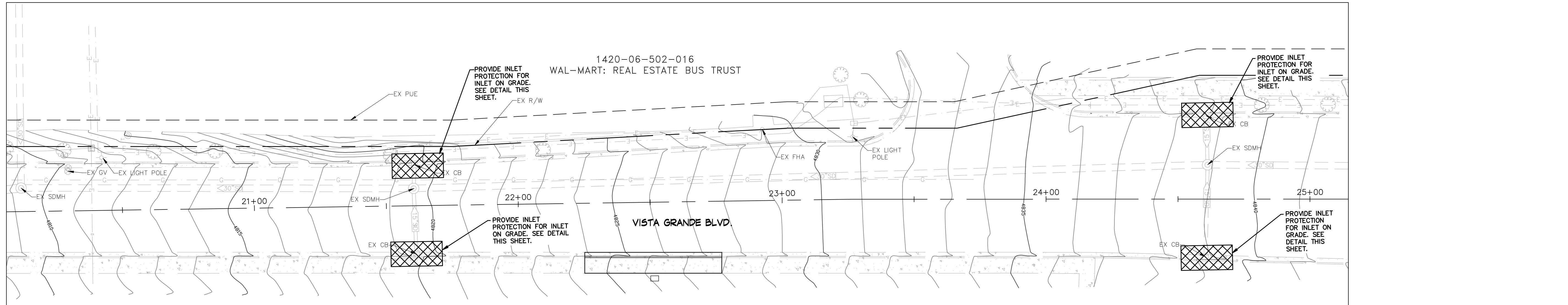
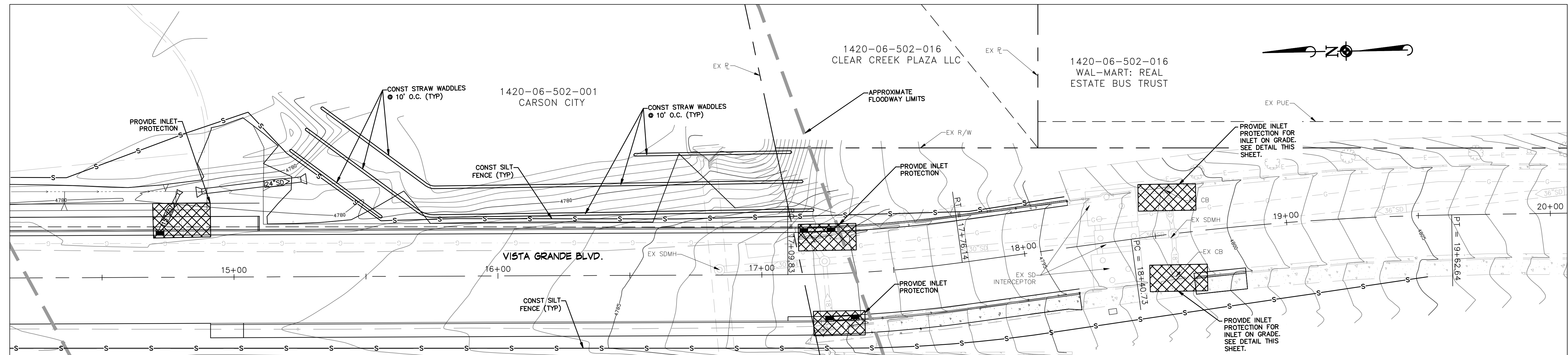
REV.	DATE	DESCRIPTION	BY	APP.

COSTCO INTERTIE & VISTA GRANDE WATERLINE
PROJECT No: 04.1000
EROSION CONTROL PLAN

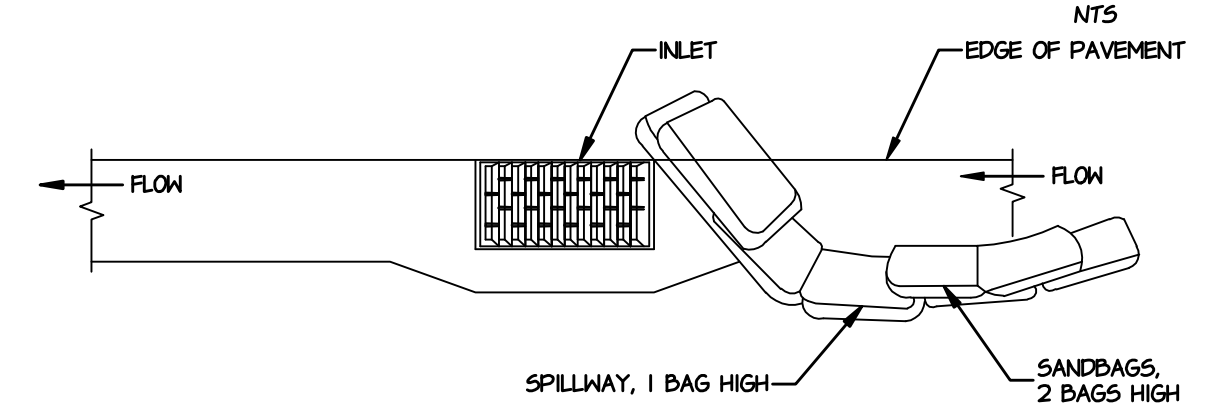


SHEET
06
 OF
28

FOR BIDDING PURPOSES ONLY

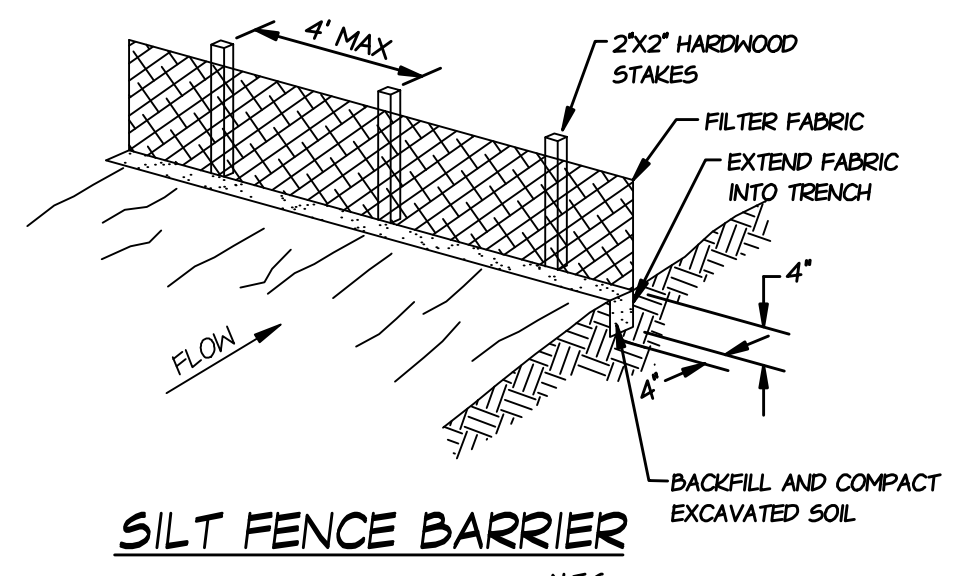


TYPICAL PROTECTION FOR DI
N.T.S.

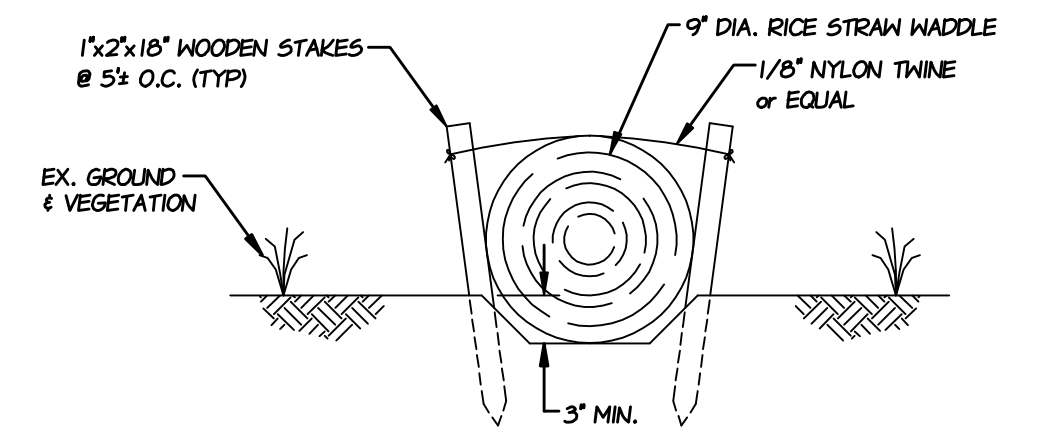


TYPICAL PROTECTION FOR INLET ON GRADE
N.T.S.

- NOTES:**
1. INTENDED FOR TEMPORARY SHORT-TERM USE.
 2. USE TO MANAGE CURB WATER FLOW.
 3. SEDIMENT CAPTURED BEHIND SANDBAGS SHALL BE REMOVED WEEKLY DURING CONSTRUCTION.
 4. INLET PROTECTION MUST BE PROPERLY MAINTAINED WHILE IN PLACE AND REMOVED WHEN REQUIREMENTS OF NDEP PERMIT HAVE BEEN MET.



SILT FENCE BARRIER
N.T.S.

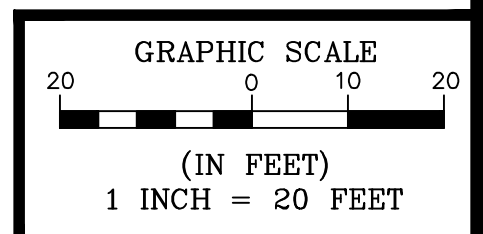


SEDIMENT LOG DETAIL
N.T.S.

- NOTES:**
1. 9" DIA MINIMUM, 12" DIA. PREFERRED.

GENERAL NOTES

1. CONTRACTOR IS RESPONSIBLE FOR OBTAINING A SHPPP PERMIT AND MEETING ALL OF ITS CONDITIONS.
2. CONTRACTOR SHALL MONITOR ALL EROSION/SEDIMENT CONTROL FACILITIES ON A WEEKLY SCHEDULE AND DURING RAINFALL/SNOW MELT CONDITIONS. THIS MONITORING WILL ENSURE THAT FACILITIES ARE IN WORKING ORDER AND NO SEDIMENT IS TRANSPORTED OFF SITE.
3. ALL STRUCTURES WILL BE CONSTRUCTED TO CONFORM TO THE 'CONSTRUCTION SITE BEST MANAGEMENT PRACTICES' FOR THE STATE OF NEVADA, REVISED 2006.
4. THE CONTRACTOR IS RESPONSIBLE FOR PREVENTING FUGITIVE DUST FROM LEAVING THE SITE BY MEANS OF EITHER WATER AND/OR A PERMANENT DUST PALLIATIVE.
5. THE CONTRACTOR SHALL USE BEST MANAGEMENT PRACTICES (BMP'S) THROUGHOUT THE PROJECT SITE DURING CONSTRUCTION AND PROVIDE PERMANENT EROSION CONTROL AS DEEMED NECESSARY BY THE CONSTRUCTION MANAGER.
6. UPON COMPLETION OF CONSTRUCTION ACTIVITIES ALL BMP'S TO REMAIN IN PLACE FOR LONG TERM SEEDING REQUIREMENTS SUCH AS STRAW WADDLES AND SILT FENCES TO PROTECT SLOPES ARE TO BE REPAIRED OR REPLACED AS NEEDED. UPON FINAL ACCEPTANCE OF THESE BMP'S, CARSON CITY SHALL TAKE OVER RESPONSIBILITY FOR THEM AND THE PERMITS AS REQUIRED BY THE STATE.



COSTCO INTERTIE & VISTA GRANDE WATERLINE
PROJECT No: 04.1000
EROSION CONTROL PLAN

SHEET
07
OF
28

FOR BIDDING PURPOSES ONLY

PROJ. MGR.: RCB
PROJ. ASSOC.: CTF
CHECKED BY: RCB
DWG NO.: CCCC15
SCALE (HORIZ): 1" = 20'
SCALE (VERT):
PILOT DATE: JAN 2014

CARSON CITY DEPARTMENT OF PUBLIC WORKS
3505 BUTTE WAY, CARSON CITY, NEVADA 89701
PH: 867-2355 FAX: 867-2112

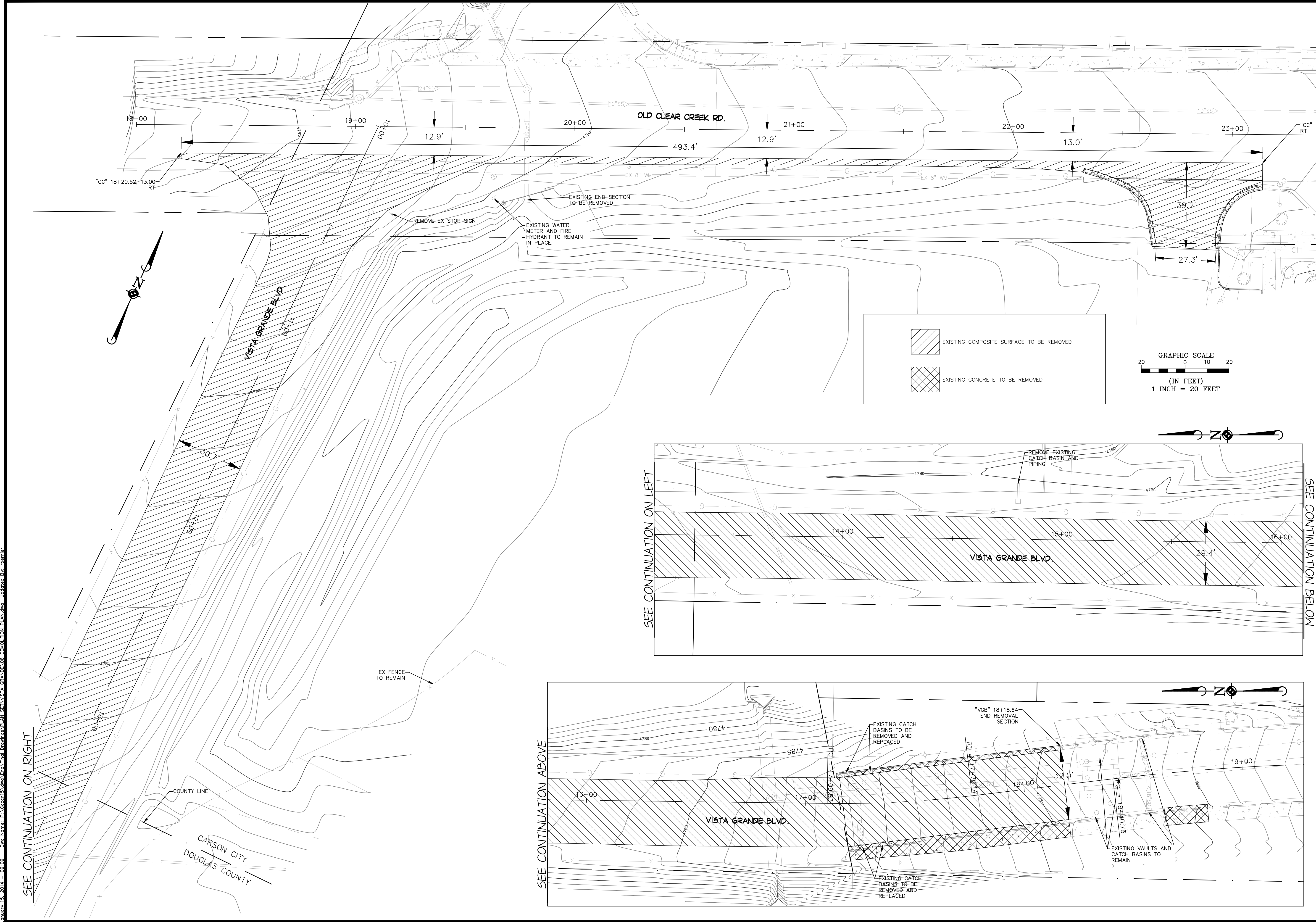
Manhard CONSULTING LTD.
3446 Reservoir Parkway, Suite 12, Carson City, NV 89702
PH: (775) 882-5630



REV.	DATE	DESCRIPTION	BY	APP.

January 15, 2014 - 09:04 - Date Name: P:\Costco13\Man\Costco\Drawings\PLAN SET\VISTA GRANDE\24 EROSION CONTROL PLAN.dwg - Updated By: aberner

January 15, 2014 - 09:09 Date Name: Pa.Coccolini\John.Vin\Final_Demolition_Plan SET VISTA GRANDE DE DEMOLITION PLAN.dwg Updated By: abernier



SEE CONTINUATION ON RIGHT

CARSON CITY
DOUGLAS COUNTY

SEE CONTINUATION ABOVE

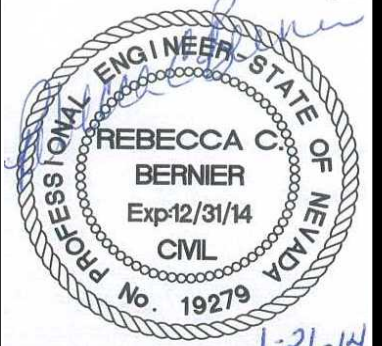
SEE CONTINUATION ON LEFT

SEE CONTINUATION BELOW

COSTCO INTERTIE & VISTA GRANDE WATERLINE
 PROJECT No: 04.1000
 DEMOLITION PLAN

SHEET
 08
 OF
 28

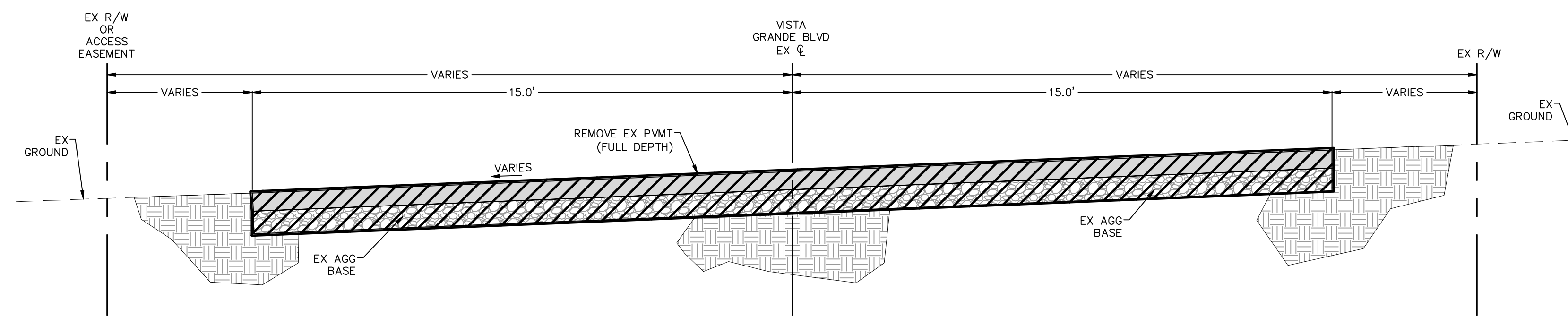
REV.	DATE	DESCRIPTION	BY	APP.
1				
2				
3				
4				
5				
6				
7				
8				
9				
10				



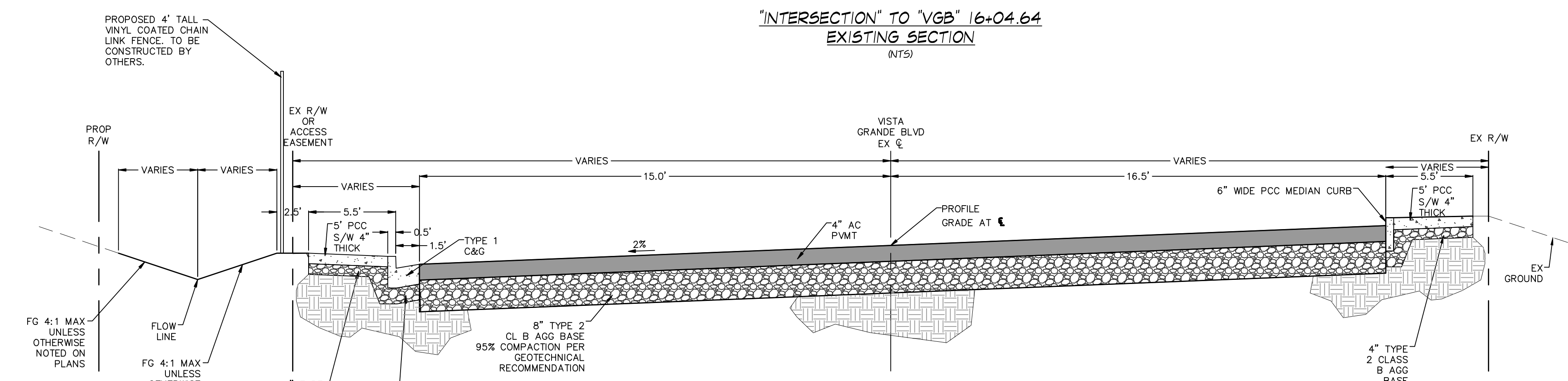
CARSON CITY
PUBLIC WORKS DEPARTMENT
 3505 BUTTI WAY CARSON CITY, NEVADA 89701
 PH: 887-2355 FAX: 887-2112
Manhard CONSULTING LTD.
 3476 Praterline Parkway, Suite 12 Carson City, NV 89706
 PH: (775) 882-5650

PROJ. MGR.: RCB
 PROJ. ASSOC.: CTF
 CHECKED BY: RCB
 DWG NO.: CCCCN15
 SCALE (HORIZ): 1" = 20'
 SCALE (VERT):
 PLOT DATE: JAN 2014

FOR BIDDING PURPOSES ONLY

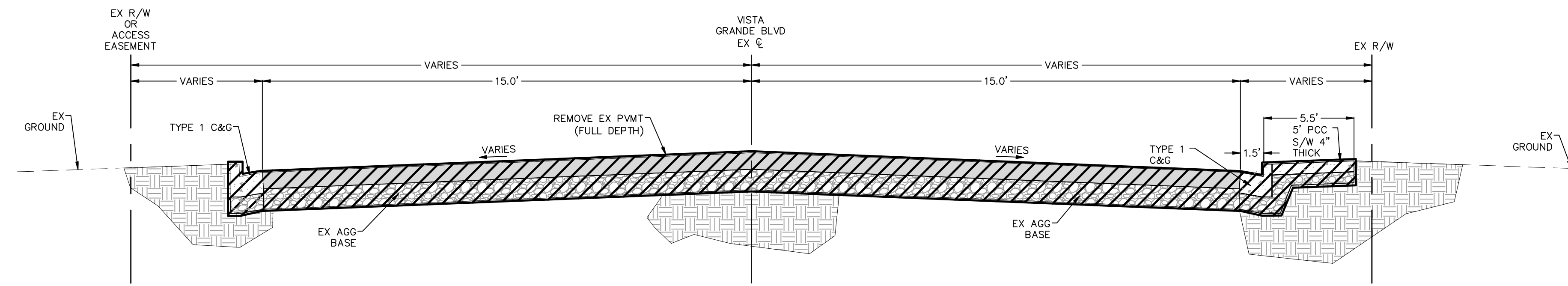


"INTERSECTION" TO "VGB" 16+04.64
EXISTING SECTION
(NTS)



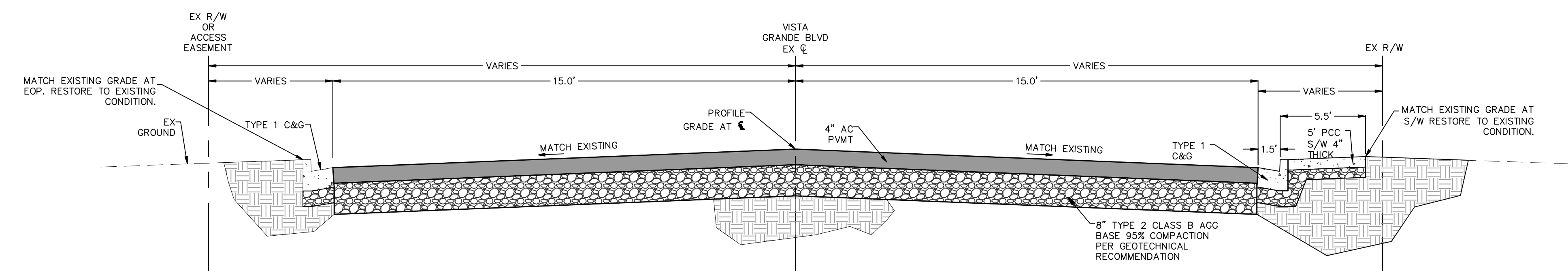
"INTERSECTION" TO "VGB" 16+04.64
IMPROVEMENT SECTION
(NTS)

NOTE:
SEE PLAN VIEW FOR SIDEWALK AND DITCH LOCATIONS.
6" CURB ON WEST SIDE OF ROAD BEGINS AT 14+91



"VGB" 17+20.00 TO "VGB" 18+18.64
EXISTING SECTION
(NTS)

NOTE:
SEE PLAN VIEW FOR LOCATION OF EXISTING
SIDEWALK AND CURB AND GUTTER



"VGB" 17+20.00 TO "VGB" 18+18.64
IMPROVEMENT SECTION
(NTS)

NOTE:
SEE PLAN VIEW FOR LOCATION OF SIDEWALK
AND CURB AND GUTTER

NOTES

1. BITUMINOUS MATERIAL WILL BE PG 64-28 NV UNLESS APPROVED OTHERWISE BY ENGINEER.
2. BITUMINOUS MATERIAL AGGREGATE SHALL BE TYPE 3 FOR ALL SURFACE COURSES
3. ALL CONCRETE EXPOSED TO FREEZE-THAW ENVIRONMENTS SHALL COMPLY WITH SECTION 202.12 OF THE STANDARD SPECIFICATIONS FOR PUBLIC WORKS CONSTRUCTION.
4. OFFSET DIMENSIONS SHOWN ON IMPROVEMENT SECTIONS DO NOT REFLECT PAVEMENT WIDTHS AT INTERSECTION RADIUS RETURNS, SEE PLAN.
5. ALL AC PATCHING SHALL COMPLY WITH CARSON CITY STANDARD DETAIL C-5.1.6.
6. SECTION FROM "VGB" 16+04.74 TO "VGB" 17+20.00 NOT SHOWN. THIS AREA IS IN TRANSITION FROM 2% CROSS SLOPE TO STANDARD CROWN SECTION.
7. SEE PLAN AND PROFILE SHEETS FOR CATCH POINTS AND FLOW LINE INFORMATION.
8. ALL PAVING SHALL BE NV 64-28, 2" TYPE 3 MIX OVER 2" TYPE 2 MIX TO BE USED.

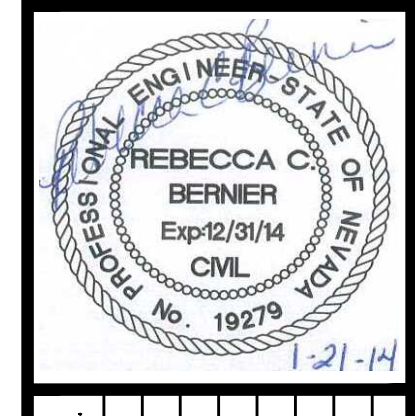
LEGEND

- INDICATES REMOVAL
- EX AC
- EX AGG BASE
- PROP AC
- PROP AGG BASE
- EX CONCRETE

REV.	DATE	DESCRIPTION	BY	APP.

RCB
PROJ. MGR.:
PROJ. ASSOC.:
CHECKED BY:
DWG NO.:
SCALE (HORIZ):
SCALE (VERT):
PILOT DATE:

CARSON CITY
PUBLIC WORKS DEPARTMENT
3505 BUTTE WAY CARSON CITY, NEVADA 89701
PH: 887-2355 FAX: 887-2112
Manhard
CONSULTING LTD
19475 Praterway, Suite 12
Carson City, NV 89706
PH: (775) 882-5650



REV.	DATE	DESCRIPTION	BY	APP.

COSTCO INTERTIE & VISTA GRANDE WATERLINE
PROJECT No: 04.1000
TYPICAL SECTION

SHEET
09
OF
28

FOR BIDDING PURPOSES ONLY

Date: 01/21/2014 11:29 Path: Name: P:\Projects\13\Water\TieIn\Drawings\PLAN SET\VISTA GRANDE\07 TYPICAL SECTION.dwg User: rcb