

FAIRGROUNDS ARENA PICNIC SHELTER

CARSON CITY FAIRGROUNDS

601 OLD CLEAR CREEK ROAD

APN NUMBER 009-303-03

BOARD OF SUPERVISORS

ROBERT L. CROWELL	MAYOR
KAREN ABOWD	SUPERVISOR
BRAD BONKOWSKI	SUPERVISOR
JOHN MCKENNA	SUPERVISOR
JIM SHIRK	SUPERVISOR
ALAN GLOVER	CITY CLERK

GENERAL NOTES

ALL WORK SHALL CONFORM TO THE "STANDARD SPECIFICATIONS FOR PUBLIC WORKS CONSTRUCTION" (SSPWC) AND THE "STANDARD DETAILS FOR PUBLIC WORKS CONSTRUCTION" (SDPWC) AS ADOPTED BY CARSON CITY. THE CONTRACTOR SHALL OBTAIN A PERMIT FOR PUBLIC WORKS CONSTRUCTION FROM THE CARSON CITY PERMIT CENTER PRIOR TO THE START OF CONSTRUCTION.

ALL TRAFFIC CONTROL AND BARRICADING WITHIN THE CARSON CITY RIGHT-OF-WAY SHALL CONFORM TO SECTION 100.33, 332.04 AND 332.05 OF THE STANDARD SPECIFICATIONS, PART VI OF THE MANUAL ON UNIFORM TRAFFIC CONTROL DEVICES, LATEST EDITION, AND THE UNR T2 CENTER, TEMPORARY TRAFFIC CONTROL GUIDELINES LATEST EDITION. A TRAFFIC CONTROL PLAN MUST BE SUBMITTED AND APPROVED BY THE CARSON CITY ENGINEERING DIVISION PRIOR TO ANY STREET CLOSURES.

THE CONTRACTOR SHALL CALL UNDERGROUND SERVICE ALERT "CALL BEFORE YOU DIG" (811) OR (1-800-227-2600) AT LEAST TWO (2) WORKING DAYS PRIOR TO START OF CONSTRUCTION AND COMPLY WITH THE REQUIREMENTS OF NRS AND NAC 455 THROUGHOUT THE COURSE OF THE WORK. SEWER SERVICE LATERALS ARE NOT OWNED OR MARKED BY CARSON CITY.

THE CONTRACTOR SHALL CALL THE CARSON CITY ENGINEERING DIVISION (887-2300) TWO (2) WORKING DAYS PRIOR TO THE START OF CONSTRUCTION. THE CONTRACTOR SHALL CALL ONE (1) WORKING DAY PRIOR TO REQUIRED INSPECTIONS AND TESTING. THE REQUIRED INSPECTIONS AND TESTING ARE LISTED ON THE INSPECTION RECORD ISSUED WITH EACH PERMIT. THE CONTRACTOR MUST HAVE THE PERMIT NUMBER AND THE DESCRIPTION LISTED ON THE INSPECTION RECORD TO SCHEDULE REQUIRED INSPECTIONS AND TESTING. FOR CITY CONTRACTED PROJECTS, THE CONTRACTOR SHALL SCHEDULE INSPECTIONS PER THE CONTRACT DOCUMENTS.

FINAL INSPECTIONS WILL BE PERFORMED BY CARSON CITY ENGINEERING DIVISION ACCORDING TO THE CARSON CITY INSPECTIONS AND TESTING PROCEDURES. NOTE: THESE PROCEDURES REQUIRE SUBMITTAL OF RECORD DRAWING PRINTS BY THE CONTRACTOR AND 10 WORKING DAYS TO PREPARE A FINAL PUNCH LIST. ALL CONDITIONS OF THE FINAL INSPECTION MUST BE COMPLETED PRIOR TO FINAL ACCEPTANCE OR ANY APPROVAL OF A CERTIFICATE OF OCCUPANCY BY THE CARSON CITY ENGINEERING DIVISION.

MODIFICATIONS TO THE APPROVED PLANS REQUIRES REVIEW AND APPROVAL BY THE CARSON CITY ENGINEERING DIVISION. WORK PERFORMED WITHOUT WRITTEN APPROVAL BY CARSON CITY ENGINEERING WILL REQUIRE REMOVAL AT THE CONTRACTORS EXPENSE.

THE APPROVED PLAN, PERMIT AND INSPECTION RECORD MUST BE ON THE JOB SITE AT ALL TIMES.

PLAN APPROVAL FOR SEWER AND WATER CONSTRUCTION SHALL EXPIRE ONE YEAR FROM DATE OF APPROVAL UNLESS CONSTRUCTION HAS BEEN INITIATED. (CCMC 12.06.180F, 12.01.140D)

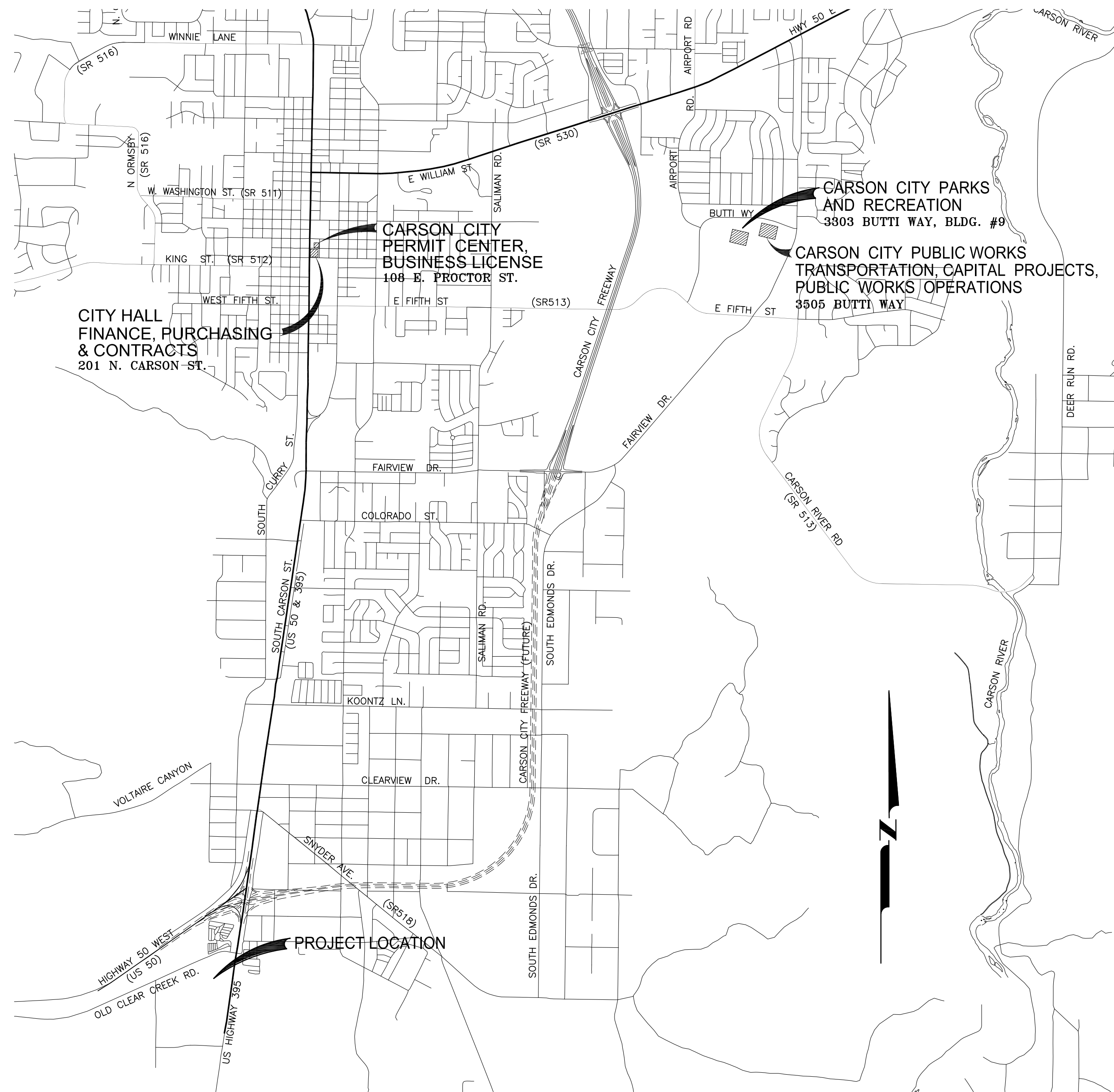
THE CONTRACTOR WILL BE SOLELY AND COMPLETELY RESPONSIBLE FOR ACQUIRING A STORMWATER DISCHARGE PERMIT FROM THE NEVADA DIVISION OF ENVIRONMENTAL PROTECTION (NDEP) INCLUDING DEVELOPING, SUBMITTING AND IMPLEMENTING A STORM WATER POLLUTION PREVENTION PLAN (SWPPP). THE CONTRACTOR SHALL DEVELOP, PLACE AND MAINTAIN STORM WATER PROTECTION DEVICES IN COMPLIANCE WITH THE NEVADA CONTRACTORS FIELD GUIDE FOR CONSTRUCTION SITE BEST MANAGEMENT PRACTICES (JUNE 2008).

THE LOCATION OF EXISTING UTILITIES SHOWN ON THESE DRAWINGS IS BASED ON THE BEST INFORMATION AVAILABLE TO THE ENGINEER. IT SHALL BE THE CONTRACTORS' RESPONSIBILITY TO VERIFY THESE LOCATIONS AT THE PROPOSED POINTS OF CONNECTIONS AND IN AREAS OF POSSIBLE CONFLICT WITH NEW UTILITY INSTALLATION, PRIOR TO BEGINNING CONSTRUCTION. POTHOLES IS REQUIRED. SHOULD THE CONTRACTOR FIND ANY DISCREPANCIES BETWEEN THE CONDITIONS EXISTING IN THE FIELD AND THE INFORMATION SHOWN ON THESE DRAWINGS, HE SHALL NOTIFY THE ENGINEER BEFORE PROCEEDING WITH CONSTRUCTION.

THE CONTRACTOR WILL BE SOLELY AND COMPLETELY RESPONSIBLE FOR THE CONDITIONS OF THE JOB SITE, INCLUDING SAFETY OF ALL PERSONS AND PROPERTY DURING PERFORMANCE OF THE WORK. THIS REQUIREMENT WILL APPLY CONTINUOUSLY AND NOT BE LIMITED TO NORMAL WORKING HOURS. THE CONTRACTOR SHALL BE RESPONSIBLE FOR THE DESIGN AND CONSTRUCTION OF PROPER SHORING OF TRENCHES IN ACCORDANCE WITH OCCUPATIONAL SAFETY LAWS. THE DUTIES OF THE ENGINEER DO NOT INCLUDE REVIEW OF THE ADEQUACY OF THE CONTRACTOR'S SAFETY IN, ON, OR NEAR THE CONSTRUCTION SITE.

SHOULD IT APPEAR THAT THE WORK TO BE DONE, OR ANY MATTER RELATIVE THERETO, IS NOT SUFFICIENTLY DETAILED OR EXPLAINED ON THESE PLANS, THE CONTRACTOR SHALL CONTACT THE ENGINEER FOR SUCH FURTHER EXPLANATIONS AS MAY BE NECESSARY.

ALL PVC WATER PIPELINES ARE TO BE DISINFECTED ACCORDING TO AWWA STANDARD C651 PER NAC 445A.67145 (6)(a) AND PRESSURE TESTED ACCORDING TO AWWA STANDARD C605 PER NAC 445A.67145 (7)(b).



VICINITY MAP

N.T.S.

DESIGNED FOR

CARSON CITY PARKS AND REC. DEPT.
3303 BUTTI WAY, BLDG. #9
CARSON CITY, NV 89701
(775) 887-2262

PROJECT MANAGER

DARREN ANDERSON, ASST. P.M.
CARSON CITY PUBLIC WORKS DEPT.
3505 BUTTI WAY
CARSON CITY, NV 89701
(775) 283-7584 FAX (775) 887-2112
danderson@carson.org

OWNER/DEVELOPER

VERN L. KRAHN, PARK PLANNER
CARSON CITY PARKS & REC. DEPT.
3303 BUTTI WAY, BLDG #9
CARSON CITY, NV 89701
(775) 887-2262 FAX (775) 887-2145

SHEET INDEX

TITLE SHEET	C1.0
SHEET INDEX	C2.0
DEMO PLAN	C3.0
SITE PLAN	C4.0
ACCESS RAMP AND CONCRETE FLATWORK	C5.0
ELEVATIONS	C6.0

APPROVED BY

CC DEVELOPMENT ENGINEERING _____ DATE _____

CC PARKS & RECREATION DEPARTMENT _____ DATE _____

APPLICANT NO. _____

DESIGNED BY: DA
DRAWN BY: DA
CHECKED BY: VK, TG, SF
DWG NO.: plaza landscaping, inc
SCALE (HORIZ): N/A
SCALE (VERT): N/A
PLOT DATE: 1/22/14

CARSON CITY
PUBLIC WORKS DEPARTMENT

3505 BUTTI WAY
CARSON CITY, NEVADA 89701
PH: 887-2355
FAX: 887-2112

REV	DATE	DESCRIPTION	BY	APP'D

FAIRGROUNDS ARENA PICNIC SHELTER
601 OLD CLEAR CREEK ROAD
TITLE SHEET

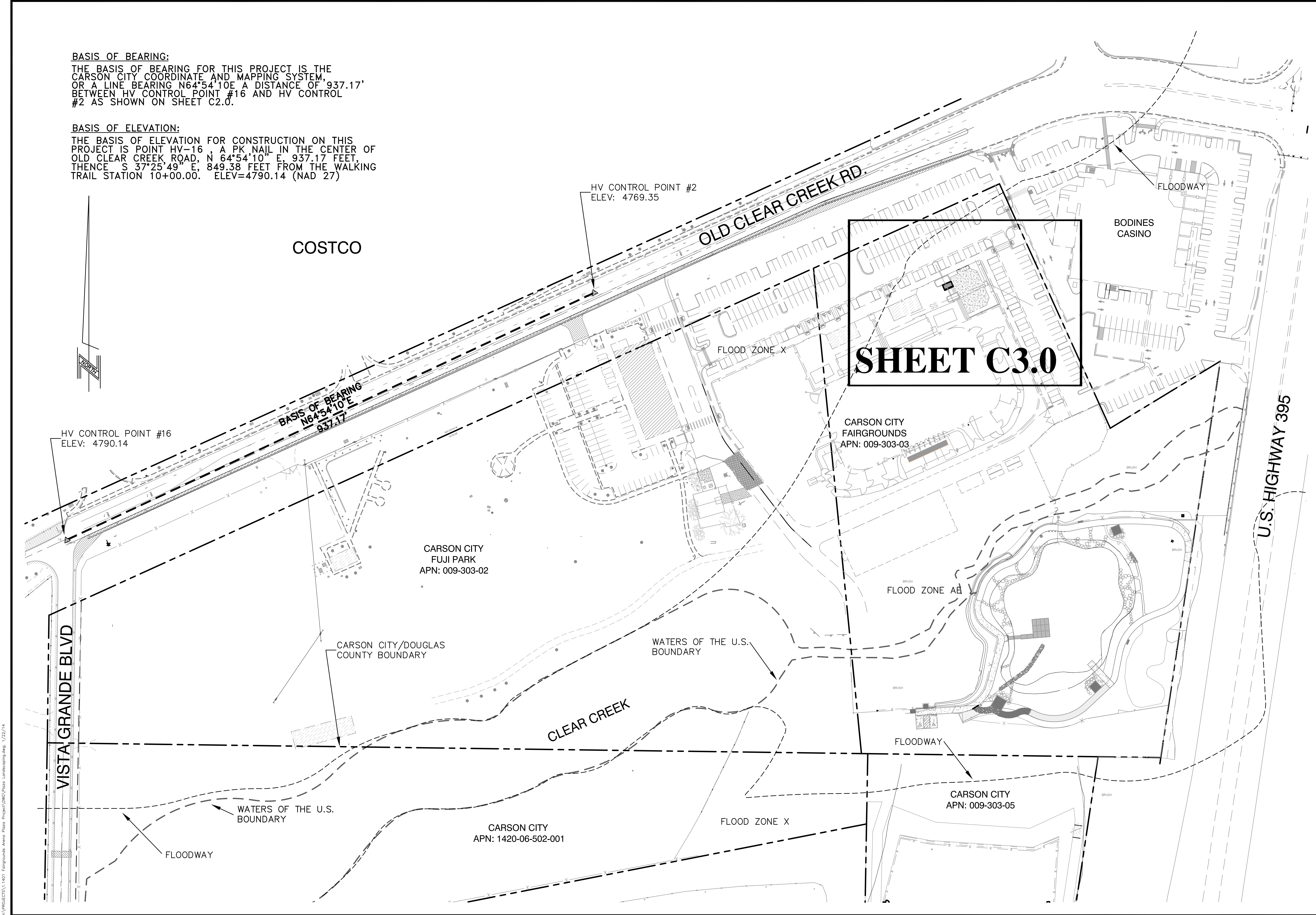
SHEET
C1.0

BASIS OF BEARING:

THE BASIS OF BEARING FOR THIS PROJECT IS THE CARSON CITY COORDINATE AND MAPPING SYSTEM, OR A LINE BEARING N64°54'10"E A DISTANCE OF 937.17' BETWEEN HV CONTROL POINT #16 AND HV CONTROL #2 AS SHOWN ON SHEET C2.0.

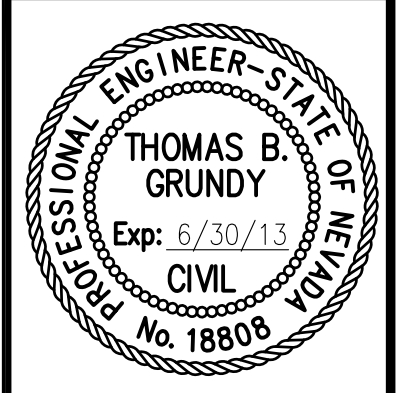
BASIS OF ELEVATION:

THE BASIS OF ELEVATION FOR CONSTRUCTION ON THIS PROJECT IS POINT HV-16, A PK NAIL IN THE CENTER OF OLD CLEAR CREEK ROAD, N 64°54'10" E, 937.17 FEET, THENCE S 37°25'49" E, 849.38 FEET FROM THE WALKING TRAIL STATION 10+00.00. ELEV=4790.14 (NAD 27)



DESIGNED BY: DA
 DRAWN BY: DA
 CHECKED BY: VK, TG, SF
 DWG NO.: plaza_landscaping.swg
 SCALE (HORIZ): 1" = 70'
 SCALE (VERT): N/A
 PLOT DATE: 1/22/14

**CARSON CITY
 PUBLIC WORKS DEPARTMENT**
 3505 BUTTI WAY CARSON CITY, NEVADA 89701
 PH: 887-2355 FAX: 887-2112



REV	DATE	DESCRIPTION	BY	APP'D

**FAIRGROUNDS ARENA PICNIC SHELTER
 601 OLD CLEAR CREEK RD.
 SHEET INDEX**

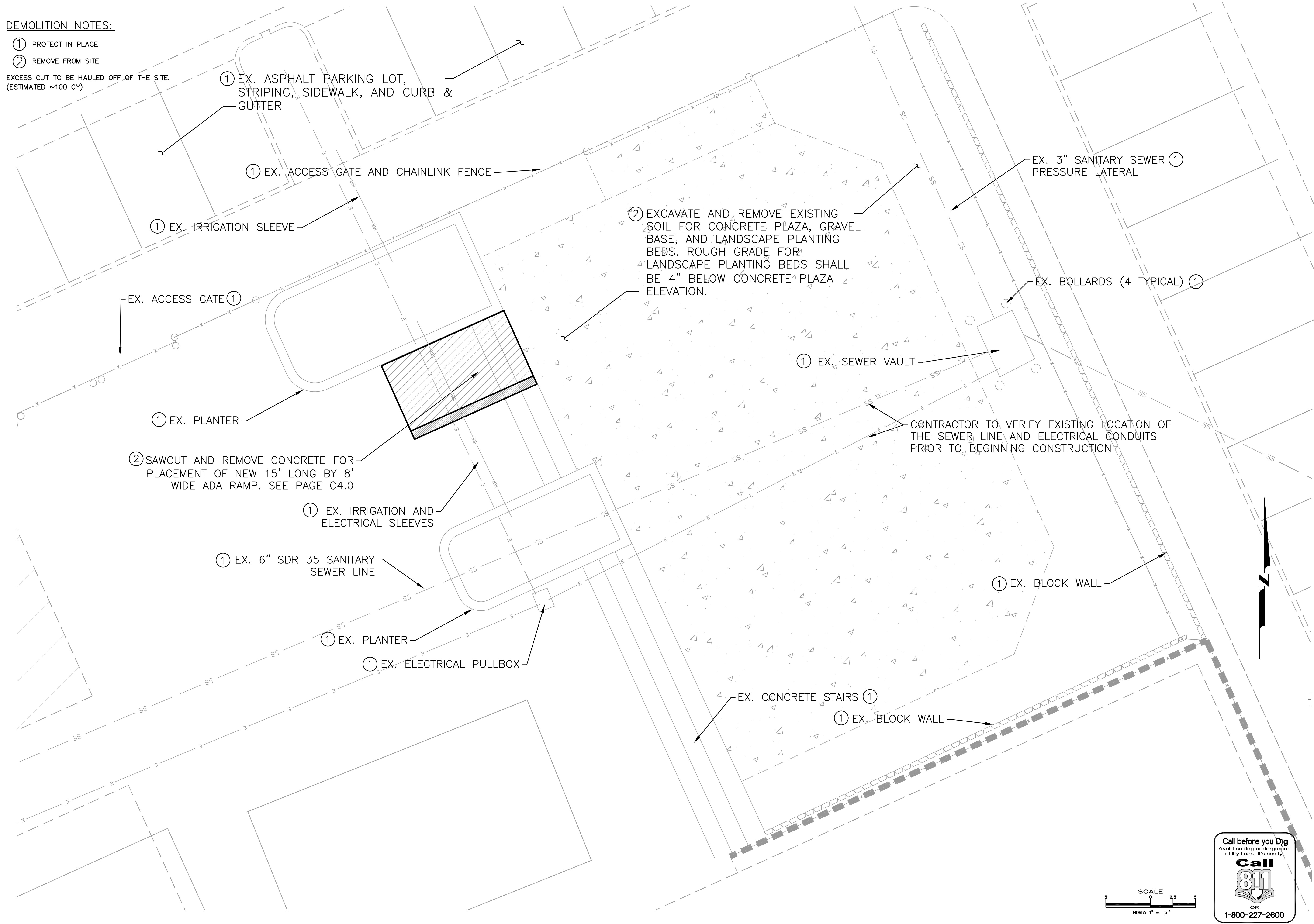
SHEET
C2.0

H:\PROJECTS\11401_Fairgrounds_Arena_Picnic_Shelter\Drawings\Index.dwg: 1/22/14

DEMOLITION NOTES:

- ① PROTECT IN PLACE
- ② REMOVE FROM SITE

EXCESS CUT TO BE HAULED OFF OF THE SITE.
(ESTIMATED ~100 CY)



① EX. ASPHALT PARKING LOT, STRIPING, SIDEWALK, AND CURB & GUTTER

① EX. ACCESS GATE AND CHAINLINK FENCE

① EX. IRRIGATION SLEEVE

EX. ACCESS GATE ①

① EX. PLANTER

② SAWCUT AND REMOVE CONCRETE FOR PLACEMENT OF NEW 15' LONG BY 8' WIDE ADA RAMP. SEE PAGE C4.0

① EX. IRRIGATION AND ELECTRICAL SLEEVES

① EX. 6" SDR 35 SANITARY SEWER LINE

① EX. PLANTER

① EX. ELECTRICAL PULLBOX

② EXCAVATE AND REMOVE EXISTING SOIL FOR CONCRETE PLAZA, GRAVEL BASE, AND LANDSCAPE PLANTING BEDS. ROUGH GRADE FOR LANDSCAPE PLANTING BEDS SHALL BE 4" BELOW CONCRETE PLAZA ELEVATION.

① EX. SEWER VAULT

CONTRACTOR TO VERIFY EXISTING LOCATION OF THE SEWER LINE AND ELECTRICAL CONDUITS PRIOR TO BEGINNING CONSTRUCTION

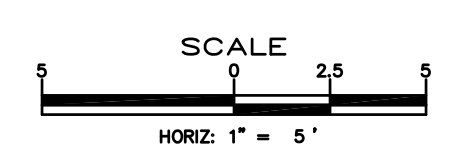
EX. 3" SANITARY SEWER ① PRESSURE LATERAL

EX. BOLLARDS (4 TYPICAL) ①

① EX. BLOCK WALL

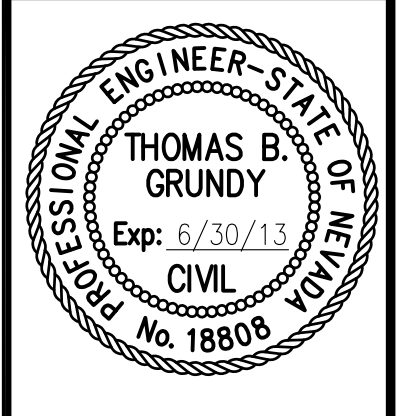
EX. CONCRETE STAIRS ①

① EX. BLOCK WALL



DESIGNED BY: DA
DRAWN BY: DA
CHECKED BY: VK, TG, SF
DWG NO.: plaza landscaping.dwg
SCALE (HORIZ): 1" = 5'
SCALE (VERT): N/A
PLOT DATE: 1/22/14

**CARSON CITY
PUBLIC WORKS DEPARTMENT**
3505 BUTTI WAY CARSON CITY, NEVADA 89701
PH: 887-2355 FAX: 887-2112

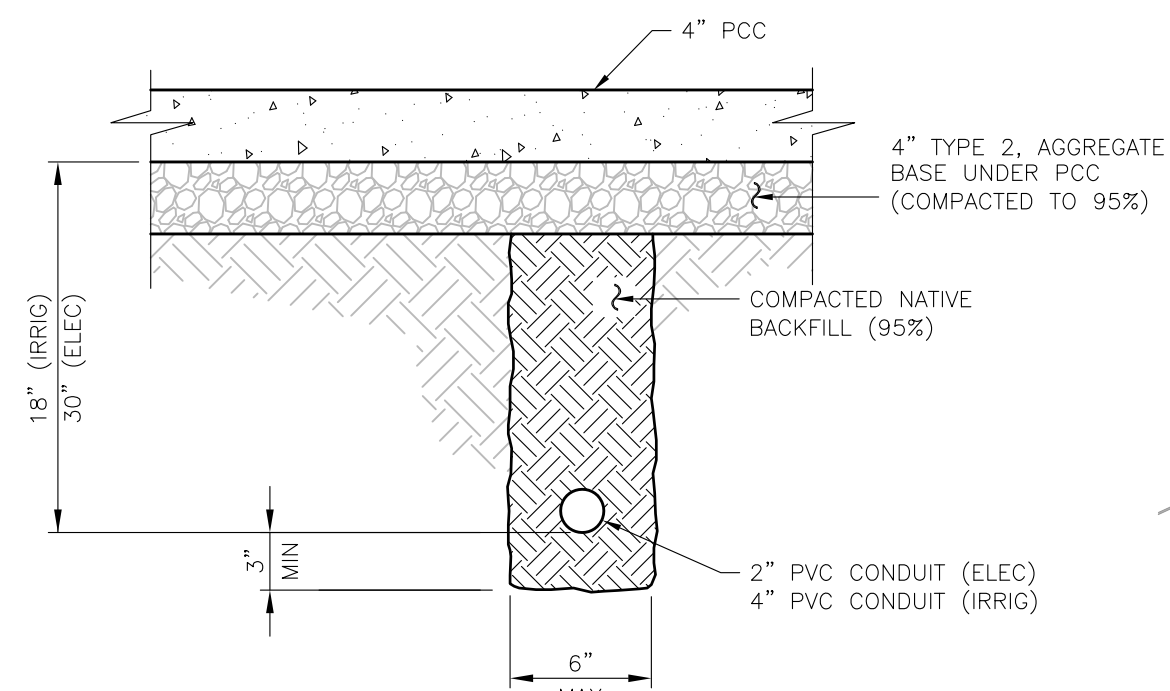


REV	DATE	DESCRIPTION	BY	APP'D

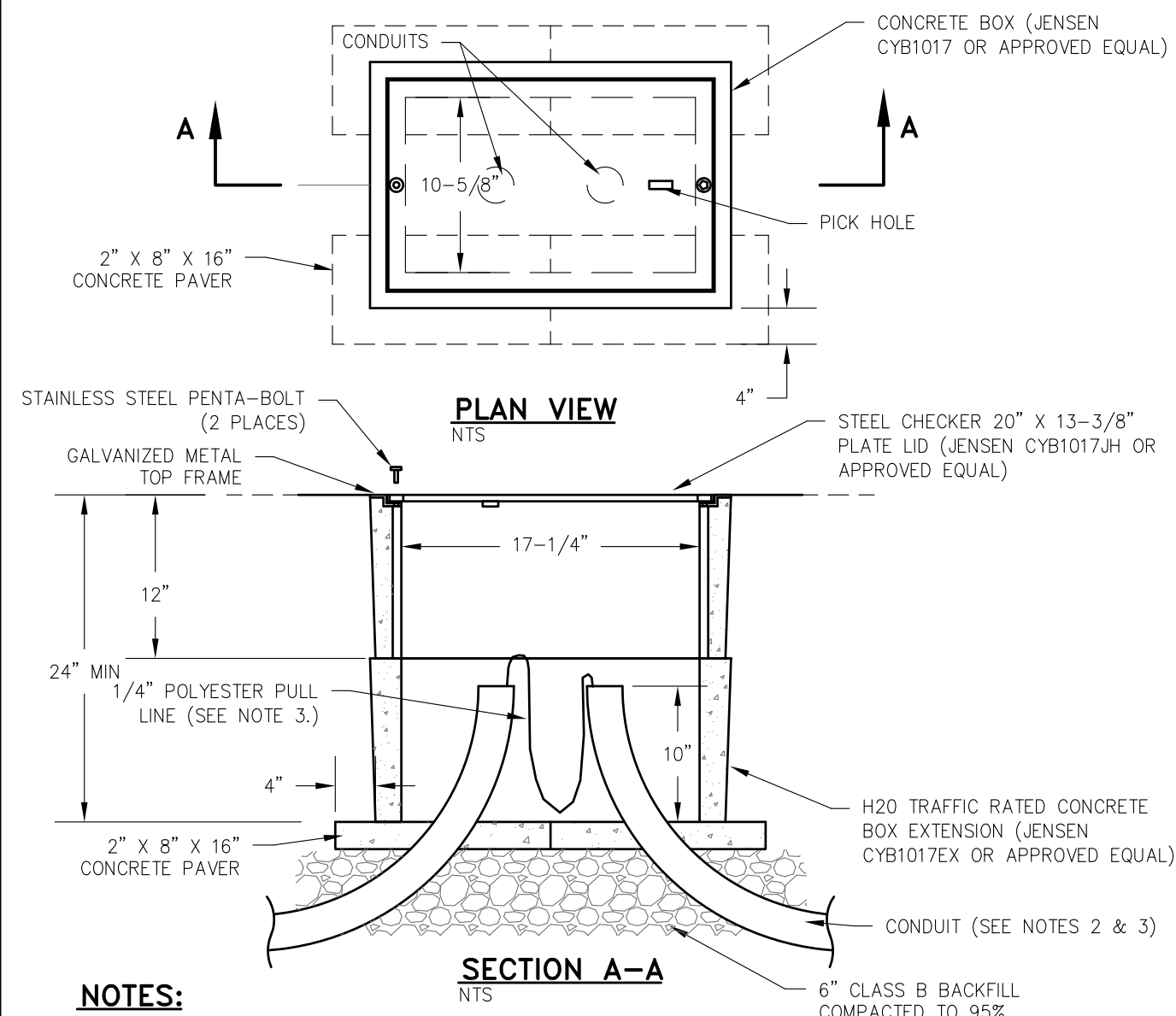
**FAIRGROUNDS ARENA PICNIC SHELTER
601 OLD CLEAR CREEK RD.
DEMO PLAN**

SHEET
C3.0

- NOTES:
1. CONTRACTOR SHALL FIELD VERIFY ALL EXISTING GRADES AND ELEVATIONS AND ADVISE THE CITY'S PROJECT MANAGER OF ANY CONFLICTS.
 2. CONTRACTOR SHALL INSTALL PULL STRINGS IN ALL NEW ELECTRICAL AND IRRIGATION SLEEVES.
 3. ALL ELECTRICAL CONDUIT TO BE SCHEDULE 40 PVC.
 4. CONTRACTOR TO DUCT TAPE CLOSE ALL ENDS OF IRRIGATION SLEEVES.

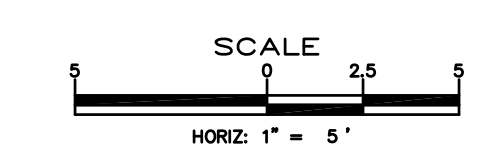
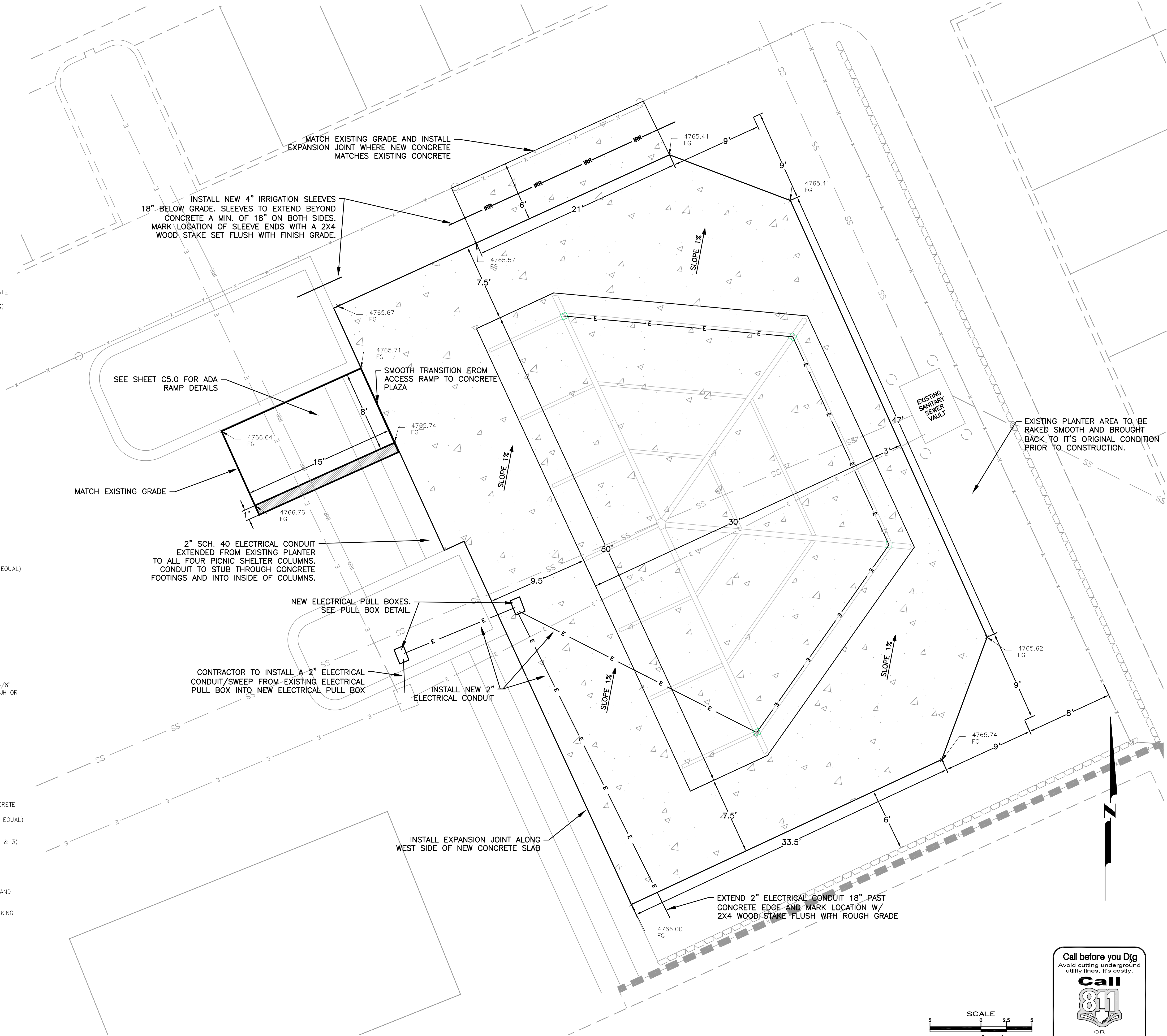


TYPICAL CONDUIT TRENCH
NOT TO SCALE



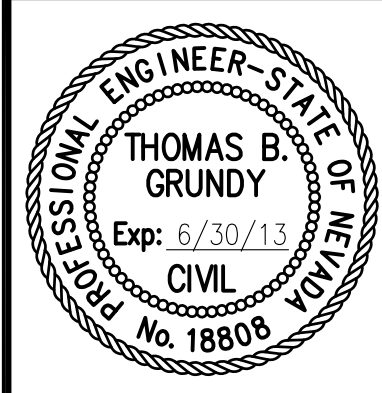
- NOTES:
1. PULL BOXES AND COVERS SHALL BE H-20 TRAFFIC RATED.
 2. CONDUIT SHALL BE SCHEDULE 40 AND CONDUIT ENTERING A PULLBOX SHALL BE TERMINATED WITH A SWEEP AND CAPPED WITH AN END BELL.
 3. CONDUITS SHALL HAVE 1/4" POLYESTER PULL LINE WITH SEQUENTIAL FOOTAGE MARKINGS AND A MINIMUM BREAKING STRENGTH OF 400 POUND PULL LINE SHALL EXTEND A MINIMUM OF 3 FEET FROM EACH HANDHOLE.
 4. A 6 INCH CLEARANCE SHALL BE MAINTAINED FROM THE PULLBOX LIDS AND THE CONDUCTORS COILED IN THE PULL BOXES.

ELECTRICAL PULL BOX DETAIL
NOT TO SCALE



DESIGNED BY: DA
 DRAWN BY: DA
 CHECKED BY: VK, TG, SF
 DWG NO.: plaza_landscaping.dwg
 SCALE (HORIZ): 1" = 5'
 SCALE (VERT): N/A
 PLOT DATE: 1/22/14

CARSON CITY PUBLIC WORKS DEPARTMENT
 3505 BUTTI WAY CARSON CITY, NEVADA 89701
 PH: 887-2355 FAX: 887-2112

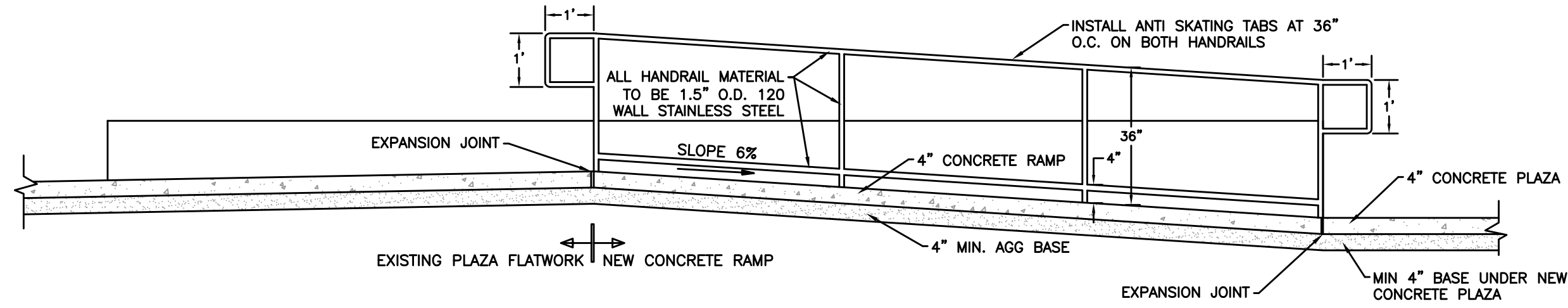


REV	DATE	DESCRIPTION	BY	APP'D

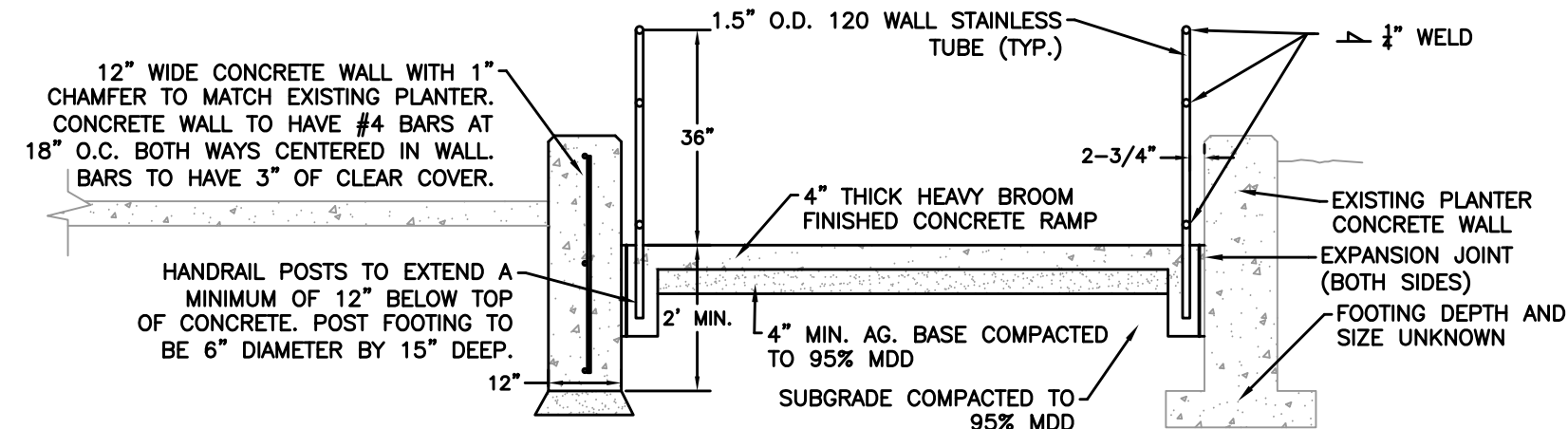
**FAIRGROUNDS ARENA PICNIC SHELTER
 601 OLD CLEAR CREEK RD.
 SITE PLAN**

SHEET
C4.0

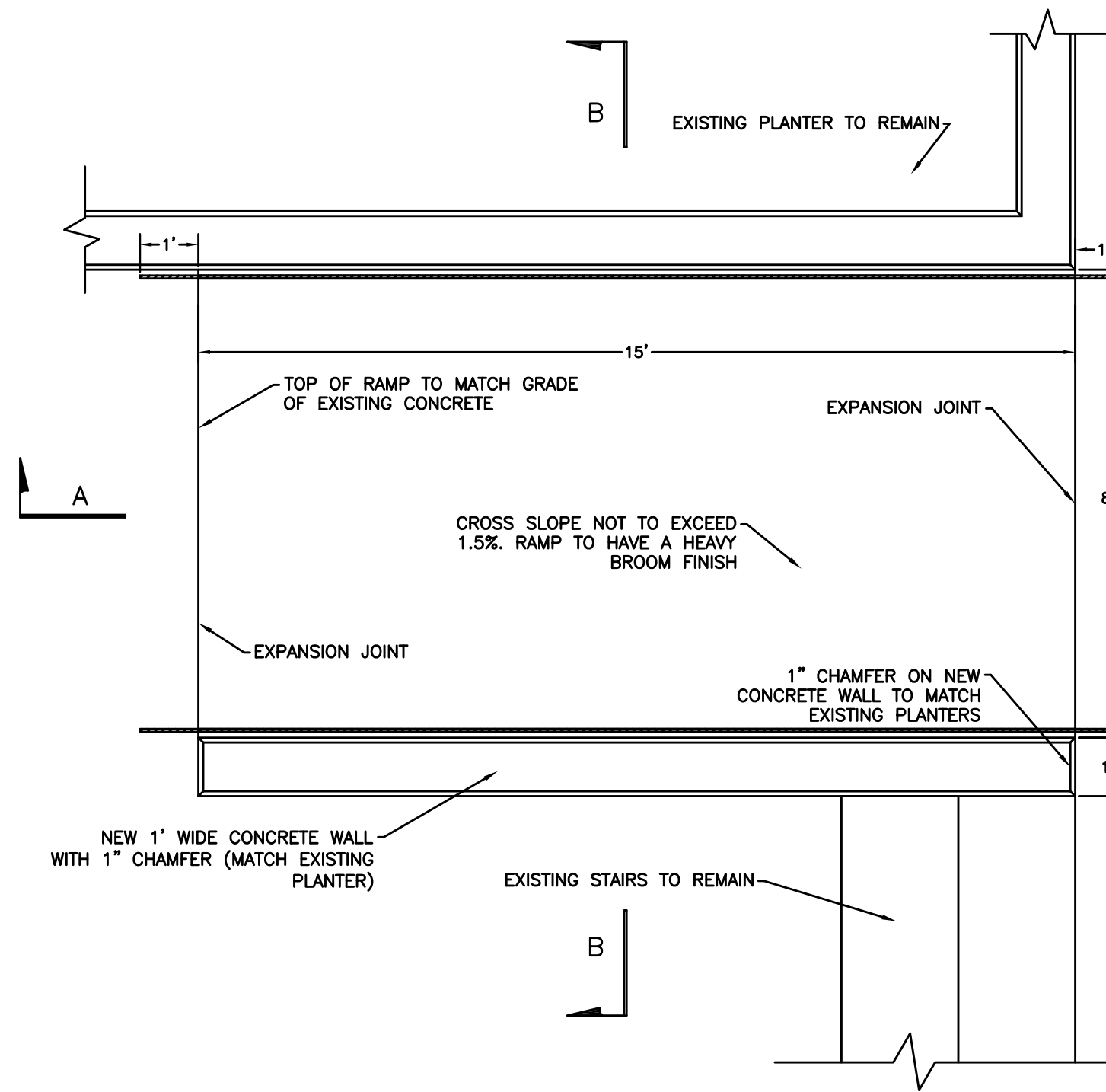
H:\PROJECTS\11401 Fairgrounds Arena Picnic Shelter\DWG\Plaza Landscaping.dwg: 1/22/14



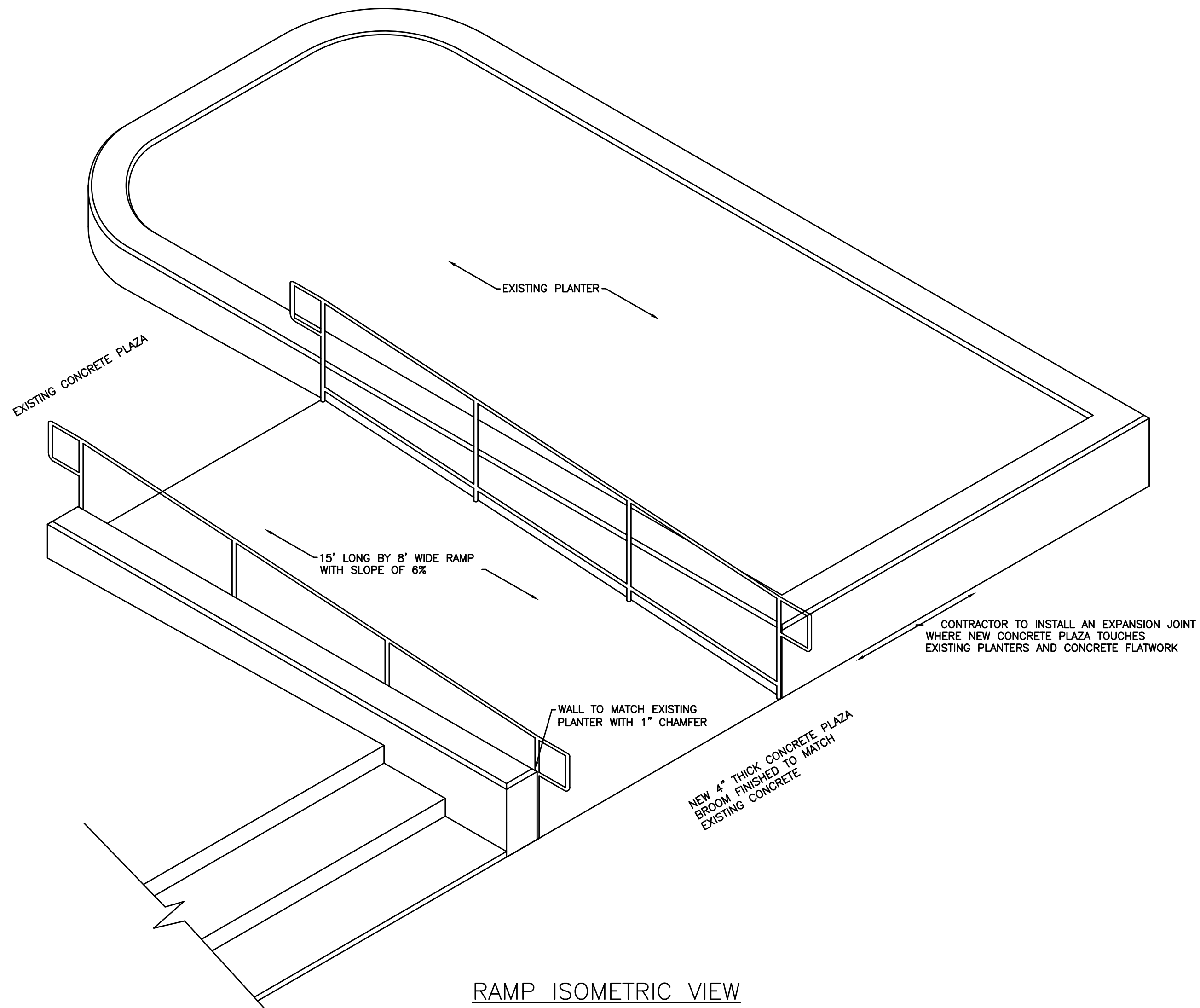
SECTION A-A



SECTION B-B



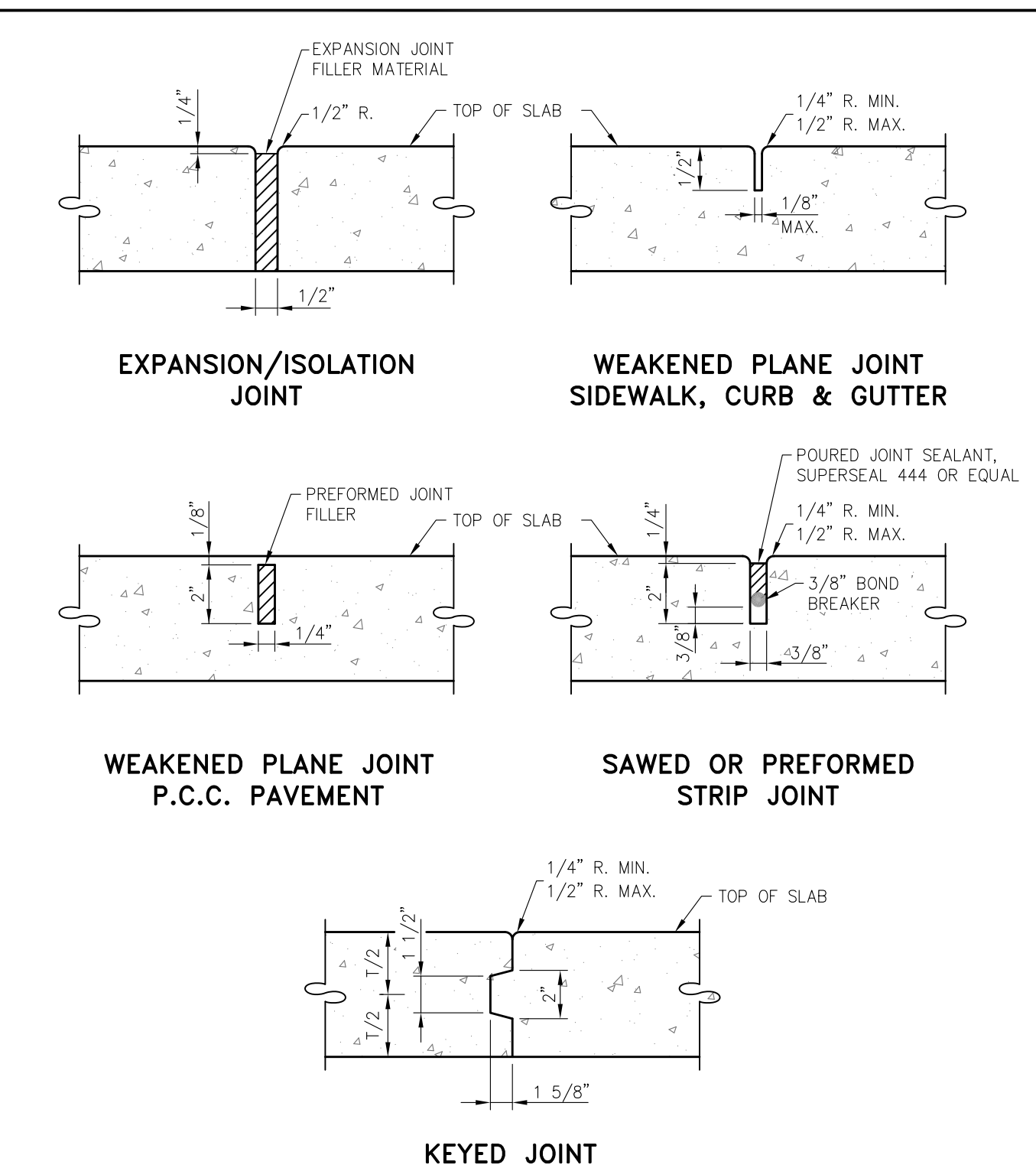
RAMP TOP VIEW



RAMP ISOMETRIC VIEW

NOTES:

1. PORTLAND CEMENT CONCRETE (PCC) FOR BUILDING FLOOR SHALL HAVE THE FOLLOWING CHARACTERISTICS; MASTERFIBER MAC MATRIX MACRO FIBERS OR APPROVED EQUAL (AT A MINIMUM OF 3 POUNDS PER CUBIC YARD), 4000 PSI MINIMUM COMPRESSIVE STRENGTH AT 28 DAYS, MINIMUM 6 SACKS OF CEMENT PER CUBIC YARD, W/MAXIMUM WATER-CEMENT RATIO OF 0.45, AIR ENTRAINMENT 6%+/-1.5%, SLUMP 1-4 INCHES. ALL MATERIALS SHALL CONFORM TO SECTION 202 OF THE STANDARD SPECIFICATIONS FOR PUBLIC WORKS CONSTRUCTION FOR CONCRETE EXPOSED TO FREEZE THAW ENVIRONMENTS.
2. EXISTING CONCRETE SHALL BE REMOVED TO A NEAT SAWCUT LINE OR NEAREST EXPANSION JOINT.
3. ALL AGGREGATE BASE SHALL BE TYPE 2, CLASS B AND SHALL CONFORM TO SEC.200.01. OF THE STANDARD SPECIFICATIONS FOR PUBLIC WORKS CONSTRUCTION (SSPWC).
4. NEW CONCRETE RAMP SHALL HAVE A HEAVY BROOM FINISH.
5. BASE AND SUBGRADE TO BE COMPACTED 95% MDD
6. STEEL IN NEW CONCRETE WALL TO BE 60 KSI #4 REBAR
7. NEW CONCRETE PLAZA TO HAVE CONTROL JOINTS BOTH DIRECTIONS AND SPACED NO FURTHER THAN 8' APART (MATCH EXISTING CONTROL JOINT PATTERN.) PLAZA CONCRETE TO HAVE A LIGHT BROOM FINISH.



NOTES:

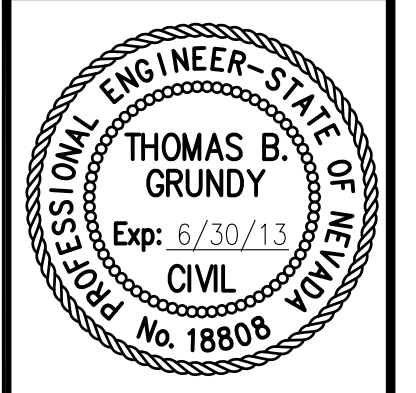
1. ALL CONCRETE EDGING AND JOINTING SHALL CONFORM TO SECTION 312.09 OF THE STANDARD SPECIFICATIONS FOR PUBLIC WORKS CONSTRUCTION (SSPWC).

NO.	REVISION	DATE	STANDARD DETAIL FOR PUBLIC WORKS CONSTRUCTION	SECTION
				CARSON CITY
				DRAWING NO.
				C-5.1.1 (312)
				DATE
				7/2009

P.C.C. JOINTING DETAILS

DESIGNED BY: DA
 DRAWN BY: DA
 CHECKED BY: VK, TG, SE
 DWG NO.: plaza_landscaping.dwg
 SCALE (HORIZ): N/A
 SCALE (VERT): N/A
 PLOT DATE: 1/22/14

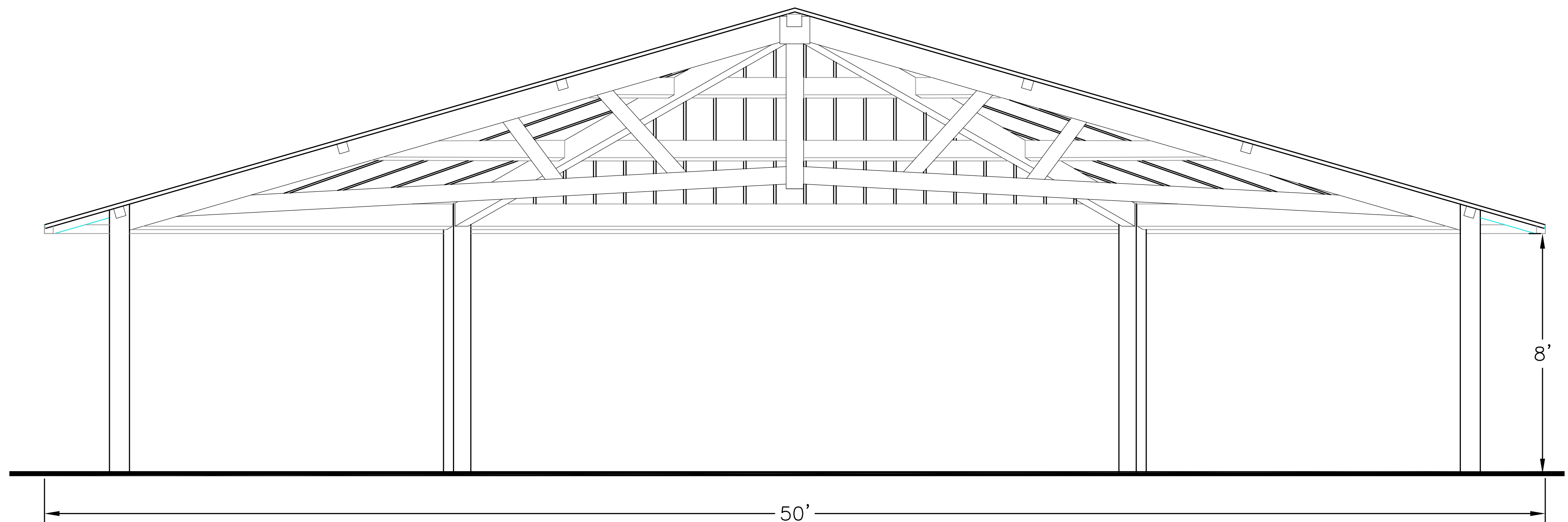
**CARSON CITY
 PUBLIC WORKS DEPARTMENT**
 3505 BUTTI WAY CARSON CITY, NEVADA 89701
 PH: 887-2355 FAX: 887-2112



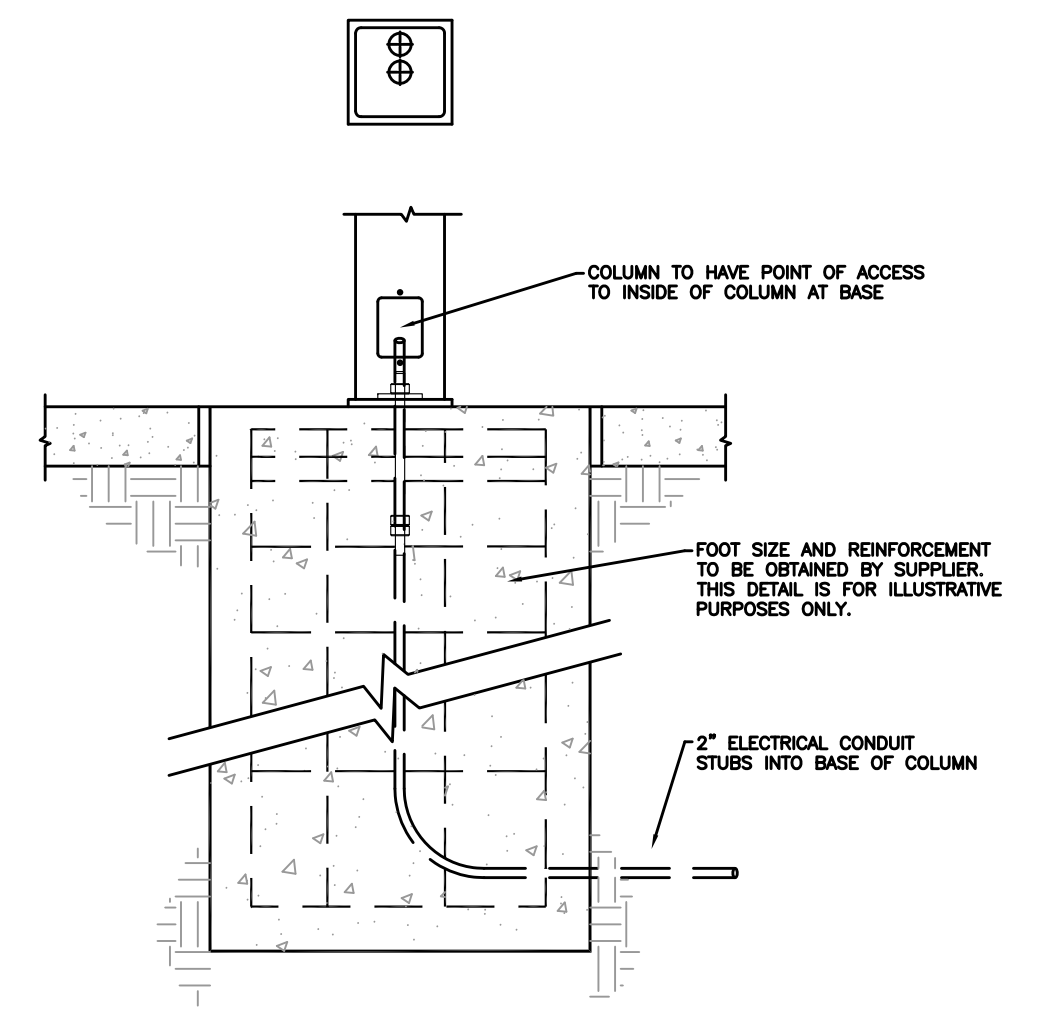
REV.	DATE	DESCRIPTION	BY	APP'D

**FAIRGROUNDS ARENA PICNIC SHELTER
 601 OLD CLEAR CREEK RD.
 ACCESS RAMP AND CONCRETE FLATWORK**

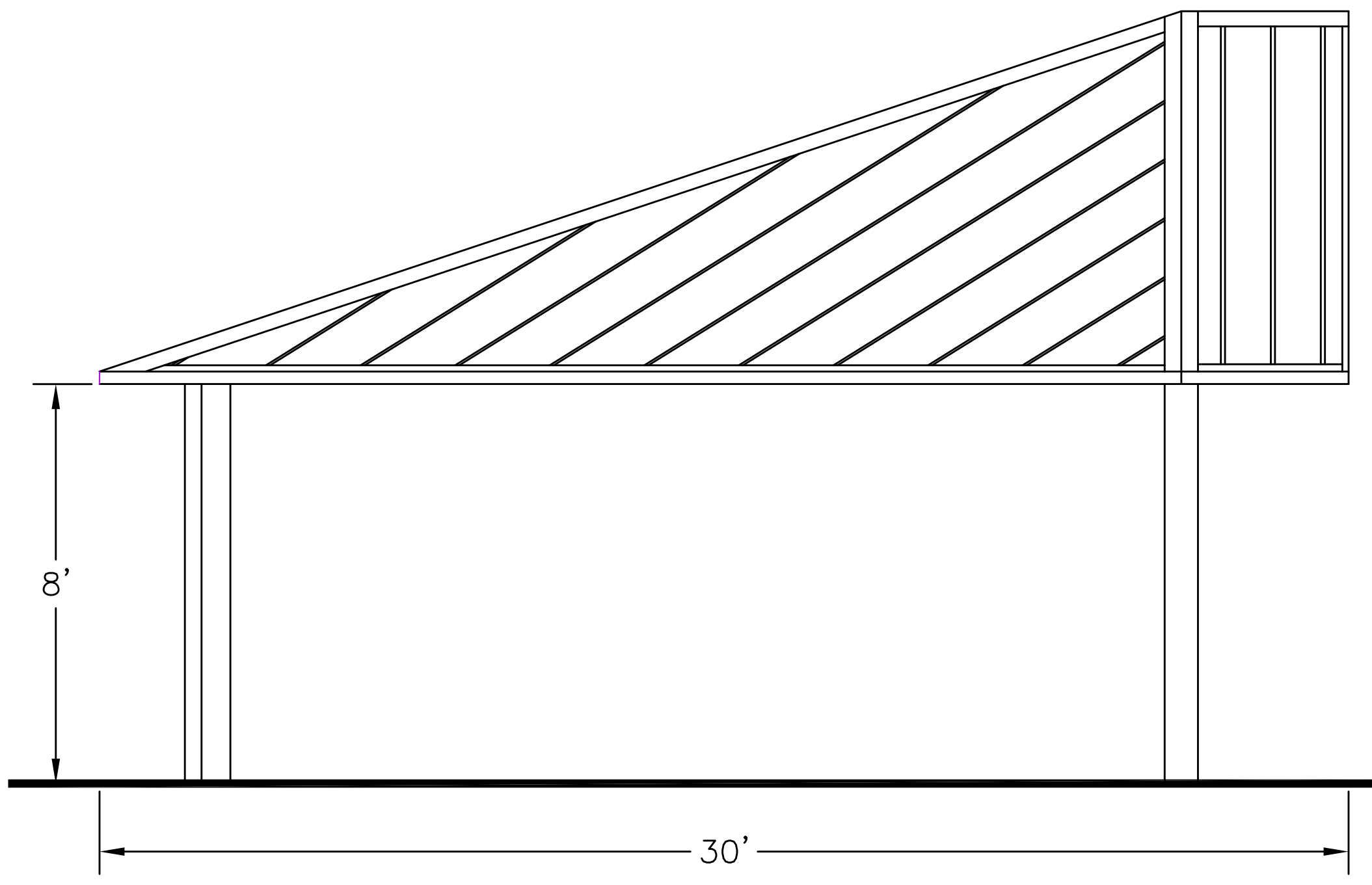
SHEET
C5.0



FRONT VIEW



COLUMN DETAIL



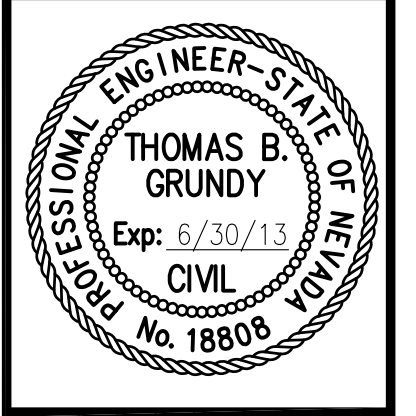
SIDE VIEW

- PICNIC SHELTER NOTES:**
- FINAL PICNIC SHELTER LOCATION TO BE APPROVED BY THE CONSTRUCTION MANAGER.
 - THE PICNIC SHELTER IS TO BE A VIENNA MODEL HALF HEXAGON SHELTER BY CLASSIC RECREATIONS OR APPROVED EQUAL.
 - PICNIC SHELTER DETAILS ARE PROVIDED FOR ILLUSTRATIVE PURPOSES ONLY. CONTRACTOR SHALL OBTAIN ENGINEERED STAMPED PLANS AND DETAILS FROM THE MANUFACTURER AND PREPARE PAPERWORK AND DRAWINGS FOR A NO COST BUILDING PERMIT. DRAWINGS TO BE STAMPED BY A NEVADA LICENSED ENGINEER.
 - THE PICNIC SHELTER IS TO BE 50' WIDE BY 30' LONG WITH AN EAVE HEIGHT OF 8' AND A ROOF PITCH OF 4:12.
 - PICNIC SHELTER'S ROOF IS TO MATCH THE NEARBY RESTROOM'S METAL ROOF JUST TO THE EAST OF THE PROJECT LOCATION. ALL PICNIC SHELTER ROOF AND POLE/BEAM COLORS TO BE SELECTED AND APPROVED BY THE CITY'S PROJECT CONSTRUCTION MANAGER.

- DESIGN CRITERIA:**
- GROUND SNOW LOAD: 30 PSF
 - DRIFT LOAD DESIGN IN THE 30 PSF ZONES MAY UTILIZE ASCE 7-10 TABLE C7-1 GROUND SNOW VALUES
 - THE FINAL ROOF DESIGN LOADS SHALL NOT BE LESS THAN 20 PSF AFTER ALL REDUCTIONS ARE FACTORED
 - WIND SPEED: 126 MPH (3-GUST), WITH EXPOSURE DEFAULTING TO "C" PER ASCE 7-10
 - SEISMIC DESIGN CATEGORY: "E" (UNLESS A SITE SPECIFIC ANALYSES IS PERFORMED AND APPROVED.)
 - FROST DEPTH: 24" MINIMUM
 - WINTER DESIGN TEMPERATURE: 10 DEG. F.
 - AIR FREEZING INDEX: 500
 - MEAN ANNUAL TEMPERATURE: 50

DESIGNED BY: DA
 DRAWN BY: DA
 CHECKED BY: VK, TG, SF
 DWG NO.: plaza_landscaping.dwg
 SCALE (HORIZ): N/A
 SCALE (VERT): N/A
 PLOT DATE: 1/22/14

**CARSON CITY
 PUBLIC WORKS DEPARTMENT**
 3505 BUTTI WAY CARSON CITY, NEVADA 89701
 PH: 887-2355 FAX: 887-2112



REV	DATE	DESCRIPTION	BY	APP'D

**FAIRGROUNDS ARENA PICNIC SHELTER
 601 OLD CLEAR CREEK RD.
 ELEVATIONS**

SHEET
06.0