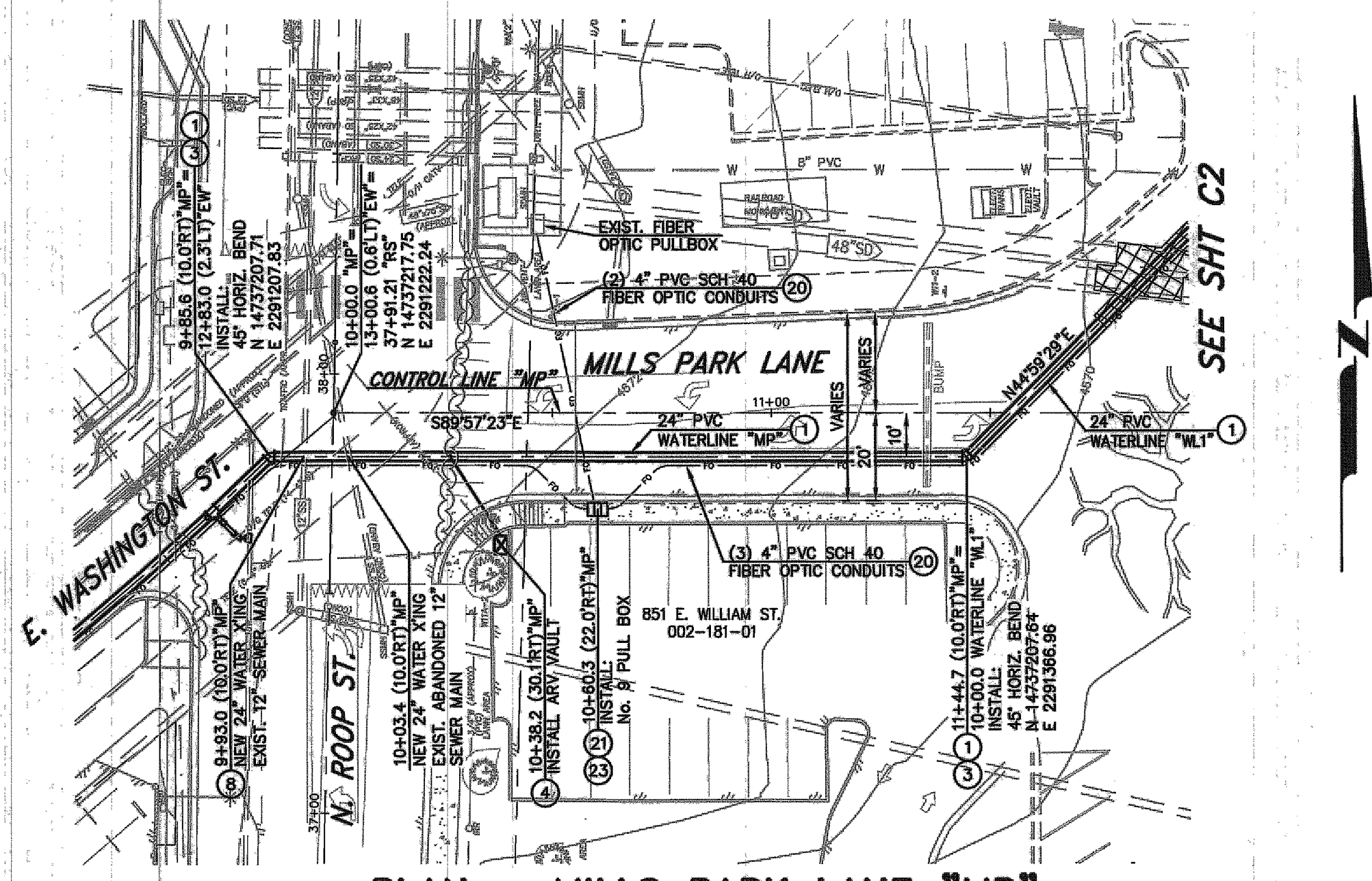


**PLAN - E. WASHINGTON ST. "EW"**  
SCALE: 1" = 30'  
REFERENCE SHEETS C8 TO C11 FOR SURFACE IMPROVEMENTS



**PLAN - MILLS PARK LANE "MP"**  
SCALE: 1" = 30'

**LEGEND:**

AREAS OF SPECIAL CONSTRUCTION PER WATER/SEWER SEPARATION GUIDELINES & SPECIAL CONSTRUCTION/VERTICAL CROSSING CONFLICTS NOTES.

**CONSTRUCTION NOTES:**

- 1 INSTALL PVC C905, DR-25, 165 PSI BELL & SPIGOT OR FUSIBLE PVC WATER MAIN (WHERE INDICATED ON PLAN) PER MODIFIED STD DRAWING C-1.2.1. JOINT RESTRAINTS FOR PVC PIPE SHALL BE USED ON ALL FITTINGS, AND AT SPECIFIC LOCATIONS WHERE IDENTIFIED ON THE PLAN. INSTALLATION PER MANUFACTURER'S RECOMMENDATIONS.
- 2 INSTALL 24" BUTTERFLY VALVE PER DETAIL 1, SHEET C14, WITH NUT EXTENDER TO EXTEND TOP OF NUT TO BETWEEN 18" TO 24" FROM TOP OF VALVE BOX.
- 3 INSTALL LINE LOCATION BOX & LID PER STD DRAWINGS C-1.2.2. & C-1.2.3, AT ALL HORIZONTAL BEND LOCATIONS, UNLESS A WATER VALVE BOX IS AT SAME LOCATION.
- 4 INSTALL 2" POTABLE WATER AIR RELEASE VALVE PER STD. DRAWING C-3.1.10.
- 5 INSTALL PERMANENT FLUSH ASSEMBLY PER STD. DRAWING C-3.1.12.
- 7 POTHOLE TO VERIFY EXACT DEPTH AND/OR MAKE & MATERIALS.
- 8 PROTECT-IN-PLACE
- 10 WATER MAIN CROSSING EXISTING UTILITY PER STD DRAWINGS C-3.1.8 & C3.1.9
- 12 INSTALL JOINT RESTRAINTS FOR USE WITH C-905 PVC PIPE TO LIMITS SHOWN ON PLANS, PER MANUFACTURER'S RECOMMENDATIONS. FUSIBLE C-905 PVC PIPE MAY BE USED IN LIEU OF RESTRAINED JOINTS.
- 14 INSTALL TAPPING SLEEVE, PER STD. DRAWING C-3.1.3, WITH GATE VALVE PER STD. DRAWING C-3.1.4.
- 15 LIMITS OF FULL DEPTH SAWCUT AND REMOVAL OF EXISTING AC PAVEMENT.
- 16 CONSTRUCT PERMANENT PAVEMENT PATCH PER STD DRAWING C-5.1.6
- 20 INSTALL 4" DIAMETER, SCH 40, PVC CONDUITS WITH PULL ROPE, PER MODIFIED STD DWG C-1.2.1, LARGE RADIUS (36" MIN.) SWEEPS ONLY, ENCASED WITH 6" (INCHES) CONCRETE, WHERE REQUIRED.
- 21 INSTALL No. 9 PULL BOX WITH TRAFFIC RATED, BOLT DOWN, STEEL COVER MARKED "FIBER OPTIC" PER DETAIL 7, SHEET C15.
- 23 REMOVE AND REPLACE EXISTING CURB, GUTTER & SIDEWALK AS REQUIRED FOR PULL BOX INSTALLATION, SET PULLBOX FLUSH WITH ADJACENT WALKWAY.

**WATER NOTES:**

- PER NAC 445A.67145 (6), WATER MAIN MUST NOT BE PLACED INTO SERVICE UNTIL:
1. THE WATER MAIN HAS BEEN DISINFECTED IN ACCORDANCE WITH ANWA STANDARD C651.
  2. THE DISPOSAL OF ANY SPENT CHLORINE SOLUTIONS MUST BE COORDINATED WITH NDEP'S BUREAU OF WATER POLLUTION CONTROL (SWPC)
  3. ANALYSIS OF THE WATER MAIN WHICH INDICATES THAT THE WATER MEETS PRIMARY DRINKING WATER STANDARDS FOR COLIFORM BACTERIA (ABSENT FOR COLIFORM BACTERIA) HAVE BEEN OBTAINED AND REPORTED TO THE BUREAU OF SAFE DRINKING WATER (BSDW) PER ANWA STANDARD C251. TWO SETS OF CONSECUTIVE SAMPLES MUST BE TAKEN AT LEAST 24 HOURS APART FROM EVERY 1200 FEET OF MAIN, AT THE END OF THE LINE, AND FROM EACH BRANCH.
  4. PER NAC 445A.67145 (8), DURING THE CONSTRUCTION OF A DISTRIBUTION SYSTEM, ANY OPENINGS IN UNFINISHED PIPING OR APPURTENANCES MUST BE SEALED AT THE END OF EACH WORK DAY IN SUCH A MANNER AS TO PREVENT THE ENTRY OF BIRDS AND OTHER ANIMALS, DIRT, TRENCH WATER AND OTHER SOURCES OF POLLUTION OR CONTAMINATION.

SCALE  
HORIZ: 1" = 30'

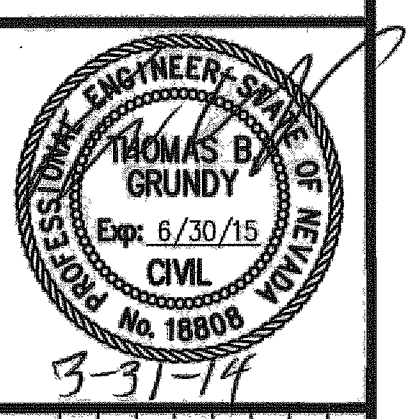
Call before you Dig  
Avoid cutting underground utility lines. It's costly.

Call 811  
OR  
1-800-227-2600

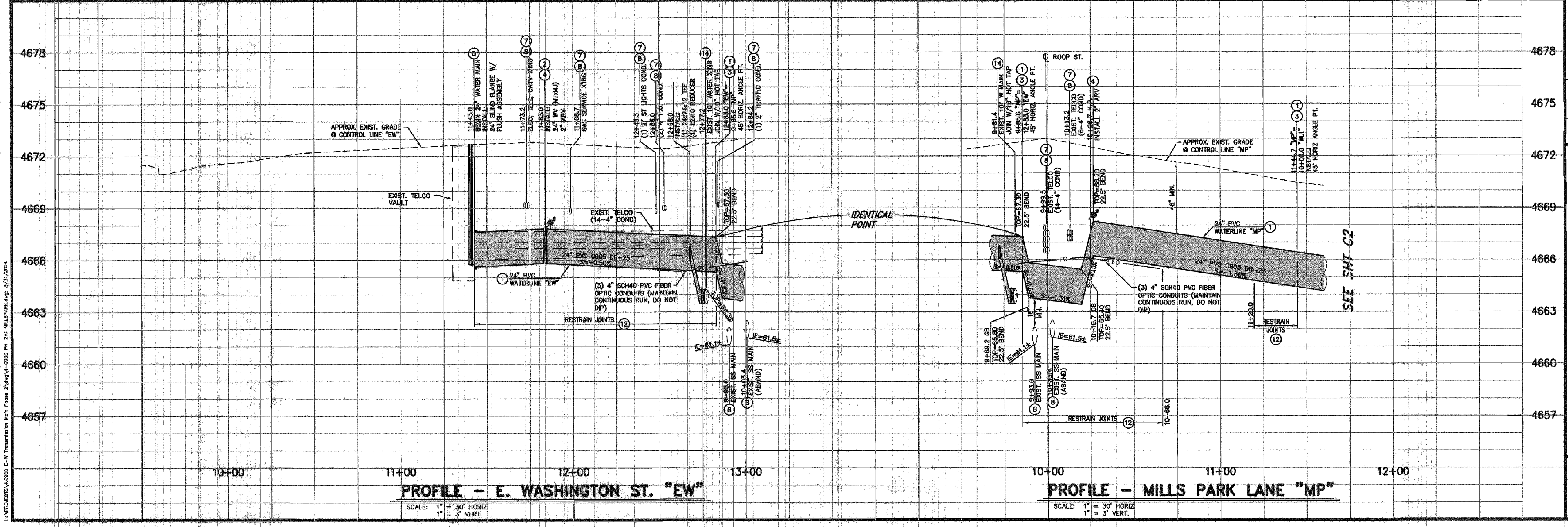
DESIGNED BY: DGR  
DRAWN BY: DGR  
CHECKED BY: TEG  
DWG NO. 4-9900 PH-241 MILLS PARK  
SCALE (HORIZ): 1" = 30'  
SCALE (VERT): 1" = 3'  
DATE: 3/31/2014

**CARSON CITY DEPARTMENT  
PUBLIC WORKS DEPARTMENT**

3505 BUTTI WAY CARSON CITY, NEVADA 89701  
PH: 887-2555 FAX: 887-2112



| BY | APP'D | DESCRIPTION | REV. | DATE |
|----|-------|-------------|------|------|
|    |       |             |      |      |



**PROFILE - E. WASHINGTON ST. "EW"**  
SCALE: 1" = 30' HORIZ  
1" = 3' VERT.

**PROFILE - MILLS PARK LANE "MP"**  
SCALE: 1" = 30' HORIZ  
1" = 3' VERT.

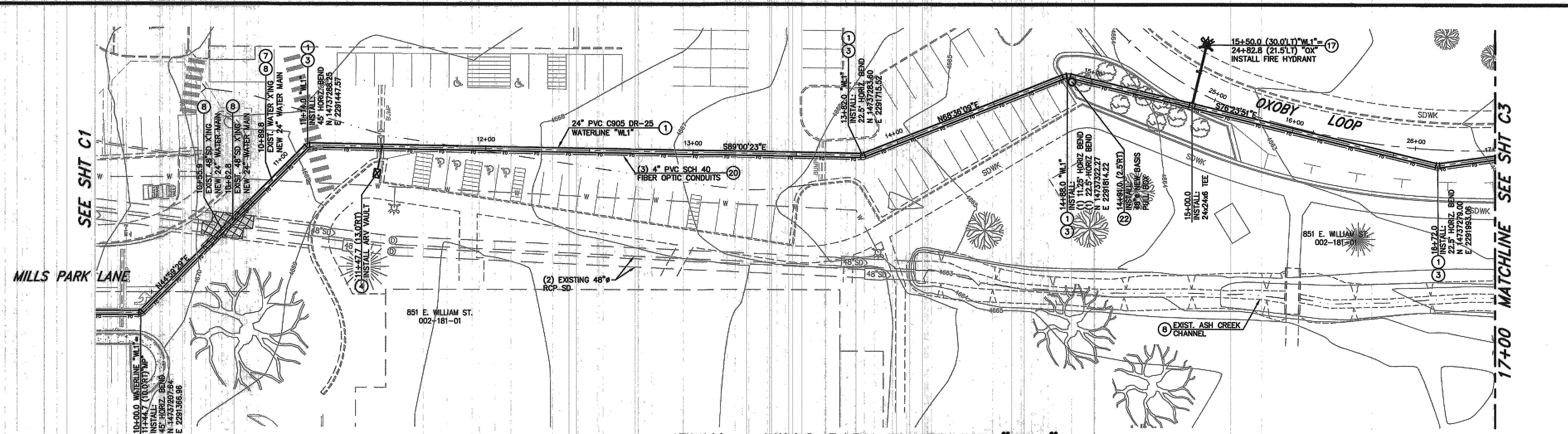
**EAST/WEST WATER TRANSMISSION MAIN  
PROJECT - PHASE 2A-1  
PROJECT No. 4.0900**

**E. WASHINGTON ST. WATERLINE "EW"  
MILLS PARK LANE WATERLINE "MP"  
PLAN & PROFILE**

SHEET  
**C1**  
OF  
**31**

FOR BIDDING PURPOSE ONLY





**PLAN - MILLS PARK WATERLINE "WL1"**

SCALE: 1" = 30'  
 REFERENCE SHEET C7 FOR STORM DRAIN PROFILES  
 REFERENCE SHEETS C8 TO C11 FOR SURFACE IMPROVEMENTS

**LEGEND:**  
 AREAS OF SPECIAL CONSTRUCTION PER WATER/SEWER SEPARATION GUIDELINES & SPECIAL CONSTRUCTION/VERTICAL CROSSING CONFLICTS NOTES.

**CONSTRUCTION NOTES:**

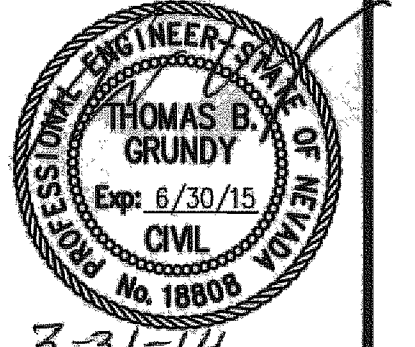
- 1) INSTALL PVC C905, DR-25, 165 PSI BELL & SPIGOT OR FUSIBLE PVC WATER MAIN (WHERE INDICATED ON PLAN) PER MODIFIED STD DRAWING C-1.2.1. JOINT RESTRAINTS FOR PVC PIPE SHALL BE USED ON ALL FITTINGS, AND AT SPECIFIC LOCATIONS WHERE IDENTIFIED ON THE PLAN. INSTALLATION PER MANUFACTURER'S RECOMMENDATIONS.
- 2) INSTALL JOINT RESTRAINTS FOR USE WITH C-905 PVC PIPE TO LIMITS SHOWN ON PLANS, PER MANUFACTURER'S RECOMMENDATIONS. FUSIBLE C-905 PVC PIPE MAY BE USED IN LIEU OF RESTRAINED JOINTS.
- 3) INSTALL LINE LOCATION BOX & LID PER STD DRAWINGS C-1.2.2 & C-1.2.3, AT ALL HORIZONTAL BEND LOCATIONS, UNLESS A WATER VALVE BOX IS AT SAME LOCATION.
- 4) INSTALL 2" POTABLE WATER AIR RELEASE VALVE PER STD. DRAWING C-3.1.10.
- 5) POT HOLE TO VERIFY EXACT DEPTH AND/OR MAKE & MATERIALS.
- 6) PROTECT-IN-PLACE
- 7) PROVIDE "SPECIAL CONSTRUCTION" MITIGATION TO BOTH AFFECTED LINES. CENTER NEW 20' LONG PIPE SECTION ON UTILITY CROSSING. REFERENCE STD DWG C-3.1.2 AND NDEP BUREAU OF SAFE DRINKING WATER VERTICAL CROSSING CONFLICTS SUMMARY, DATED 4/10/07, ON SHEET G3. INSTALL JOINT RESTRAINTS FOR USE WITH C-905 PVC PIPE TO LIMITS SHOWN ON PLANS, PER MANUFACTURER'S RECOMMENDATIONS. FUSIBLE C-905 PVC PIPE MAY BE USED IN LIEU OF RESTRAINED JOINTS.
- 8) INSTALL FIRE HYDRANT ASSEMBLY PER STD DRAWING C-3.1.7
- 9) CONSTRUCT GRADE BREAK TRANSITION PER DETAIL 4, SHEET C14.
- 10) INSTALL 4" DIAMETER, SCH 40, PVC CONDUITS WITH PULL ROPE, PER MODIFIED STD DWG C-1.2.1, LARGE RADIUS (36" MIN.) SWEEPS ONLY, ENCASED WITH 6" (INCHES) CONCRETE, WHERE REQUIRED.
- 11) INSTALL No. 9 PULL BOX WITH TRAFFIC RATED, BOLT DOWN, STEEL COVER MARKED "FIBER OPTIC" PER DETAIL 7, SHEET C15.
- 12) INSTALL NEW BASIS FIBERGLASS/POLYMER CONCRETE PULL BOX "FCA 400038T-00006" WITH, BOLT DOWN, COVER MARKED "FIBER OPTIC" PER DETAIL 7, SHEET C15.
- 13) REMOVE AND REPLACE EXISTING CURB, GUTTER & SIDEWALK AS REQUIRED FOR PULL BOX INSTALLATION. SET PULLBOX FLUSH WITH ADJACENT WALKWAY.
- 14) PERFORM TREE ROOT PRUNING AS REQUIRED PER SPECIFICATIONS.

SCALE  
 HORIZ: 1" = 30'

Call before you Dig  
 Avoid cutting underground utility lines. It's costly.  
  
 OR  
 1-800-227-2600

DESIGNED BY: DGR  
 DRAWN BY: DGR  
 CHECKED BY: TBG  
 DWG NO.: 4-0900 PH-2A1 MILLS/PK  
 SCALE (HORIZ): 1" = 30'  
 SCALE (VERT): 1" = 3'  
 DATE: 3/31/2014

**CARSON CITY PUBLIC WORKS DEPARTMENT**  
 3505 BUTTI WAY CARSON CITY, NEVADA 89701  
 PH: 887-2355 FAX: 887-2112

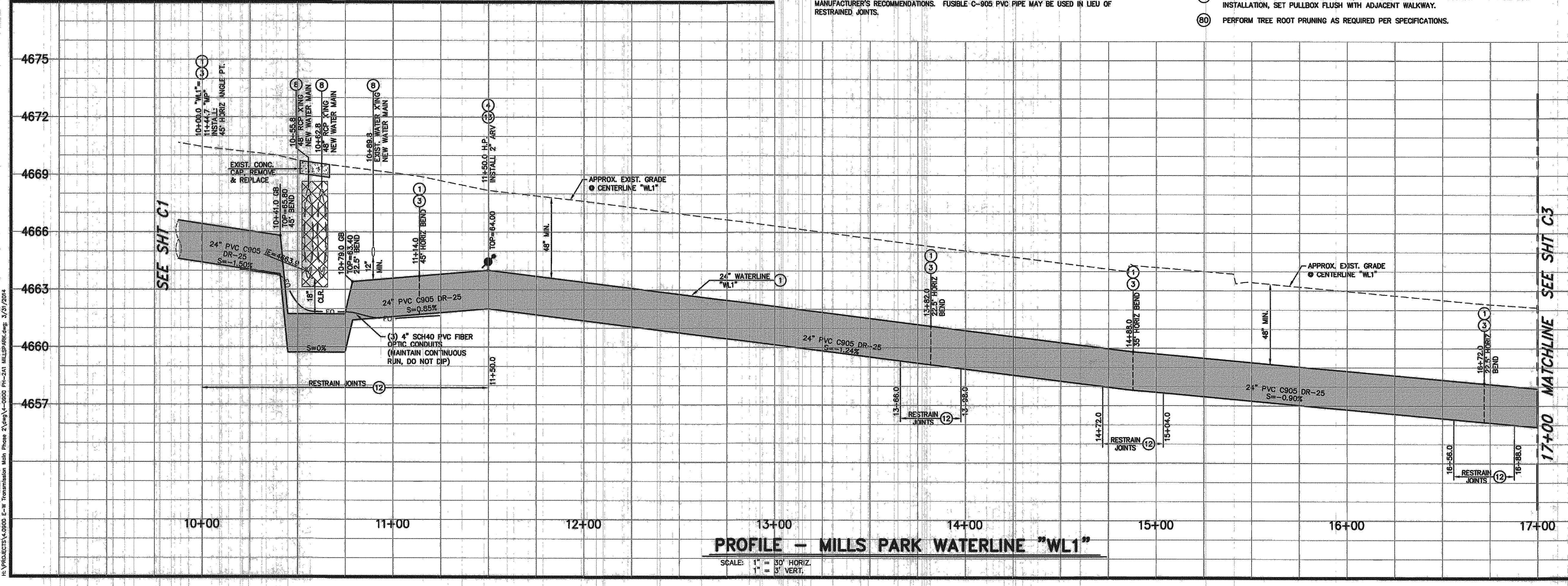


| REV. | DATE | DESCRIPTION |
|------|------|-------------|
|      |      |             |
|      |      |             |
|      |      |             |
|      |      |             |

**EAST/WEST WATER TRANSMISSION MAIN PROJECT - PHASE 2A-1 PROJECT No. 4.0900 MILLS PARK WATERLINE "WL1" PLAN & PROFILE STA 10+50 to STA 17+00**

SHEET  
**31**  
 OF  
 31

FOR BIDDING PURPOSE ONLY



**PROFILE - MILLS PARK WATERLINE "WL1"**

SCALE: 1" = 30' HORIZ.  
 1" = 3' VERT.

H:\PROJECTS\4.0900 E-W Transmission Main Phase 2A-1\MILLS/PK.dwg 3/31/2014





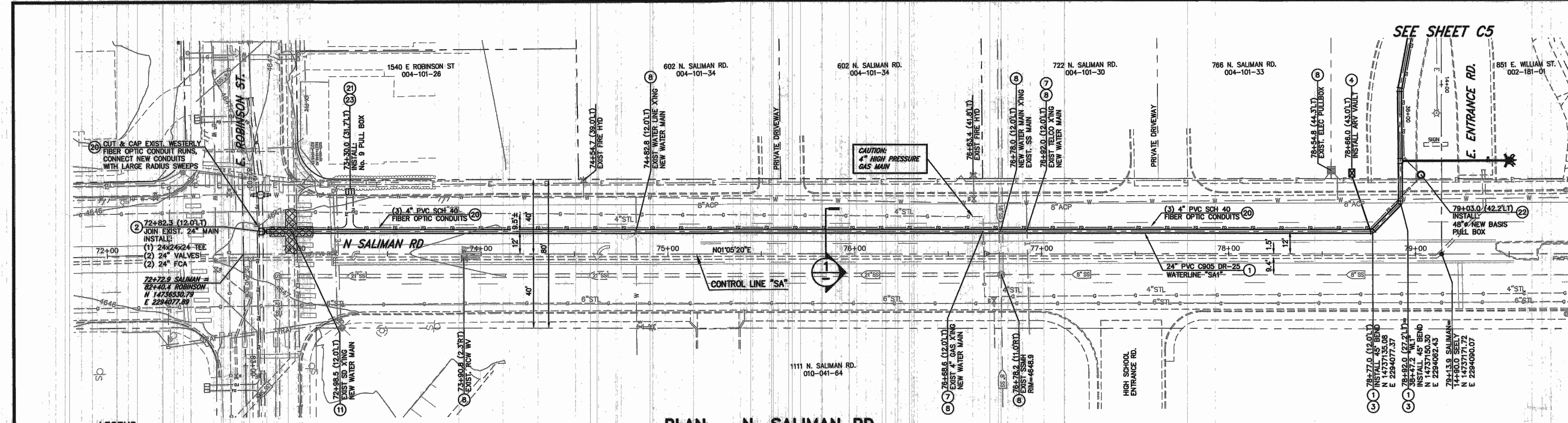




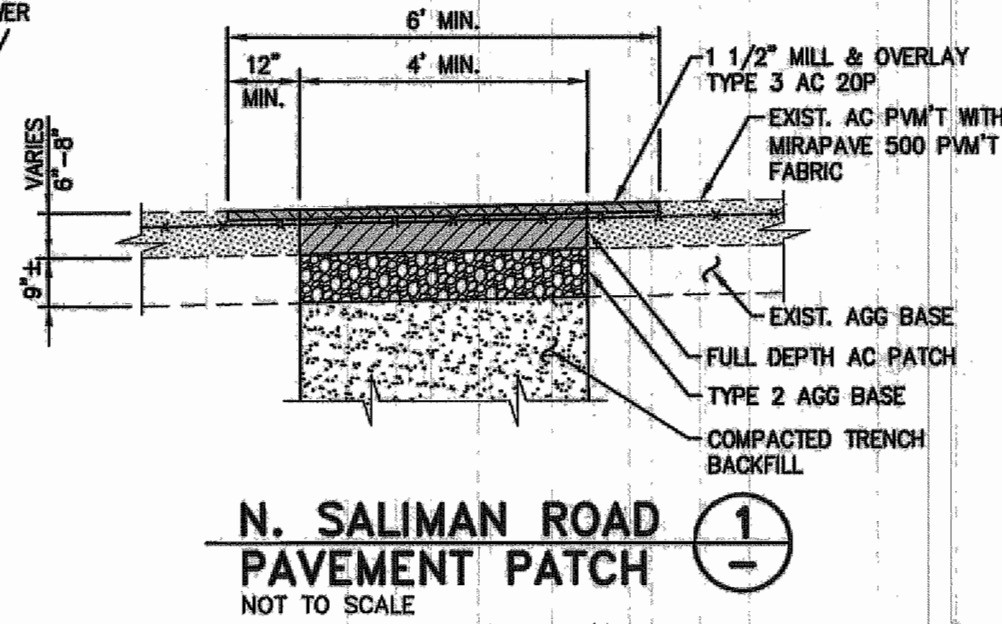








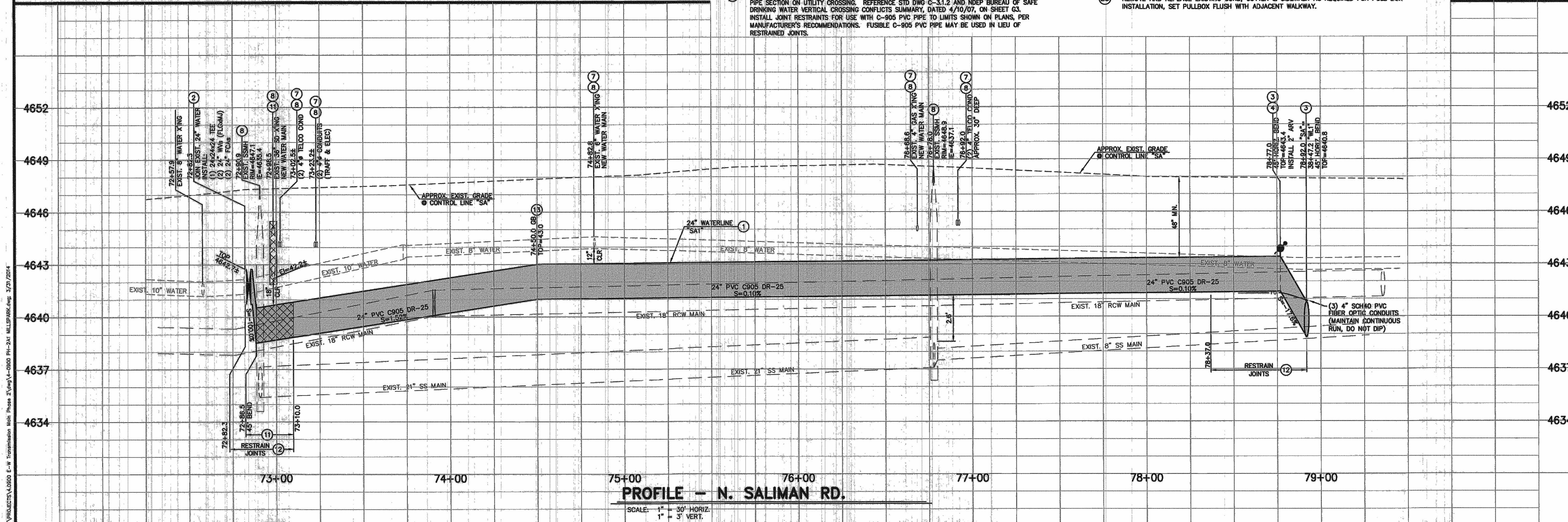
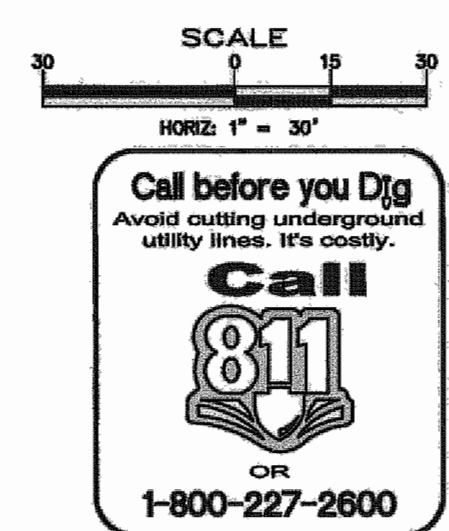
**LEGEND:**  
 AREAS OF SPECIAL CONSTRUCTION PER WATER/SEWER SEPARATION GUIDELINES & SPECIAL CONSTRUCTION/VERTICAL CROSSING CONFLICTS NOTES.



**PLAN - N. SALIMAN RD.**  
 SCALE: 1" = 30'

**CONSTRUCTION NOTES:**

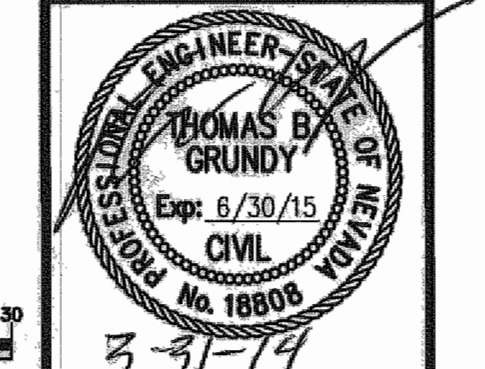
- INSTALL PVC C905, DR-25, 165 PSI BELL & SPIGOT OR FUSIBLE PVC WATER MAIN (WHERE INDICATED ON PLAN) PER MODIFIED STD DRAWING C-1.2.1. JOINT RESTRAINTS FOR PVC PIPE SHALL BE USED ON ALL FITTINGS, AND AT SPECIFIC LOCATIONS WHERE IDENTIFIED ON THE PLAN. INSTALLATION PER MANUFACTURER'S RECOMMENDATIONS.
- INSTALL 24" BUTTERFLY VALVE PER DETAIL 1, SHEET C14, WITH NUT EXTENDER TO EXTEND TOP OF NUT TO BETWEEN 18" TO 24" FROM TOP OF VALVE BOX.
- INSTALL LINE LOCATION BOX & LID PER STD DRAWINGS C-1.2.2. & C-1.2.3, AT ALL HORIZONTAL BEND LOCATIONS, UNLESS A WATER VALVE BOX IS AT SAME LOCATION.
- INSTALL 2" POTABLE WATER AIR RELEASE VALVE PER STD. DRAWING C-3.1.10.
- POTHOLE TO VERIFY EXACT DEPTH AND/OR MAKE & MATERIALS.
- PROTECT-IN-PLACE
- PROVIDE "SPECIAL CONSTRUCTION" MITIGATION TO BOTH AFFECTED LINES. CENTER NEW 20' LONG PIPE SECTION ON UTILITY CROSSING. REFERENCE STD DWG C-3.1.2 AND NDEP BUREAU OF SAFE DRINKING WATER VERTICAL CROSSING SUMMARY, DATED 4/10/07, ON SHEET G3.
- INSTALL JOINT RESTRAINTS FOR USE WITH C-905 PVC PIPE TO LIMITS SHOWN ON PLANS, PER MANUFACTURER'S RECOMMENDATIONS. FUSIBLE C-905 PVC PIPE MAY BE USED IN LIEU OF RESTRAINED JOINTS.
- INSTALL JOINT RESTRAINTS FOR USE WITH C-905 PVC PIPE TO LIMITS SHOWN ON PLANS, PER MANUFACTURER'S RECOMMENDATIONS. FUSIBLE C-905 PVC PIPE MAY BE USED IN LIEU OF RESTRAINED JOINTS.
- CONSTRUCT GRADE BREAK TRANSITION PER DETAIL 4, SHEET C14.
- LIMITS OF FULL DEPTH SAWCUT AND REMOVAL OF EXISTING AC PAVEMENT.
- INSTALL 4" DIAMETER, SCH 40, PVC CONDUITS WITH PULL ROPE, PER MODIFIED STD DWG C-1.2.1. LARGE RADIUS (36" MIN.) SWEEPS ONLY, ENCASED WITH 6" (INCHES) CONCRETE, WHERE REQUIRED.
- INSTALL No. 9 PULL BOX WITH TRAFFIC RATED, BOLT DOWN, STEEL COVER MARKED "FIBER OPTIC" PER DETAIL 7, SHEET C15.
- INSTALL NEW BASIS FIBERGLASS/POLYMER CONCRETE PULL BOX "FCA 4000361-00006" WITH, BOLT DOWN, COVER MARKED "FIBER OPTIC" PER DETAIL 7, SHEET C15.
- REMOVE AND REPLACE EXISTING CURB, GUTTER & SIDEWALK AS REQUIRED FOR PULL BOX INSTALLATION, SET PULLBOX FLUSH WITH ADJACENT WALKWAY.



**PROFILE - N. SALIMAN RD.**  
 SCALE: 1" = 30' HORIZ.  
 1" = 3' VERT.

DESIGNED BY: DGR  
 DRAWN BY: DGR  
 CHECKED BY: TEG  
 DWG NO.: 4-0900 PH-2A1 MILSPARK  
 SCALE (HORIZ): 1"=30'  
 SCALE (VERT): 1"=3'  
 DATE: 3/31/2014

**CARSON CITY PUBLIC WORKS DEPARTMENT**  
 3505 BUTTI WAY CARSON CITY, NEVADA 89701  
 PH: 887-2355 FAX: 887-2112



| REV. | DATE | DESCRIPTION |
|------|------|-------------|
|      |      |             |
|      |      |             |
|      |      |             |
|      |      |             |
|      |      |             |
|      |      |             |
|      |      |             |
|      |      |             |
|      |      |             |

**EAST/WEST WATER TRANSMISSION MAIN**  
**PROJECT - PHASE 2A-1**  
**PROJECT No. 4.0900**  
**N. SALIMAN ROAD**  
**PLAN & PROFILE**  
**STA 72+50 to STA 79+50**

SHEET  
**C6**  
 OF  
**31**

FOR BIDDING PURPOSE ONLY