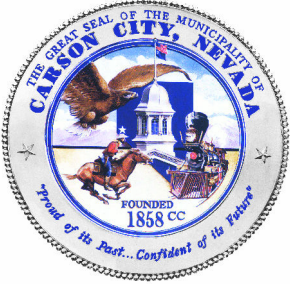
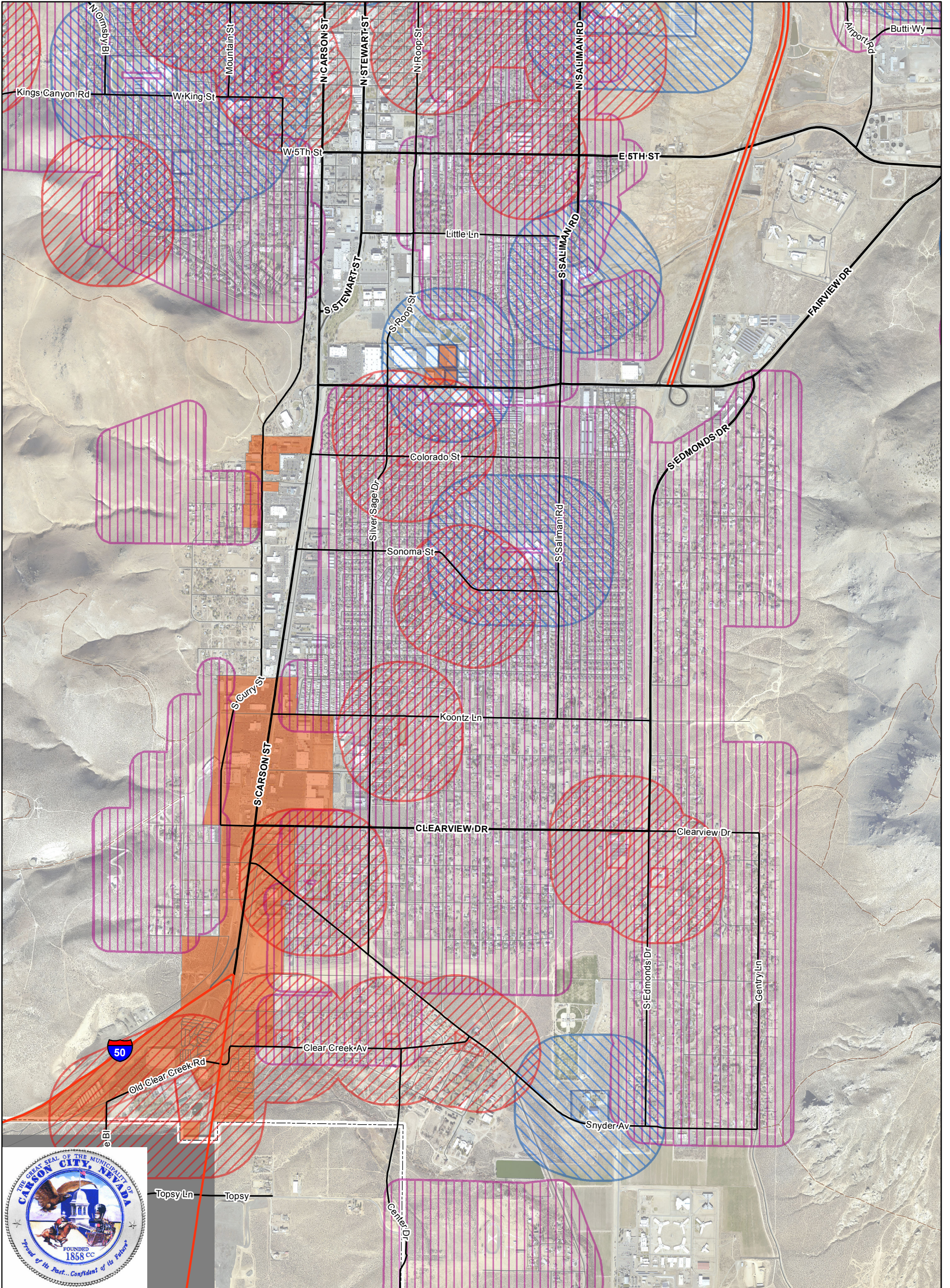





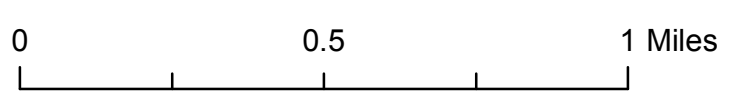


Proposed MME Dispensary Locations - South



-  300 Ft Buffer - Residential
-  1,000 Ft Buffer - Schools
-  1,000 Ft Buffer - Other Community Facilities
-  GC (General Commercial)
-  GI (General Industrial)



The data contained herein has been housed and/or compiled in a geographic information system (GIS) by Douglas County for the use of Carson City. The data does not represent survey delineation and should not be construed as a replacement for the authoritative source, plat maps, deeds, resurveys, etc. No liability is assumed by Carson City or Douglas County or as to the sufficiency or accuracy of the data.