

**City of Carson City  
Agenda Report**

**Date Submitted:** June 10, 2014

**Agenda Date Requested:** June 19, 2014

**Time Requested:** 20 Minutes

**To:** Mayor and Supervisors

**From:** Parks and Recreation Department

**Subject Title: For Possible Action:** To approve the Parks and Recreation Commission's recommendation to allocate up to \$30,000 from the Quality of Life Initiative (Question 18) Parks Capital, Undesignated Projects Fund to partner with the Redevelopment Authority and the Nevada Commission on Tourism to fund Phase 1 of the Carson City Fairgrounds/Fuji Park Directional and Event Banner Sign Project. (Vern L. Krahn, Park Planner / Tom Grundy, P.E., Project Manager)

**Staff Summary:** Carson City has been awarded a \$20,000 grant from the Nevada Commission on Tourism (NCOT) for a directional and event banner sign at the Fairgrounds/Fuji Park complex adjacent to U.S. Highway 395. In addition, the Redevelopment Authority Citizens Committee voted unanimously to recommended \$20,000 of Redevelopment Authority funds be used to match NCOT's grant. Then on June 3, 2014, the Parks and Recreation Commission voted 6-0-1 (with one abstention) to allocate up to \$30,000 from the Quality of Life Initiative (Question 18) Parks Capital, Undesignated Projects Fund to partner with the Nevada Commission on Tourism and the Redevelopment Authority Citizens Committee to fund Phase 1 of the Carson City Fairgrounds/Fuji Park Complex Directional and Event Banner Sign Project. The total cost for Phase 1 is estimated to not exceed \$70,000.

**Type of Action Requested:** (check one)

- Resolution                       Ordinance  
 Formal Action/Motion    Other (Specify)

**Does This Action Require A Business Impact Statement:**    Yes    No

**Recommended Board Action:** I move to approve the Parks and Recreation Commission's recommendation to allocate up to \$30,000 from the Quality of Life Initiative (Question 18) Parks Capital, Undesignated Projects Fund to partner with the Redevelopment Authority and the Nevada Commission on Tourism to fund Phase 1 of the Carson City Fairgrounds/Fuji Park Directional and Event Banner Sign Project.

**Explanation for Recommended Board Action:** City staff believes the Fairgrounds/Fuji Park complex is an under-utilized facility and the City's long term desire is to have the facility become an event destination center (economic engine) for many large multi-day events. A sign on US 395 South is needed to identify the complex, make motorists aware of the complex's oasis amenities, be a promotional tool for event promoters to inform both visitors and residents about upcoming events, and be a communication tool for public service announcements.

Due to City funding limitations, the directional and event banner sign is designed to be constructed in three phases. **Phase 1 is a complete stand-alone and functionally independent project.** Phase 1 will provide the sign's base with the incorporation of translucent directional information panels and an upper metal frame which will be designed to allow for changeable banners. These banners would be changed out for the different events happening at the complex.

In preparation for this project, City staff applied for and received a Special Use Permit for the sign on Wednesday, March 26, 2014.

**Applicable Statute, Code, Policy, Rule or Regulation:** NRS 279.408, NRS 279.572; Carson City Parks and Recreation Master Plan Section 7.1.2; and Quality of Life Initiative (Question 18)

**Fiscal Impact:** Currently, the Quality of Life Initiative (Question 18) Parks Capital, Undesignated Projects Fund has \$70,364. Expending \$30,000 from this account will leave a balance of \$40,364.

**Explanation of Impact:** The addition of \$30,000 to the project budget will provide an enough funding for Phase 1 of the sign project. Also, NCOT's grant offsets the City's project's budget by \$20,000. As a result, the City will spend \$50,000 to get a \$70,000 sign.


**Funding Source:** Quality of Life Initiative (Question 18) Parks Capital, Undesignated Projects Fund  
Debit 254-504-6452-7199  
Fairgrounds/Fuji Park Reader Board Project (NCOT Grant)  
Credit Project # 011409

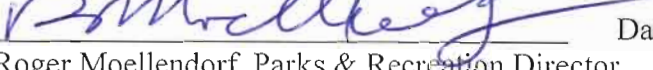
**Alternatives:**

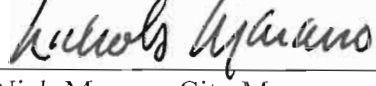
- 1) Not fund the \$30,000 for the project and direct staff to decline the NCOT grant
- 2) Fund a smaller dollar amount from Quality of Life Initiative (Question 18) Parks Capital, Undesignated Projects Fund and direct staff to find another funding source for the rest of the project funds
- 3) Direct staff to find a different funding source for the project

**Supporting Material:** Exhibit #1 – Parks and Recreation Commission Staff Report and Exhibits dated May 6, 2014

Exhibit #2 – Parks and Recreation Commission Staff Report and Exhibits dated June 3, 2014

**Prepared By:**  Date: 6/5/14  
Vern L. Krahn, Park Planner

**Reviewed By:**  Date: 6/10/14  
Roger Moellendorf, Parks & Recreation Director

 Date: 6/10/14  
Nick Marano, City Manager

 Date: 6/19/14  
District Attorney's Office

 Date: 6/10/14  
Finance Department

**Board Action Taken:**

Motion: \_\_\_\_\_ 1: \_\_\_\_\_ Aye/Nay  
2: \_\_\_\_\_  
\_\_\_\_\_  
\_\_\_\_\_  
\_\_\_\_\_

\_\_\_\_\_  
(Vote Recorded By)

**PARKS AND RECREATION COMMISSION  
STAFF REPORT**

**MEETING DATE:** May 6, 2014

**AGENDA ITEM NUMBER:** 3B

**APPLICANT:** Roger Moellendorf, Parks and Recreation Director  
Vern L. Krahn, Park Planner

**REQUEST:** **For Possible Action:** To recommend to the Board of Supervisors approval of \$30,000 from the Quality of Life (Question 18) parks capital, undesignated projects to partner with the Redevelopment Authority Citizen Committee and the Nevada Commission on Tourism to fund Phase 1 of the Carson City Fairgrounds at Fuji Park Directional and Event Banner Sign Project.

**GENERAL DISCUSSION:**

At the April 7, 2014, Redevelopment Authority Citizen Committee meeting, Interim City Manager, Marena Works announced that Carson City had received a \$20,000 grant from the Nevada Commission on Tourism for a directional and event banner sign at the Fairgrounds/Fuji Park Complex (Refer to Exhibit A). The City received the official notification letter on Monday, March 31, 2014.

The Carson City Fairgrounds at Fuji Park directional and event sign was identified as a site amenity in the Conceptual Plan for the complex adopted by the Board of Supervisors in 2006 (Refer to Exhibit B). In addition, City staff believes the complex is an under-utilized facility and the City's long term desire is to have the facility become an event destination center for many large multi-day events. A sign on US 395 South is needed to make the motorist aware of the complex's amenities. Also, the sign would be a significant promotional tool for event promoters to use as a communication tool to inform both visitors and residents about upcoming events.

*Due to City funding limitations, the directional and event banner sign is designed to be constructed in three phases (Refer to Exhibit C). In addition, each phase would be a complete stand-alone and functionally independent project.* Phase 1 will provide the sign's base with the incorporation of directional information and an upper metal frame which will be designed to allow for changeable banners to be installed for event promotion at the complex. The estimated cost for Phase 1 is \$70,000. As mentioned above, the Nevada Commission of Tourism has provided a \$20,000 grant toward this project. City staff is requesting \$30,000 from the Quality of Life (Question 18) parks capital, undesignated projects to partner with the Redevelopment Authority Citizen Committee (\$20,000 – matching funds for NCOT grant) and the Nevada Commission on Tourism (\$20,000 – NCOT Grant) to fund Phase 1 of the sign.

Unfortunately, the project schedule will not allow the sign's first phase to be completed until after the Fair (Refer to Exhibit D). Although disappointing, this improvement is still worth pursuing because this infrastructure will support any future Fair and other events at the complex. In preparation for this project, City staff applied for and received a Special Use Permit for the complex's sign on Wednesday, March 26, 2014.

## Carson City Visitors Bureau Estimated Economic Impact Table

Visitors	Total Spending	Taxable Sales	Sales Tax	General Fund	Rooms Booked	Lodging Revenue	Room Tax	CCVB Revenue
25	\$ 2,950.00	\$ 2,448.50	\$ 183.03	\$ 55.09	10.08	\$ 798.89	\$ 79.89	\$ 39.94
50	\$ 5,900.00	\$ 4,897.00	\$ 366.05	\$ 110.18	20.16	\$ 1,597.78	\$ 159.78	\$ 79.89
100	\$ 11,800.00	\$ 9,794.00	\$ 732.10	\$ 220.37	40.32	\$ 3,195.56	\$ 319.56	\$ 159.78
150	\$ 17,700.00	\$ 14,691.00	\$ 1,098.15	\$ 330.55	60.48	\$ 4,793.35	\$ 479.33	\$ 239.67
200	\$ 23,600.00	\$ 19,588.00	\$ 1,464.20	\$ 440.73	80.65	\$ 6,391.13	\$ 639.11	\$ 319.56
250	\$ 29,500.00	\$ 24,485.00	\$ 1,830.25	\$ 550.91	100.81	\$ 7,988.91	\$ 798.89	\$ 399.45
500	\$ 59,000.00	\$ 48,970.00	\$ 3,660.51	\$ 1,101.83	201.61	\$ 15,977.82	\$ 1,597.78	\$ 798.89
1000	\$ 118,000.00	\$ 97,940.00	\$ 7,321.02	\$ 2,203.65	403.23	\$ 31,955.65	\$ 3,195.56	\$ 1,597.78
1500	\$ 177,000.00	\$ 146,910.00	\$ 10,981.52	\$ 3,305.48	604.84	\$ 47,933.47	\$ 4,793.35	\$ 2,396.67
2000	\$ 236,000.00	\$ 195,880.00	\$ 14,642.03	\$ 4,407.30	806.45	\$ 63,911.29	\$ 6,391.13	\$ 3,195.56
2500	\$ 295,000.00	\$ 244,850.00	\$ 18,302.54	\$ 5,509.13	1008.06	\$ 79,889.11	\$ 7,988.91	\$ 3,994.46
5000	\$ 590,000.00	\$ 489,700.00	\$ 36,605.08	\$ 11,018.25	2016.13	\$ 159,778.23	\$ 15,977.82	\$ 7,988.91

Visitors= 100+ miles & staying in Carson City  
 Total Spending= \$118 per person / per day  
 Taxable sales = \$97.94 per person / per day  
 Sales Tax= 7.475%  
 Rooms Booked = 2.48 people per room  
 Lodging Revenue = \$79.25 per room / per night (\$20.06 per person)  
 Room Tax= 10%



Agenda Item 3B (Handout)

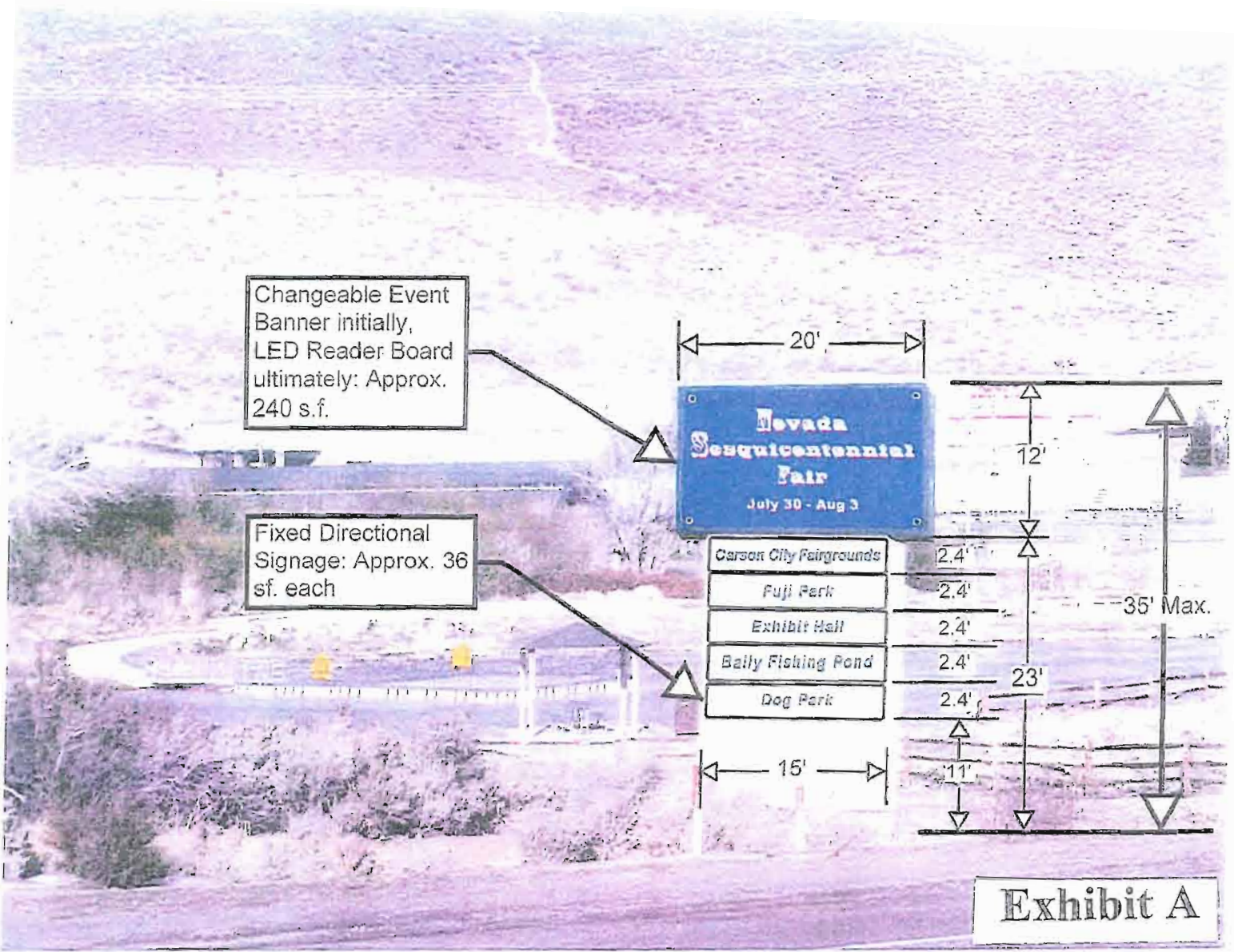


**CARSON CITY  
PARKS AND RECREATION**  
3303 BUTTE WAY CARSON CITY, NEVADA 89701  
PH: 887-2262

**CARSON CITY FAIRGROUNDS  
& FUJI PARK COMPLEX  
DIRECTIONAL/EVENT BANNER SIGN  
CONCEPTUAL SIGN**

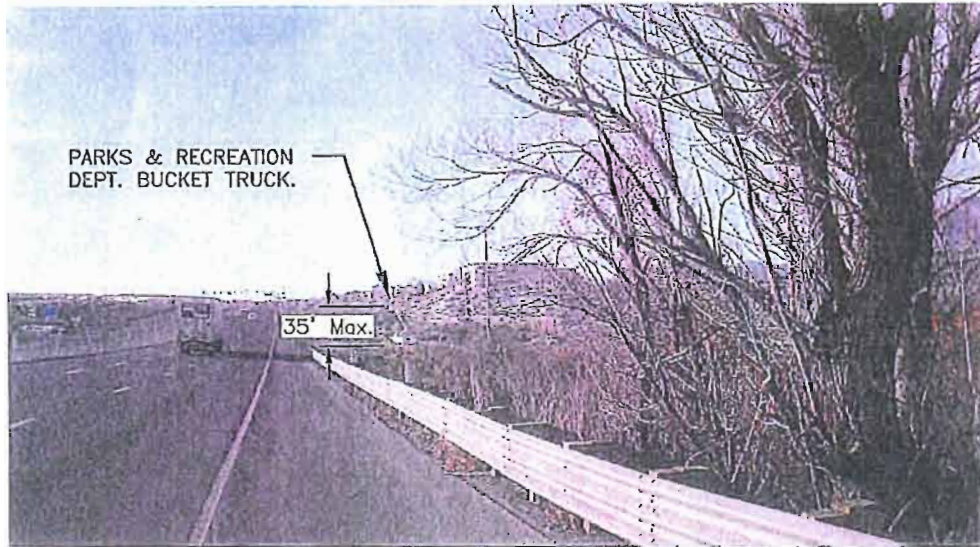
DESIGNED BY: TG  
DRAWN BY: DLO  
CHECKED BY: TG  
SCALE (HORIZ): AS SHOWN  
DATE: 2/19/14

**FIGURE  
1**



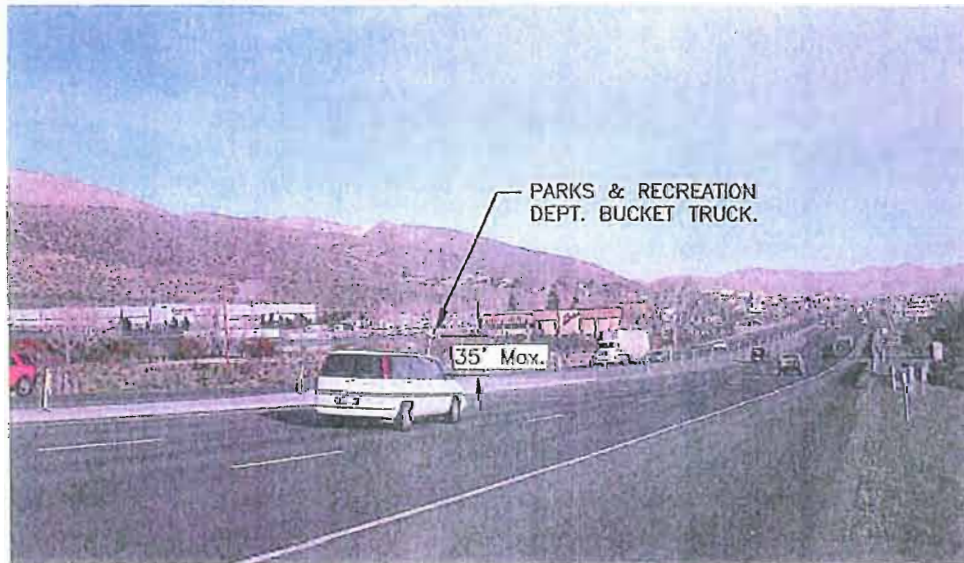
**CARSON CITY FAIRGROUNDS & FUJI PARK COMPLEX  
DIRECTIONAL/EVENT BANNER CONCEPTUAL SIGN WITH APPROXIMATE DIMENSIONS**  
Final drawings for sign permit to be provided by sign contractor.





SIGN SITE FROM 600' NORTH

Looking up the hill. Please note the relative size of the semi tractor/trailer and the Parks & Recreation Dept. bucket truck, with the bucket placed at the top of sign elevation. It is apparent that the sign needs to be a significant height.



SIGN SITE FROM 600' SOUTH

Looking down the hill. Please note the relative size of the semi tractor/trailer, the van and the Parks & Recreation Dept. bucket truck, with the bucket placed at the top of sign elevation. It is apparent that the sign needs to be a significant height.

**CARSON CITY  
PARKS AND RECREATION**  
3303 BUTTI WAY CARSON CITY, NEVADA 89701  
PH: 887-2262

**CARSON CITY FAIRGROUNDS  
& FUJI PARK COMPLEX**  
**DIRECTIONAL/EVENT BANNER SIGN**  
**EXISTING SITE PHOTOS**

DESIGNED BY: \_\_\_\_\_ TO  
DRAWN BY: \_\_\_\_\_ DLO  
CHECKED BY: \_\_\_\_\_ IC  
SCALE (HORIZ): AS SHOWN  
DATE: 2/13/14

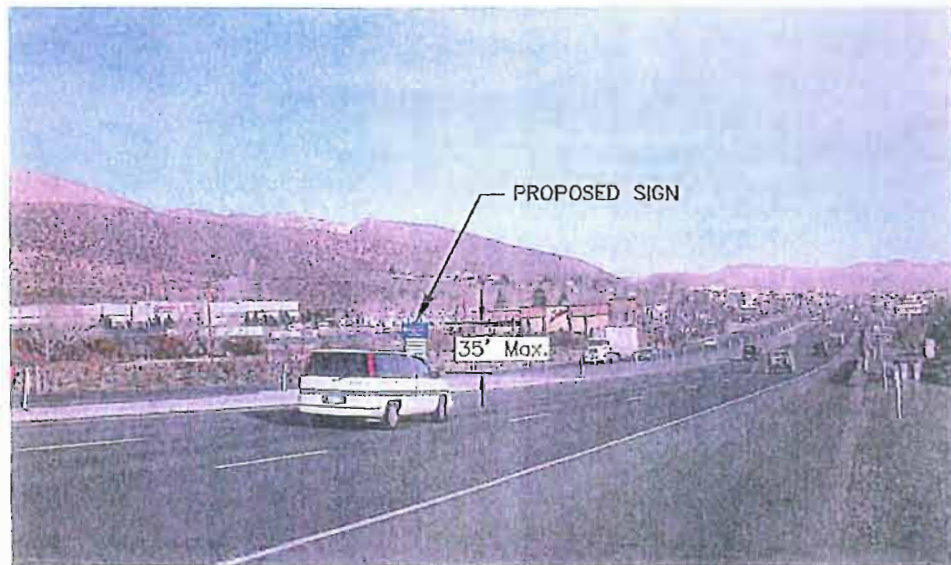
**FIGURE**

**2**



SIGN SITE FROM 600' NORTH

Looking up the hill. Please note the relative size of the semi tractor/trailer and the proposed sign.. It is apparent that the sign needs to be a significant height.



SIGN SITE FROM 600' SOUTH

Looking down the hill. Please note the relative size semi tractor/trailer, the van, and the proposed sign. It is apparent that the sign needs to be a significant height.

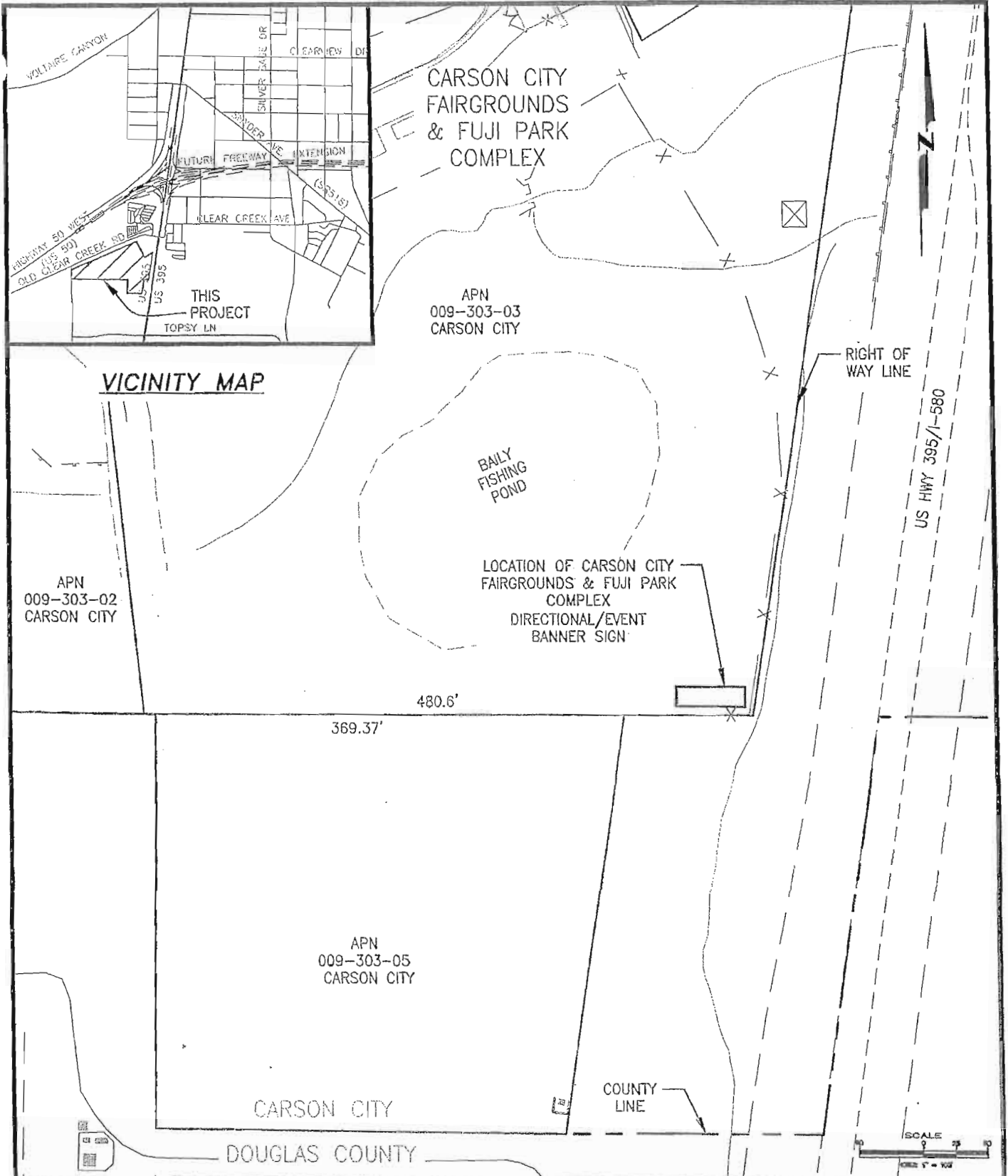
**CARSON CITY  
PARKS AND RECREATION**  
3303 BUTTI WAY CARSON CITY, NEVADA 89701  
PH: 887-2262

**CARSON CITY FAIRGROUNDS  
& FUJI PARK COMPLEX**  
DIRECTIONAL/EVENT BANNER SIGN  
CONCEPTUAL SIGN SITE PHOTOS

DESIGNED BY: TG  
DRAWN BY: DLO  
CHECKED BY: TG  
SCALE (HORIZ): AS SHOWN  
DATE: 2/12/14

**FIGURE  
3**





**CARSON CITY  
PARKS AND RECREATION**  
3303 BUTTI WAY CARSON CITY, NEVADA 89701  
PH: 887-2262

**CARSON CITY FAIRGROUNDS  
& FUJI PARK COMPLEX  
DIRECTIONAL/EVENT BANNER SIGN  
SITE PLAN**

DESIGNED BY: TG  
DRAWN BY: DLO  
CHECKED BY: TG  
SCALE (HORIZ): AS SHOWN  
DATE: 2/13/14

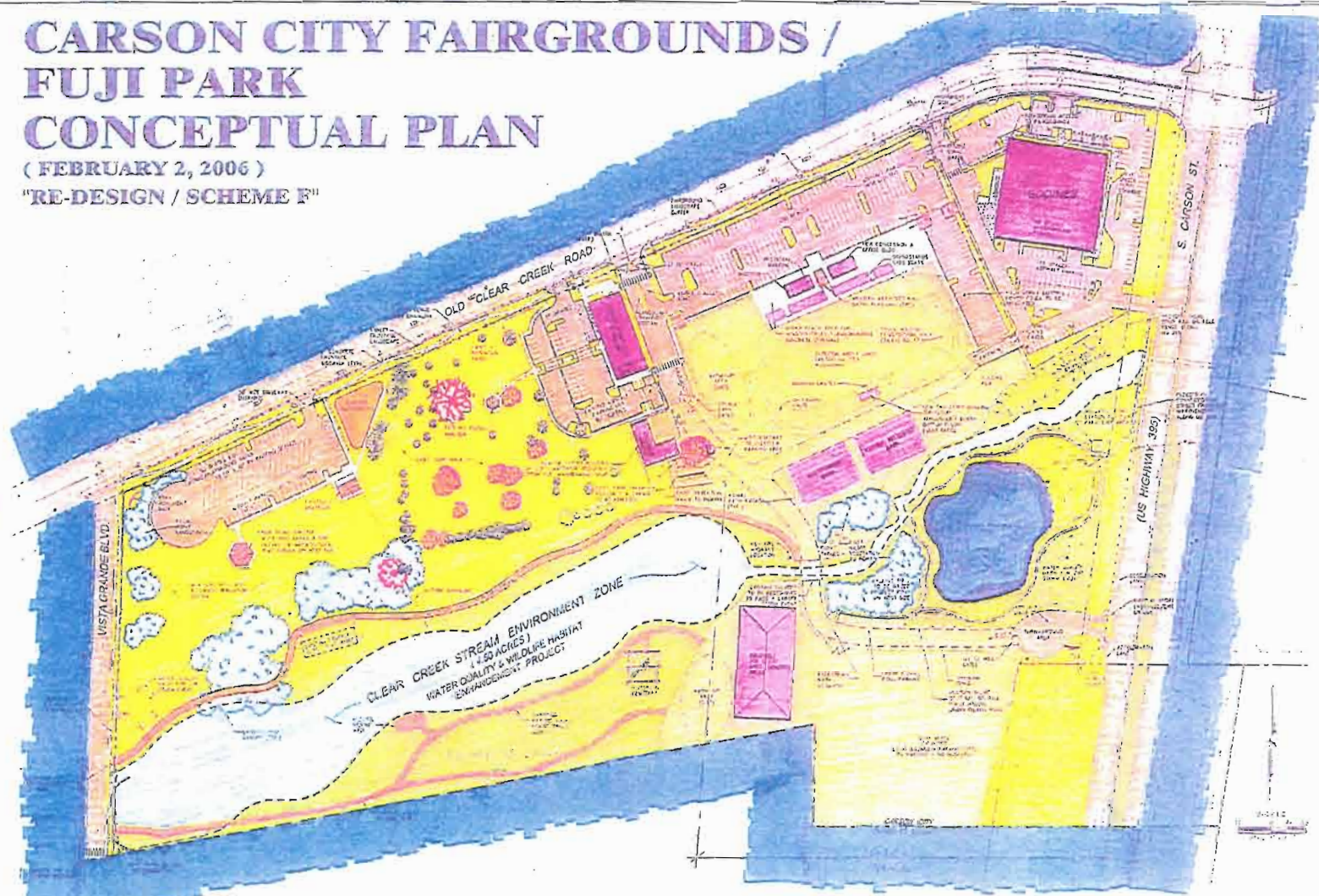
**FIGURE  
4**



# CARSON CITY FAIRGROUNDS / FUJI PARK CONCEPTUAL PLAN

( FEBRUARY 2, 2006 )

"RE-DESIGN / SCHEME F"



\*Carson City Fairgrounds / Fuji Park User Coalition approved Conceptual Plan on February 2, 2006

Exhibit B

**Fairgrounds/Fuji Complex Sign**  
**Phase 1 Preliminary Estimate of Probable Costs\***  
 No electrical service, lighting or reader boards  
 4/13/2014

**Funding**

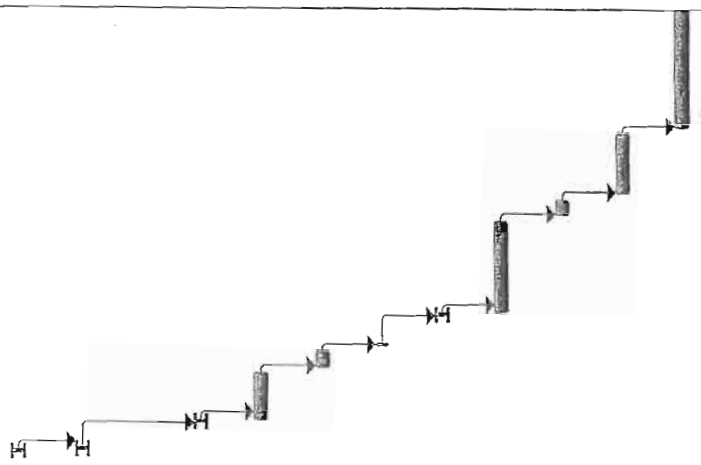
NCOT	\$	20,000
RCCA (Match to NCOT Grant)	\$	20,000
Q18	\$	30,000
<b>Total Funding</b>	<b>\$</b>	<b>70,000</b>

**Costs**

RFP	\$	520
Staff Time for RFP	\$	1,600
Permits	\$	550
Construction	\$	58,000
Testing	\$	600
CM	\$	500
PM (tg, vk)	\$	2,600
subtotal	\$	64,370
Contingency	\$	5,630
<b>Total Estimated Cost</b>	<b>\$</b>	<b>70,000</b>

\* This estimate of probable costs represents staff's best estimate for the proposed work, based on limited data.

ID	Task Mode	Task Name	Duration	Start	Finish	Predecessors
1		Funding Approval	9 days	Mon 5/5/14	Thu 5/15/14	
2		RACC Meeting	1 day	Mon 5/5/14	Mon 5/5/14	
3		Parks and Rec Commission Meeting	1 day	Tue 5/6/14	Tue 5/6/14	2
4		Redevelopment Authority/BOS	1 day	Thu 5/15/14	Thu 5/15/14	3
5		RFP on Street	11 days	Fri 5/16/14	Fri 5/30/14	4
6		Evaluate RFP's	5 days	Mon 6/2/14	Fri 6/6/14	5
7		Meet to Discuss RFP's	1 day	Mon 6/9/14	Mon 6/9/14	6
8		Award at BOS	1 day	Thu 6/19/14	Thu 6/19/14	7
9		Contractor to Design Sign	21 days	Fri 6/20/14	Fri 7/18/14	8
10		Permit	5 days	Mon 7/21/14	Fri 7/25/14	9
11		Manufacture/Construct	15 days	Mon 7/28/14	Fri 8/15/14	10
12		Closeout	28 days	Mon 8/18/14	Wed 9/24/14	11



Project Fuji Sign Schedule  
Date: Sun 4/13/14

**Exhibit D**

Legend:

- Task: [Bar]
- Split: [Bar with vertical line]
- Milestone: [Diamond]
- Summary: [Bar with arrow]
- Project Summary: [Bar with arrow]
- External Tasks: [Bar with arrow]
- External Milestone: [Diamond]
- Inactive Task: [Bar with dotted line]
- Inactive Milestone: [Diamond]
- Inactive Summary: [Bar with arrow]
- Manual Task: [Bar with arrow]
- Duration-only: [Bar with arrow]
- Manual Summary Rollup: [Bar with arrow]
- Manual Summary: [Bar with arrow]
- Start-only: [Bar with arrow]
- Finish-only: [Bar with arrow]
- Deadline: [Bar with arrow]
- Progress: [Bar with arrow]





Visual id 3B Presentation





Visual in 3B  
Presentation

**PARKS AND RECREATION COMMISSION  
STAFF REPORT**

**MEETING DATE:** June 3, 2014

**AGENDA ITEM NUMBER:** 3A

**APPLICANT:** Roger Moellendorf, Parks and Recreation Director  
Vern L. Krahn, Park Planner  
Tom Grundy, P.E. / Project Manager

**REQUEST:** **For Possible Action:** To recommend to the Board of Supervisors approval of \$30,000 from the Quality of Life (Question 18) parks capital, undesignated projects to partner with the Redevelopment Authority Citizen Committee and the Nevada Commission on Tourism to fund Phase 1 of the Carson City Fairgrounds at Fuji Park Directional and Event Banner Sign Project; or, recommend to the Board of Supervisors to return the Nevada Commission on Tourism \$20,000 grant.

**GENERAL DISCUSSION:** At the May 6, 2014, Parks and Recreation Commission meeting City staff presented a Fairgrounds/Fuji Park complex directional/event banner sign and requested \$30,000 from the Quality of Life (Question 18) parks capital, undesignated projects to partner with the Redevelopment Authority Citizen Committee and the Nevada Commission on Tourism to fund Phase 1 of the project (Exhibit #1). The Commission tabled action on this item and requested City staff to return with additional information on the project. In addition, Parks and Recreation staff met independently with six Commissioners and in groups no larger than two on Wednesday afternoon, May 21, 2014 to tour the project site.

As mentioned above, the Commission wanted additional information on the project. Staff will be returning at this meeting to address the following concerns.

- 1) Fairgrounds/Fuji Park Complex Signage Plan (Exhibit B) ✓
  - A. Integrated Signage Plan – Directional/Event Banner Sign, NDOT Information Signs (Brown), Complex Monument Sign, and Complex Facilities Sign Arrays along Old Clear Creek Road
- 2) Sign Location
  - A. Master Plan – Right-in / Right-out entrance (Exhibit C) ✓
  - B. Traffic Counts and Traffic Patterns (Exhibit D) ✓
    - i. Correction of traffic counts on US 395 and Old Clear Creek Road (\*\* Refer to note at bottom of staff report on page 2))
    - ii. Traffic patterns related to sign purpose
  - C. Other Possible Locations
    - i. At Complex – Along US 395 or Old Clear Creek Road
    - ii. Off Site – on private property or within NDOT right-of-way.
- 3) Sign Size and Visibility (Exhibit E) ✓
  - A. Determination of Size:
    - i. Factors considered
      1. Grade difference
      2. Visual obstructions
      3. Distance from roadway
      4. View shed surrounding sign location



- B. Process Used
  - i. Bucket truck and lettering mock-ups
  - ii. Driving on highway while observing proposed location
- C. Photo-simulation's Development Process Related to Accuracy
- D. Size Comparison between Fairgrounds/Fuji Park Sign vs. Community Center Sign (Exhibit F) ✓
- E. Size Related to Similar Signs in Commercial Districts (Exhibit G) ✓
- 4) Sign Style Limited Options Available
  - A. Replaceable Letters
  - B. Banners
    - i. Banner issues: single vs double – cost comparisons
  - C. Static Sign
  - D. LED Reader Board
- 5) Role of Sign / Return on \$30,000 of Quality of Life Investment
  - A. Event Promotional Tool
  - B. Community Communication Tool

***Due to City funding limitations, the directional and event banner sign is designed to be constructed in three phases. In addition, each phase would be a complete stand-alone and functionally independent project.*** As discussed with the Commission previously, Phase 1 will provide the sign's base with the incorporation of directional information and an upper metal frame which will be designed to allow for changeable banners to be installed for event promotion at the complex. The estimated cost for Phase 1 is \$70,000. The Nevada Commission of Tourism has provided a \$20,000 reimbursable grant toward this project. In addition, the Redevelopment Authority Citizen's Committee has recommended to the Board of Supervisors that \$20,000 of redevelopment fund be used toward this project provided the Parks and Recreation Commission is willing to commit \$30,000 from the Quality of Life (Question 18) parks capital, undesignated projects to this project.

With the addition of the \$30,000 of Quality of Life Initiative funds and our department's partnership with the Redevelopment Authority Citizen Committee (\$20,000 – matching funds for NCOT grant) and the Nevada Commission on Tourism (\$20,000 – NCOT Grant) Phase 1 would be completely funded at \$70,000. If after staff's presentation, the Commission does not want to financially support the project. City staff would appreciate a recommendation to the Board of Supervisors to return the \$20,000 Nevada Commission on Tourism grant.

**RECOMMENDED ACTION:** I move to recommend to the Board of Supervisors approval of \$30,000 from the Quality of Life (Question 18) parks capital, undesignated projects to partner with the Redevelopment Authority Citizen Committee and the Nevada Commission on Tourism to fund Phase 1 of the Carson City Fairgrounds at Fuji Park Directional and Event Banner Sign Project; or, recommend to the Board of Supervisors to return the Nevada Commission on Tourism \$20,000 grant.

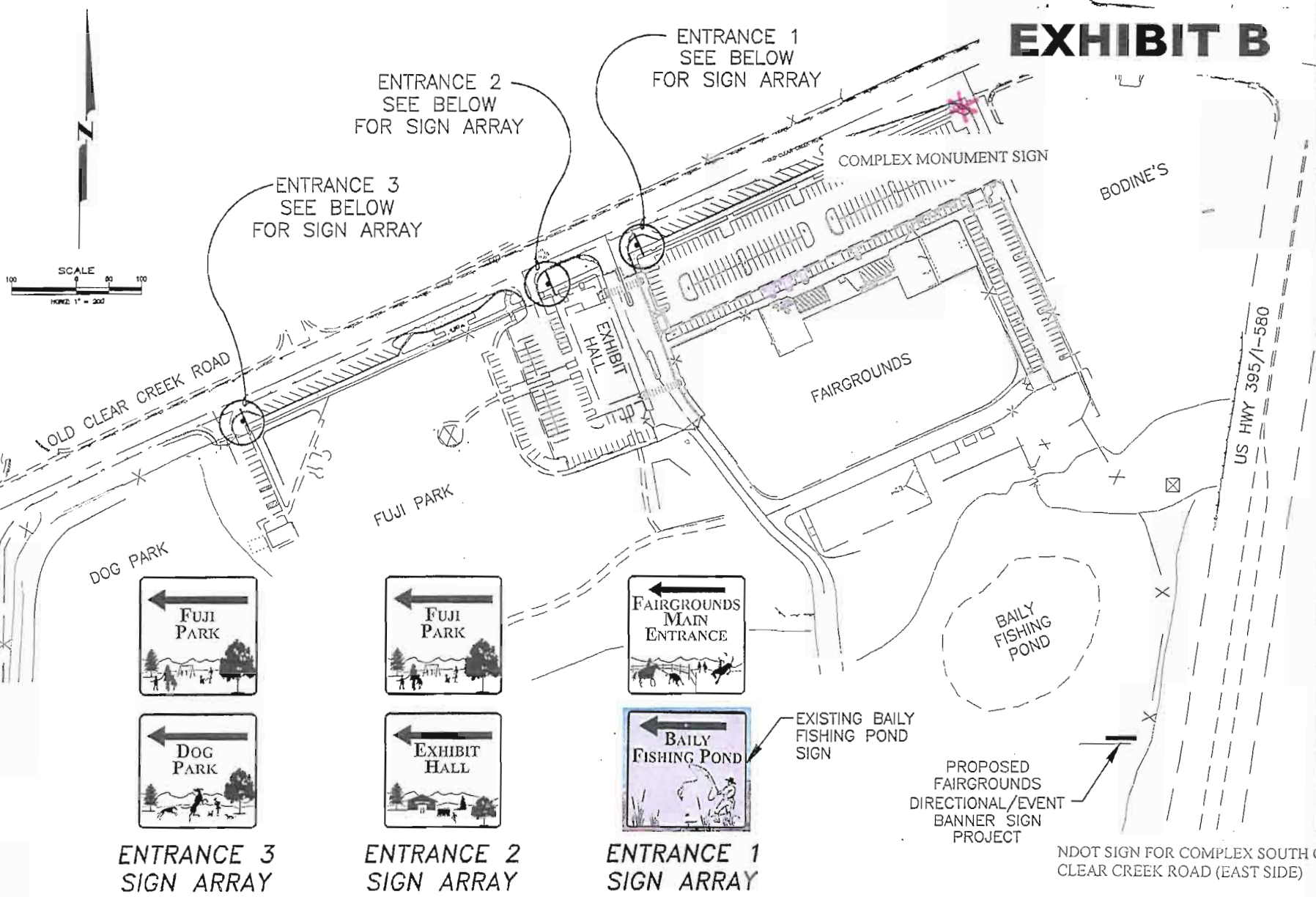
\*\*Public Record Correction: The NDOT traffic records information Web site shows the following traffic counts for 2012:

- 18,000 AADT at downtown banner
- 7,500 AADT on Old Clear Creek Road at the west entrance to Fuji Park
- 49,000 AADT on US 395 approximately .2 miles north of the intersection with Highway 50
- 36,000 AADT on US 395 approximately .25 miles south of Topsy Lane

City staff believes the difference between the last two AADT counts is mostly accounted for by the folks heading west of Hwy 50 to go to the lake; so, the 36,000 number is probably best to use.

NDOT SIGN FOR COMPLEX NORTH OF OLD CLEAR CREEK ROAD (WEST SIDE)

# EXHIBIT B



ENTRANCE 3  
SIGN ARRAY

ENTRANCE 2  
SIGN ARRAY

ENTRANCE 1  
SIGN ARRAY

NDOT SIGN FOR COMPLEX SOUTH OF OLD CLEAR CREEK ROAD (EAST SIDE)

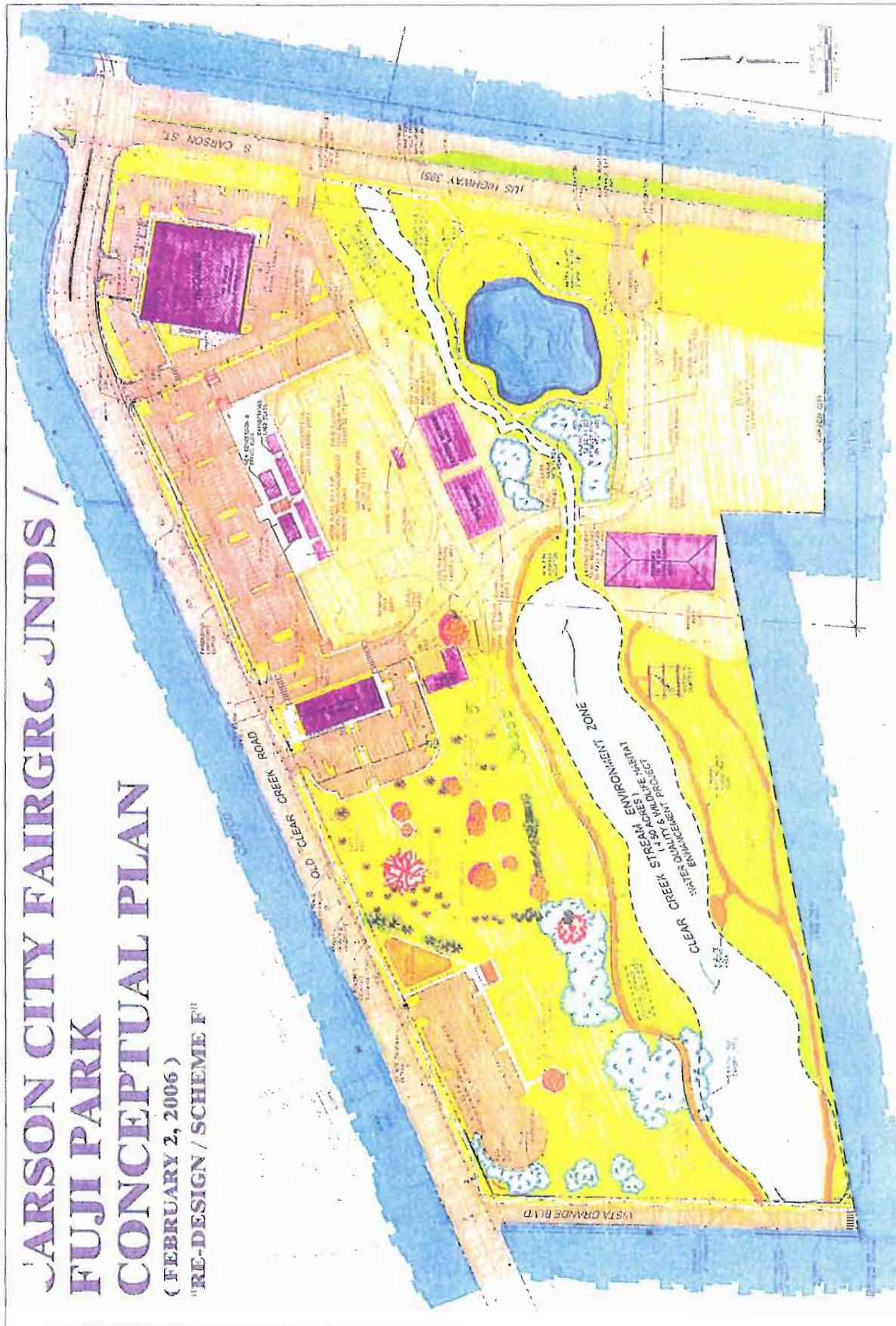
## CARSON CITY FAIRGROUNDS DIRECTIONAL SIGNS SITE PLAN

H:\PROJECTS\Fuji Park LED Sign\dwg\Directional Sign Site Plan.dwg: 1/15/14



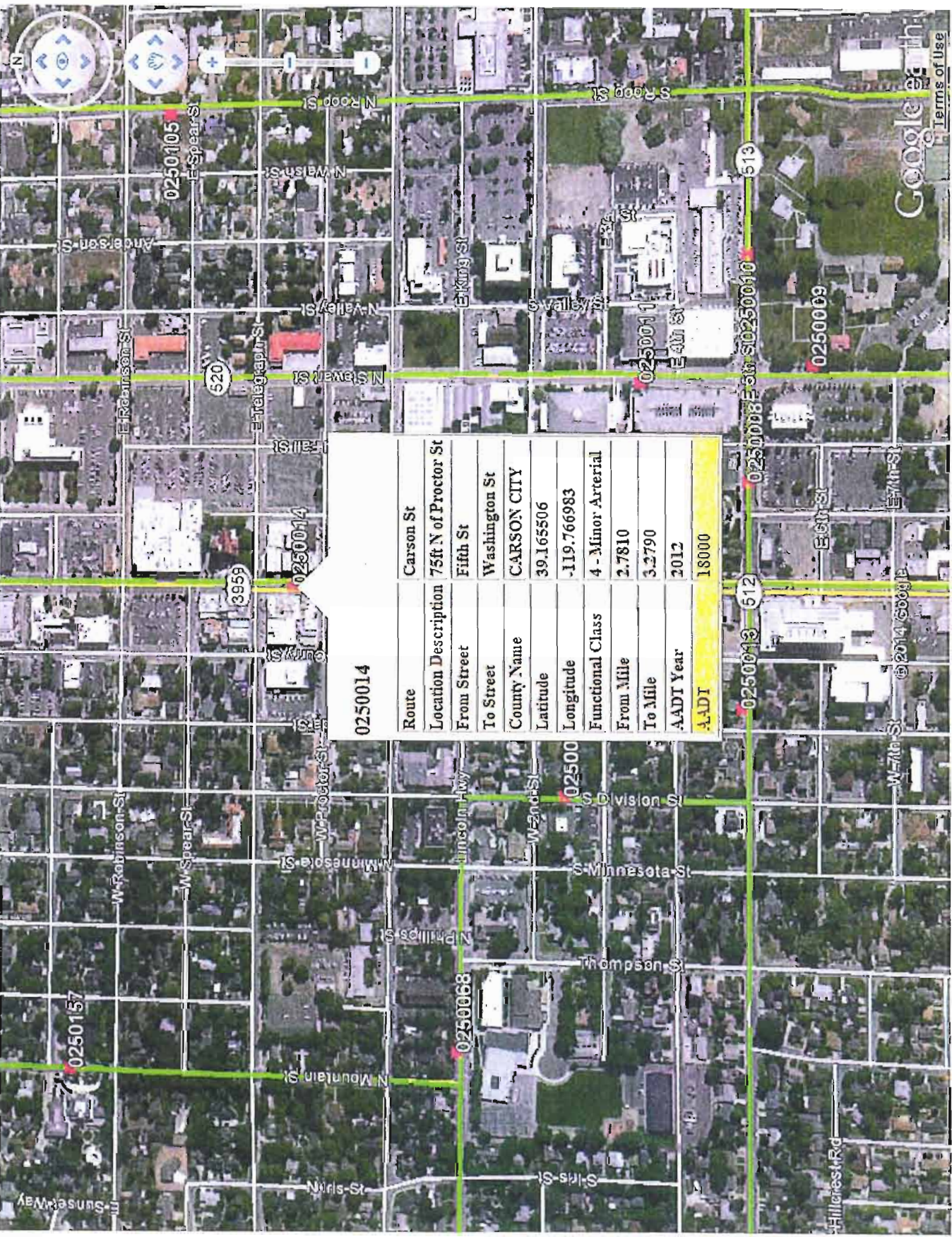
# CARSON CITY FAIRGRC JNDS / FUJI PARK CONCEPTUAL PLAN

( FEBRUARY 2, 2006 )  
"RE-DESIGN / SCHEME F"



Carson City Fairgrounds / Fuji Park User Coalition approved Conceptual Plan on February 2, 2006





Reports:  
Hourly

Station Data  
Average  
Year

- 2000
- 2001
- 2002
- 2003
- 2004
- 2005
- 2006
- 2007
- 2008
- 2009
- 2010
- 2011
- 2012

Print AADT

Stat  
Station  
Route  
Location  
From Cro:  
To Cross  
Functiona  
Latitude  
Longitude  
Lat Decim  
Lon Decim  
Print Stat  
Print Stat

<b>0250014</b>	
Route	Carson St
Location Description	75ft N of Proctor St
From Street	Fifth St
To Street	Washington St
County Name	CARSON CITY
Latitude	39.165506
Longitude	-119.766983
Functional Class	4 - Minor Arterial
From Mile	2.7810
To Mile	3.2790
AADT Year	2012
AADT	18000

Address





Zoom to Area:

Nevada

-OR-

Zoom to Count Station:

- 0250132
- 0250133
- 0250134
- 0250139
- 0250140
- 0250141
- 0250142

-OR-

Search for a Station:

0010002

Find

Show NDOT Data

Permanent Count Stations - All

- AADT 0 - 2500
- AADT 2501 - 5000
- AADT 5001 - 10000
- AADT 10001 - 25000
- AADT 25001 - 50000
- AADT 50001+

Temporary Count Stations - ALL

- AADT 0 - 2500
- AADT 2501 - 5000
- AADT 5001 - 10000
- AADT 10001 - 25000
- AADT 25001 - 50000
- AADT 50001+

Show Information Balloon

Address Lookup:

Street:

City:

State: NV

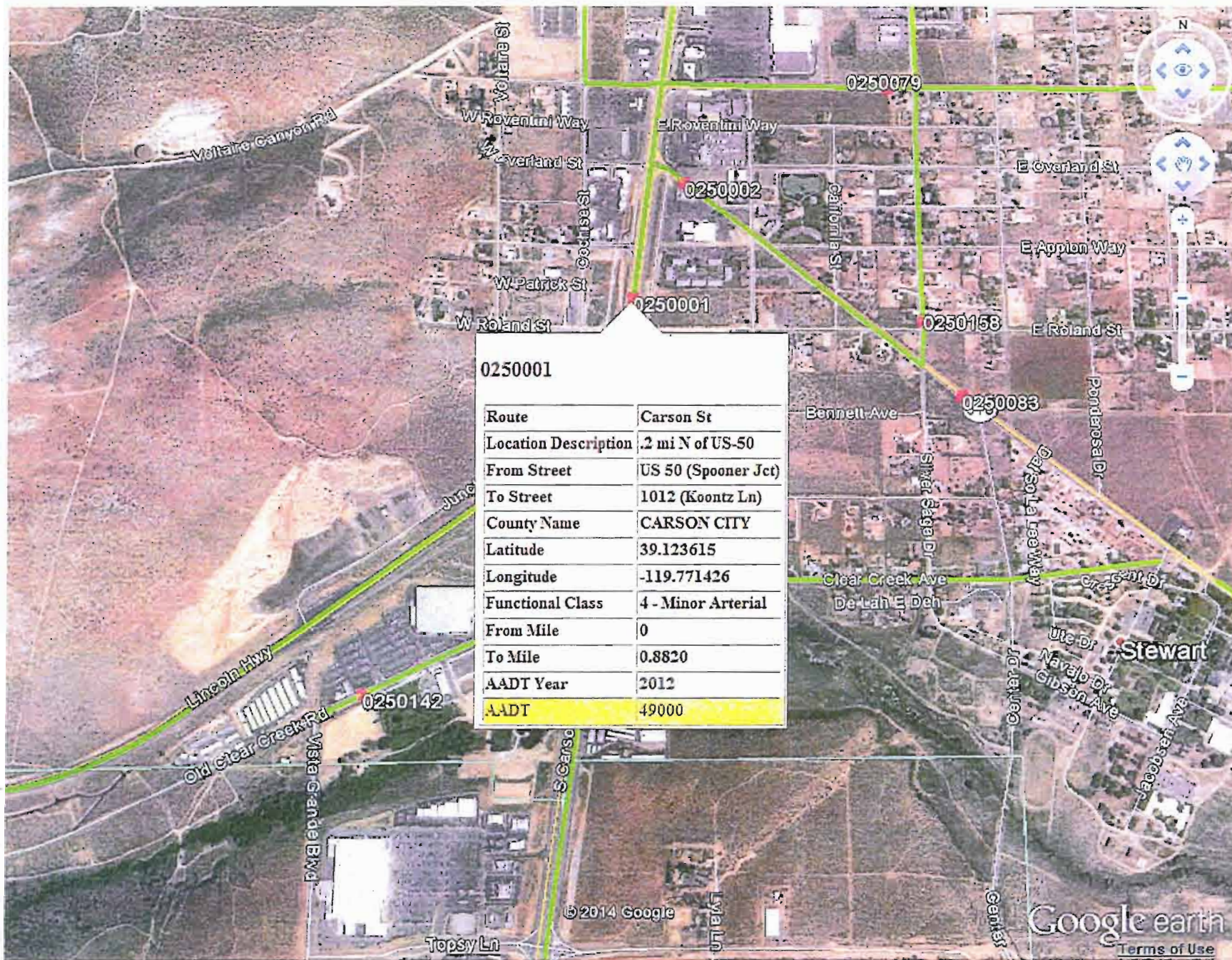
Find Address



0250142	
Route	Old Clear Creek Rd
Location Description	.25 mi W of US-395
From Street	Industrial Rd.
To Street	US-395
County Name	CARSON CITY
Latitude	39.115277
Longitude	-119.778525
Functional Class	6 - Minor Collector
From Mile	1.2510
To Mile	1.6590
AADT Year	2012
<b>AADT</b>	<b>7500</b>

395 S., S. of Best Buy





**0250001**

Route	Carson St
Location Description	.2 mi N of US-50
From Street	US 50 (Spooner Jct)
To Street	1012 (Koontz Ln)
County Name	CARSON CITY
Latitude	39.123615
Longitude	-119.771426
Functional Class	4 - Minor Arterial
From Mile	0
To Mile	0.8820
AADT Year	2012
AADT	49000

Reports:  
Hourly

Station Data I  
Average #  
Year

- 2000
- 2001
- 2002
- 2003
- 2004
- 2005
- 2006
- 2007
- 2008
- 2009
- 2010
- 2011
- 2012
- 2013

Print AADT

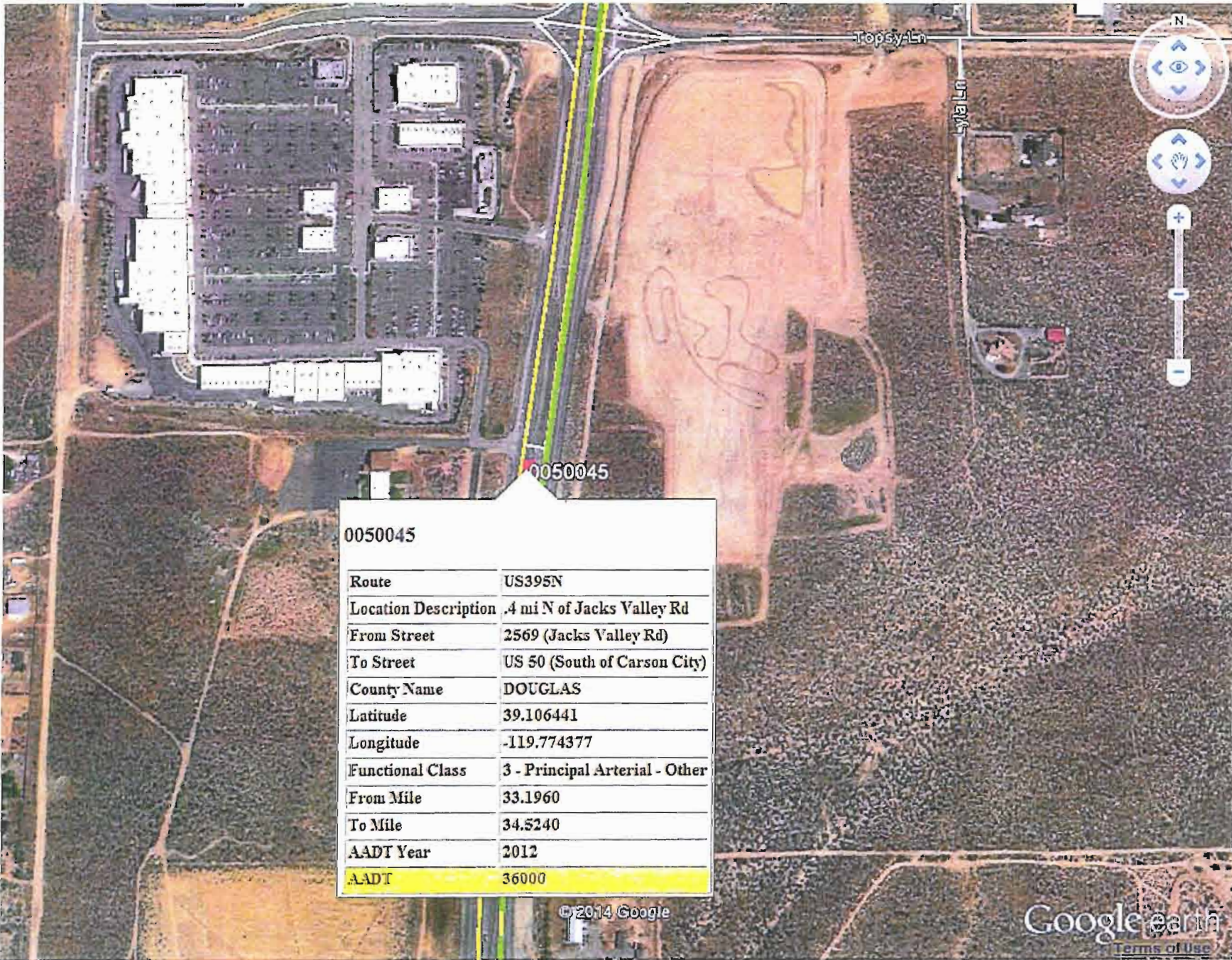
Station  
Route  
Location  
From Cross  
To Cross St  
Functional  
Latitude  
Longitude  
Lat Decim  
Lon Decim

Print Station I

Print Station I

Address





**0050045**

Route	US395N
Location Description	.4 mi N of Jacks Valley Rd
From Street	2569 (Jacks Valley Rd)
To Street	US 50 (South of Carson City)
County Name	DOUGLAS
Latitude	39.106441
Longitude	-119.774377
Functional Class	3 - Principal Arterial - Other
From Mile	33.1960
To Mile	34.5240
AA DT Year	2012
AA DT	36000



Reports:  
Hourly

Station Data  
Average  
Year

- 2000
- 2001
- 2002
- 2003
- 2004
- 2005
- 2006
- 2007
- 2008
- 2009
- 2010
- 2011
- 2012
- 2013

**Print AADT**

Station  
Route  
Location  
From Cro-  
Street  
To Cross  
Functiona  
Class  
Latitude  
Longitude  
Lat Decim  
Lon Decim

**Print Station**

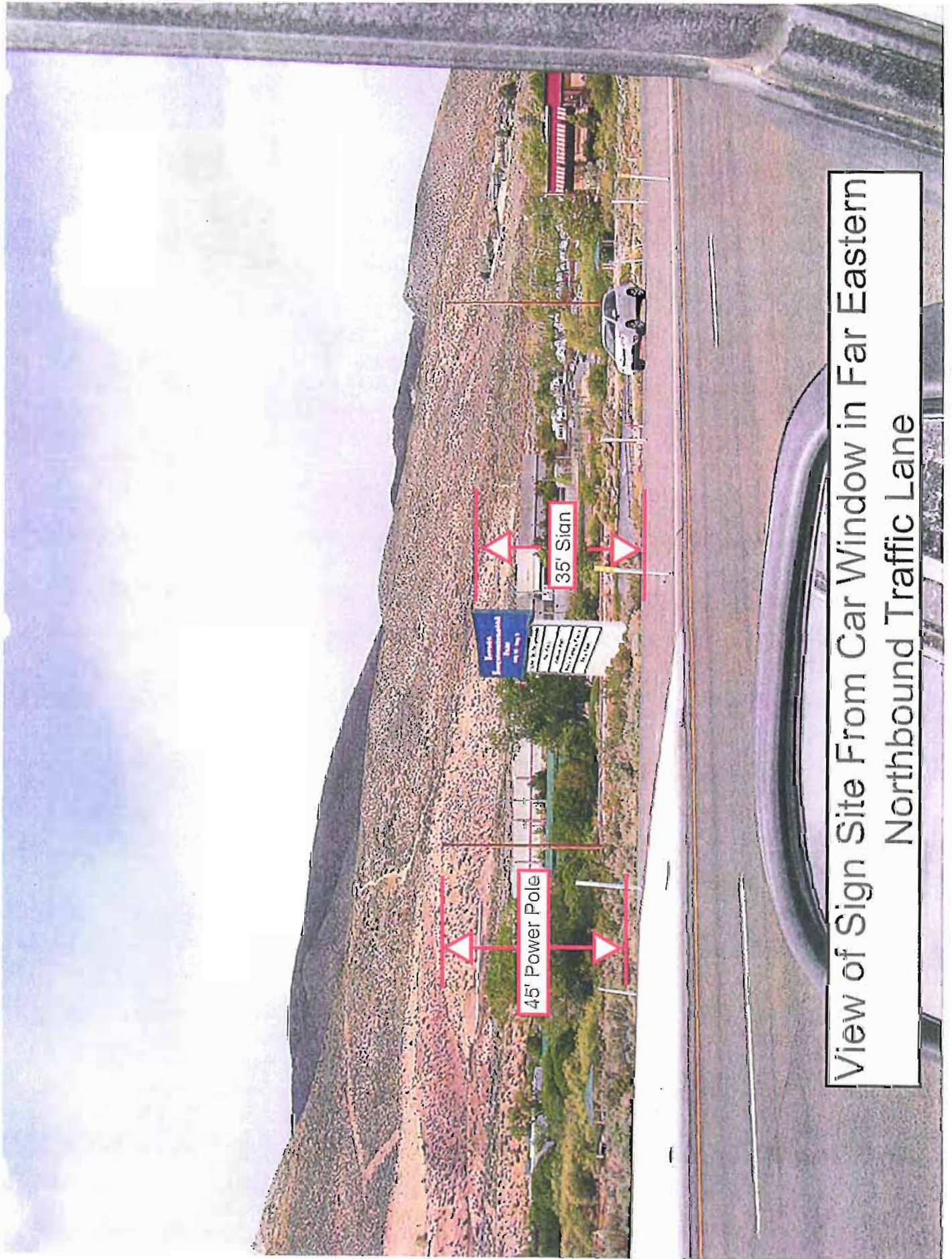
**Print Station**

Address

© 2014 Google

Google Earth  
Terms of Use

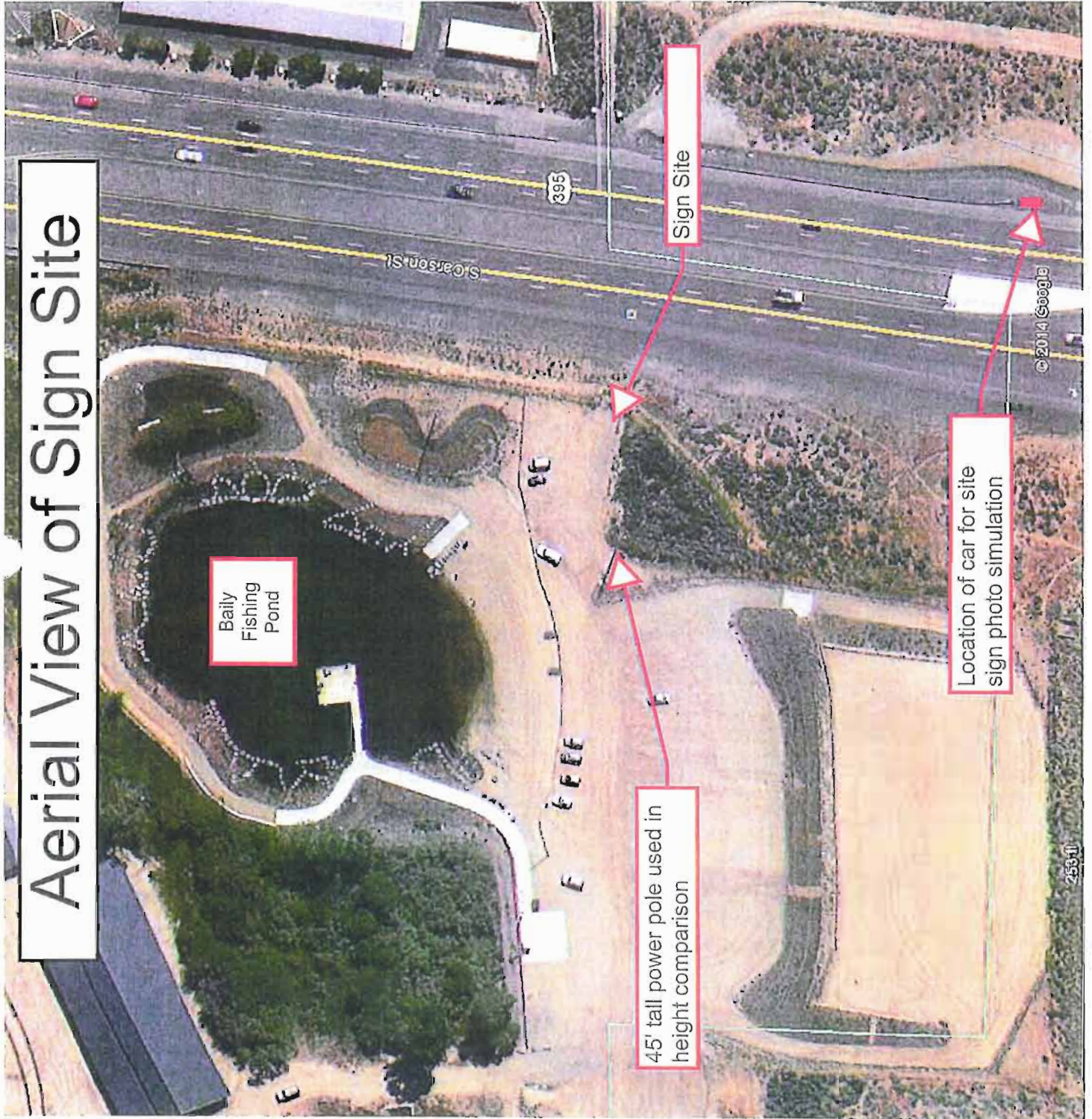




View of Sign Site From Car Window in Far Eastern Northbound Traffic Lane



# Aerial View of Sign Site



Baily Fishing Pond

45' tall power pole used in height comparison

Sign Site

Location of car for site sign photo simulation

© 2014 Google

255-11



Project Name FUTI SIGN - POLE HEIGHT

Application Number \_\_\_\_\_

Notes By TC

Date 5/21/14 Sheet 1 of 1



$$M = \frac{22.5 - 13.9}{50 - 25} = 0.344$$

$$0.344 = \frac{P - 13.9}{15 - 25}$$

$$P = 0.344(15 - 25) + 13.9$$

$$P = 45.1'$$

