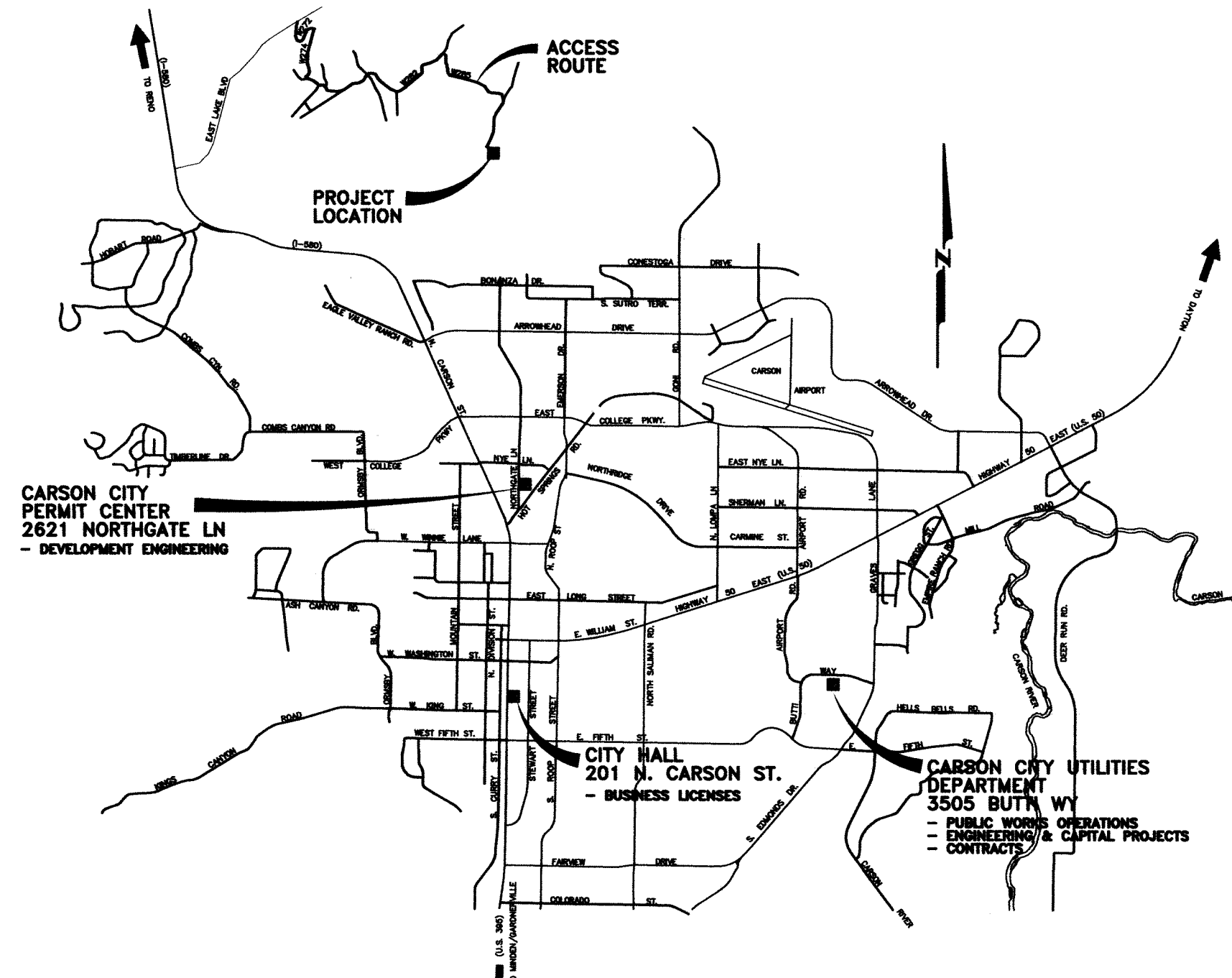


SUGARLOAF COMMUNICATIONS SITE

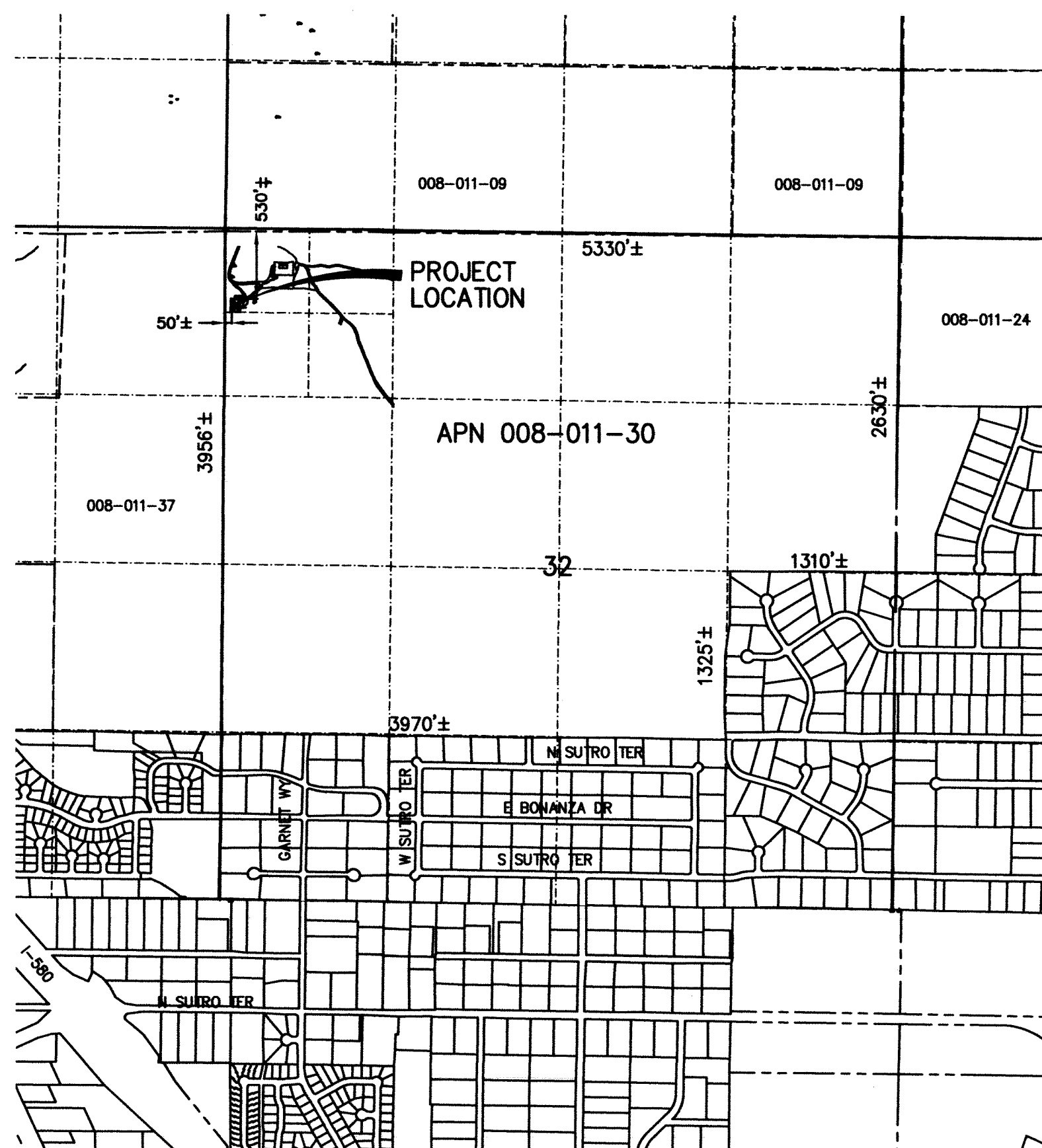
250 CONESTOGA DRIVE

CARSON CITY, NEVADA



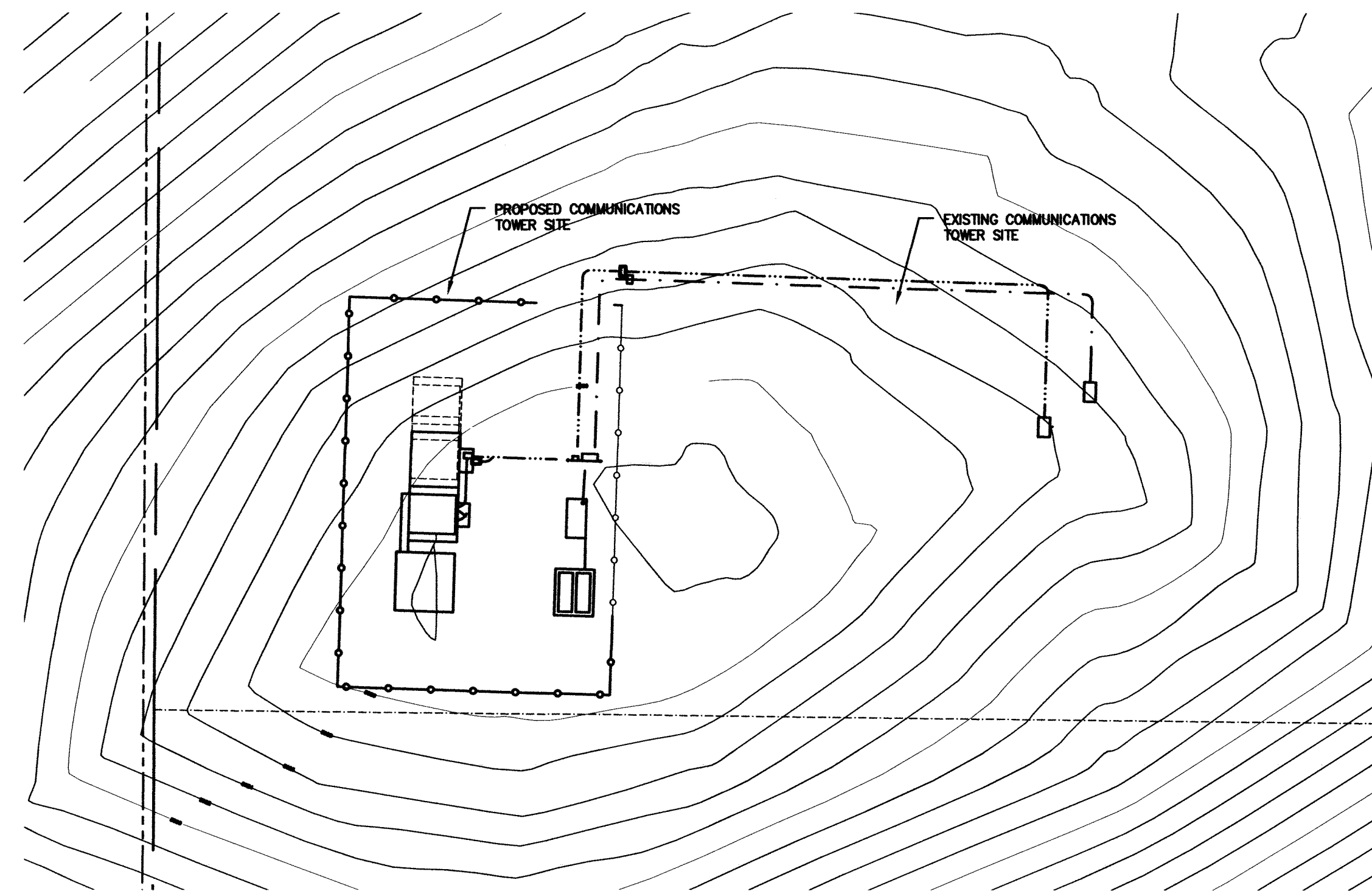
VICINITY MAP

N.T.S.



PROJECT LOCATION

N.T.S.



PROPOSED SITE

N.T.S.

APPLICANT:

CARSON CITY PUBLIC WORKS DEPT.
OPERATIONS DIVISION
3505 BUTTI WAY
CARSON CITY, NV 89701
DARREN ANDERSON (775) 283-7584

OWNER:

USA / BLM
LEASE HOLDER : CARSON CITY

REQUEST:

SPECIAL USE PERMIT FOR CONSTRUCTION
OF NEW COMMUNICATIONS TOWER

LOCATION:

250 CONESTOGA DR.
N/W 1/4 OF THE NW 1/4 OF SEC. 32
T 16 R 20 M.D.B. & M.

PARCEL NUMBER:

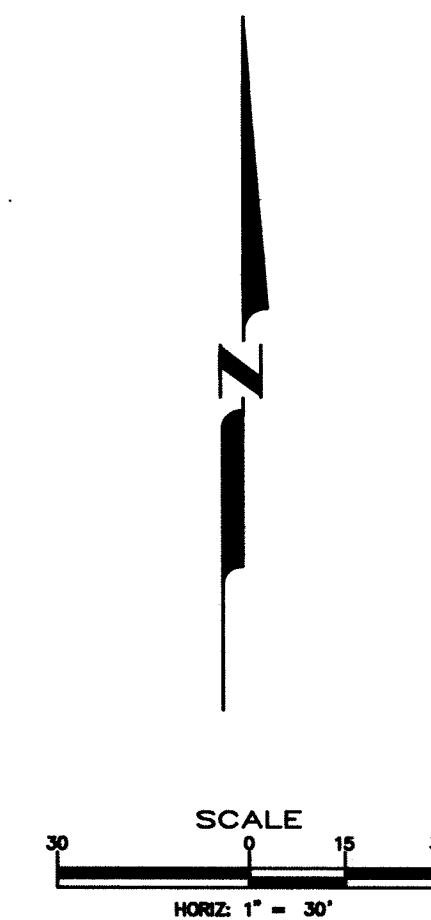
008-011-30

ZONING:

PR - PUBLIC REGIONAL

SHEET INDEX

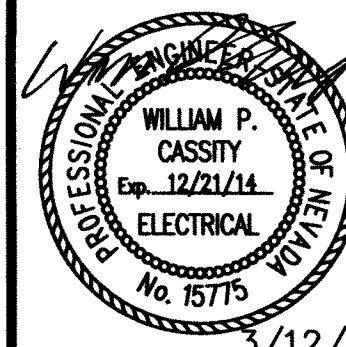
- 1 TITLE SHEET
- 2 PANEL PLAN & ELEVATIONS, SINGLE LINE
DIAGRAM & LOAD CALCS
- 3 UTILITY & GROUNDING PLAN
- 4 TYPICAL ELECTRICAL DETAILS



DESIGNED BY: WFC
DRAWN BY: WFC
CHECKED BY: WFC
DWG NO.:
SCALE (HORIZ): AS SHOWN
SCALE (VERT):
PLOT DATE:

**CARSON CITY
PUBLIC WORKS DEPARTMENT**

3505 BUTTI WAY CARSON CITY, NEVADA 89701
PH: 887-2355 FAX: 887-2112



3/12/14

REV.	DATE	DESCRIPTION	BY	APP'D

FARR WEST
ENGINEERING

5442 LONGLEY LANE, SUITE B
CARSON CITY, NV 89701
PHONE: (775) 851-4788
FAX: (775) 851-0766

SUGARLOAF COMM SITE
250 CONESTOGA DRIVE

TITLE SHEET

SHEET
1
OF
4

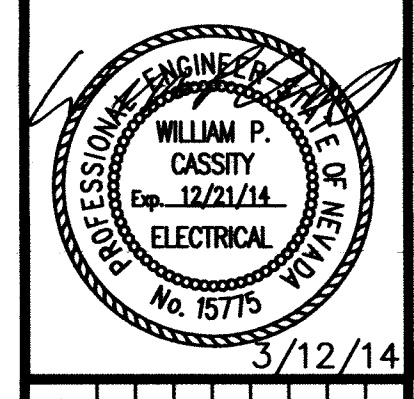
P:\Client Projects\Carson City, City of 115\0818 Carson City Electrical Design\115\0818-CARSON PUBLIC WORKS-SUGARLOAF-ELECTRICAL.dwg

CONDUIT & WIRE SCHEDULE			
RUN	CONDUIT (1)	WIRE	DESCRIPTION
Δ	4" PVC-40	4-NVE SUPPLIED CONDUCTORS	FEEDER FOR 200AMP/240V SERVICE FROM NVE TRANSFORMER TO METER PANEL
Δ	2" RMC-PVC/PVC-40	(4)-3/0 AWG 1/0 AWG	FEEDER FROM METER PANEL TO GENERATOR ATS
Δ	2" RMC-PVC/PVC-40	-	TELCO/DATA TO BLDG 1
Δ	2" RMC-PVC/PVC-40	-	TELCO/DATA TO BLDG 2
Δ	2" RMC-PVC/PVC-40	-	TELCO/DATA TO BLDG 3
Δ	2" RMC-PVC/PVC-40	(4) 3/0 & 1/0 GND	LP TO BLDG 1
Δ	(2) 2" RMC-PVC/PVC-40	PULLROPE	LP TO BLDG 2 & 3 (F)
Δ	(2) 4" PVC-40	PULLROPE	ATT SERVICE
Δ	1/2" x 8" GROUND ROD	CU ROD	GROUNDING ROD FOR EQUIPMENT, BONDED TO FRAMEWORK
Δ	3/4" RMC-PVC	1/0 CU	METER PANEL GROUND
Δ	2.5" RMC-PVC/PVC-40/0	(4) 3/0 & 1/0 GND	ATS TO GENSET - POWER
Δ	1 1/2" RMC-PVC/PVC-40/0	(4) #10 & #10 GND (6) #12 & #12 GND	ATS TO GENSET - HTR/BATT
Δ	2" RMC-PVC/PVC-40/0	PULL ROPE	GENSET TO BUILDING
Δ	2" RMC-PVC/PVC-40/0	PULL ROPE	ATS TO GENSET

① RMC-PVC MEANS RIGID METAL CONDUIT WITH A PVC FACTORY COATING INSIDE AND OUT. ACCEPTABLE MANUFACTURERS INCLUDE OCAL, ROBROY OR PERMACOTE. THE USE OF PVC TAPE WRAPPED OR APPLIED ON RMC CONDUIT IS NOT ACCEPTABLE.

DESIGNED BY: WPC
 DRAWN BY: WPC
 CHECKED BY: WPC
 DWG NO.: AS SHOWN
 SCALE (HORIZ): AS SHOWN
 SCALE (VERT): AS SHOWN
 PLOT DATE:

CARSON CITY
 PUBLIC WORKS DEPARTMENT
 3505 BUTTI WAY CARSON CITY, NEVADA 89701
 PH: 887-2355 FAX: 887-2112

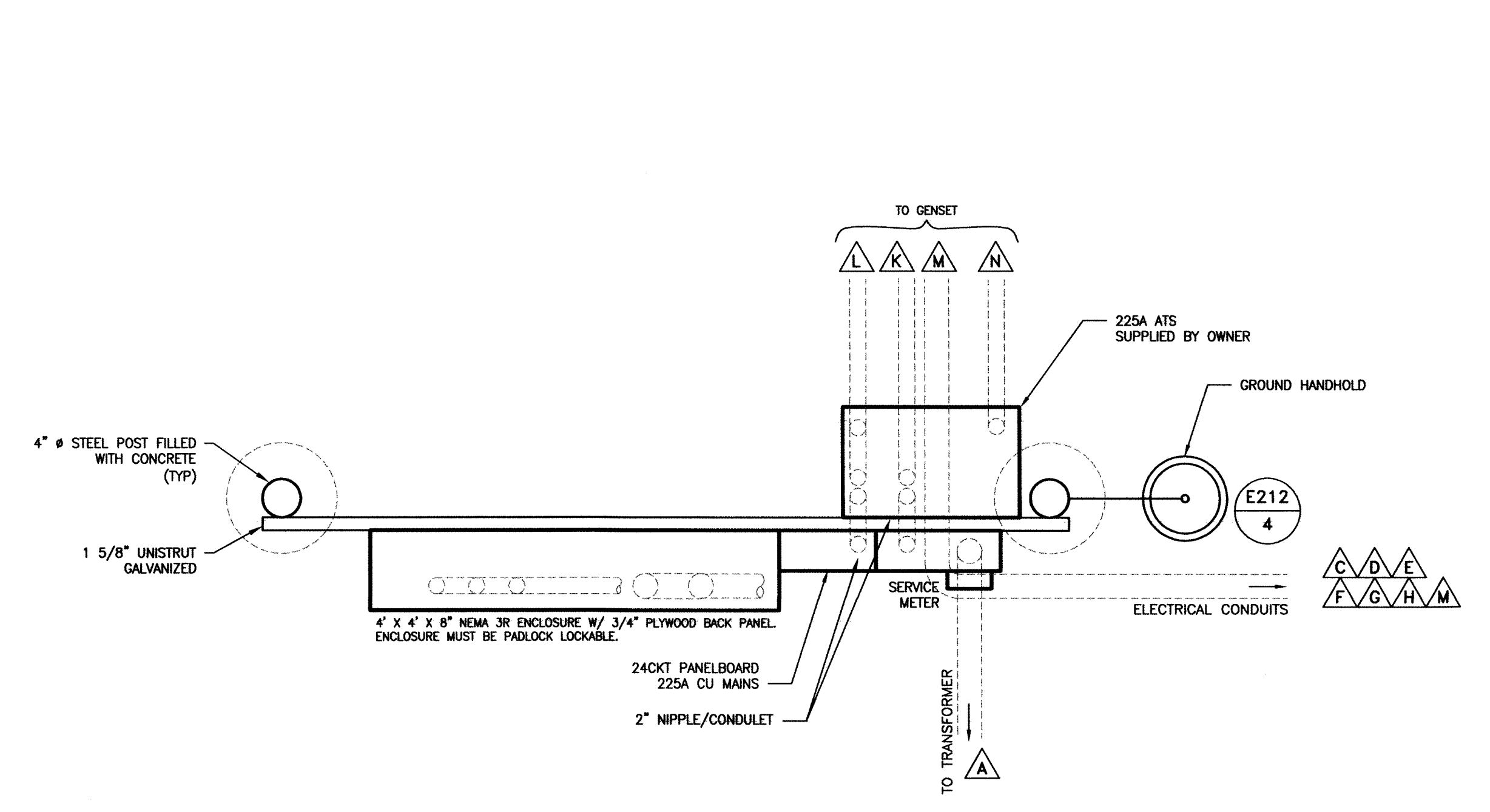


REV	DATE	DESCRIPTION	BY	APP'D
1	3-14	CHANGE TO 3Ø SERVICE	IBC	IBC

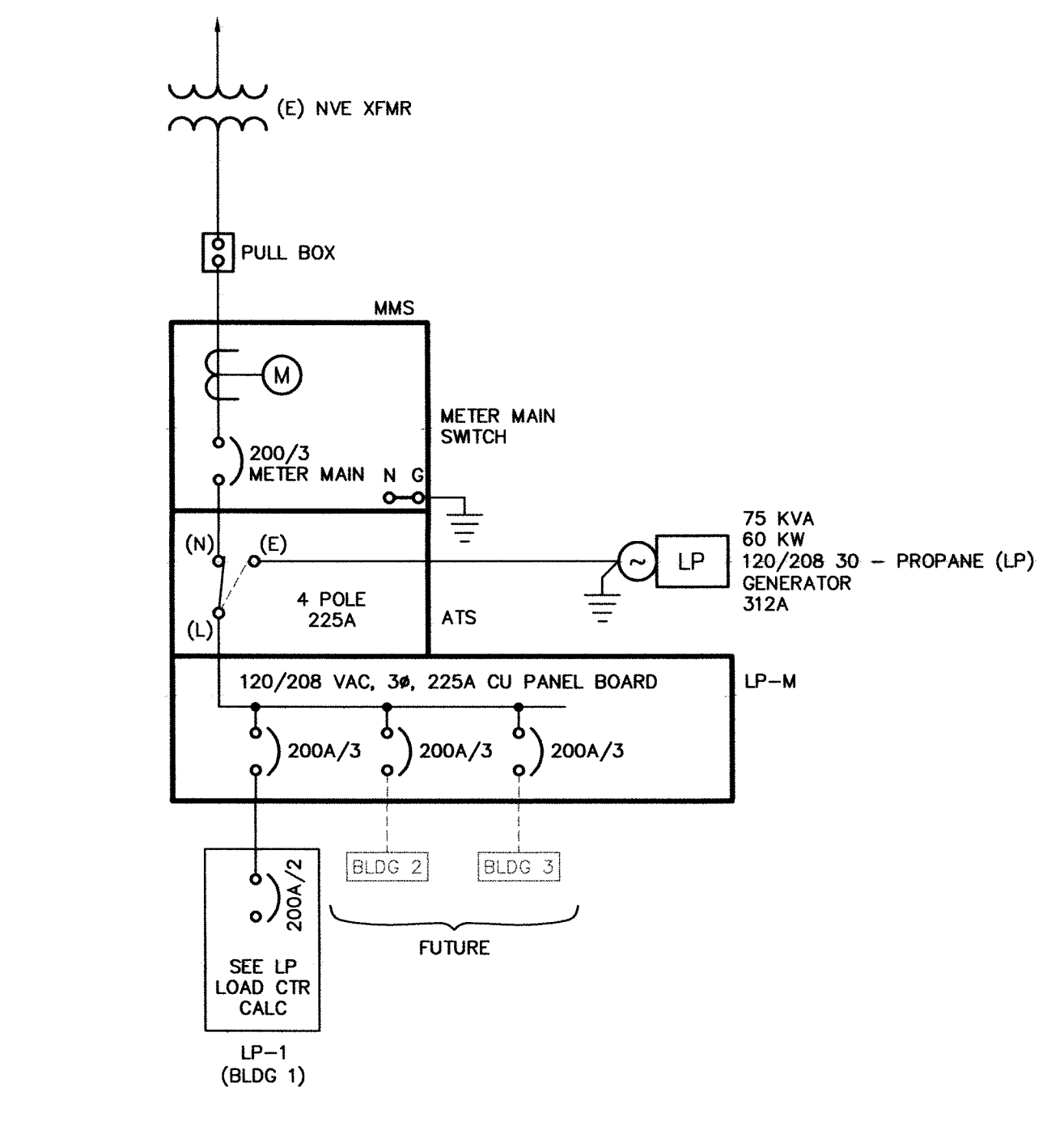
FARR WEST
 ENGINEERING
 5442 LONGLEY LANE, SUITE B
 RENO, NEVADA 89511
 PHONE: (775) 851-4788
 FAX: (775) 851-0766

SUGARLOAF COMM SITE
 250 CONESTOGA DRIVE
 PANEL PLAN & SINGLE LINE ELEVATIONS, SINGLE LINE DIAGRAM & LOAD CALCS

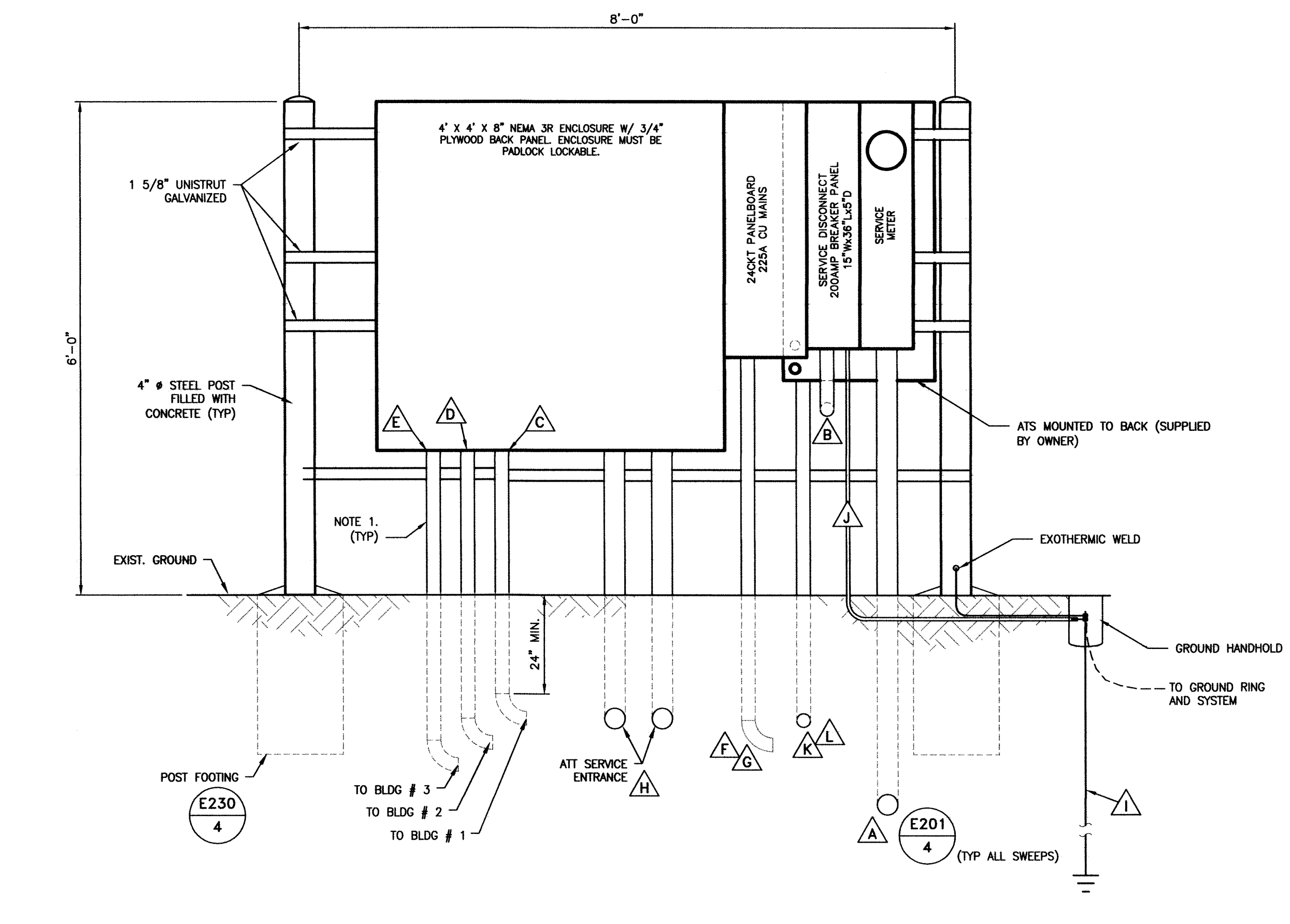
SHEET
 2
 OF
 4



METER & TELEMETRY PANEL PLAN (1)
 NOT TO SCALE



SINGLE LINE DIAGRAM (3)
 NOT TO SCALE



METER & TELEMETRY PANEL ELEVATION (2)
 LOOKING NORTH
 NOT TO SCALE

SITE LOAD CALCULATION							
LOAD CENTER: MMS / LP-M 120/240 VAC, 3 PHASE SERVICE							
FED FROM: UTILITY/ATS		CONNECTED		UTILITY		GENERATOR	
EQUIPMENT NUMBER	EQUIPMENT DESCRIPTION	LOAD (AMPS)	QTY	LOAD (KVA)	RUN QTY	RUN (KVA)	RUN (KVA)
BLDG 1	Bldg Loads per LP schedule	63.9	1	15.3	1	15.3	26.6
BLDG 2 (F)	Bldg Loads per LP schedule	63.9	1	15.3	1	15.3	26.6
BLDG 3 (F)	Bldg Loads per LP schedule	63.9	1	15.3	1	15.3	26.6
SUBTOTAL				46.00		46.00	79.7
LARGEST MOTOR @ 25%		N/A	HP			1.20	SIZE 60 KW
TOTAL						47.20	75 KVA
DIVERSITY FACTOR		100.0%					90 A
1 PHASE CURRENT		197 AMPS					
CALCULATED SERVICE SIZE		100% MAXIMUM LOAD CURRENT					106.2% LOADED
MAIN BREAKER SIZE		200 AMPS					
% MAIN BREAKER LOAD		98.3%					

LP-1 LOAD CENTER - TYPICAL OF UP TO 3 BUILDINGS										
LOCATION	MCC	VOLTAGE	TRIM FLUSH	PHASE LOADS			CB	VA	LOAD	CKT
				A	B	C				
1	LIGHTS	192	20/1	2472			40/2 (H)	2280	HVAC 20K BTU/HR	2
3	OUTLETS 1	1500	20/1		3780			2280		4
5	OUTLETS 2	1500	20/1					1200		6
7	VENTILATION	200	20/1	1400		2700	20/2	1200	100W RADIO	8
9	GFI OUTLET	180	20/1		1380			1200		10
11	SPACE / SPARE		20/1			1200	20/2	1200	100W RADIO	12
13	SPACE / SPARE		20/1	1200				1200		14
15	SPACE / SPARE		20/1		1200		20/2	1200	100W RADIO	16
17	SPACE / SPARE		20/1			0	20/1		SPACE / SPARE	18
19	SPACE / SPARE		20/1	0			20/1		SPACE / SPARE	20
21	SPACE / SPARE		20/1	0	0		20/1		SPACE / SPARE	22
23	SPACE / SPARE		20/1	0		0	20/1		SPACE / SPARE	24
25	SPACE / SPARE		20/1	0			20/1		SPACE / SPARE	26
27	SPACE / SPARE		20/1		0		20/1		SPACE / SPARE	28
29	SPACE / SPARE		20/1			0	20/1		SPACE / SPARE	30
31	SPACE / SPARE		20/1	0			20/1		SPACE / SPARE	32
33	SPACE / SPARE		20/1		0		20/1		SPACE / SPARE	34
35	SPACE / SPARE		20/1			0	20/1		SPACE / SPARE	36
37	SPACE / SPARE		20/1	0		0	20/1		SPACE / SPARE	38
39	SPACE / SPARE		20/1		0		20/1		SPACE / SPARE	40
41	SPACE / SPARE		20/1			0	20/1		SPACE / SPARE	42

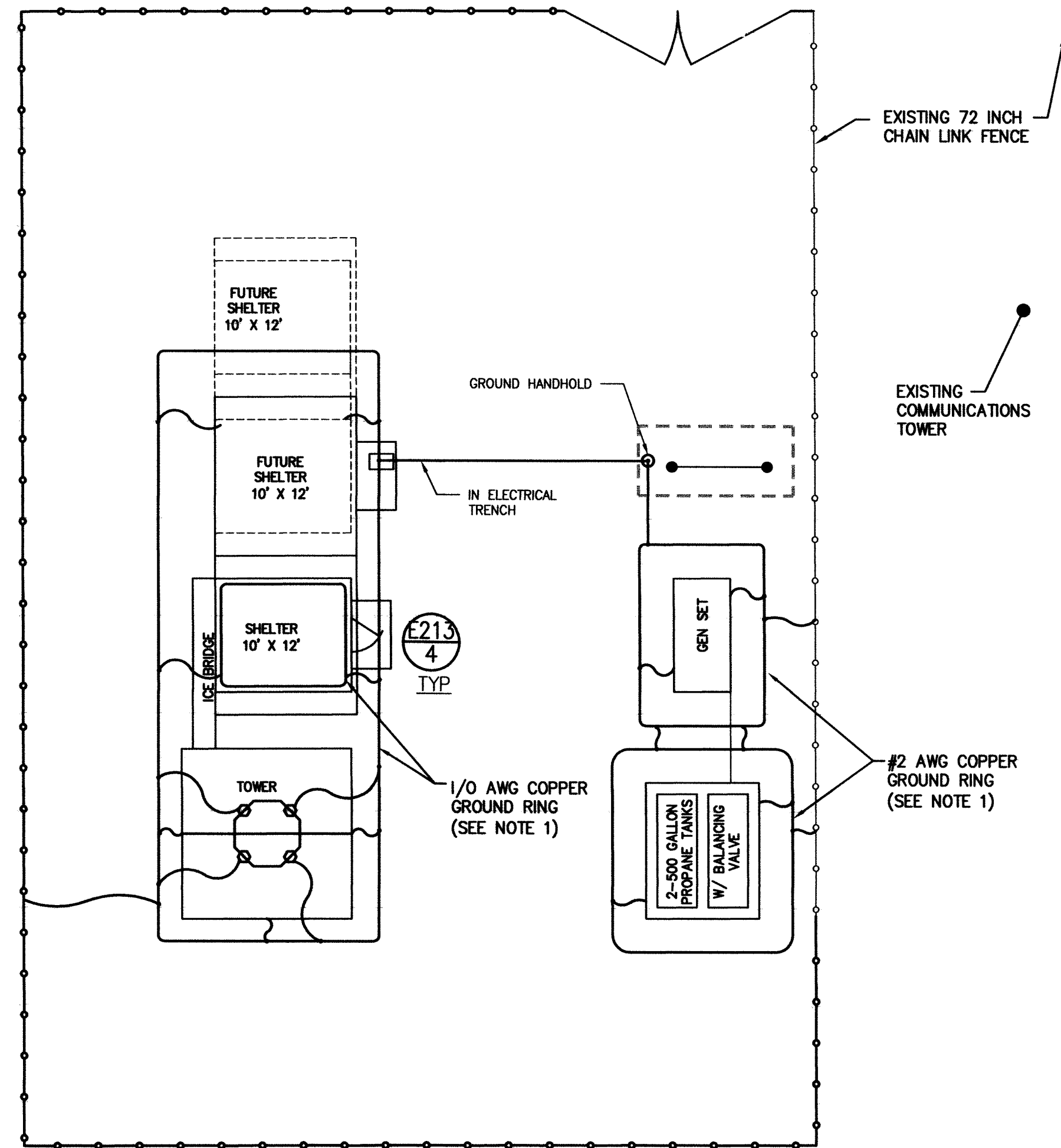
NOTES		PHASE LOADS		AVERAGE	
(L)	ALL CBs SHALL HAVE LOCKOUT PROVISIONS	5072 VA	6360 VA	3900 VA	5.1 KVA
(H)	HVAC RATED BREAKER - VERIFY ACTUAL OCPD SETTING BASED ON UNIT SELECTED	99%	124%	76%	3.6 KVA/LOAD

UTILITY DIVISION OF WORK		
RESPONSIBILITY		
	CONTRACTOR	UTILITY
POWER POLES		X
PRIMARY CONDUITS	X	
PRIMARY CONDUCTORS		X
TRANSFORMER PAD	X	
TRANSFORMER		X
BOLLARDS	X	
SECONDARY CONDUITS	X	
SECONDARY CONDUCTORS		X
TRANSFORMER CONNECTIONS		X
UTILITY METER		X
C/T ENCLOSURE		X
CURRENT AND VOLTAGE XFMRs		X
PULLBOXES / VAULTS	X	
LOAD BREAK SWITCHES	X	
X - INDICATES RESPONSIBILITY		
UTILITY INFORMATION		
UTILITY PROJECT NUMBER		NV ENERGY
POINT OF CONTACT		
ADDRESS		ONE OHM PLACE
CITY, STATE, ZIP		RENO, NV
VOICE		
FAX		
EMAIL		
TELEPHONE / DATA		
TELCO / DATA PROVIDER		
PROJECT NUMBER		
POINT OF CONTACT		
ADDRESS		
CITY, STATE, ZIP		
VOICE		
FAX		
EMAIL		

NOTES

- All work performed by the Contractor under this section must conform to the utility standards. If a conflict between the Utility standards and details shown on this plan set exist, the Utility standards and requirements shall take precedence.
- Contractor shall review the Utility Engineered Drawings prior to commencing work for the Utility service. No change orders or charges will be accepted or allowed if Contractor begins work prior to reviewing and meeting with Utility Representatives onsite.
- Contractor shall submit service entrance equipment and conduits for Utility review and acceptance prior to ordering. The approval of this equipment must be submitted to the owner as proof of acceptance by the Utility.
- The Contractor shall schedule, coordinate and attend all required inspections, tests or meetings, as required by the Utility. All work must be performed in full compliance with Utility requirements or directives. These inspections, tests and meetings are in addition to any items required under this contract but shall be covered by the Contractor.

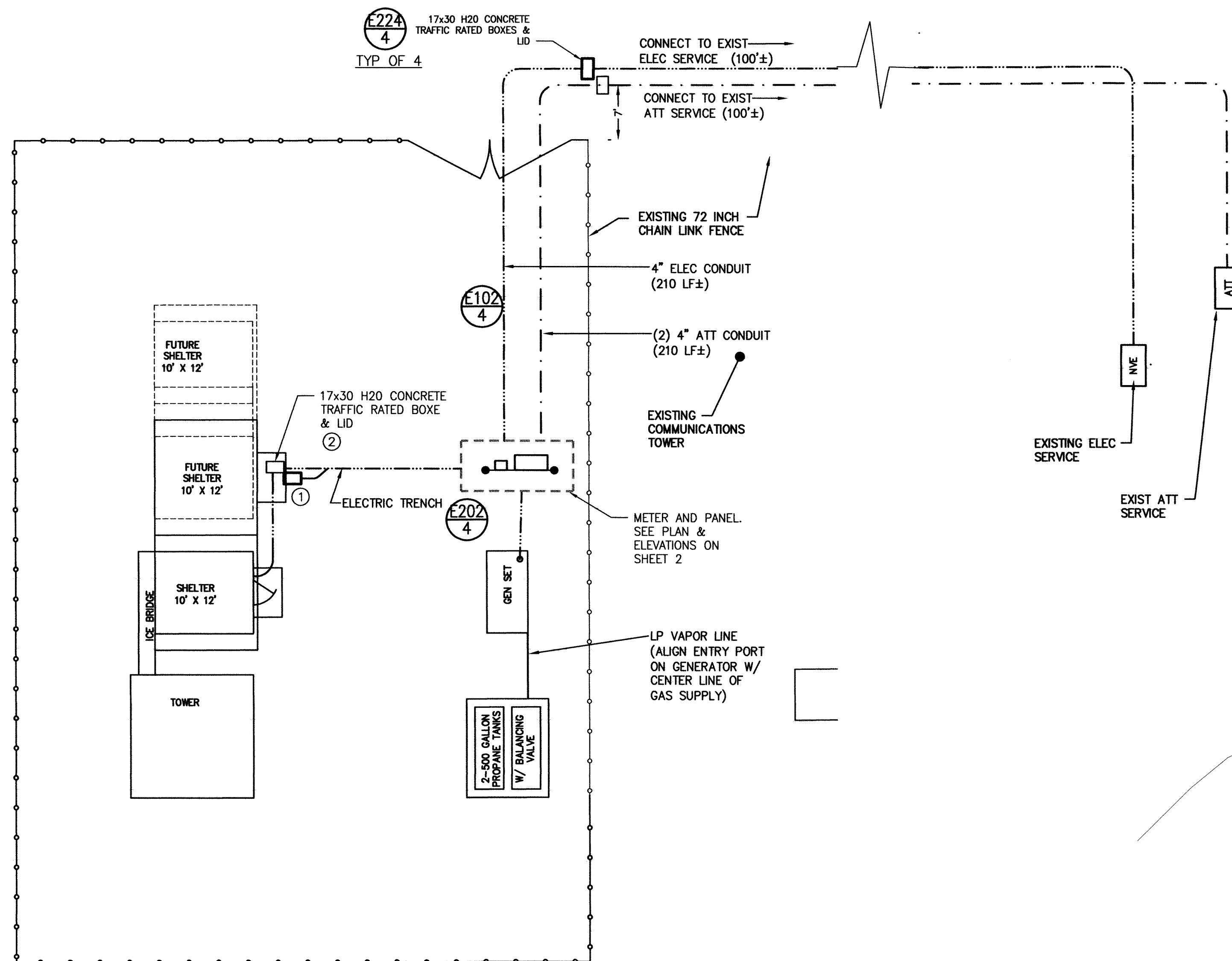
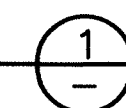
P:\Client Projects\Carson City, City of 11510888 Carson City Electrical Design\G. Dominguez\1. DMV\0888-CARSON PUBLIC WORKS\SUGARLOAF ELECTRICAL.dwg



GROUNDING NOTES:

- GROUND RING SHALL BE 1/0 AWG OR LARGER BARE COPPER CONDUCTOR BURIED AT LEAST 30 INCHES BELOW FINISHED GRADE. ONLY EXOTHERMIC WELDS SHALL BE USED BELOW GRADE.
- TOWER AND SHELTER GROUND RING SHALL BE BONDED TOGETHER IN AT LEAST TWO LOCATIONS.
- GROUND RING SHALL BE INSTALLED AT LEAST 2 FEET FROM BUILDING FOUNDATION.
- CONTRACTOR TO TAKE PHOTOS OF OPEN TRENCHES W/ GROUND WIRE & PROVIDE TO CONSTRUCTION MANAGER.

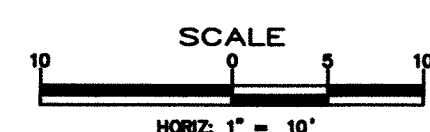
GROUNDING PLAN
SCALE: 1"=10'



NOTES:

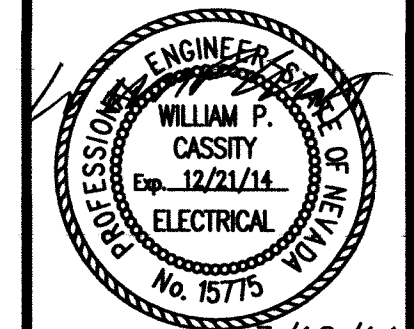
- REFER TO CONDUIT & WIRE SCHEDULE ON SHEET 2.
- SIGNAL & POWER PULL BOXES POWER CONDUITS "F" & "G". ALL OTHER CONDUITS ARE SIGNAL CONDUITS

SITE PLAN
SCALE: 1"=10'



DESIGNED BY: WPC
 DRAWN BY: WPC
 CHECKED BY: WPC
 DWG NO.: AS SHOWN
 SCALE (HORIZ): AS SHOWN
 SCALE (VERT): AS SHOWN
 PLOT DATE:

**CARSON CITY
 PUBLIC WORKS DEPARTMENT**
 3505 BUTTI WAY CARSON CITY, NEVADA 89701
 PH: 887-2355 FAX: 887-2112

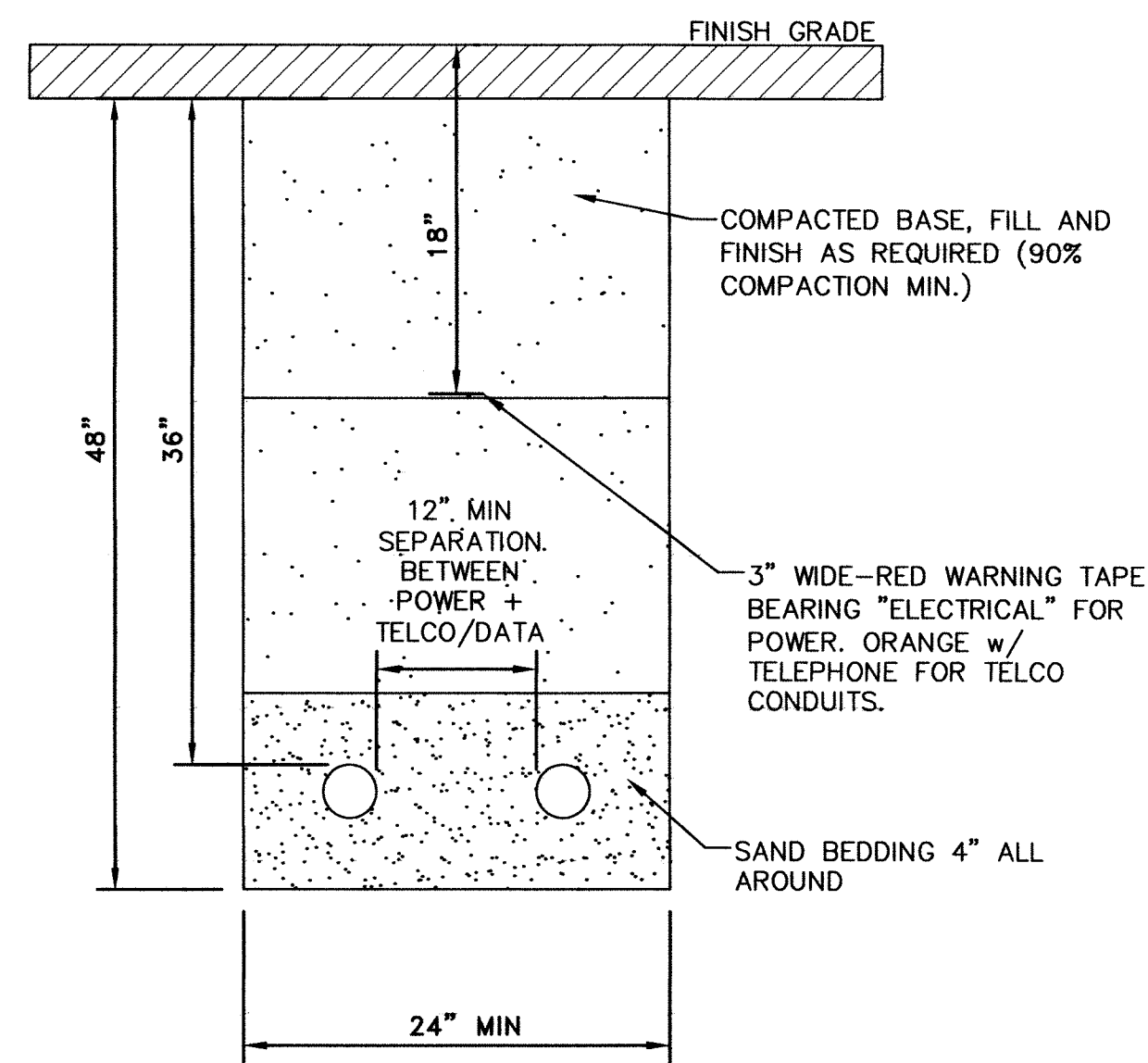


REV.	DATE	DESCRIPTION	BY	APP'D

FARR WEST
 ENGINEERING
 5442 LONGLEY LANE, SUITE B
 RENO, NEVADA 89511
 PHONE: (775) 851-4788
 FAX: (775) 851-0786

**SUGARLOAF COMM SITE
 250 CONESTOGA DRIVE**
UTILITY & GROUNDING PLAN

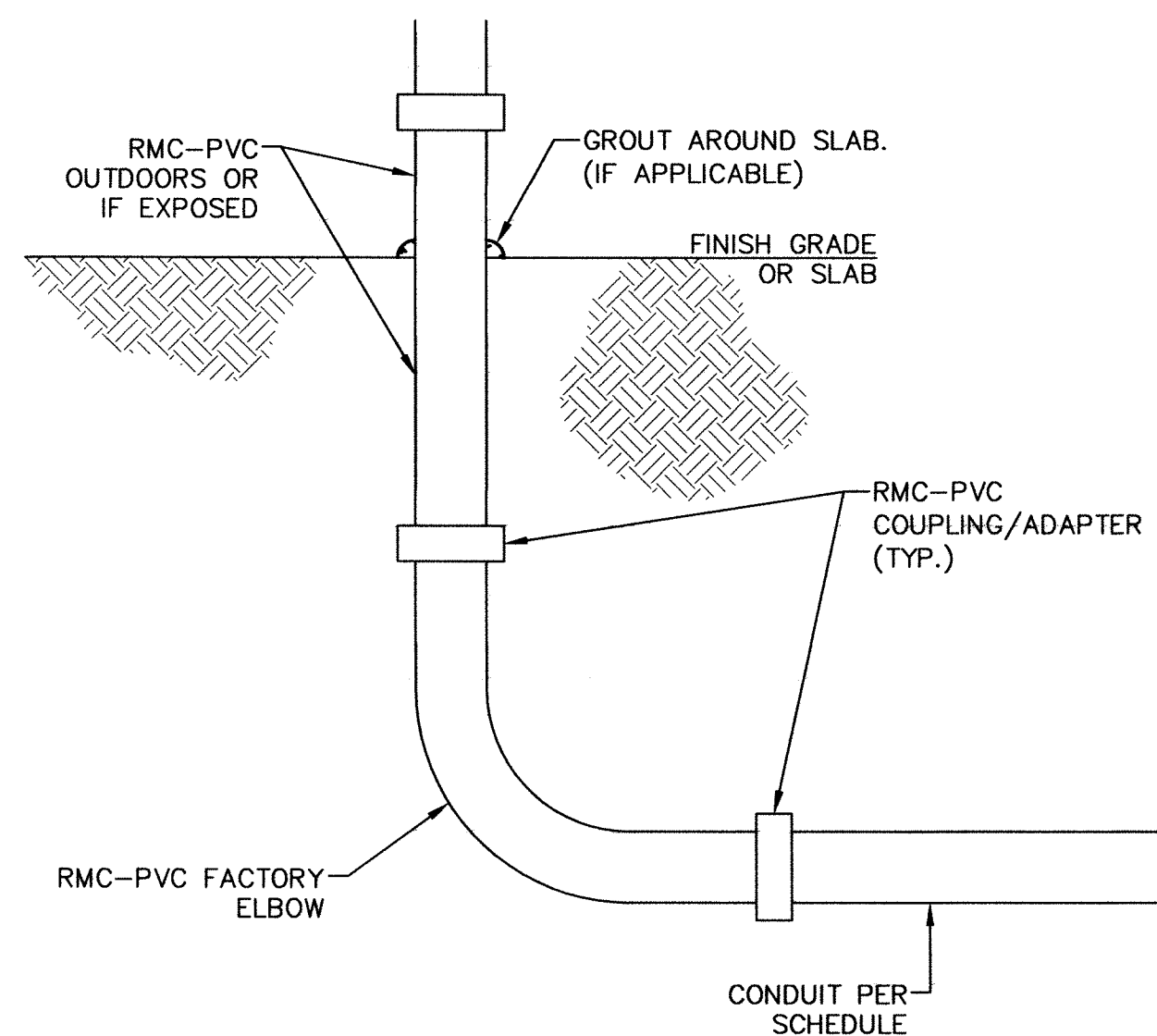
P:\Client Projects\Carson City, City of 15\0988 Carson City Electrical Design\A.G. Draught\A1.DWG\0988-CARSON PUBLIC WORKS-SUGARLOAF-ELECTRICAL.dwg



SECONDARY UTILITY CONDUITS DETAIL

SCALE = NONE

E102



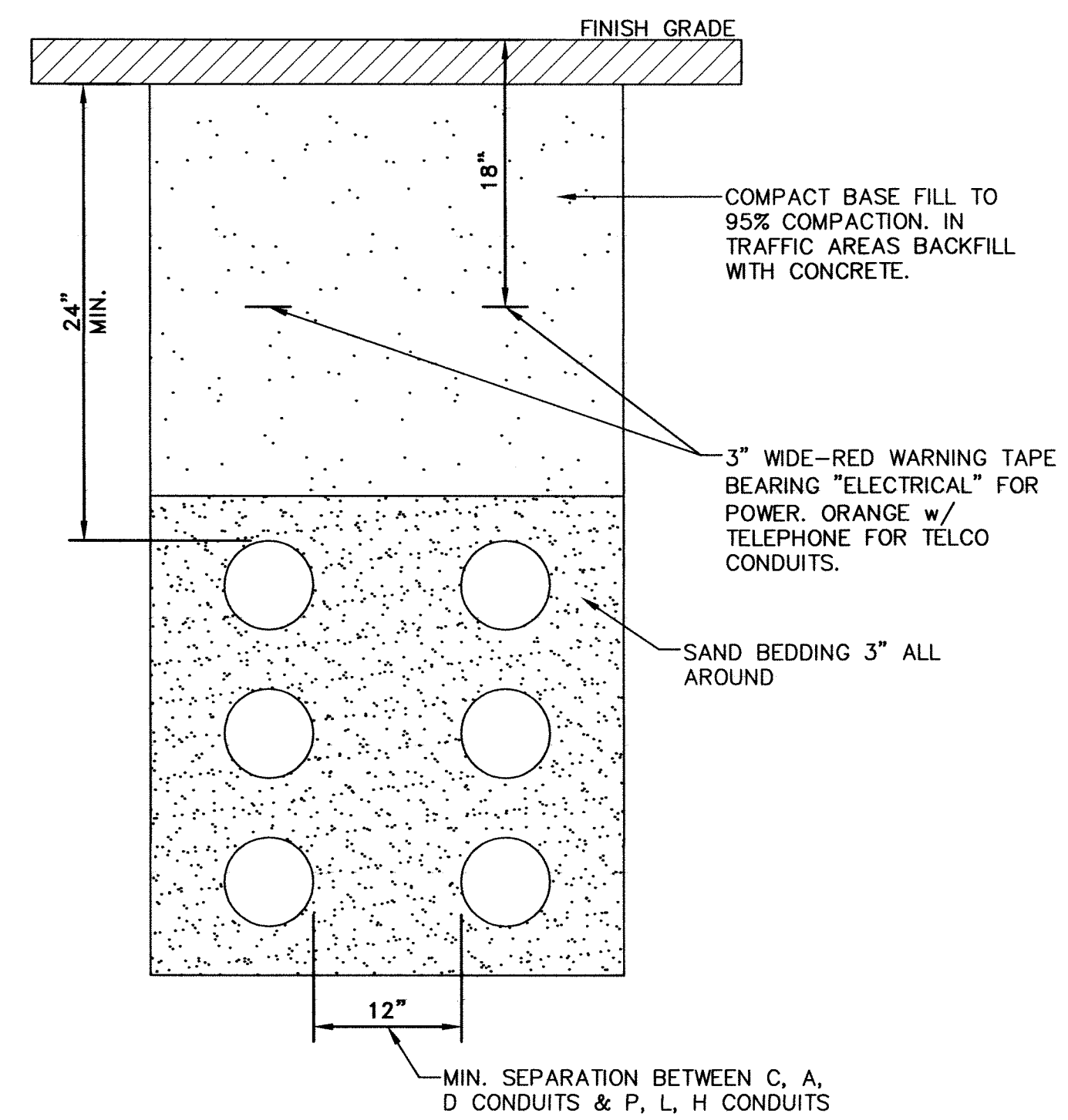
NOTES

① RMC WITH PLASTIC TAPE IS NOT ALLOWED AS A SUBSTITUTE.

EXPOSED CONDUIT TRANSITION DETAIL

SCALE = NONE

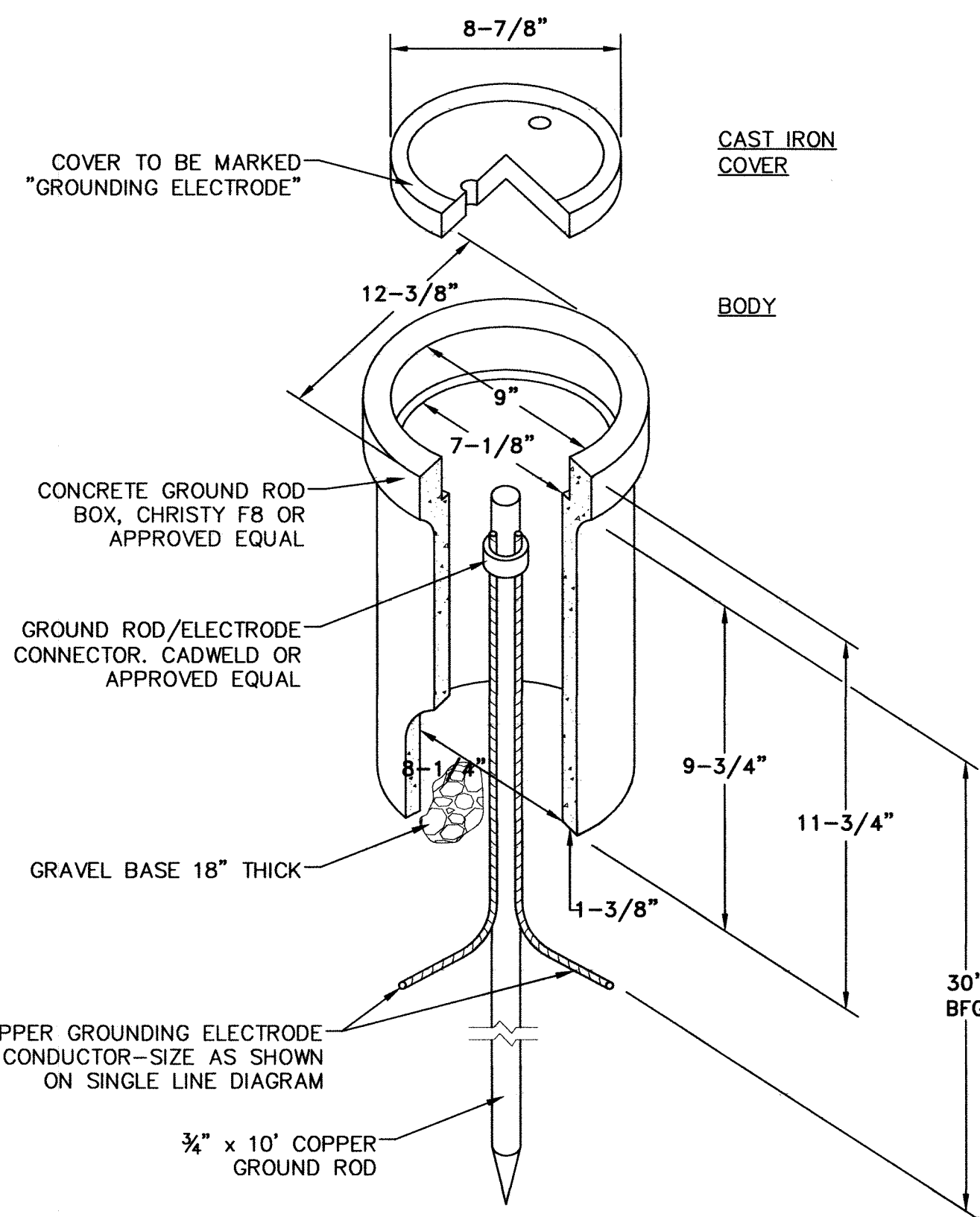
E201



TRENCH DETAIL

SCALE = NONE

E202



CONCRETE GROUND ROD HANDHOLD DETAIL

SCALE = NONE

E212

GROUNDING CONNECTION DETAIL

SCALE = NONE

E213

SMALL CONCRETE PULLBOX DETAIL

SCALE = NONE

E224

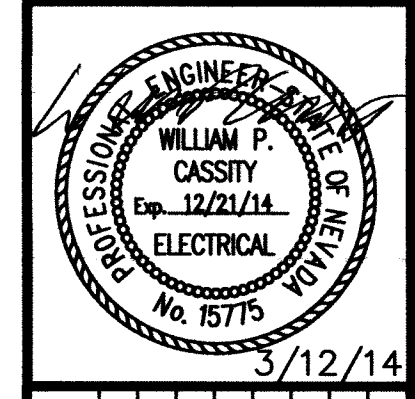
POST FOOTING DETAIL

SCALE = NONE

E230

DESIGNED BY: WFC
 DRAWN BY: WFC
 CHECKED BY: WFC
 DWG NO.:
 SCALE (HORIZ): AS SHOWN
 SCALE (VERT):
 PLOT DATE:

**CARSON CITY
 PUBLIC WORKS DEPARTMENT**
 3505 BUTTI WAY CARSON CITY, NEVADA 89701
 PH: 887-2355 FAX: 887-2112



3/12/14

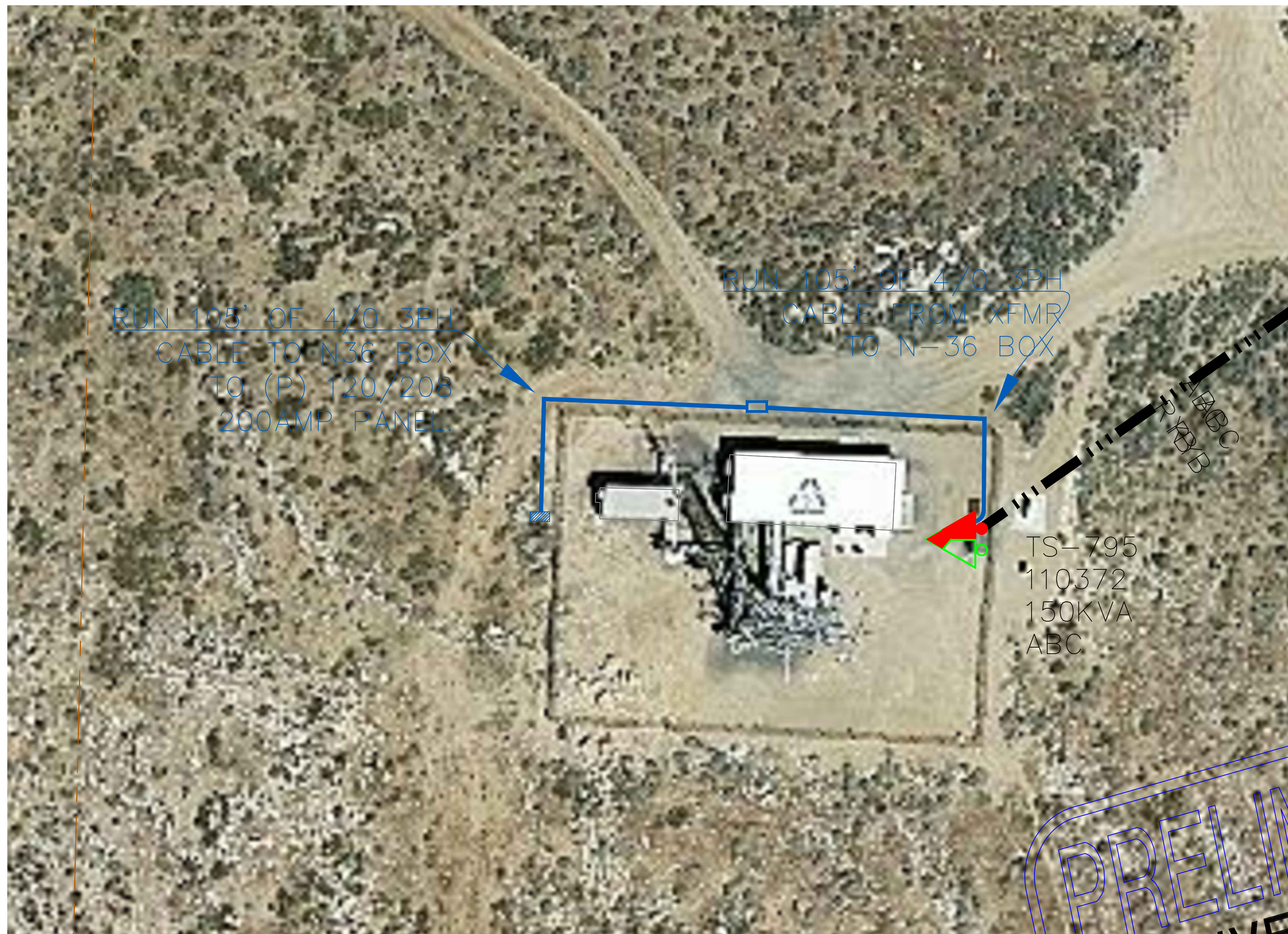
REV.	DATE	DESCRIPTION	BY	APP'D

**FARR WEST
 ENGINEERING**
 5442 LONGLEY LANE, SUITE B
 RENO, NEVADA 89511
 PHONE: (775) 851-7788
 FAX: (775) 851-0766

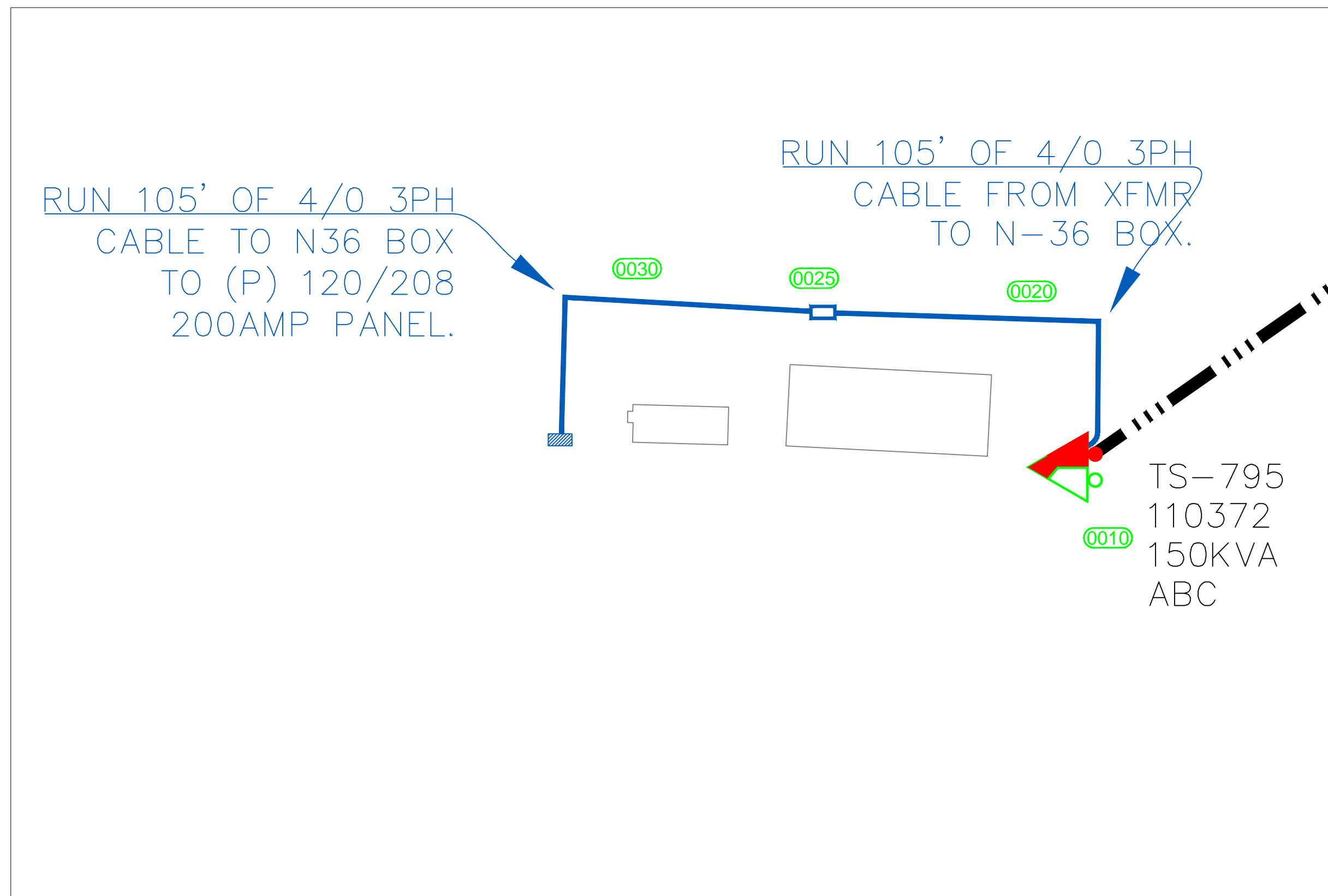
**SUGARLOAF COMM SITE
 250 CONESTOGA DRIVE**
**TYPICAL ELECTRICAL
 DETAILS**

SHEET
 4
 OF
 4

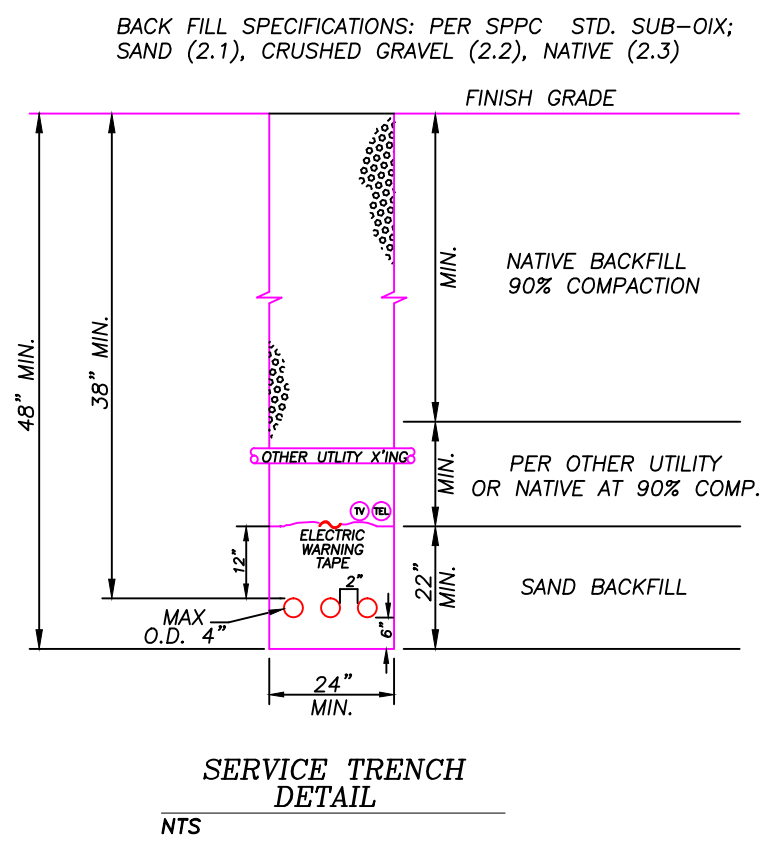
P:\Client Projects\Carson City, City of 113\0888 Carson City Electrical Design\113\0888 Carson City Works-Carson Public Works-SUGARLOAF ELECTRICAL.dwg



DESIGN WITHOUT ORTHO



PRELIMINARY
 NVENERGY
 04/16/2014
 NOT FOR CONSTRUCTION



NV ENERGY TO INSTALL:
 APPROX. 210' CKT. FT. U/G SERVICE CABLE, 120/208 TO 1 - 200AMP PANEL C/O 1- 4/0QUAD IN 1-3" C (CONDUIT BY CONTRACTOR)

APPLICANT TO FURNISH AND INSTALL:

- 1 - SECONDARY BOXES (N-36) 30"x11"x12" I.D. WITH 2 EXTENSIONS, (H-10, NON TRAFFIC AND INCIDENTAL TRAFFIC RATED BOX), FIBRELITE I.D. WHEN PLACED IN RESIDENTIAL DRIVEWAY OR WHEN LOCATED LESS THAN 3 FT. FROM THE WIDEST SECTION OF ANY APPROACH OF DRIVEWAY OR VEHICLE ACCESS. (H-20 TRAFFIC RATED BOX). EXTENSION AND STEEL COVER TO BE INSTALLED IF ANY PORTION OF BOX FALLS WITHIN COMMERCIAL DRIVEWAY OR STREET RIGHT OF WAY. (SEE STANDARD V80052U FOR H-10N 4 NON RATED) (SEE STANDARD V80052U FOR H-20 TRAFFIC RATED).

- * PROPOSED APPROX. 210 FT. 3", PVC SECONDARY CONDUIT.
- * (ABOVE FOOTAGE DOES NOT INCLUDE SWEEPS OR RISERS FOR SECONDARY BOXES, TRANSFORMERS, JUNCTION ENCLOSURES, ETC.)
 APPLICANT IS RESPONSIBLE FOR MANDRILLING CONDUIT AND INSTALLING A FULL LINE THAT MEETS OR EXCEEDS THE FOLLOWING REQUIREMENTS:
 - THE FULL LINE WILL BE A FLAT DESIGN
 - SHALL HAVE A MINIMUM BREAKING STRENGTH OF 400 LBS.
 - WILL HAVE SEQUENTIAL FOOTAGE MARKINGS
 - EXAMPLES OF FULL LINES THAT MEET THESE REQUIREMENTS (NVE 5TK195-1305)
 - NEPTICO "MULE TAPE" (UP400P)
 - CONDUX INTERNATIONAL (08036103)
 - SEE NVE VOLUME II, SECTION 4-CD000U.

NOTE: ALL CONDUIT INSTALLATIONS BENEATH FOUNDATION AND SLABS TO BE RIGID STEEL OR CONCRETE ENCASED PER NVE STDs. CD-0003U.

ALL TRENCHING AND BACK FILL PER APPLICABLE NVE STDs. TE-0001, TE-0003, TE-0004 AND TE-0010.

ALL STAKING REQUIREMENTS PER NVE STD. G1-0001U/G1U AND G1-0002U.

ALL STREET CUT PERMITS AND PAVEMENT CUTTING AND REPLACEMENT AS REQUIRED.

INSTALLATION OF U/G ELECTRIC FACILITIES IN RESIDENTIAL SUBDIVISIONS PER NVE STD. RU-0005-U.

RETAINING WALL REQUIREMENTS PER NVE STD. TE0040U.

8' x 5/8" GROUND RODS AT SWITCH, TRANSFORMER AND JUNCTION ENCLOSURE LOCATIONS.

BEFORE INSTALLATION OF THE UTILITY FACILITIES AND IF NO PUBLIC UTILITY EASEMENTS EXIST, THE OWNER OF RECORD SHALL SIGN APPROPRIATE EASEMENT DOCUMENTS.

ALL SERVICE CONDUITS TO BE STUBBED 10' MINIMUM FROM TRANSFORMER PADS AND SECONDARY BOXES AT THE SAME TIME AS MAIN LINE INSTALLED PER NVE STDs VOLUME II. (TE0010U)

GENERAL COMMENTS:

CALL CARSON ELECTRIC UNDERGROUND (888-993-1556) 48 HOURS PRIOR TO START OF CONSTRUCTION FOR TRENCH INSPECTION BEFORE COVERING TRENCH!
 (INCLUDE WORK ORDER NUMBER ALONG WITH NAME AND PHONE NUMBER OF PROJECT FOREMAN, IN VOICE MESSAGE)

EQUIPMENT BARRIER POSTS MAY BE REQUIRED PER NVE STD. PE-0009U.

RETAINING WALLS MAY BE REQUIRED FOR ANY SLOPES GREATER THAN 15% PER NVE STD. TE-0040-U.

ALL SECONDARY BOXES AND PRIMARY VAULTS SHALL BE TO FINISH GRADE.

ALL MATERIAL SHALL BE ON THE JOB SITE PRIOR TO THE START OF ANY WORK BY NVE.

REFER TO NVE STDs. U8000M FOR FURTHER CLARIFICATION OF DETAILS.

COMPACTION TESTS REQUIRED PER NVE STD. S600X.

METER MUST BE LOCATED WITHIN 10 FEET OF THE FRONT CORNER OF BUILDING AS STIPULATED IN NVE STD. U8000M. SERVICE METER MUST NOT BE FENCED.

GAS SERVICE CURB VALVE TO BE 30" FROM SIDE PROPERTY LINE AND ELECTRIC CONDUIT TO BE STUBBED 54" FROM SIDE PROPERTY LINE. BOTH GAS AND ELECTRIC UTILITIES TO BE ON SAME LOT.

NO TREE SHALL BE PLANTED UNDER OR ADJACENT TO ENERGIZED POWER LINES WHICH, AT MATURITY, SHALL GROW WITHIN 10 FEET OF THE ENERGIZED CONDUCTORS. NOR SHALL ANY PERMANENT STRUCTURE, FENCE, SHRUB OR TREE BE PLANTED CLOSER THAN 10 FEET IN FRONT AND 3 FEET FROM ALL OTHER SIDES OF A PAD MOUNTED TRANSFORMER.

THESE DRAWINGS ARE BASED ON CIVIL PLANS DATED:

NOTE: DEVELOPER IS RESPONSIBLE FOR ADHERENCE TO NVE GAS AND ELECTRIC STANDARDS. CONSTRUCTION STANDARDS CAN BE FOUND ON-LINE AT THE FOLLOWING WEB SITE: <http://www.nvenergy.com/business/newconstruction>.

THIS MAP ILLUSTRATES DATA COLLECTED FROM VARIOUS SOURCES AND MAY NOT REPRESENT A SURVEY OF THE PREMISES. NO RESPONSIBILITY IS ASSUMED AS TO THE SUFFICIENCY OR ACCURACY OF THE DATA DISPLAYED HEREON.

ALL WORK SHALL BE ACCOMPLISHED IN STRICT ACCORDANCE WITH THE SPECIFICATIONS SET FORTH IN THE ELECTRIC DISTRIBUTION GUIDE, VOL. II AS CURRENTLY ADOPTED BY NVE. THE CONTRACTOR SHALL SECURE COPIES OF THE AFOREMENTIONED CONSTRUCTION SPECIFICATIONS ON HIS OR HER OWN BEHALF.

USE CAUTION! PRIOR TO EXCAVATION, CHECK TO ENSURE ADDITIONAL DEPTH IS NOT REQUIRED TO ACCOMMODATE GAS AND/OR WATER FACILITIES.

SYMBOLS ARE NOT TO SCALE AND DO NOT NECESSARILY REPRESENT ACTUAL LOCATIONS OF FACILITIES.

DRAWING	DESIGNED BY	DATE	
BASE	LSJ		
ELECTRIC	LSJ		
GAS			
STREETLIGHT			
REVIEWED BY:			
Utility Designer	Engineer	Design Facilitator	
		Catholic Protection	
NO.	REVISION DESCRIPTIONS	DATE	DI
1			
2			
3			
4			
5			
6			
7			

P.O. Box 10100
R77CSE
Reno, NV. 89520-0024

NV ENERGY CONTACT INFORMATION:

COORDINATOR: LARA ST. JACQUES
 OFFICE: # 775-834-2909
 CELL: #
 FAX: #
 EMAIL: LSTJACQUES@NVENERGY.COM
 DESIGNER: LARA ST. JACQUES
 INSPECTION HOTLINE#: 888/999-1556

CUSTOMER CONTACT INFORMATION:

CUSTOMER: CITY OF CARSON
 ATTENTION: DARREN ANDERSON
 PHONE: # 775-283-7584
 FAX: # 775-887-2112
 EMAIL: DANDERSON@CARSON.ORG

CUST REP: #
 PHONE: #
 EMAIL:

TOWNSHIP-RANGE-SECTION N1620-32	APN# 008-011-30
------------------------------------	--------------------

SOURCE INFORMATION:
 1223 LINE 12.5KV
 NORM OUT OF
 EMERSON SUB

250 CONESTOGA DRIVE SHR

 DUCK HILL
 COMMUNICATION
 SITE

 VICINITY MAP (NTS)

250 CONESTOGA - SHR

EXHIBIT "A" APPLICANT INSTALLED CONDUIT	AUD#:	STL#:	GAS#:	ELE#: 3000566039
ELECTRIC DESIGN				
SCALE: 1:20				
SHEET#: E.1				