

E. NYE LANE PEDESTRIAN IMPROVEMENTS

CARSON CITY, NEVADA

PROJECT 031302.3

BOARD OF SUPERVISORS

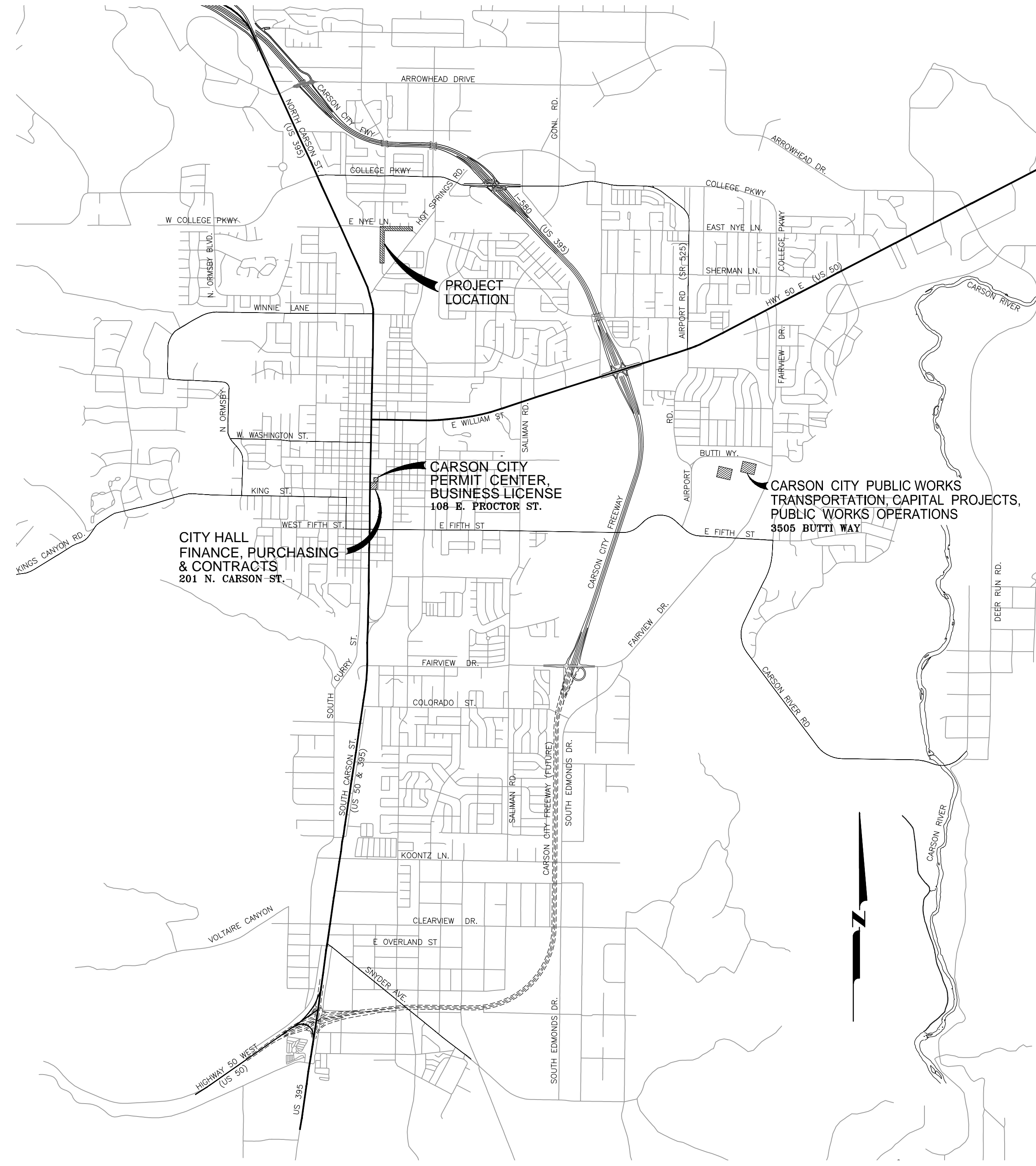
Robert Crowell	Mayor
Karen Abowd	Supervisor
Brad Bonkowski	Supervisor
John McKenna	Supervisor
Jim Shirk	Supervisor
Alan Glover	City Clerk

DESIGNED FOR:

**CARSON CITY PUBLIC WORKS DEPARTMENT
OPERATIONS DIVISION
3505 BUTTI WAY
CARSON CITY, NV 89701
887-2355**

GENERAL NOTES:

- ALL WORK SHALL CONFORM TO THE "STANDARD SPECIFICATIONS FOR PUBLIC WORKS CONSTRUCTION" (SSPWC) AND THE "STANDARD DETAILS FOR PUBLIC WORKS CONSTRUCTION" (SDPWC) AS ADOPTED BY CARSON CITY. THE CONTRACTOR SHALL OBTAIN A PERMIT FOR PUBLIC WORKS CONSTRUCTION FROM THE CARSON CITY PERMIT CENTER PRIOR TO THE START OF CONSTRUCTION.
- THE CONTRACTOR SHALL CALL UNDERGROUND SERVICE ALERT "CALL BEFORE YOU DIG" (811) OR (1-800-227-2600) AT LEAST TWO (2) WORKING DAYS PRIOR TO START OF CONSTRUCTION AND COMPLY WITH THE REQUIREMENTS OF NRS AND NAC 455 THROUGHOUT THE COURSE OF THE WORK, SEWER SERVICE LATERALS ARE NOT OWNED OR MARKED BY CARSON CITY.
- THE CONTRACTOR SHALL CALL THE CARSON CITY CONSTRUCTION MANAGER TWO (2) WORKING DAYS PRIOR TO THE START OF CONSTRUCTION. THE CONTRACTOR SHALL CALL ONE (1) WORKING DAY PRIOR TO REQUIRED INSPECTIONS AND TESTING. THE REQUIRED INSPECTIONS AND TESTING ARE LISTED ON THE INSPECTION RECORD ISSUED WITH EACH PERMIT. THE CONTRACTOR MUST HAVE THE PERMIT NUMBER AND THE DESCRIPTION LISTED ON THE INSPECTION RECORD TO SCHEDULE REQUIRED INSPECTIONS AND TESTING. FOR CITY CONTRACTED PROJECTS, THE CONTRACTOR SHALL SCHEDULE INSPECTIONS PER THE CONTRACT DOCUMENTS.
- FINAL INSPECTIONS WILL BE PERFORMED BY CARSON CITY ENGINEERING DIVISION ACCORDING TO THE CARSON CITY INSPECTIONS AND TESTING PROCEDURES. NOTE: THESE PROCEDURES REQUIRE SUBMITTAL OF RECORD DRAWING PRINTS BY THE CONTRACTOR AND 10 WORKING DAYS TO PREPARE A FINAL PUNCH LIST. ALL CONDITIONS OF THE FINAL INSPECTION MUST BE COMPLETED PRIOR TO FINAL ACCEPTANCE OR ANY APPROVAL OF A CERTIFICATE OF OCCUPANCY BY THE CARSON CITY ENGINEERING DIVISION.
- MODIFICATIONS TO THE APPROVED PLANS REQUIRES REVIEW AND APPROVAL BY THE CARSON CITY ENGINEERING DIVISION. WORK PERFORMED WITHOUT WRITTEN APPROVAL BY CARSON CITY ENGINEERING WILL REQUIRE REMOVAL AT THE CONTRACTORS EXPENSE.
- THE APPROVED PLAN, AND INSPECTION RECORD MUST BE ON THE JOB SITE AT ALL TIMES.
- PLAN APPROVAL FOR SEWER AND WATER CONSTRUCTION SHALL EXPIRE ONE YEAR FROM DATE OF APPROVAL UNLESS CONSTRUCTION HAS BEEN INITIATED. (COMC 12.06.180F, 12.01.140D)
- THE CONTRACTOR WILL BE SOLELY AND COMPLETELY RESPONSIBLE FOR ACQUIRING A STORMWATER DISCHARGE PERMIT FROM THE NEVADA DIVISION OF ENVIRONMENTAL PROTECTION (NDEP) INCLUDING DEVELOPING, SUBMITTING AND IMPLEMENTING A STORM WATER POLLUTION PREVENTION PLAN (SWPPP). THE CONTRACTOR SHALL DEVELOP, PLACE AND MAINTAIN STORM WATER PROTECTION DEVICES IN COMPLIANCE WITH THE NEVADA CONTRACTORS FIELD GUIDE FOR CONSTRUCTION SITE BEST MANAGEMENT PRACTICES (JUNE 2008).
- THE LOCATION OF EXISTING UTILITIES SHOWN ON THESE DRAWINGS IS BASED ON THE BEST INFORMATION AVAILABLE TO THE ENGINEER. IT SHALL BE THE CONTRACTORS RESPONSIBILITY TO VERIFY THESE LOCATIONS AT THE PROPOSED POINTS OF CONNECTIONS AND IN AREAS OF POSSIBLE CONFLICT WITH NEW UTILITY INSTALLATION. PRIOR TO BEGINNING CONSTRUCTION, POTHOUSING IS REQUIRED. SHOULD THE CONTRACTOR FIND ANY DISCREPANCIES BETWEEN THE CONDITIONS EXISTING IN THE FIELD AND THE INFORMATION SHOWN ON THESE DRAWINGS, HE SHALL NOTIFY THE ENGINEER BEFORE PROCEEDING WITH CONSTRUCTION.
- THE CONTRACTOR WILL BE SOLELY AND COMPLETELY RESPONSIBLE FOR THE CONDITIONS OF THE JOB SITE, INCLUDING SAFETY OF ALL PERSONS AND PROPERTY DURING PERFORMANCE OF THE WORK. THIS REQUIREMENT WILL APPLY CONTINUOUSLY AND NOT BE LIMITED TO NORMAL WORKING HOURS. THE CONTRACTOR SHALL BE RESPONSIBLE FOR THE DESIGN AND CONSTRUCTION OF PROPER SHORING OF TRENCHES IN ACCORDANCE WITH OCCUPATIONAL SAFETY LAWS. THE DUTIES OF THE ENGINEER DO NOT INCLUDE REVIEW OF THE ADEQUACY OF THE CONTRACTORS SAFETY IN, ON, OR NEAR THE CONSTRUCTION SITE.
- SHOULD IT APPEAR THAT THE WORK TO BE DONE, OR ANY MATTER RELATIVE THERETO, IS NOT SUFFICIENTLY DETAILED OR EXPLAINED ON THESE PLANS, THE CONTRACTOR SHALL CONTACT THE ENGINEER FOR SUCH FURTHER EXPLANATIONS AS MAY BE NECESSARY.



VICINITY MAP

N.T.S.

SHEET INDEX

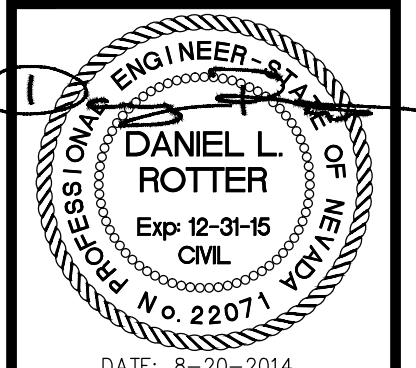
- | | |
|----|---|
| C1 | TITLE SHEET |
| C2 | STORMWATER PROTECTION PLAN,
SHEET INDEX & LEGEND |
| C3 | PLAN - E. NYE LN. |
| C4 | PLAN - NORTHGATE LN. |
| C5 | CONSTRUCTION DETAILS |
| C6 | CONSTRUCTION DETAILS |



APPLICATION NO. _____

DESIGNED BY: BD
DRAWN BY: BD
CHECKED BY: DA
DWG NO.: 031302.3-TS1
SCALE (HORIZ): N/A
SCALE (VERT): N/A
PLOT DATE: 2014.AUG.20

**CARSON CITY DEPARTMENT
PUBLIC WORKS DEPARTMENT**
3505 BUTTI WAY CARSON CITY, NEVADA 89701
PH: 887-2355 FAX: 887-2112

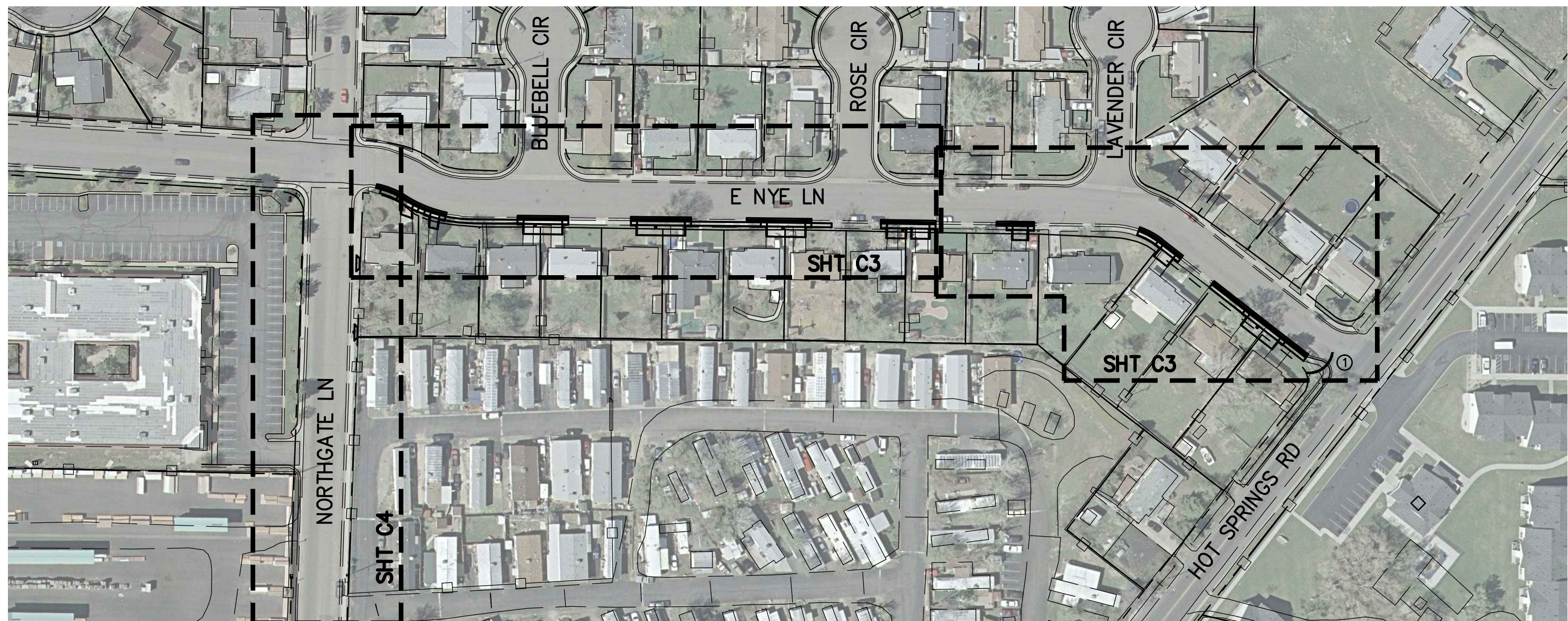


REV.	DATE	DESCRIPTION	BY	APP'D

**E. NYE LANE
PEDESTRIAN IMPROVEMENTS
PROJECT No. 03.1302.3**

SHEET
C1
OF
6

BID SET



ABBREVIATIONS

AB	AGGREGATE BASE	N	NORTH
AC	ASPHALTIC CONCRETE	N.I.C.	NOT IN CONTRACT
AGG	AGGREGATE	NTS	NOT TO SCALE
APN	ASSESSOR'S PARCEL NUMBER	PCC	PORTLAND CEMENT CONCRETE
ASSY	ASSEMBLY	PL	PROPERTY LINE
ASTM	AMERICAN SOCIETY FOR TESTING MATERIALS	PVC	POLYVINYL CHLORIDE
AWWA	AMERICAN WATER WORKS ASSOCIATION	PVMT	PAVEMENT
CATV	CABLE TV	R	RADIUS
CB	CATCH BASIN	ROW	RIGHT OF WAY
CL	CENTER LINE, CLASS	RT	RIGHT
CO	CLEAN OUT	S	SLOPE, SOUTH
COMP	COMPACT/COMPACTED	SCH	SCHEDULE
CONC	CONCRETE	SD	STORM DRAIN
C&G	CURB & GUTTER	SDMH	STORM DRAIN MANHOLE
DI	DROP INLET/DUCTILE IRON	SDR	STANDARD DIMENSION RATIO
DTL	DETAIL	SF	SQUARE FEET
DIA, Ø	DIAMETER	SHT	SHEET
DWG	DRAWING	SS	SANITARY SEWER
EXIST	EXISTING	SSMH	SANITARY SEWER MANHOLE
E	EAST	SSPWC	STANDARD SPECIFICATIONS FOR PUBLIC WORKS CONSTRUCTION
EA	EACH	STA	STATION
ELECT	ELECTRIC/ELECTRICAL	STD	STANDARD
EL, ELEV	ELEVATION	STL	STEEL
EP	EDGE OF PAVEMENT	SVC	SERVICE
F	FEET	T, TELE	TELEPHONE
FC	FINISH GRADE	T.B.C.	TOP BACK OF CURB
FL	FLOWLINE	TOC	TOP OF CURB/TOP OF CONCRETE
G	GAS	TOP	TOP OF PIPE
GS	GAS SERVICE	T.O.V.	TOP OF VAULT
GRD	GRADE	TRANS	TRANSFORMER
GV	GAS VALVE/GATE VALVE	TYP	TYPICAL
HORIZ	HORIZONTAL	U/G	UNDERGROUND
HV	HORIZONTAL/VERTICAL	UGE	UNDERGROUND ELECTRIC
HYD	HYDRANT	UL	UNDERWRITERS LABORATORIES
INC	INCLUDED/INCLUDING	VG	VALLEY GUTTER
IRR, IRRG	IRRIGATION LINE	VERT	VERTICAL
LAT	LATERAL	W	WEST, WATER
LF	LINEAL FEET	W/	WITH
MAX	MAXIMUM	W/O	WITHOUT
MDD	MAXIMUM DRY DENSITY	WS	WATER SERVICE
MH	MANHOLE	WV	WATER VALVE
MIN	MINIMUM		
MMD	MAXIMUM MARSHAL DENSITY		

STORMWATER CONSTRUCTION NOTES:

- ① PLACE STORM DRAIN INLET PROTECTION DOWNSTREAM FROM CONSTRUCTION

STORMWATER PROTECTION NOTES:

1. PRIOR TO ANY CONSTRUCTION ACTIVITY, THE CONTRACTOR SHALL INSTALL AND MAINTAIN ALL STORM WATER PROTECTION DEVICES IN ACCORDANCE WITH THE "NEVADA CONTRACTORS FIELD GUIDE FOR CONSTRUCTION SITE BEST MANAGEMENT PRACTICES" AND DETAILS AS SHOWN.
2. ALL INSTALLED PROTECTION DEVICES SHALL BE INSPECTED AND APPROVED BY THE CARSON CITY CONSTRUCTION INSPECTOR PRIOR TO ANY CONSTRUCTION ACTIVITY.
3. BMP'S IN ADDITION TO THOSE INDICATED ON PLAN SHEETS, AND THE CONTRACTOR'S SWPPP MAY BE REQUIRED IF THEY DON'T MEET LOCAL PERFORMANCE STANDARDS.
4. ALL BMP'S MUST BE INSPECTED WEEKLY, PRIOR TO FORECASTED RAIN EVENTS, AND WITHIN 24 HOURS AFTER ANY EVENT THAT CREATES RUNOFF AT THE SITE.
5. ACCUMULATED SEDIMENT MUST BE REMOVED FROM BMP'S WHEN THE DESIGN CAPACITY HAS BEEN REDUCED BY 50 PERCENT OR MORE. SEDIMENT MUST ALSO BE REMOVED WITHIN SEVEN DAYS AFTER A RUNOFF EVENT OR PRIOR TO THE NEXT FORECASTED RAIN EVENT WHICHEVER IS EARLIER.
6. IF THE ENTRANCE STABILIZATION IS NOT PREVENTING SEDIMENT FROM BEING TRACKED ONTO PAVEMENT, ALTERNATIVE MEASURES TO KEEP THE STREETS FREE OF SEDIMENT SHALL BE USED. THIS MAY INCLUDE STREET SWEEPING, AN INCREASE IN THE DIMENSIONS OF THE ENTRANCE, OR THE INSTALLATION OF A WHEEL WASH.
7. ANY ROCK THAT IS LOOSENED FROM THE ENTRANCE STABILIZATION PAD, WHICH END UP ON THE PAVED ROADWAY SHALL BE REMOVED IMMEDIATELY.
8. CONTRACTOR SHALL INSPECT LOCAL ROADS ADJACENT TO THE SITE DAILY, SWEEP OR VACUUM TO REMOVE ANY VISIBLE ACCUMULATED SEDIMENT.
9. ANY SEDIMENT THAT IS TRACKED ONTO PAVEMENT SHALL BE REMOVED BY SHOVELING, STREET SWEEPING OR VACUUMING. THE SEDIMENT COLLECTED BY SWEEPING SHALL BE REMOVED OR STABILIZED ON SITE. THE PAVEMENT SHALL NOT BE CLEANED BY WASHING DOWN THE STREET, EXCEPT WHEN SWEEPING IS INEFFECTIVE AND THERE IS A THREAT TO PUBLIC SAFETY. IF IT IS NECESSARY TO WASH THE STREETS, THE CONSTRUCTION OF A SMALL SUMP SHALL BE CONSIDERED. THE SEDIMENT WOULD THEN BE WASHED INTO THE SUMP WHERE IT CAN BE CONTROLLED.
10. CONTRACTOR SHALL BE RESPONSIBLE FOR MAINTAINING DUST CONTROL WITHIN THE CONSTRUCTION LIMITS AT ALL TIMES.
11. THE CONTRACTOR OR HIS QUALIFIED AGENT IS REQUIRED TO ROUTINELY INSPECT ALL AREAS OF DISTURBED AND BARE SOIL, AREAS USED FOR STORAGE OF MATERIALS AND EQUIPMENT THAT ARE EXPOSED TO PRECIPITATION, ONSITE VEHICLE ENTRANCE AND EXIT LOCATIONS AND ALL ONSITE EROSION AND SEDIMENT CONTROL BMP'S.

LEGEND

EXISTING		PROPOSED
---	APPROX. PROPERTY LINE	---
---	CENTER LINE	---
---	EASEMENT	---
---	FENCE	---
---	EDGE OF PAVEMENT	---
---	CONSTRUCTION NOTE	(XX)
⊗	WATER VALVE	
⊗	FIRE HYDRANT	
⊗	SEWER MANHOLE	
⊗	STORMDRAIN MANHOLE	
⊗	POWER POLE	
---	OVERHEAD POWER	
---	GUY WIRE	

SHEET INDEX & STORMWATER PROTECTION PLAN

SCALE: 1"=100'

Call before you Dig
Avoid cutting underground utility lines. It's costly.

Call

811

OR

1-800-227-2600

**E. NYE LANE
PEDESTRIAN IMPROVEMENTS
PROJECT No. 03.1302.3**

**STORMWATER PROTECTION PLAN,
SHEET INDEX & LEGEND**

SHEET
C2
OF
6

**CARSON CITY
PUBLIC WORKS DEPARTMENT**

DESIGNED BY: BD
DRAWN BY: BD
CHECKED BY: DA

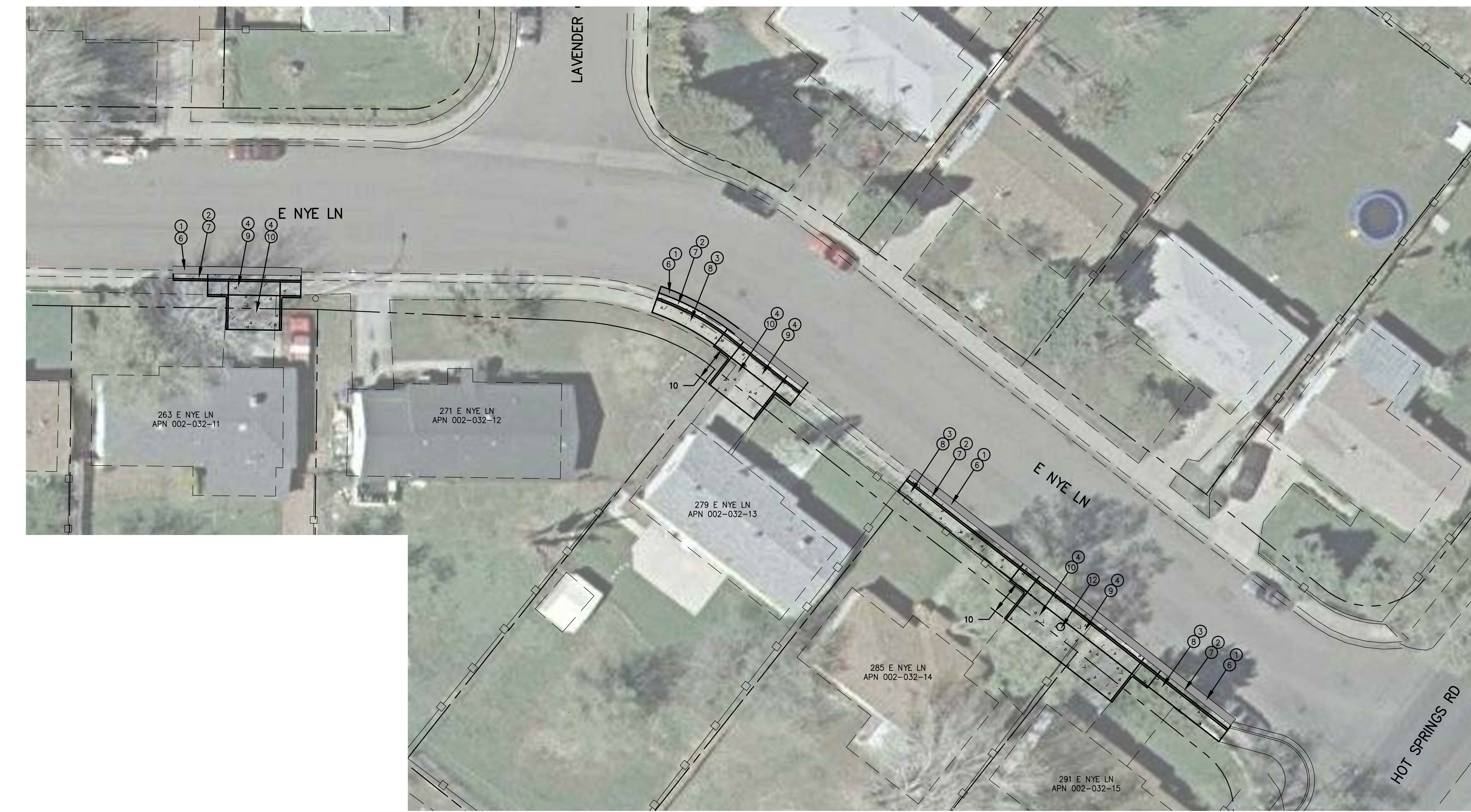
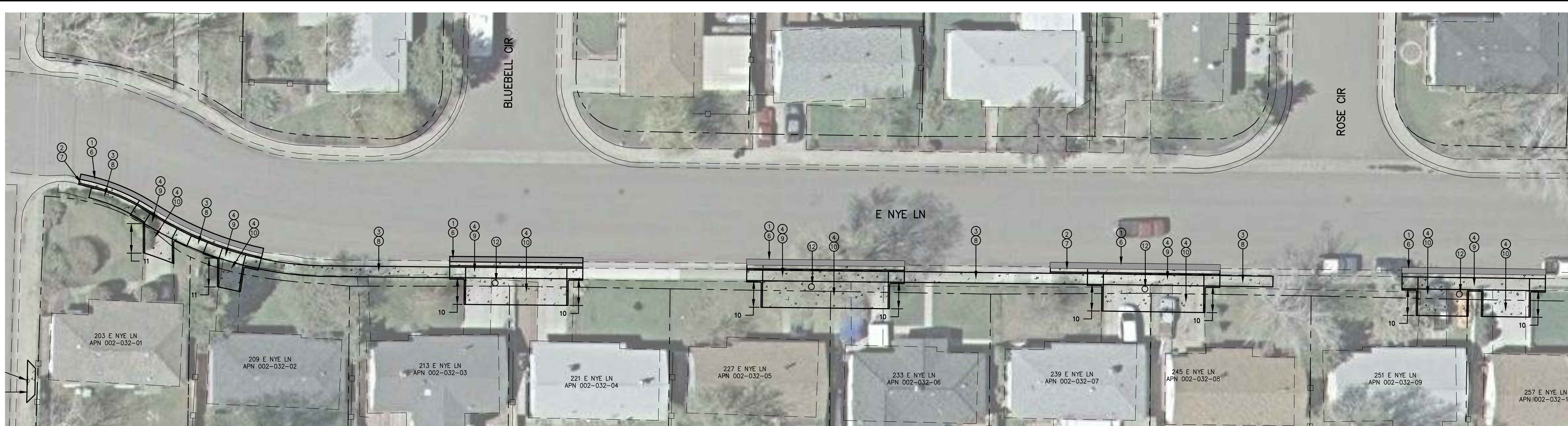
DWG NO.: 03-1302-3B51
SCALE (HORIZ): 1"=100'
SCALE (VERT): "X"=XX'
PLOT DATE: 2014.AUG.20

DANIEL L. ROTTER
Exp 12-31-15
CIVIL
No. 22071

DATE: 8-20-2014

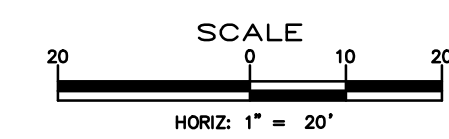
REV.	DATE	DESCRIPTION	BY	APP'D

BID SET



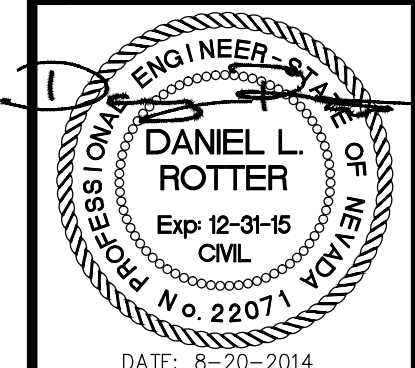
CONSTRUCTION NOTES

- ① SAWCUT, REMOVE AND DISPOSE OF EXIST AC PAVEMENT.
- ② SAWCUT, REMOVE AND DISPOSE OF EXIST PCC CURB AND GUTTER.
- ③ SAWCUT, REMOVE AND DISPOSE OF EXIST PCC SIDEWALK.
- ④ SAWCUT, REMOVE AND DISPOSE OF EXIST PCC DRIVEWAY AND DRIVEWAY APRON.
- ⑤ REMOVE EXISTING CROSSWALK STRIPING.
- ⑥ PATCH AC PAVEMENT PER STANDARD DETAIL C-5.1.6.
- ⑦ CONSTRUCT TYPE 1 CURB AND GUTTER PER STANDARD DETAIL C-5.1.3.
- ⑧ CONSTRUCT TYPE A SIDEWALK PER STANDARD DETAIL C-5.2.2. PROVIDE A MINIMUM OF 4 FEET CLEARANCE AROUND OBSTACLES.
- ⑨ CONSTRUCT TYPE 1 PCC DRIVEWAY APRON PER STANDARD DETAIL C-5.2.3.
- ⑩ CONSTRUCT DRIVEWAY PER STANDARD DETAIL C-5.2.3.
- ⑪ CONSTRUCT MID-BLOCK CURB RAMP PER STANDARD DETAIL C-5.3.9. (DO NOT CONSTRUCT CURB AT BACK OF LANDING)
- ⑫ ADJUST EXISTING WATER METER PIT SETTER RIM TO FINISH GRADE.



DESIGNED BY: BD
 DRAWN BY: BD
 CHECKED BY: DA
 DWG NO.: 03-1302-3B51
 SCALE (HORIZ): 1"=20'
 SCALE (VERT): X"=X'
 PLOT DATE: 2014 AUG 20

**CARSON CITY
 PUBLIC WORKS DEPARTMENT**
 3505 BUTTLI WAY CARSON CITY, NEVADA 89701
 PH: 775-887-2355 FAX: 775-887-2112



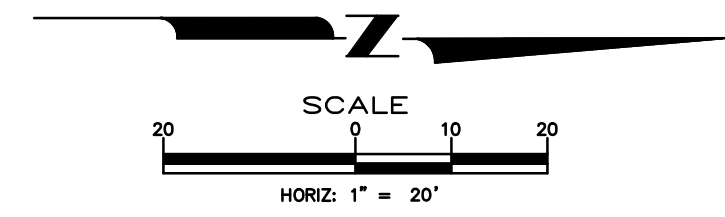
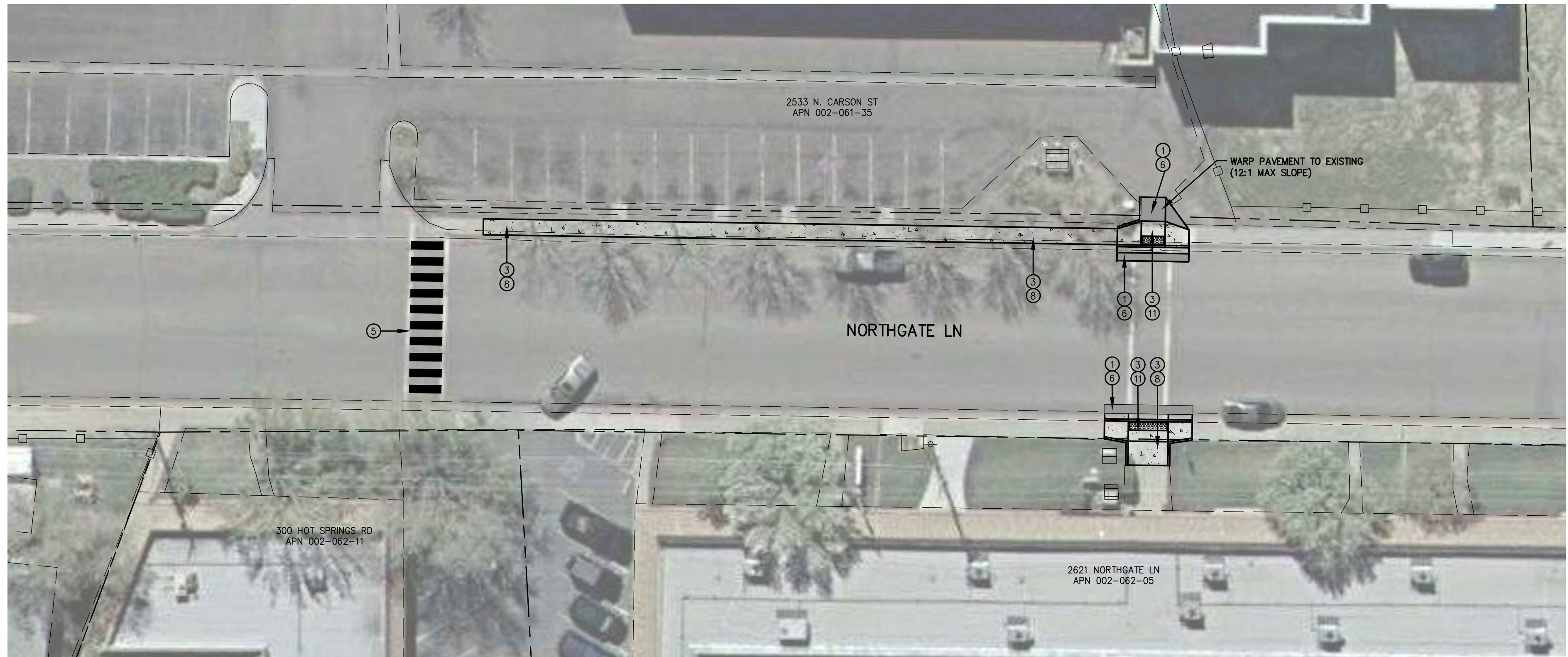
REV.	DATE	DESCRIPTION	BY	APP'D

**E. NYE LANE
 PEDESTRIAN IMPROVEMENTS
 PROJECT No. 03.1302.3**
**E. NYE LN
 PLAN VIEW**

SHEET
C3
 OF
6

BID SET

I:\CAPITAL PROJECTS\Projects\031302.3-Nye\Drawings\02 Design\DWG\03-1302-3B51.dwg



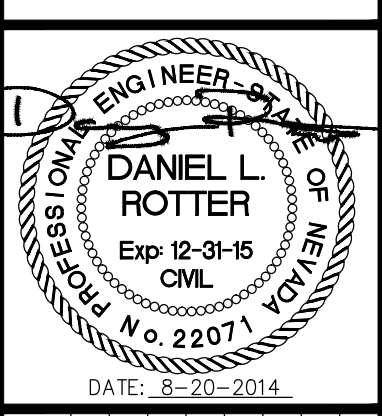
CONSTRUCTION NOTES

- ① SAWCUT, REMOVE AND DISPOSE OF EXIST AC PAVEMENT.
- ② SAWCUT, REMOVE AND DISPOSE OF EXIST PCC CURB AND GUTTER.
- ③ SAWCUT, REMOVE AND DISPOSE OF EXIST PCC SIDEWALK.
- ④ SAWCUT, REMOVE AND DISPOSE OF EXIST PCC DRIVEWAY AND DRIVEWAY APRON.
- ⑤ REMOVE EXISTING CROSSWALK STRIPING.
- ⑥ PATCH AC PAVEMENT PER STANDARD DETAIL C-5.1.6.
- ⑦ CONSTRUCT TYPE 1 CURB AND GUTTER PER STANDARD DETAIL C-5.1.3.
- ⑧ CONSTRUCT TYPE A SIDEWALK PER STANDARD DETAIL C-5.2.2. PROVIDE A MINIMUM OF 4 FEET CLEARANCE AROUND OBSTACLES.
- ⑨ CONSTRUCT TYPE 1 PCC DRIVEWAY APRON PER STANDARD DETAIL C-5.2.3.
- ⑩ CONSTRUCT DRIVEWAY PER STANDARD DETAIL C-5.2.3.
- ⑪ CONSTRUCT MID-BLOCK CURB RAMP PER STANDARD DETAIL C-5.3.9. (DO NOT CONSTRUCT CURB AT BACK OF LANDING)
- ⑫ ADJUST EXISTING WATER METER PIT SETTER RIM TO FINISH GRADE.



DESIGNED BY: ED
 DRAWN BY: ED
 CHECKED BY: DA
 DWG NO.: 03-1302-3851
 SCALE (HORIZ): 1"=20'
 SCALE (VERT): X"=X'
 PLOT DATE: 2014 AUG 20

CARSON CITY PUBLIC WORKS DEPARTMENT
 3505 BUTTLI WAY CARSON CITY, NEVADA 89701
 PH: 775-887-2355 FAX: 775-887-2112



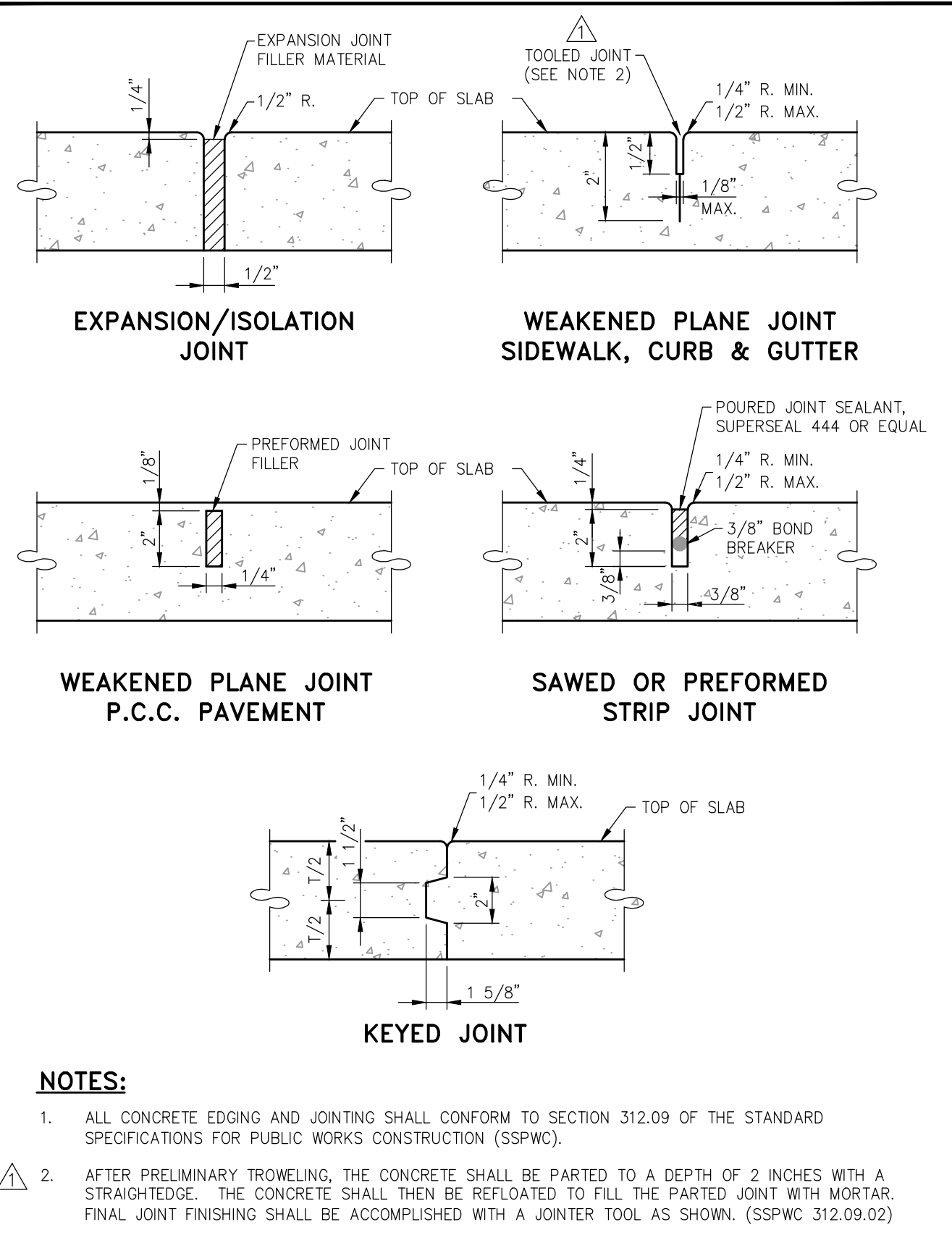
REV.	DATE	DESCRIPTION	BY	APP'D

E. NYE LANE PEDESTRIAN IMPROVEMENTS
 PROJECT No. 03.1302.3
NORTHGATE LN PLAN VIEW

SHEET
C4
 OF
 6

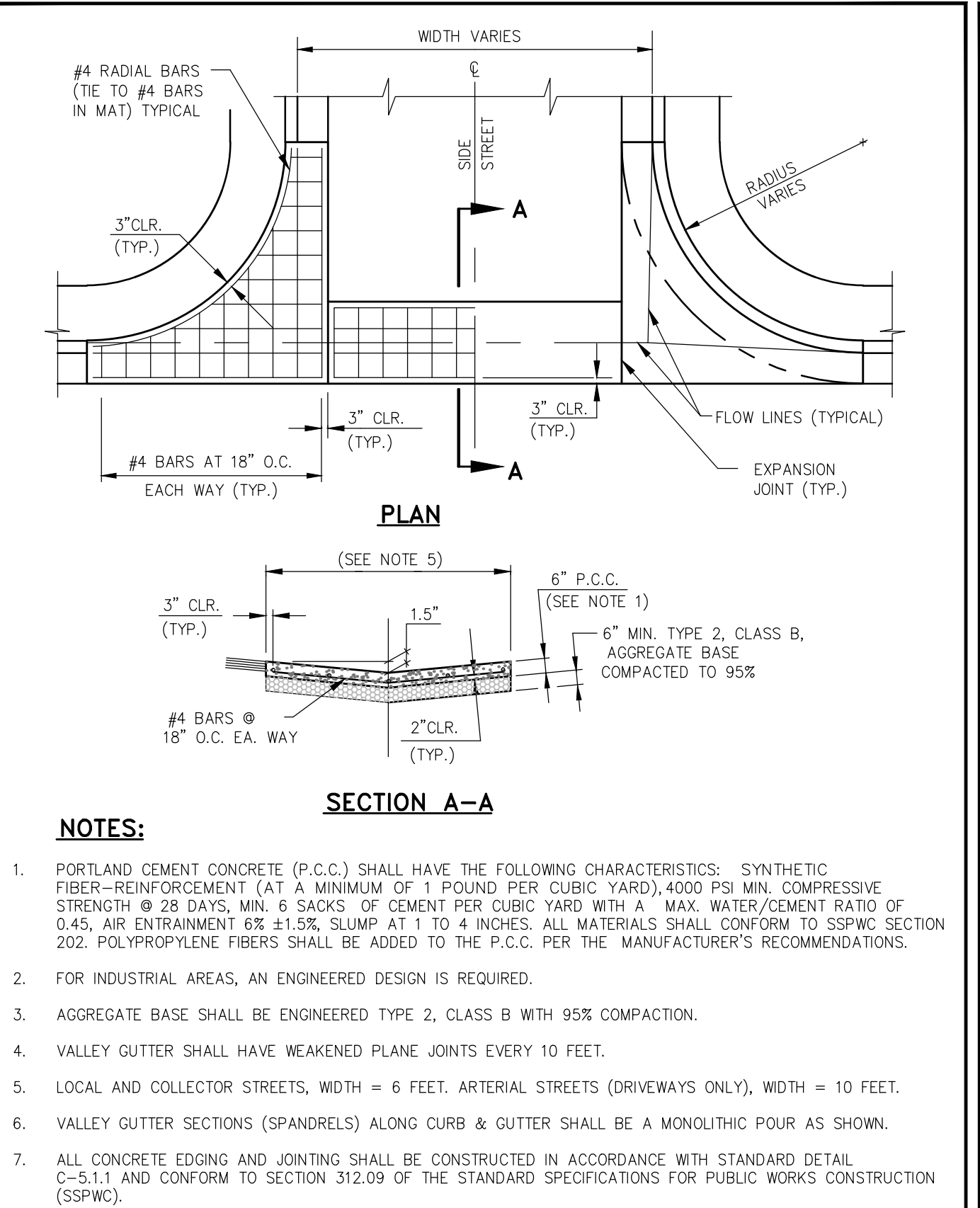
BID SET

I:\CAPITAL PROJECTS\PROJECTS\031302.3-Nye\Development\02 Design\DWG\03-1302-3851.dwg



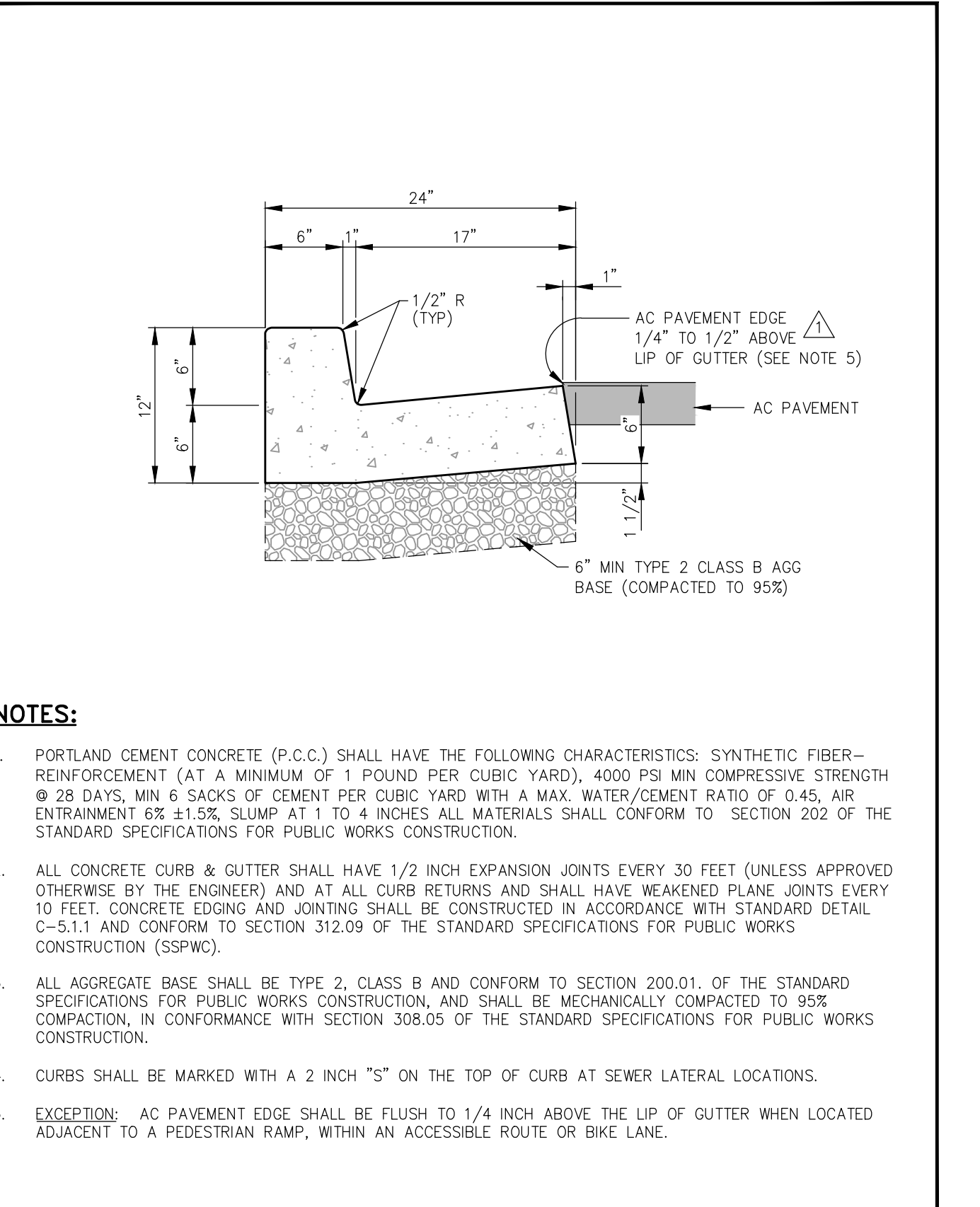
NO.	REVISION	DATE	STANDARD DETAIL FOR PUBLIC WORKS CONSTRUCTION	SECTION CARSON CITY
1	AC/JIP	06/12		
2	NOTE 5	05/14		

APPROVED BY: [Signature] 5/14



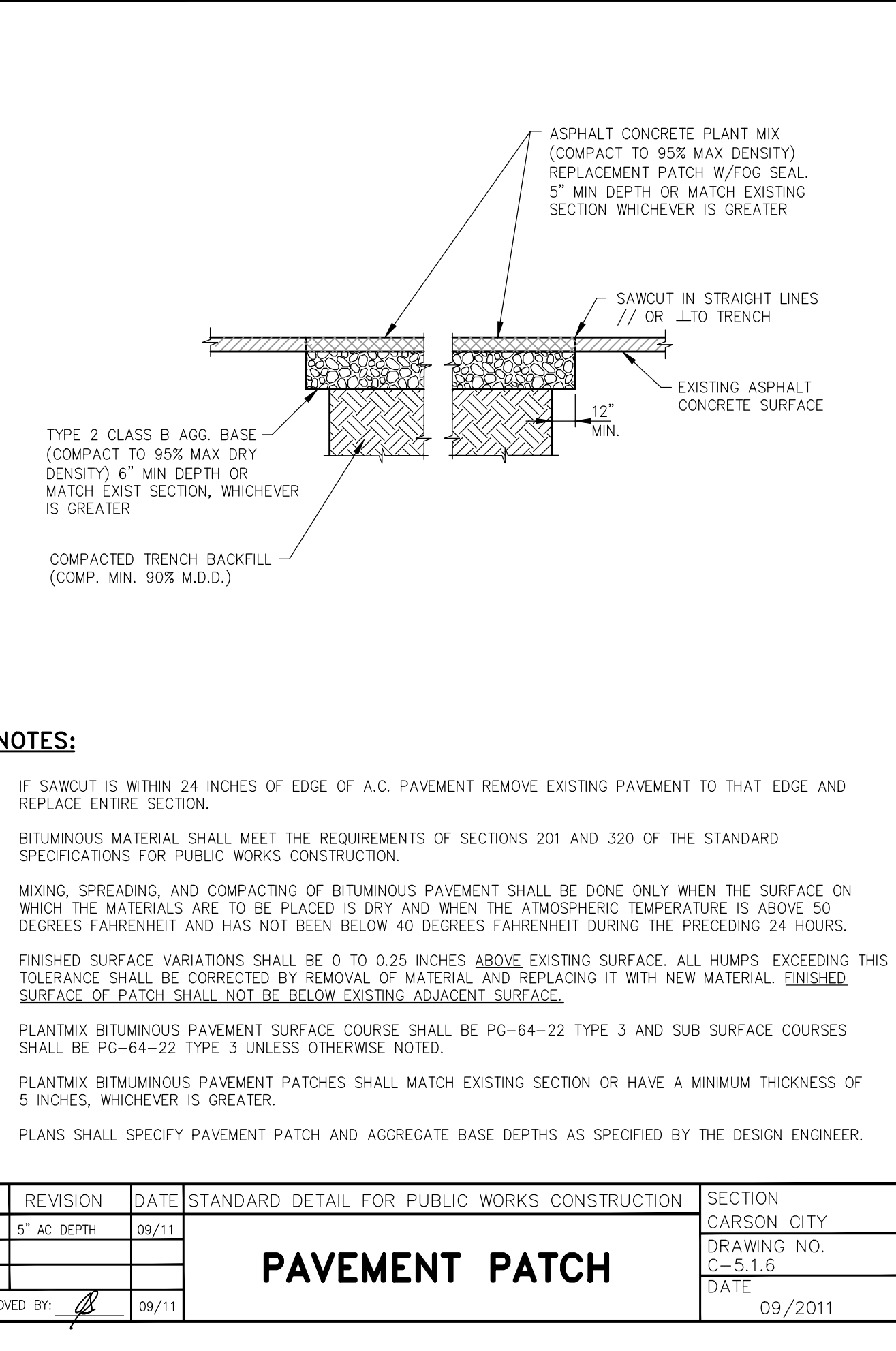
NO.	REVISION	DATE	STANDARD DETAIL FOR PUBLIC WORKS CONSTRUCTION	SECTION CARSON CITY
1	AC/JIP	06/12		
2	NOTE 5	05/14		

APPROVED BY: [Signature] 7/2009



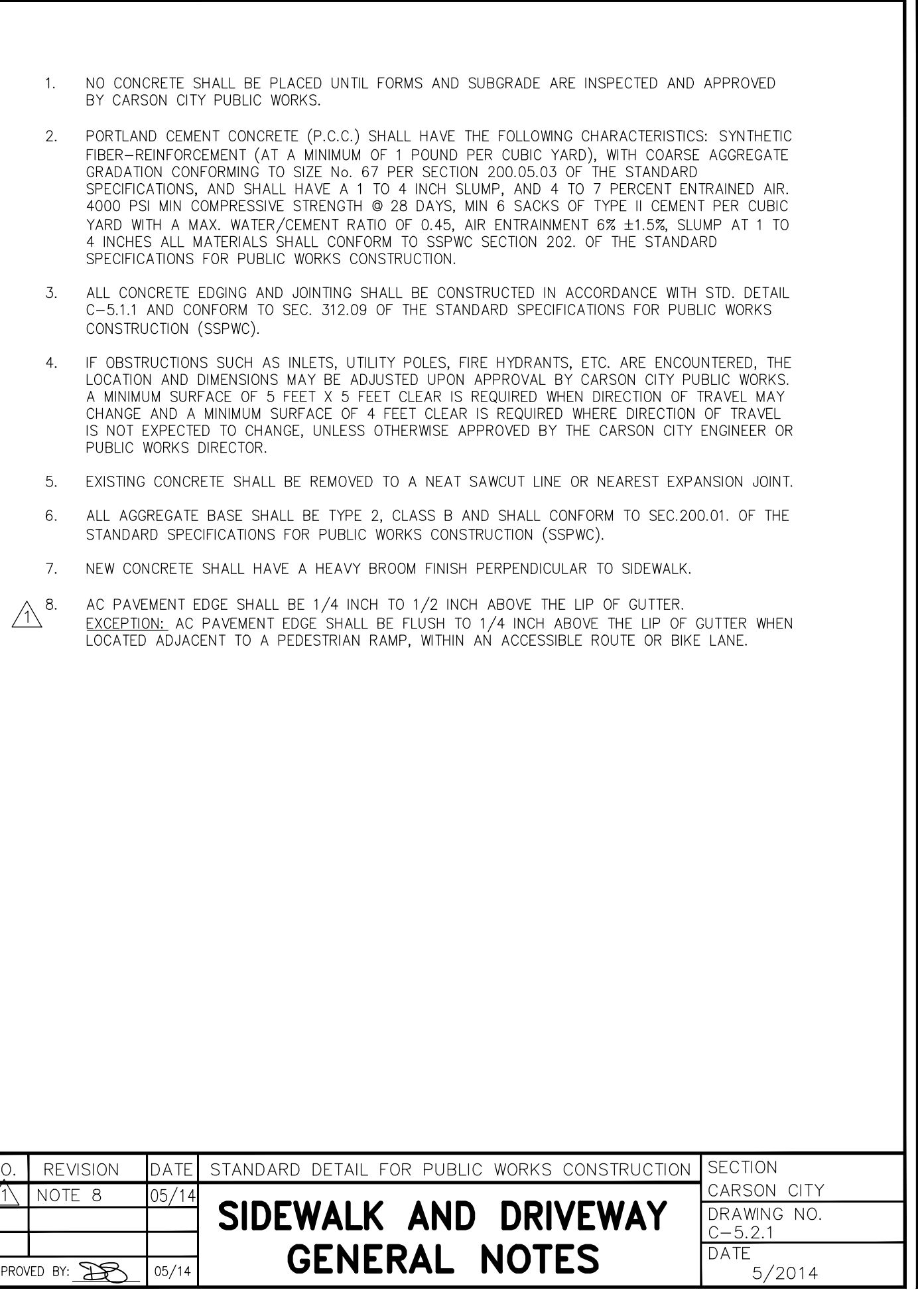
NO.	REVISION	DATE	STANDARD DETAIL FOR PUBLIC WORKS CONSTRUCTION	SECTION CARSON CITY
1	AC/JIP	06/12		
2	NOTE 5	05/14		

APPROVED BY: [Signature] 5/2014



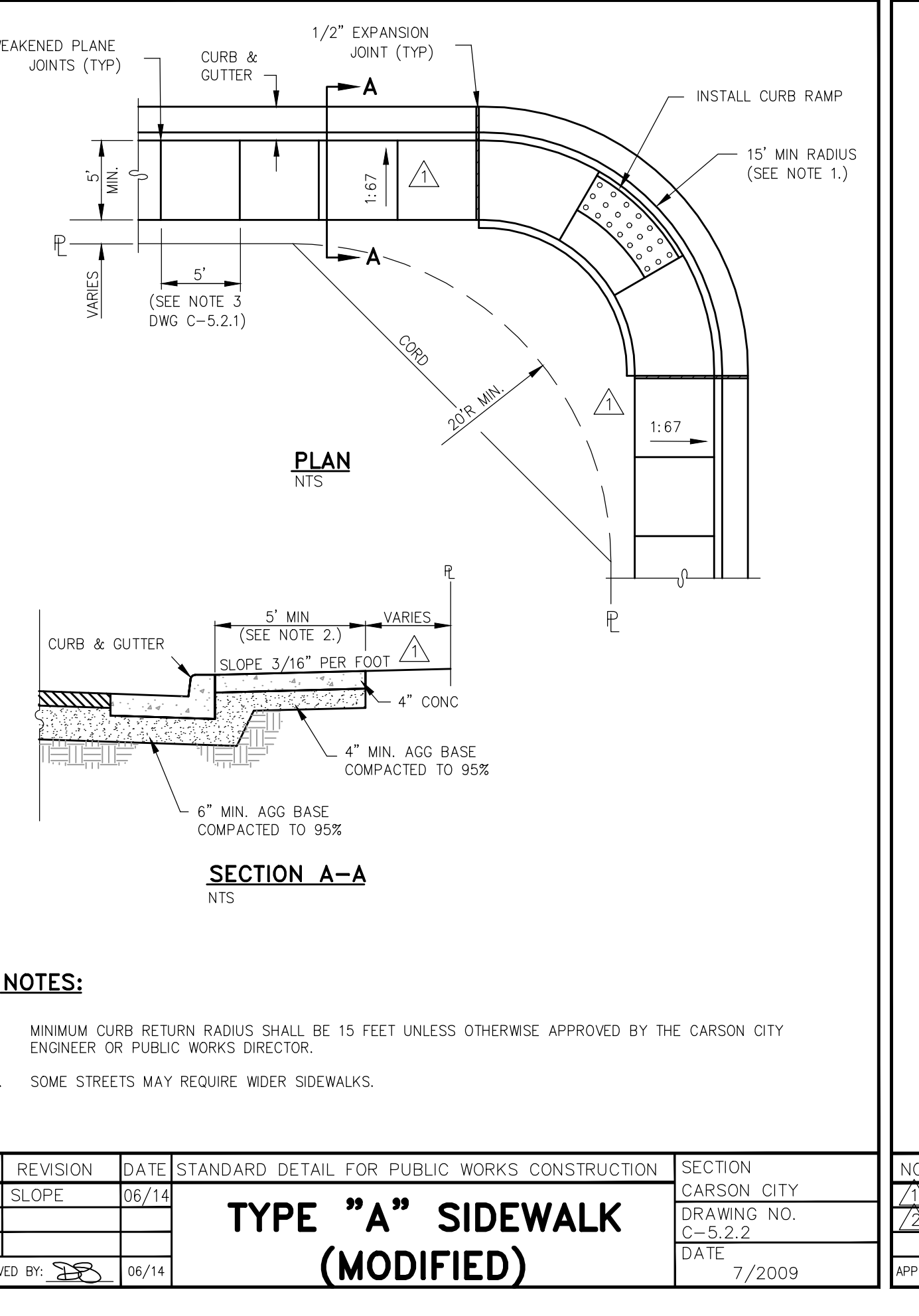
NO.	REVISION	DATE	STANDARD DETAIL FOR PUBLIC WORKS CONSTRUCTION	SECTION CARSON CITY
1	AC DEPTH	09/11		

APPROVED BY: [Signature] 09/11



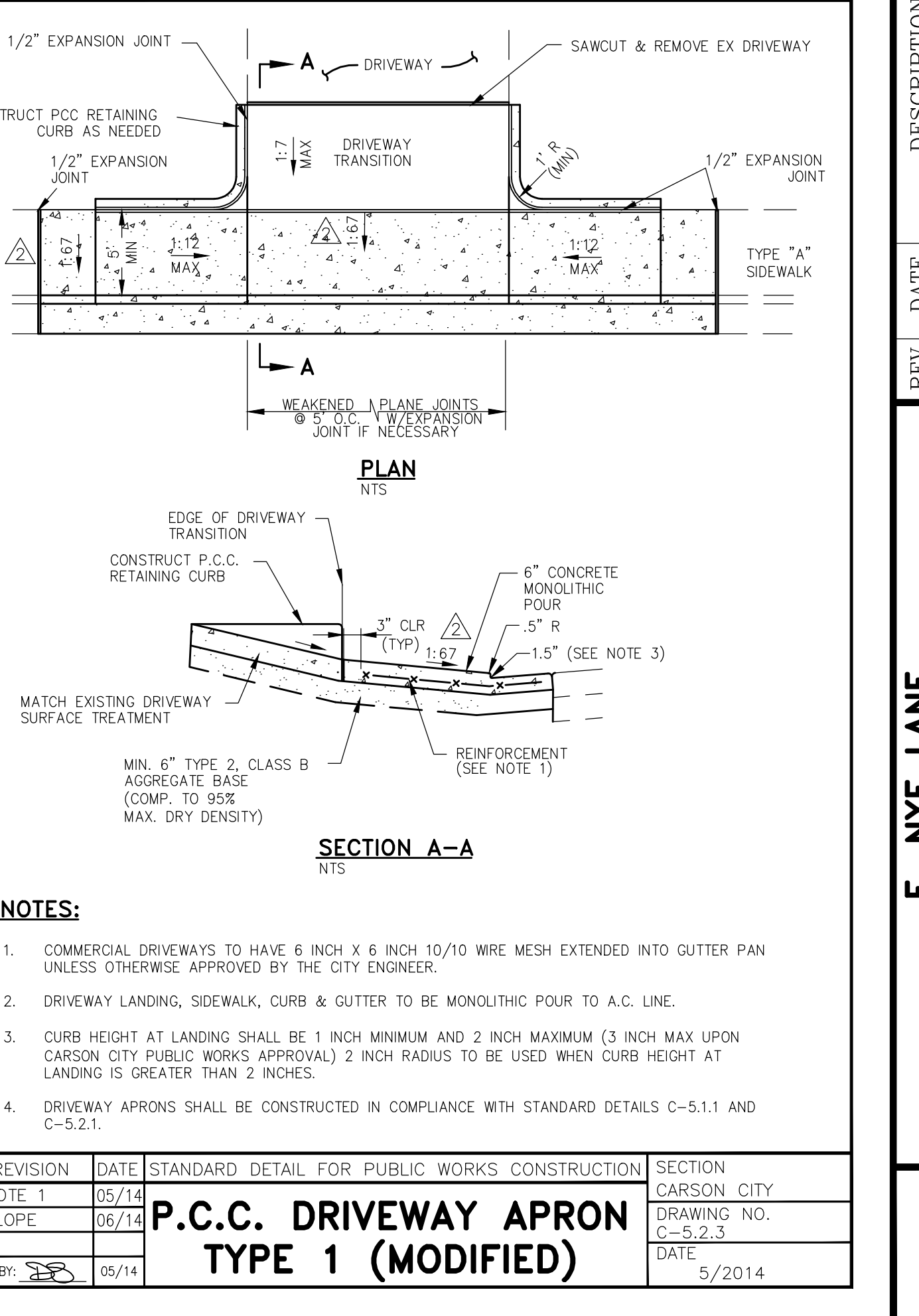
NO.	REVISION	DATE	STANDARD DETAIL FOR PUBLIC WORKS CONSTRUCTION	SECTION CARSON CITY
1	NOTE B	05/14		

APPROVED BY: [Signature] 05/14



NO.	REVISION	DATE	STANDARD DETAIL FOR PUBLIC WORKS CONSTRUCTION	SECTION CARSON CITY
1	SLOPE	06/14		

APPROVED BY: [Signature] 06/14



NO.	REVISION	DATE	STANDARD DETAIL FOR PUBLIC WORKS CONSTRUCTION	SECTION CARSON CITY
1	NOTE 1	05/14		
2	SLOPE	06/14		

APPROVED BY: [Signature] 05/14



DESIGNED BY: BD
 DRAWN BY: BD
 CHECKED BY: DA
 DWG NO.: 03-1302-3B51
 SCALE (HORIZ): 1"=20'
 SCALE (VERT): 1"=4'
 PLOT DATE: 2014.AUG.20

CARSON CITY PUBLIC WORKS DEPARTMENT

3505 BUTTI WAY CARSON CITY, NEVADA 89701
 PH: 775-887-2555 FAX: 775-887-2112

REGISTERED PROFESSIONAL ENGINEER
DANIEL L. ROTTER
 Exp 12-31-15
 No. 22071
 DATE: 8-20-2014

REV.	DATE	DESCRIPTION

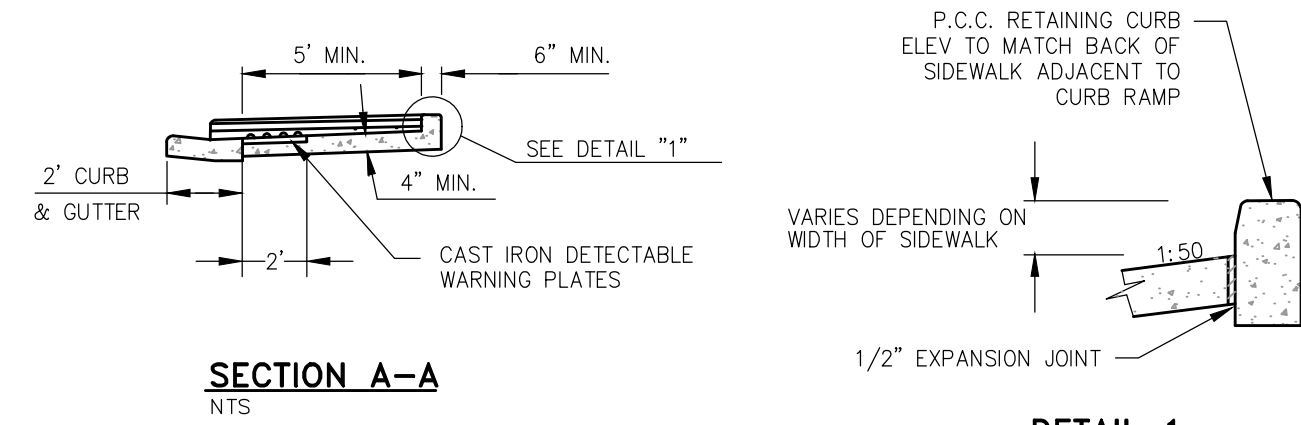
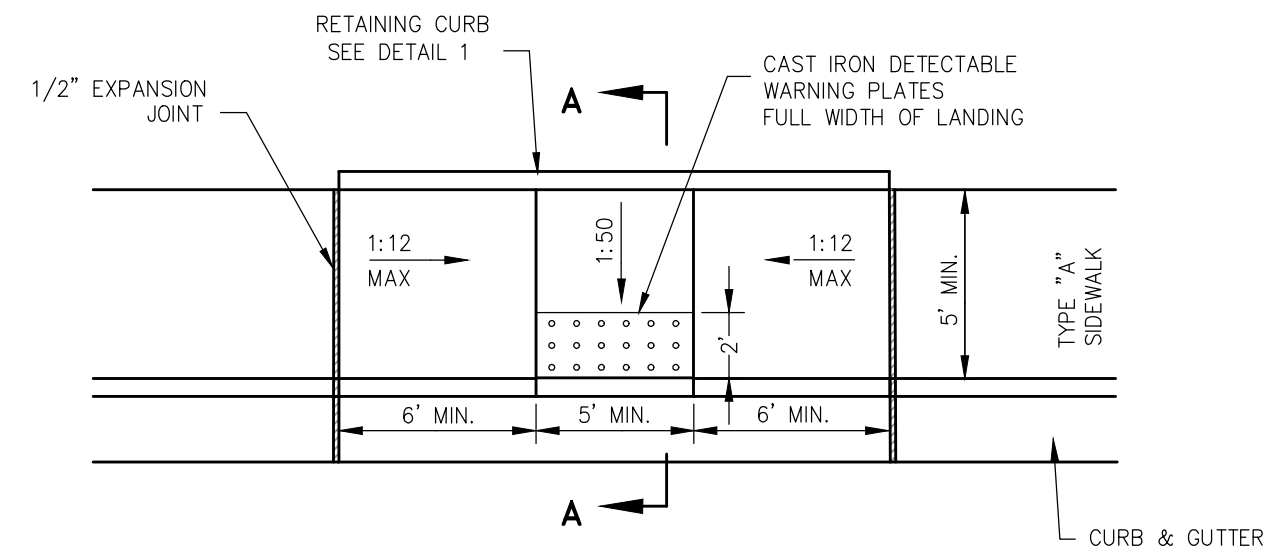
E. NYE LANE PEDESTRIAN IMPROVEMENTS PROJECT No. 03.1302.3

CONSTRUCTION DETAILS

SHEET **C5** OF **6**

BID SET

- NO CONCRETE SHALL BE PLACED UNTIL FORMS AND SUBGRADE ARE INSPECTED BY CARSON CITY ENGINEERING DIVISION.
- PORTLAND CEMENT CONCRETE (P.C.C.) SHALL HAVE THE FOLLOWING CHARACTERISTICS: SYNTHETIC FIBER-REINFORCEMENT (AT A MINIMUM OF 1 POUND PER CUBIC YARD), 4000 PSI MIN COMPRESSIVE STRENGTH @ 28 DAYS, MIN 6 SACKS OF CEMENT PER CUBIC YARDS WITH A MAX. WATER/CEMENT RATIO OF 0.45, AIR ENTRAINMENT 6% ±1.5%, SLUMP AT 1 TO 4 INCHES. ALL MATERIALS SHALL CONFORM TO SSPWC SECTION 202. OF THE STANDARD SPECIFICATIONS FOR PUBLIC WORKS CONSTRUCTION.
- ALL CONCRETE EDGING AND JOINTING SHALL BE CONSTRUCTED IN ACCORDANCE WITH STD. DETAIL C-5.1.1 AND CONFORM TO SEC. 312.09 OF THE STANDARD SPECIFICATIONS FOR PUBLIC WORKS CONSTRUCTION (SSPWC).
- IF OBSTRUCTIONS SUCH AS INLETS, UTILITY POLES, FIRE HYDRANTS, ETC. ARE ENCOUNTERED, THE LOCATION AND DIMENSIONS MAY BE ADJUSTED UPON APPROVAL BY CARSON CITY ENGINEER OR PUBLIC WORKS DIRECTOR. A MINIMUM LANDING OF 5 FEET X 5 FEET CLEAR IS REQUIRED WHEN DIRECTION OF TRAVEL MAY CHANGE. A MINIMUM OF 4 FEET CLEAR IS MAY BE USED UPON APPROVAL OF THE CARSON CITY ENGINEER OR PUBLIC WORKS DIRECTOR WHERE DIRECTION OF TRAVEL IS NOT EXPECTED TO CHANGE.
- WHEN A CROSSWALK IS SERVICED BY RAMP, LANDINGS SHALL BE CONTAINED WITHIN THE CROSSWALK AREA.
- EXISTING CONCRETE SHALL BE REMOVED TO A NEAT SAWCUT LINE OR NEAREST EXPANSION JOINT.
- PLANTMIX BITUMINOUS SURFACE SHALL BE FLUSH WITH THE EDGE OF THE GUTTER PAN IN THE AREA OF THE CURB RAMP. GUTTER SHALL MAINTAIN POSITIVE DRAINAGE TO PREVENT PONDING.
- ALL AGGREGATE BASE SHALL BE TYPE 2, CLASS B AND SHALL CONFORM TO SEC.200.01. OF THE STANDARD SPECIFICATIONS FOR PUBLIC WORKS CONSTRUCTION (SSPWC).
- NEW CONCRETE SHALL HAVE A HEAVY BROOM FINISH PERPENDICULAR TO SIDEWALK.
- DETECTABLE WARNINGS SHALL BE EAST JORDAN IRON WORKS 7005 SERIES CAST IRON DETECTABLE WARNING PLATES OR APPROVED EQUAL. INSTALLED PER MANUFACTURERS INSTALLATION GUIDELINES AND CONFORM TO ADAAG (4-29) "DETECTABLE WARNINGS" COLOR: ASPHALT DIPPED UNLESS OTHERWISE APPROVED BY CARSON CITY ENGINEER OR PUBLIC WORKS DIRECTOR. RADIAL DETECTABLE WARNINGS SHALL BE USED WHEN REQUIRED TO MAINTAIN MINIMUM CLEARANCE OF 3 INCHES AND MAXIMUM CLEARANCE OF 8 INCHES FROM DETECTABLE WARNINGS TO BACK FACE OF CURB. RADIAL DETECTABLE WARNINGS SHALL HAVE A RADIUS WITHIN 5 FEET OF BACK FACE OF CURB RADIUS.
- AC PAVEMENT EDGE SHALL BE 1/4 INCH TO 1/2 INCH ABOVE THE LIP OF GUTTER.
EXCEPTION: AC PAVEMENT EDGE SHALL BE FLUSH TO 1/4 INCH ABOVE THE LIP OF GUTTER WHEN LOCATED ADJACENT TO A PEDESTRIAN RAMP OR WITHIN AN ACCESSIBLE ROUTE.



NOTES:

- RETAINING CURB TO BE USED IN ALL CASES. MAINTAIN SLOPE OF SIDEWALK OUTSIDE OF CURB RAMP.
- SEE "CURB RAMP GENERAL NOTES" DWG C-5.3.1 FOR FURTHER REQUIREMENTS.

NO.	REVISION	DATE	STANDARD DETAIL FOR PUBLIC WORKS CONSTRUCTION	SECTION
1	NOTE 11	6/12		CARBON CITY

CURB RAMP GENERAL NOTES

APPROVED BY: [Signature] 6/12

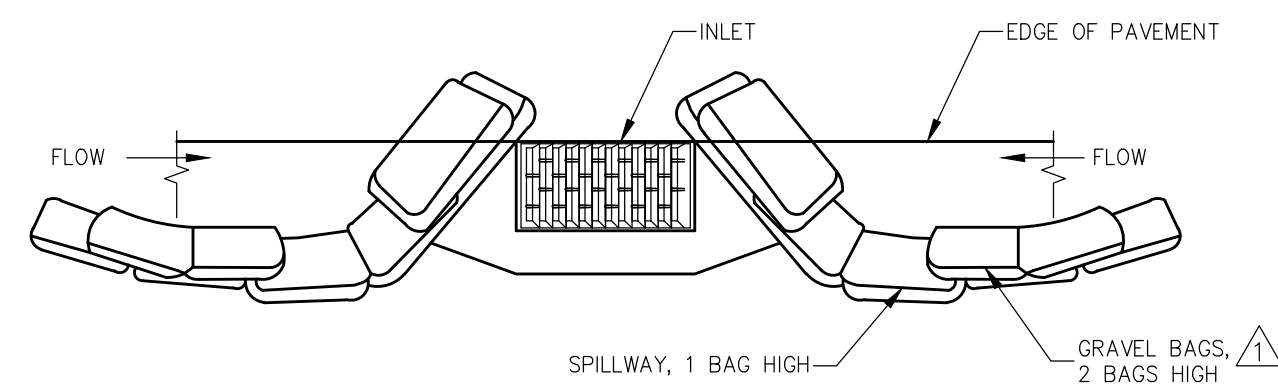
CARBON CITY
DRAWING NO. C-5.3.1
DATE 6/2012

NO.	REVISION	DATE	STANDARD DETAIL FOR PUBLIC WORKS CONSTRUCTION	SECTION
				CARBON CITY

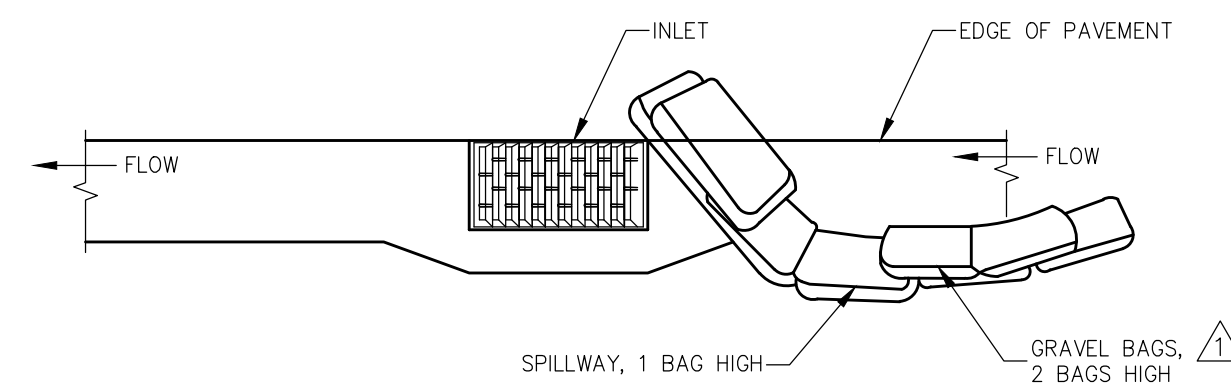
MID BLOCK CURB RAMP

APPROVED BY: [Signature] 7/09

CARBON CITY
DRAWING NO. C-5.3.9
DATE 7/2009



TYPICAL PROTECTION FOR INLET ON SUMP



TYPICAL PROTECTION FOR INLET ON GRADE

NOTES:

- INTENDED FOR TEMPORARY SHORT-TERM USE.
- USE TO MANAGE CURB WATER FLOW.
- SEDIMENT CAPTURED BEHIND GRAVEL BAGS SHALL BE REMOVED WEEKLY DURING CONSTRUCTION.
- INLET PROTECTION MUST BE PROPERLY MAINTAINED WHILE IN PLACE AND REMOVED WHEN REQUIREMENTS OF NDEP PERMIT HAVE BEEN MET.
- GRAVEL BAGS SHALL BE FILLED WITH 3/4 INCH WASHED ROCK.

NO.	REVISION	DATE	STANDARD DETAIL FOR PUBLIC WORKS CONSTRUCTION	SECTION
1	GRAVEL BAG	05/14		CARBON CITY

STORM DRAIN INLET PROTECTION

APPROVED BY: [Signature] 05/14

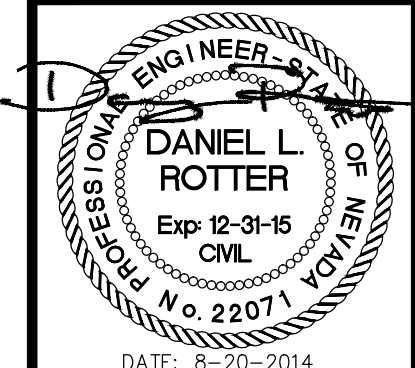
CARBON CITY
DRAWING NO. C-4.1.7
DATE 5/2014

I:\CAPITAL PROJECTS\Projects\031302.3-Nye\04\04\02\Design\DWG\03-1302-3bsd1.dwg

DESIGNED BY: ED
DRAWN BY: ED
CHECKED BY: DA
DWG NO.: 03-1302-3BS1
SCALE (HORIZ): N/A
SCALE (VERT): "X"="X"
PLOT DATE: 2014 AUG 20

**CARBON CITY
PUBLIC WORKS DEPARTMENT**

3505 BUTTI WAY CARSON CITY, NEVADA 89701
PH: 775-887-2555 FAX: 775-887-2112



REV.	DATE	DESCRIPTION	BY	APP'D

**E. NYE LANE
PEDESTRIAN IMPROVEMENTS
PROJECT No. 03.1302.3
CONSTRUCTION DETAILS**

SHEET
C6
OF
6

BID SET