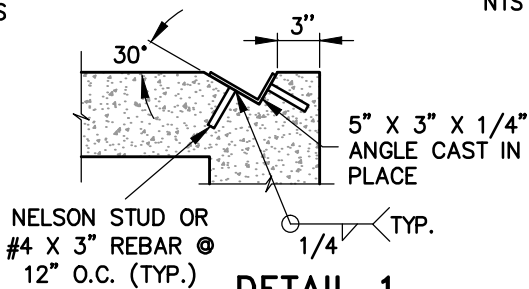


SECTION B-B

NTS

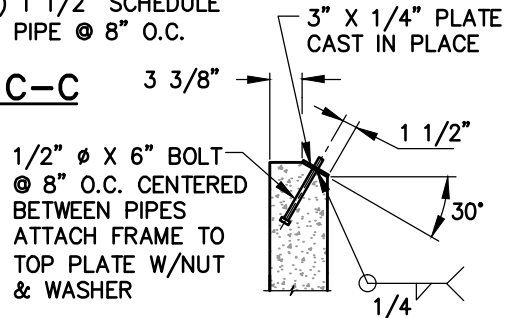
SECTION C-C

NTS



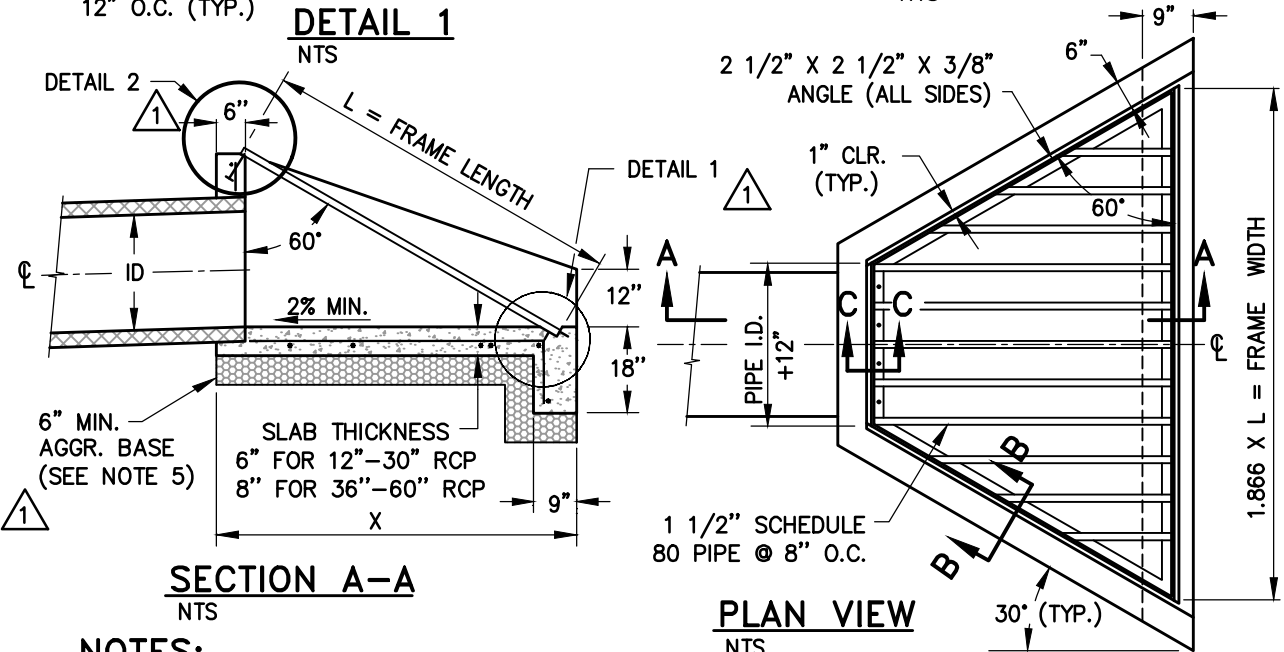
DETAIL 1

NTS



DETAIL 2

NTS



SECTION A-A

NTS

PLAN VIEW

NTS

NOTES:

1. PORTLAND CEMENT CONCRETE (P.C.C.) SHALL HAVE THE FOLLOWING CHARACTERISTICS: 4000 PSI MIN. COMPRESSIVE STRENGTH AT 28 DAYS, MIN. 6 SACKS OF CEMENT PER CUBIC YARD WITH A MAX. WATER/CEMENT RATIO OF 0.45, AIR ENTRAINMENT 6% ±1.5%, SLUMP AT 1 TO 4 INCHES. ALL MATERIALS SHALL CONFORM TO SSPWC SECTION 202.
2. REINFORCING STEEL SHALL BE NO. 5 @ 12 INCHES BOTH WAYS, SET 2 INCHES CLEAR OF CONCRETE BOTTOM SURFACE.
3. ALL METAL PARTS SHALL BE GALVANIZED AFTER WELDING.
4. ALL EXPOSED CONCRETE EDGES SHALL BE CHAMFERED 3/4 INCH.
5. PLACE A MIN. OF 6 INCHES OF TYPE 2, CLASS B AGGREGATE BASE COMPACTED TO A MIN. OF 95% UNDER ALL CONCRETE. 6 INCHES OF DRAIN ROCK MAY BE USED FOR BASE MATERIAL.

TABLE

SIZE DIA	X	L	N (EA.)
18"	5'-3"	5'-3"	9
24"	6'-1.5"	6'-3"	11
30"	7'-0"	7'-3"	15
36"	7'-10.5"	8'-3"	17
42"	8'-9"	9'-3"	19
48"	9'-7"	10'-3"	21
54"	10'-5.5"	11'-3"	23
60"	11'-4"	12'-3"	25

NO.	REVISION	DATE	STANDARD DETAIL FOR PUBLIC WORKS CONSTRUCTION	SECTION CARSON CITY
1	MISC	05/14	TRASH RACK FOR 18" TO 60" RCP	DRAWING NO. C-4.1.9
2	MISC	9/17		DATE SEP 2017
APPROVED BY:		9/17		