

# Growth Impacts on your Fire Department



# Growth Impacts on the Fire Department

- **Strategic Goal**
  - *Ensure a safe community through proactive and responsive protection of life and property.*
- **Fire Department Mission**
  - *“Service With Pride Commitment and Compassion”*

# Background

- **2001 Abbey Group- Sheriff & Fire Master Plan- Finding:**
  - Fire Department staffing is significantly below national standards
- **2008- Citizens Ad Hoc Committee- Public Safety Services recommendations:**
  - Add an additional 24 hour ambulance- Not Completed
  - Add a 40 hour ambulance (Completed 2017/ BLS ambulance)
  - Add an additional engine company- Not Completed
  - Add a new Fire Station- Not Completed

# National Fire Protection Association

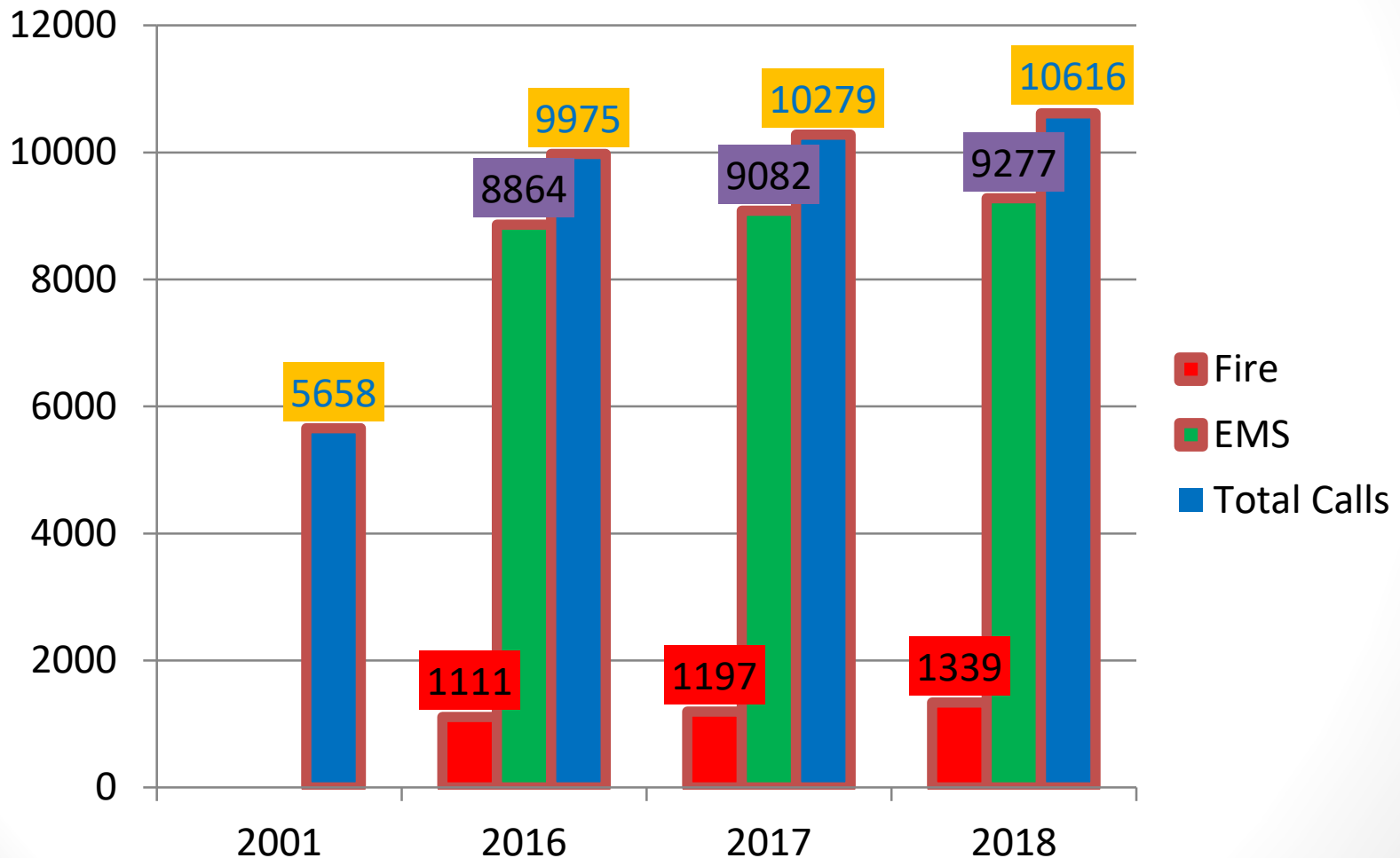
- NFPA 1710- Standard addresses Fire Department Staffing & Response times for a 2,000 sq. ft. single family dwelling
- NFPA 1710- First engine shall arrive at a fire incident in 4 minutes.
- NFPA 1710- Full first alarm of 15-17 Firefighters shall arrive in 8 minutes.
- *CCFD currently responds with 14 Firefighters (3 engines, 2 rescue ambulances & 1 Battalion Chief).*
- *CCFD Average response time for first unit = 4.5 minutes*

# Background

- Total uniformed CCFD personnel = 61
- Uniformed Personnel numbers have not increased in nearly 20 years.
- Emergency Responses have increased 82% during that period



# CCFD Call Volumes 2001-2018



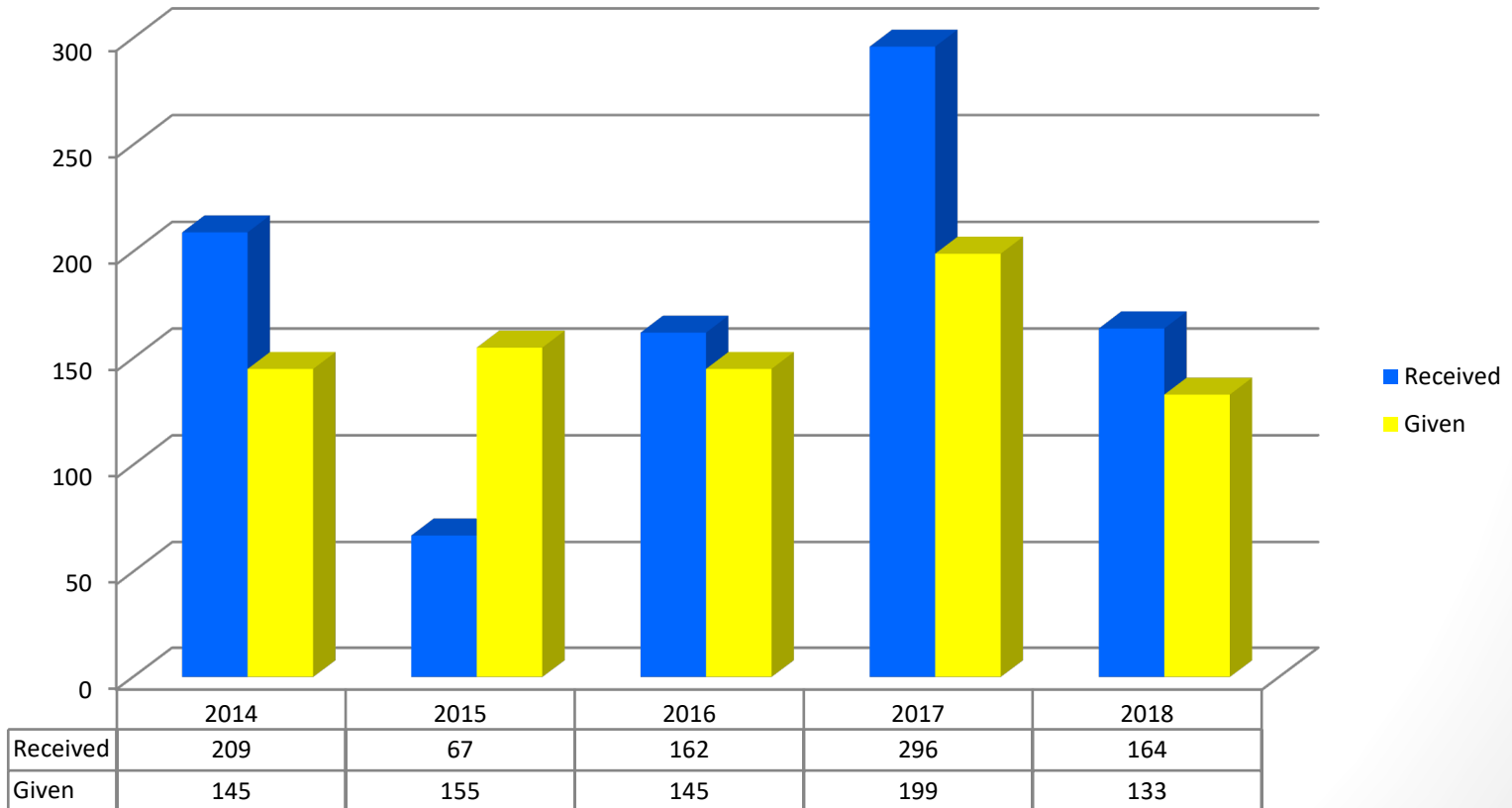
# Fire Service Growth Impacts

## **Current State of Department- Call Volume**

- 10,616 Incidents in 2018- 3.28% increase from 2017.
- Averaging a 3%-5% annual increase in incidents.
- 17,024 unit responses for 10,616 incidents.

# Mutual & Auto Aid

## MUTUAL AID - RECEIVED & GIVEN 2014 - 2018

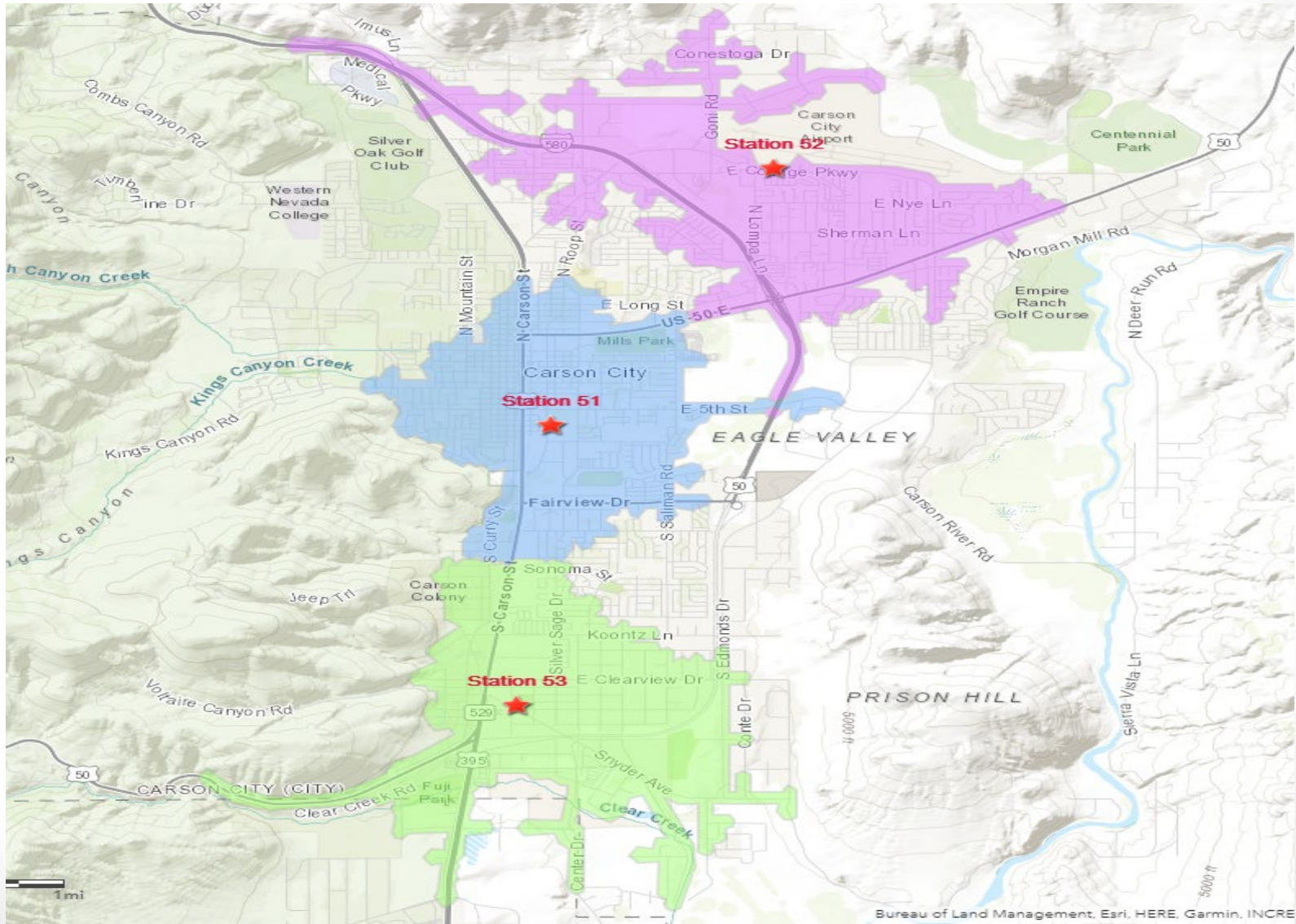




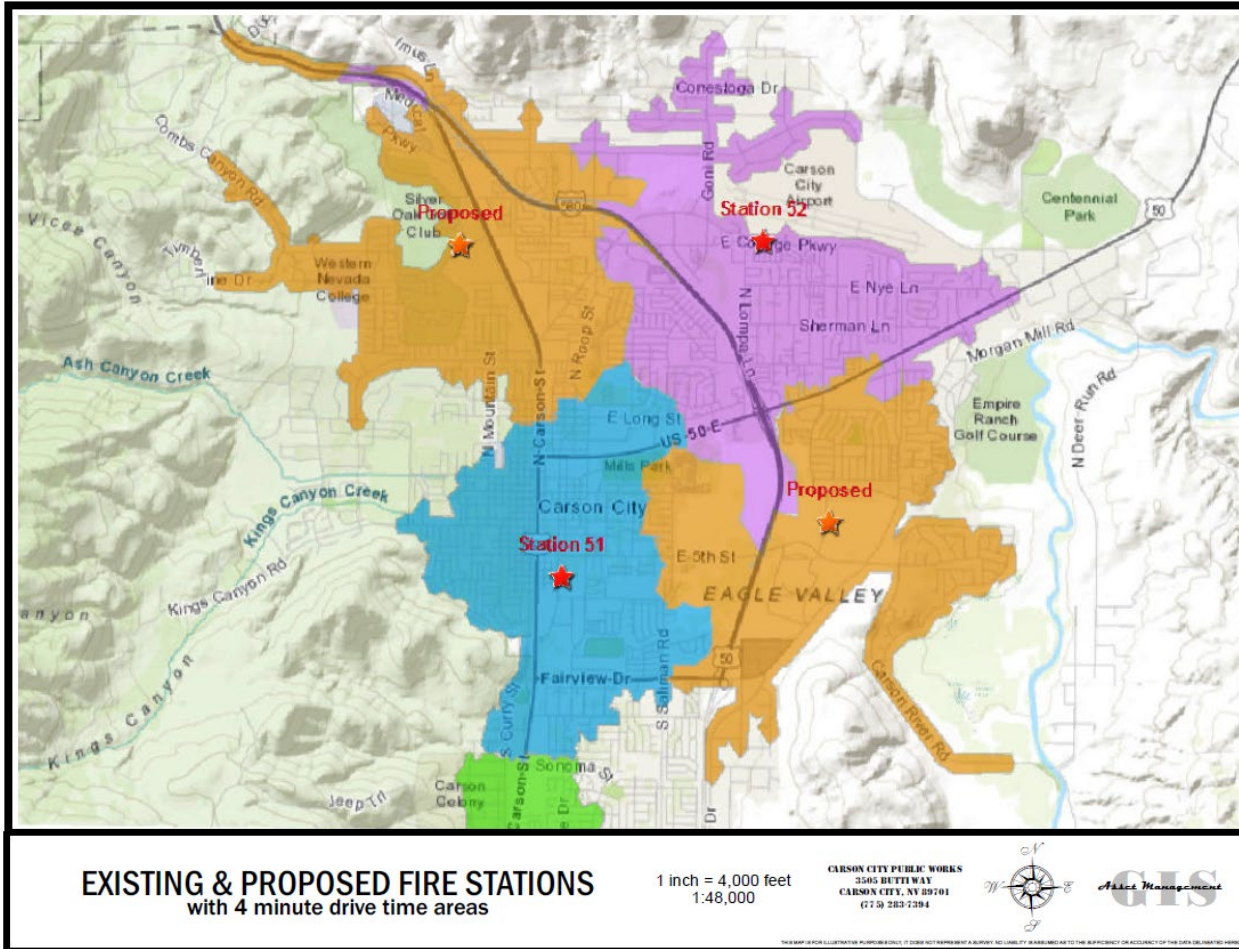
# Fire Service Growth Impacts

- Per city GIS data Carson City Fire has significant response time gaps in the North West and East sides of Carson City.
- CCFD is unable to meet city defined response times (4 minutes) in these areas.
- City growth will continue to exacerbate the response time deficiencies.

# 4 Minute Response Time



# 2 Additional Station Example



# Fire Service Growth Impacts

- Additional growth without added resources will have a negative impact on EMS and Fire protection
  - Response times will increase resulting in:
    - Reduced Cardiac and Traumatic injury save rates
    - Increased fire dollar losses
    - Increase reliance on mutual aid
    - Overstressed workforce = increase in resignations, job related injuries, sick leave.
- Fire Department needs to address growth:
  - New Fire Station- East side
  - New Fire Station- North West
  - Minimum of 1 additional staffed engine or truck at least 1 additional ambulance

# New Fire Station

- New Fire Station Build costs \$4-7 million.
- TMFPD newest station 10,000 Sq. Ft. = \$5.4 million
- Potential locations:
  - Public Works (East Side) City already owns land.
  - Station 54 next to WNC (West Side) Small lot but may be able to build 2 story station.
  - Carson City added Station 52 & 53 in 1974
    - Per US Census Carson City Population
      - 1970= 15,468
      - 1980= 32,022
      - 2010= 55,274
  - No additional stations since 1974

# New Fire Station

- **Additional Needs for Carson City Public Safety**

- Formal Emergency Operations Center (EOC)

- Current EOC is classroom at FS 51
- Lack of space
- Limited IT capabilities

- Alternate PSAP (Dispatch Center)

- No backup site if current dispatch center goes down
  - Flood, fire, Building Damage etc.

**\*Rooms can be Dual/Multi use**

# Additional Staffing

## One Additional Engine Company

- 12 New Personnel
  - 3 Captains
  - 3 Driver Operators
  - 6 Firefighters\*
- Estimated Cost \$2.1 Million

## Single Role Ambulance

- Move 12 existing FF/PM from Ambulances to new Engine
- Hire 12 new single role EMT/Paramedics
- Estimated Cost \$1.3 Million

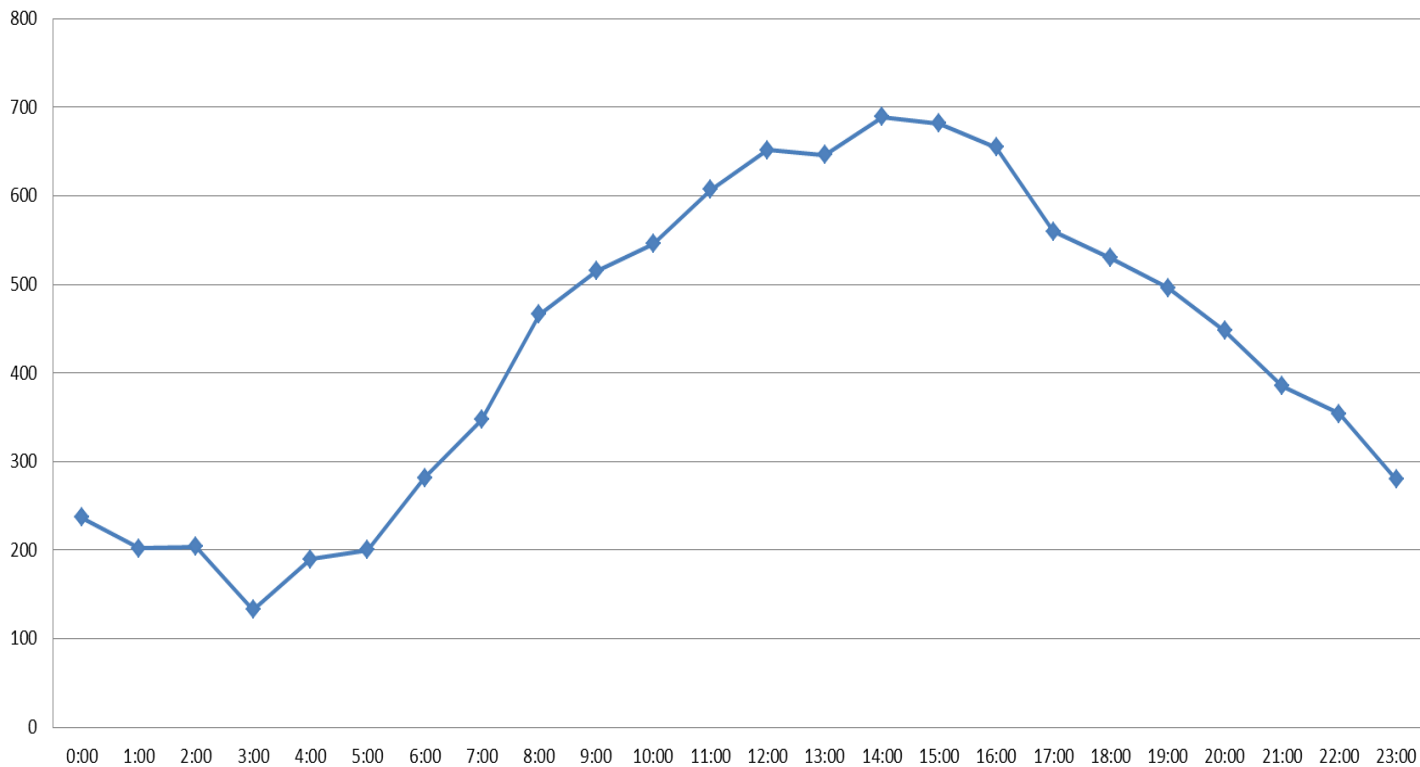
# Single Role Ambulance Advantages

- Moves Firefighter Paramedics to staff new station
- System reliability increases- FF's not transporting patients
- More flexibility in scheduling-
  - \*Allows for increased ambulances during peak hours.
- Significant cost savings from traditional model (salaries & benefits)
- Potential Overtime reduction by adding part time Paramedics and EMTs?



# EMS Responses Time of Day

Carson City Fire Department  
Number of EMS Responses Per Hour  
July 2017-June 2018



# Potential Funding Sources

- **Use GEMT reimbursement for additional personnel.**
  - Avg. \$1.2 million per year
- **Ambulance transport fee increase.**
  - Last increase was in 2007
- **Cost Recovery for vehicle accidents, rescues, hazmat etc.**
- **Impact Fees for new development**
  - Can only be used for new station. Not vehicles or employees
- **SAFER Grant**
  - 3 year grant- pays 75% of employee cost first two years. 35% the third year
- **Public Safety Tax**

# Questions - Comments

