

Middle School Attendance Zones – Rezoning Proposal

Carson City School District

February 20, 2020

Reasons For Rezoning



- Equity
- Efficiency
- Safety

Example Analysis

Carson Middle School

- 2019-20 **Capacity** – 1260
- 2019-20 **Enrollment** – 1271
- 2024-25 Projected Enrollment – 1436
- 2024-25 Projected Zone DRAFT – 986
- Phase I Approximate Impact – **1,185**

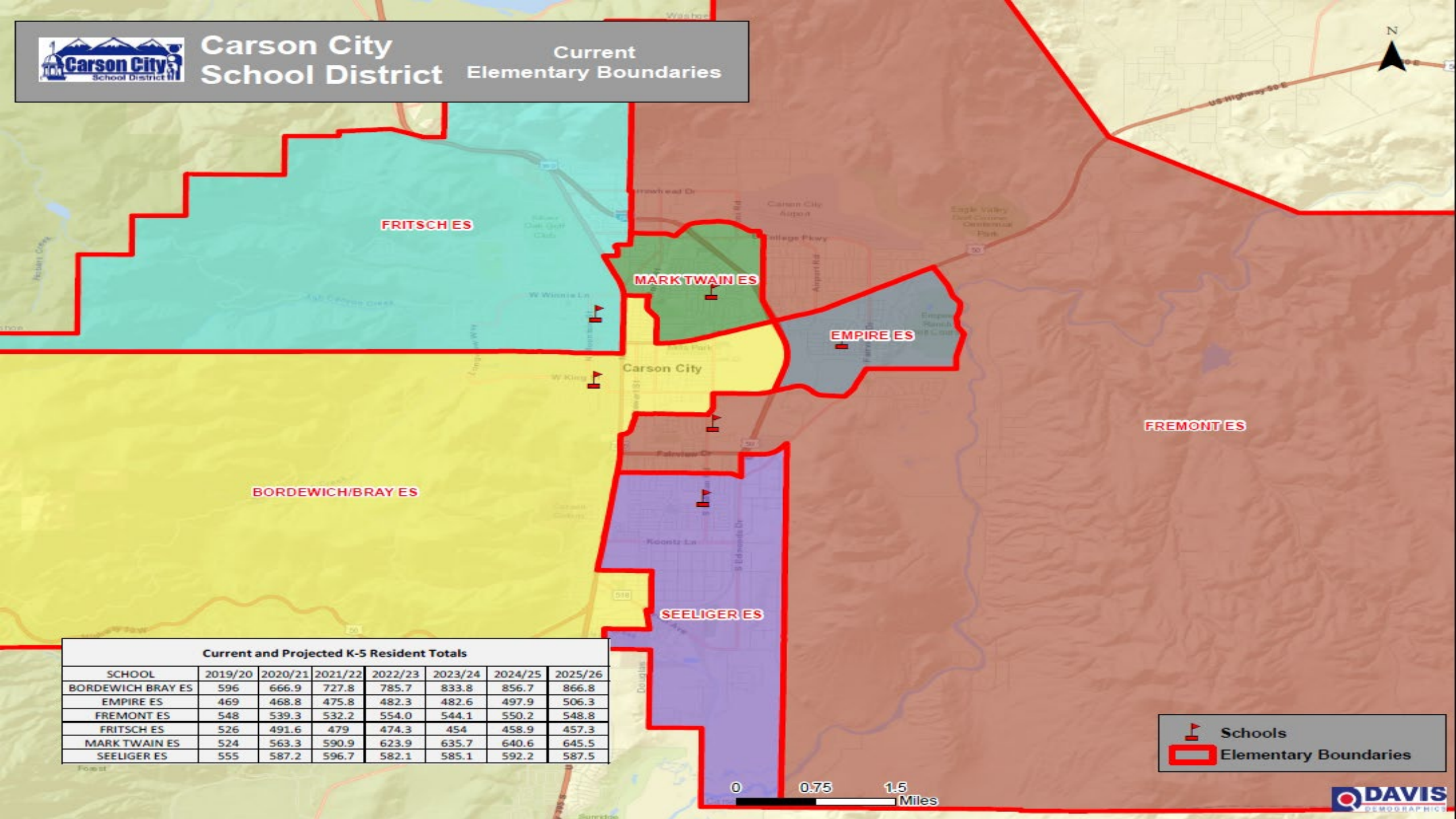
Eagle Valley Middle School

- 2019-20 **Capacity** – 731
- 2019-20 **Enrollment** – 653
- 2024-25 Projected Enrollment – 541
- 2024-25 Projected Zone DRAFT - 991
- Phase I Approximate Impact - **753**



Carson City School District

Current Elementary Boundaries



Current and Projected K-5 Resident Totals

SCHOOL	2019/20	2020/21	2021/22	2022/23	2023/24	2024/25	2025/26
BORDEWICH BRAY ES	596	666.9	727.8	785.7	833.8	856.7	866.8
EMPIRE ES	469	468.8	475.8	482.3	482.6	497.9	506.3
FREMONT ES	548	539.3	532.2	554.0	544.1	550.2	548.8
FRITSCH ES	526	491.6	479	474.3	454	458.9	457.3
MARK TWAIN ES	524	563.3	590.9	623.9	635.7	640.6	645.5
SEELIGER ES	555	587.2	596.7	582.1	585.1	592.2	587.5

- Schools
- Elementary Boundaries

0 0.75 1.5 Miles

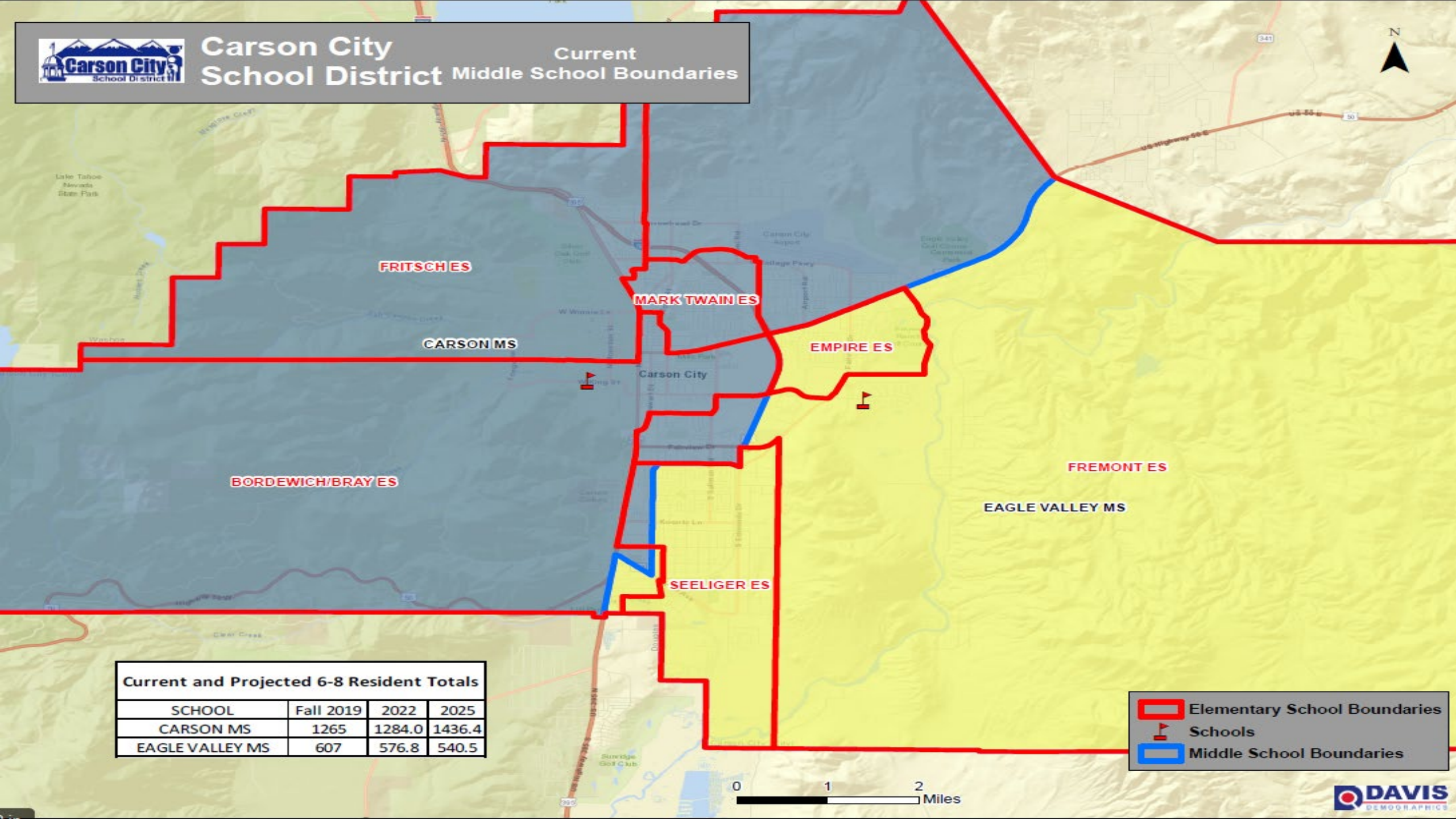




Carson City School District Middle School Boundaries


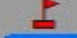
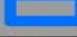
Current

Middle School Boundaries



Current and Projected 6-8 Resident Totals

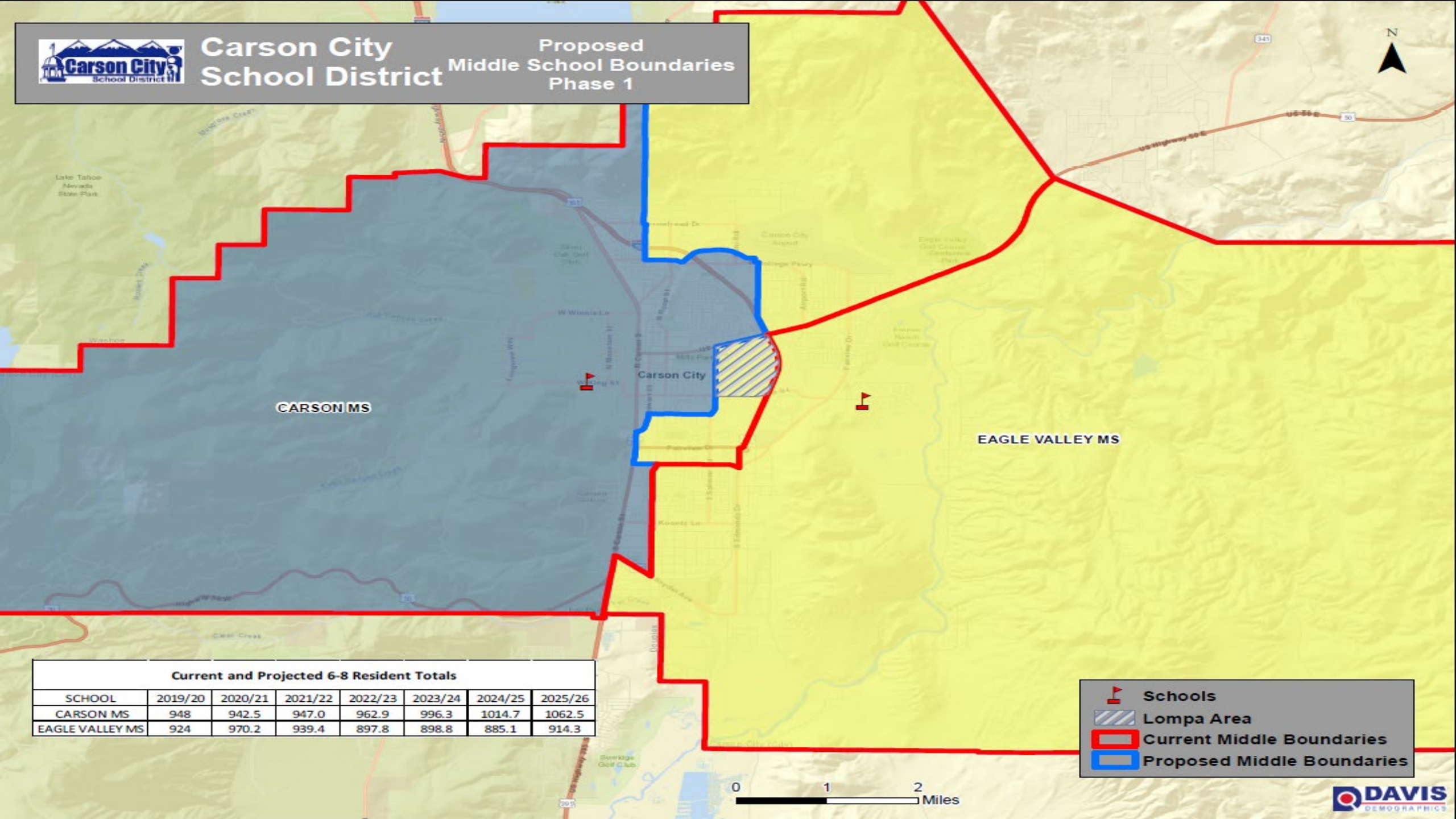
SCHOOL	Fall 2019	2022	2025
CARSON MS	1265	1284.0	1436.4
EAGLE VALLEY MS	607	576.8	540.5

-  Elementary School Boundaries
-  Schools
-  Middle School Boundaries



Carson City School District

Proposed Middle School Boundaries Phase 1



CARSON MS

EAGLE VALLEY MS

Carson City

Current and Projected 6-8 Resident Totals

SCHOOL	2019/20	2020/21	2021/22	2022/23	2023/24	2024/25	2025/26
CARSON MS	948	942.5	947.0	962.9	996.3	1014.7	1062.5
EAGLE VALLEY MS	924	970.2	939.4	897.8	898.8	885.1	914.3

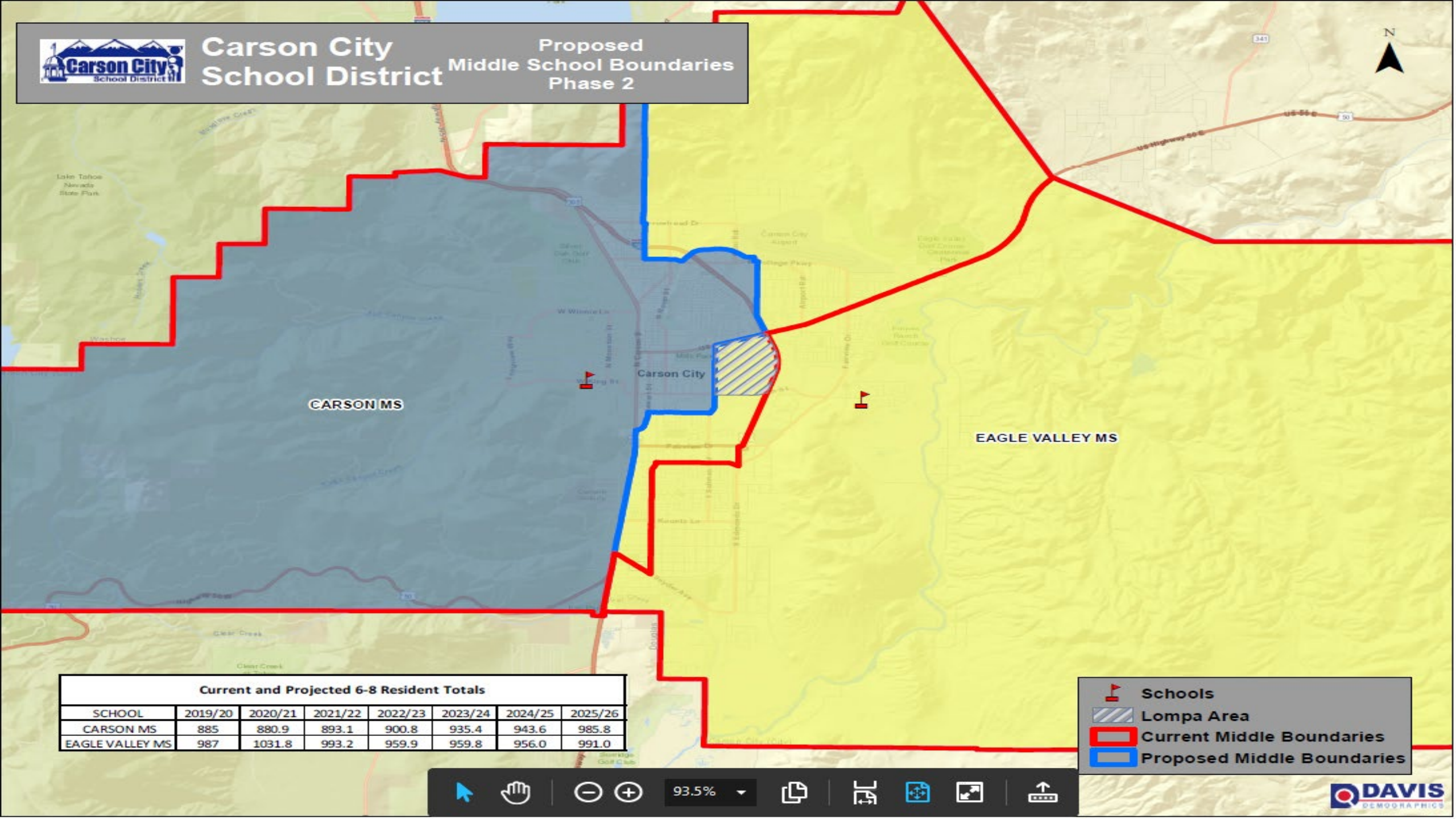
-  Schools
-  Lompa Area
-  Current Middle Boundaries
-  Proposed Middle Boundaries





Carson City School District

Proposed Middle School Boundaries Phase 2



CARSON MS

EAGLE VALLEY MS

Carson City

Current and Projected 6-8 Resident Totals

SCHOOL	2019/20	2020/21	2021/22	2022/23	2023/24	2024/25	2025/26
CARSON MS	885	880.9	893.1	900.8	935.4	943.6	985.8
EAGLE VALLEY MS	987	1031.8	993.2	959.9	959.8	956.0	991.0

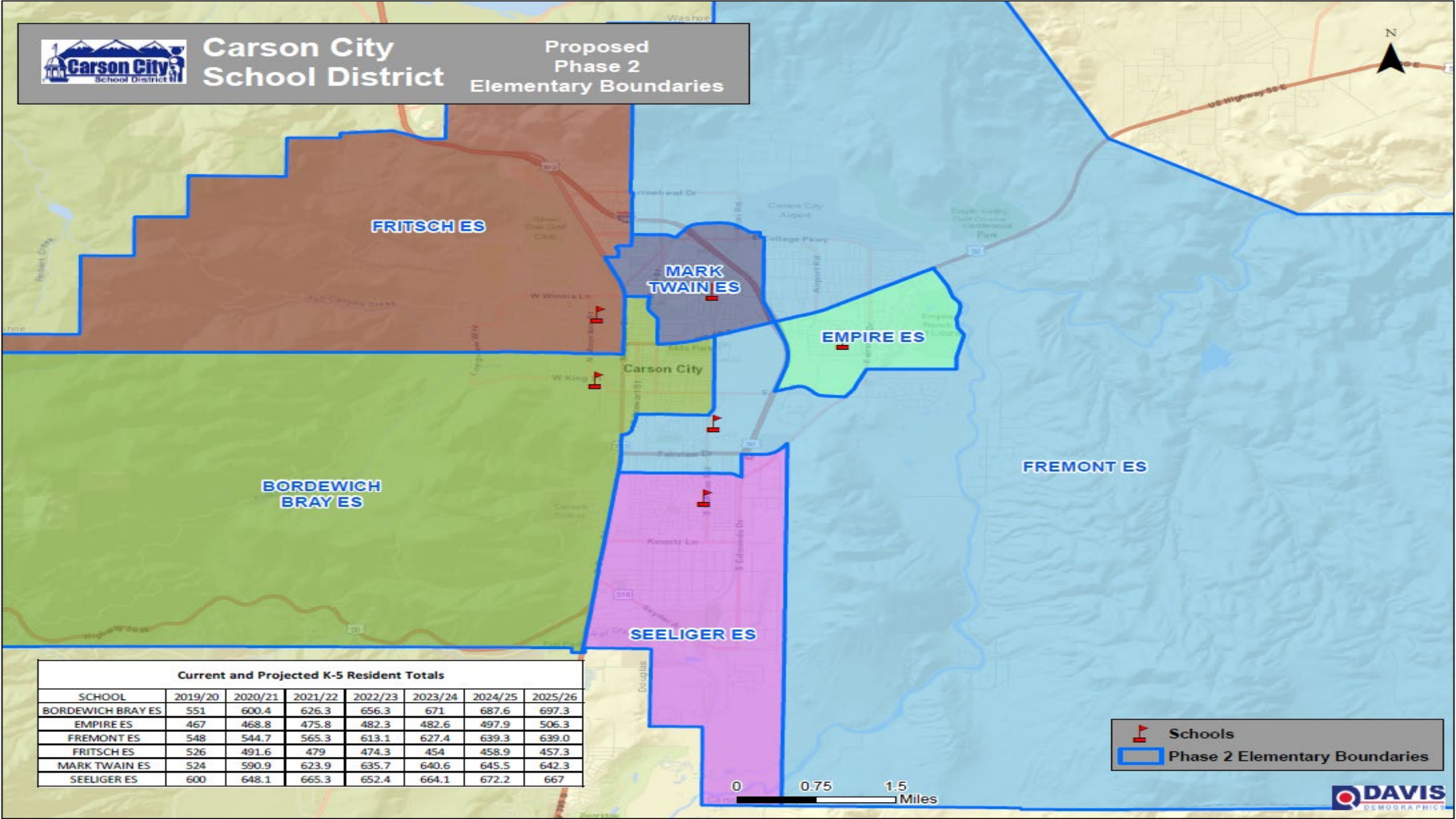
-  Schools
-  Lompa Area
-  Current Middle Boundaries
-  Proposed Middle Boundaries

Map navigation controls including a mouse cursor, hand icon, zoom in (+) and zoom out (-) buttons, a zoom level dropdown set to 93.5%, a print icon, a full screen icon, a home icon, and an expand/collapse icon.



Carson City School District

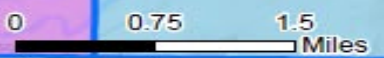
Proposed Phase 2 Elementary Boundaries



Current and Projected K-5 Resident Totals							
SCHOOL	2019/20	2020/21	2021/22	2022/23	2023/24	2024/25	2025/26
BORDEWICH BRAY ES	551	600.4	626.3	656.3	671	687.6	697.3
EMPIRE ES	467	468.8	475.8	482.3	482.6	497.9	506.3
FREMONT ES	548	544.7	565.3	613.1	627.4	639.3	639.0
FRITSCH ES	526	491.6	479	474.3	454	458.9	457.3
MARK TWAIN ES	524	590.9	623.9	635.7	640.6	645.5	642.3
SEELIGER ES	600	648.1	665.3	652.4	664.1	672.2	667

Schools

Phase 2 Elementary Boundaries



Variance Policies

- 5th Grade Fremont Elementary Students will be allowed to attend CMS with a variance application
- Transportation WILL NOT be provided
- Behavior, attendance and academic standing must be satisfactory
- Variances expire at the end of each school year and must be renewed annually

Rezoning Notifications and Schedule of Events

- Open School Board Meetings
 - January 28, 2020 – hold public meetings to Introduce and Receive Feedback Regarding Middle School Rezoning
 - March 10, 2020 – Request Authorization to Implement Phase I Middle School Rezoning
- Notification to all Residents of Fremont Elementary
- Neighborhood Meeting at EVMS – Feb. 12, 2020
- Neighborhood Meeting at CMS – Feb. 13, 2020
- Neighborhood Meeting at Fremont Elementary School – Feb. 27, 2020
- Phase 1 Middle School Rezoning – Effective - 2020-2021 School Year
- Phase 2 Middle School Rezoning – Effective – 2022-2023 School Year

Questions?