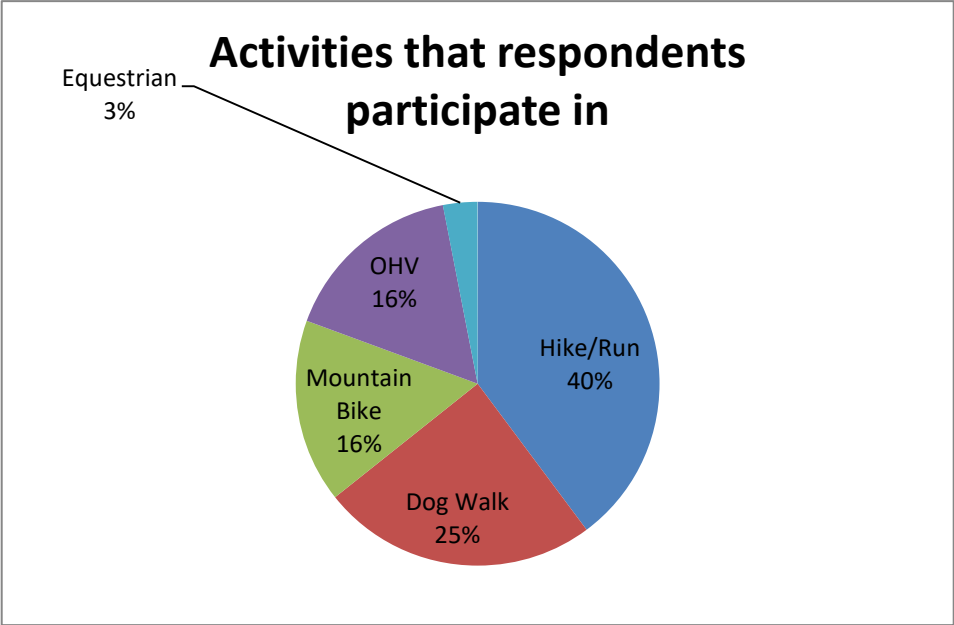
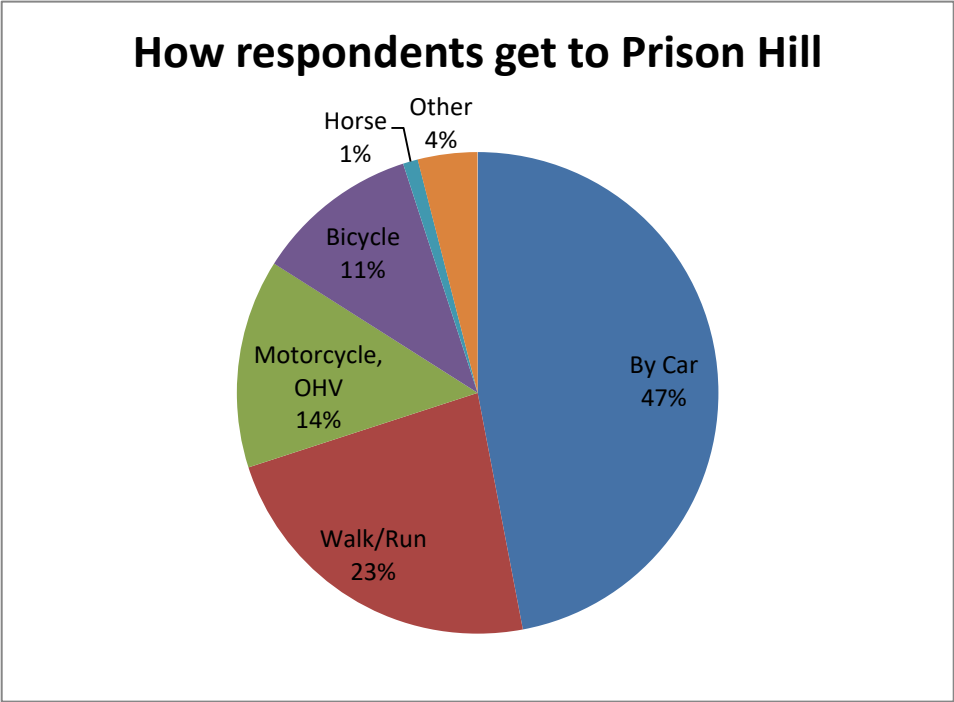


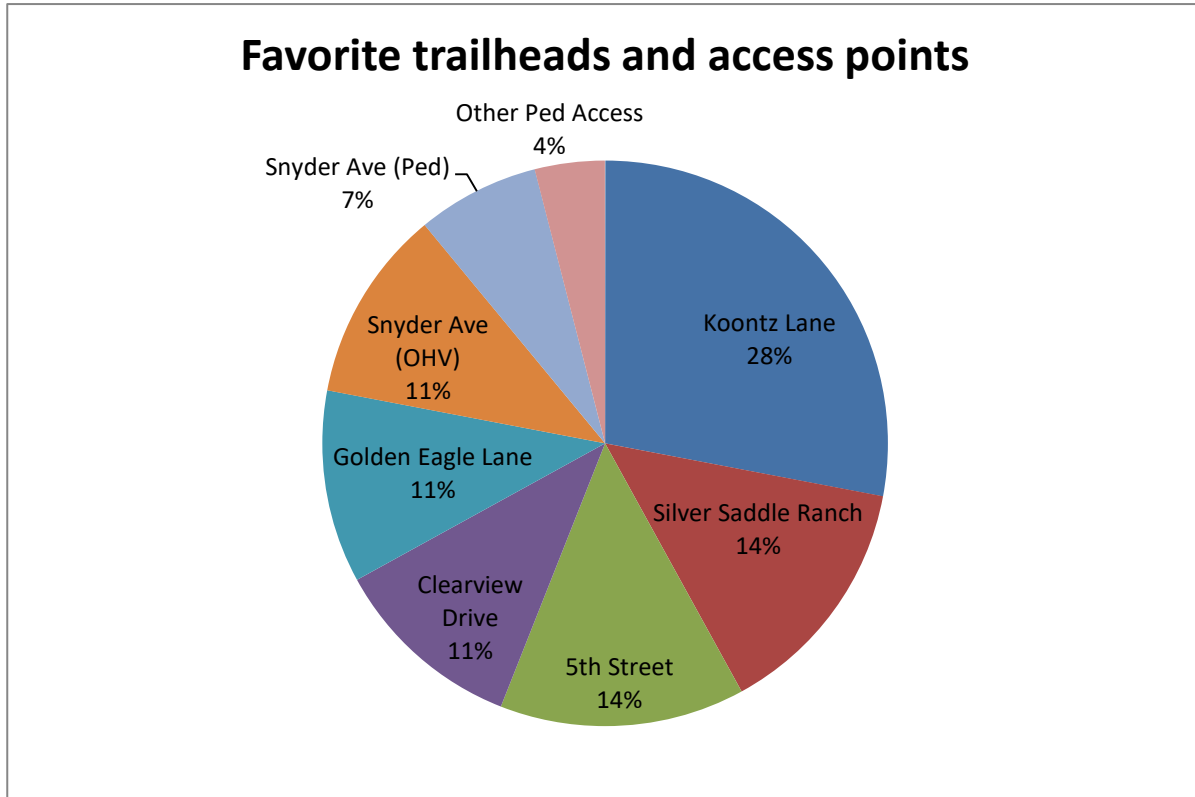
Summarized Results of the 2019 Prison Hill Master Plan Survey

There were 190 responses to the survey, and 99% of the respondents reported that they recreate on Prison Hill at least monthly.



Trailheads and access points:

Prison Hill has five trailheads with parking, one OHV access point with no parking, and five pedestrain access points with no parking. The pedestrain access points are most commonly used by nearby residents.



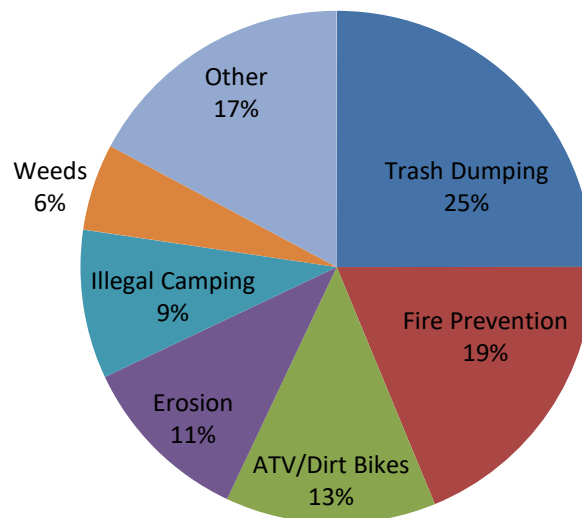
Trailhead amenities:

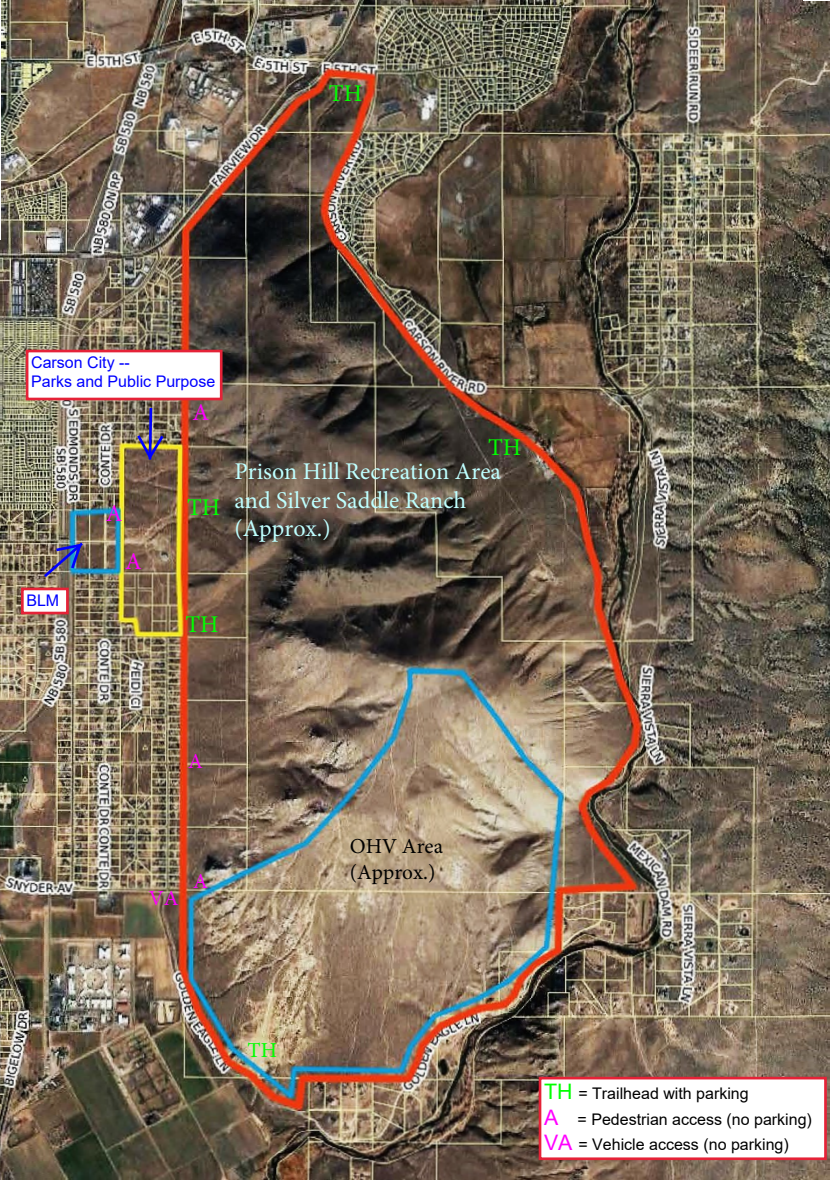
In general, respondents didn't want to see a lot of amenities at the trailheads other than parking, signage, trash can, mutt-mitt station, and in some cases a restroom and picnic shelter. Several respondents commented that they would like to have drinking water at trailheads.

Questions pertaining to the Koontz Lane property (designated as “Parks and Public Purpose”):

- 68% of respondents feel it is important for Carson City to pursue permanent recreational access through the BLM parcels and make improvements to the road leading to the Koontz Lane trailhead.
- What level of vehicle access is acceptable?
 - 37% of respondents would prefer no motor vehicle access (other than roads leading to trailheads).
 - 25% would like to see limited vehicle access.
 - 35% would allow unlimited vehicle access to continue.
- 61% of respondents would like to see physical barriers to reduce unauthorized motorized uses.
- 64% of respondents would like the City to reduce the number of roads and then revegetate these areas.
- A few respondents commented that they would like a cross-walk across Edmonds Drive at Koontz Lane.

Biggest issues/concerns reported by respondents





Carson City --
Parks and Public Purpose

Prison Hill Recreation Area
and Silver Saddle Ranch
(Approx.)

BLM

OHV Area
(Approx.)

- TH = Trailhead with parking
- A = Pedestrian access (no parking)
- VA = Vehicle access (no parking)