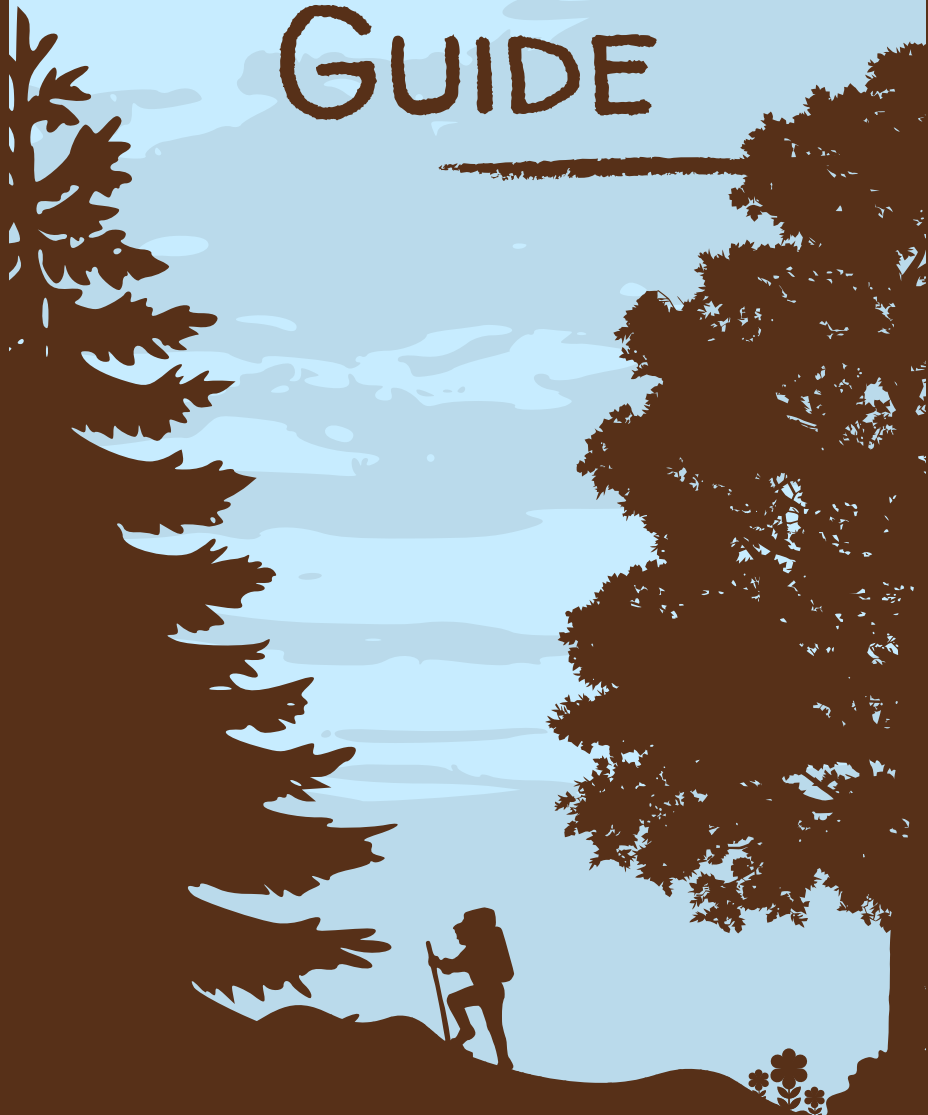




JUNIOR PARK RANGER
ADVENTURE
GUIDE



CARSON CITY, NEVADA

FOR GRADES 1-6

JUNIOR PARK RANGER

THIS ADVENTURE GUIDE BELONGS TO:

WELCOME TO THE CARSON CITY PARKS, RECREATION & OPEN SPACE DEPARTMENT JUNIOR PARK RANGER ADVENTURE GUIDE! CARSON CITY IS LUCKY TO HAVE MANY PARKS AND OPEN SPACE THAT OFFER GREAT OUTDOOR OPPORTUNITIES. ENJOY WORKING THROUGH THIS GUIDE AND LEARNING MORE ABOUT THE AREAS THAT WE, AND OUR WILDLIFE FRIENDS, CALL HOME!

TO BECOME AN OFFICIAL CARSON CITY JUNIOR PARK RANGER:

- WORK THROUGH THIS GUIDE AS BEST AS YOU CAN
- PLAN YOUR OWN ADVENTURE ON PG. 4
- VISIT CARSON RIVER PARK ON PG. 6
- COMPLETE AT LEAST THREE OF THE OUTDOOR ACTIVITIES ON PG. 8
- JOIN A CARSON CITY PARK RANGER ON AT LEAST ONE EDUCATIONAL PROGRAM

ADULTS:



EARN THIS JUNIOR
PARK RANGER
PATCH!



WHEN THE REQUIREMENTS HAVE BEEN COMPLETED, FIND THE PARK RANGER-LED PROGRAMS PAGE AT WWW.CARSON.ORG/PARKSANDREC TO LEARN HOW YOUR NEW JR. PARK RANGER CAN GET A SWEARING IN.



CHALLENGE YOUR CHILDREN AND/OR STUDENTS TO THINK OF WAYS TO BE GOOD STEWARDS AND PRACTICE LEAVE NO TRACE WHILE COMPLETING THIS BOOK!

TABLE OF CONTENTS

PARKS AND OPEN SPACE	Pg. 2
LEAVE NO TRACE	Pg. 3
PLAN YOUR ADVENTURE	Pg. 4
OUTDOOR SAFETY	Pg. 5
ORIENTEERING	Pg. 6
OUTDOOR ACTIVITIES	Pg. 8
PRISON HILL BINGO	Pg. 9
TRAIL FRIENDS	Pg. 10
SCORPION SEARCH	Pg. 11
LIVIN' IN COYOTE COUNTRY	Pg. 12
SAGE BRUSH OBSERVATION	Pg. 13
CARSON RIVER WATERSHED	Pg. 14
KINGS CANYON CROSSWORD	Pg. 16
PARK RANGER ACTIVITIES	Pg. 17
NATURE JOURNAL	Pg. 19
REQUIREMENTS AND OATH	Pg. 20

FOR DETAILED LOCATION INFORMATION ON ANY OF OUR PARKS, TRAILS OR OPEN SPACE AREAS THAT YOU FIND IN THIS ACTIVITY GUIDE, VISIT WWW.CARSON.ORG/PARKSANDREC OR BY CONTACTING US DIRECTLY AT (775) 887-2262.

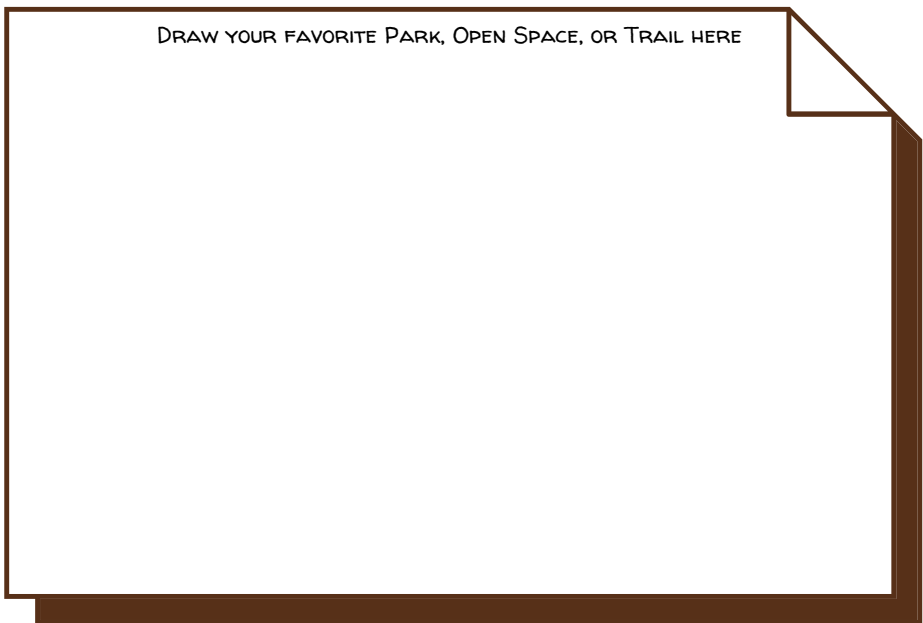
PARKS AND OPEN SPACE

CARSON CITY HAS OVER 20 PARKS, 70 MILES OF TRAILS AND 8,000 ACRES OF OPEN SPACE! CAN YOU COLOR IN THE NAMES OF THE AREAS YOU'VE BEEN TO?

MILLS PARK

RIVERVIEW PARK
Fuji PARK
JOHN MANKINS
Shultz Ranch
CARSON RIVER CANYON
Sunset Park
MORAN HILL
Long Mountain
MONTE VISTA
Archery Range
Mayor's Park
AMBROSE
STEINHEIMER PARK
Carson River Natural Area
Silver Saddle Ranch
Sonoma Park
Carriage Square Park
Carson Ridge Disc Golf Course
Eagle View Open Space
Wildhorse PARK Trail
TERRACE
Kings Canyon
RONALD D. WILSON
Rifle and Pistol Range
Blackamont's pond
S. Stone-Hever
Pete Livermore Sports Complex
Winters
Centennial Park
CARSON RIVER PARK
Long Ranch
MIOGSSOJ
Long Ranch

DRAW YOUR FAVORITE PARK, OPEN SPACE, OR TRAIL HERE



LEAVE NO TRACE

WHEN WE ARE OUTSIDE, IT'S IMPORTANT TO PRACTICE THE SEVEN PRINCIPLES OF LEAVE NO TRACE. FILL IN THE BLANKS ON THIS SHEET USING SOME OF THE WORDS FROM THE BOX.

PLAN AHEAD AND PREPARE

MAKE SURE YOU KNOW THE RULES FOR THE AREA YOU PLAN TO VISIT. ALSO, BE PREPARED AND CHECK THE _____ FORECAST SO YOU KNOW WHAT TO PACK. SCHEDULE YOUR TRIP TO AVOID TIMES WHEN THERE ARE TOO MANY _____ USING THE AREA.

TRAVEL AND CAMP ON DURABLE SURFACES

ALWAYS TRAVEL ON DURABLE SURFACES LIKE _____, ESTABLISHED TRAILS, DRY GRASSES, GRAVEL, AND SNOW. WHEN YOU ARE IN AN AREA THAT ALLOWS CAMPING, ALWAYS CAMP AT LEAST 200 FEET FROM THE NEAREST TRAIL AND _____ SOURCE. WHEN TRAVELING IN A GROUP, WALK IN A SINGLE FILE LINE, IN THE MIDDLE OF THE TRAIL, EVEN WHEN IT'S _____ AND MUDDY.

DISPOSE OF WASTE PROPERLY

IF YOU _____ IT IN, YOU MUST PACK IT OUT! PACK OUT ALL TRASH, LEFTOVER FOOD, AND LITTER. IF YOU NEED TO "GO", ALWAYS FIND AN AREA 200 FEET FROM THE NEAREST _____ AND WATER SOURCE. DIG A HOLE AT LEAST SIX INCHES DEEP AND SIX INCHES WIDE.

LEAVE WHAT YOU FIND

PRESERVE THE ENVIRONMENT YOU ARE IN. EXAMINE, BUT DO NOT TOUCH. LEAVE ROCKS, _____ AND OTHER NATURAL OBJECTS THAT YOU FIND. IF YOU ADMIRE THEM, SOMEONE ELSE PROBABLY DOES TOO. DO NOT BUILD _____, FURNITURE, OR DIG TRENCHES

MINIMIZE CAMPFIRE IMPACTS

ONLY BUILD _____ IN AREAS THAT ALLOW THEM. ONLY USE EXISTING FIRE RINGS. NEVER BUILD ONE.

RESPECT WILDLIFE

OBSERVE WILDLIFE FROM A DISTANCE, NEVER APPROACH OR FEED THEM. KEEP YOUR _____ ON LEASH TO AVOID CONTACT WITH WILD ANIMALS.

BE CONSIDERATE OF OTHER VISITORS

LET THE SOUNDS OF NATURE PREVAIL, AVOID LISTENING TO LOUD MUSIC. BE _____ TO OTHERS BY LETTING THEM PASS YOU ON THE TRAIL AND TRY TO TAKE BREAKS OFF TRAIL.

HIPPOS COURTEOUS TRAIL ROCKS CAMPFIRES
WEATHER CUPCAKES RAINBOWS CHICKENS FORTS SMORGASBORD
COLLYWOBBLES WET PACK PETS GOOFY
LOLLYGAG PEOPLE UNICORNS MONSTERS STINKY PLANTS 'SMORES

PLAN YOUR ADVENTURE

PLANNING YOUR OUTDOOR ACTIVITY IS THE MOST IMPORTANT STEP. YOU NEED TO RESEARCH WHERE TO GO AND POSSIBLE ROUTES; WHAT EQUIPMENT AND ITEMS YOU WILL NEED TO BRING; CHECK THE WEATHER FORECAST; AND TELL SOMEONE WHERE YOU'RE GOING AND WHEN YOU'LL BE BACK. USE THIS FORM TO HELP PLAN YOUR NEXT TRIP TO THE OUTDOORS.

NAME: _____

START DATE: _____ START TIME: _____

RETURN DATE: _____ RETURN TIME: _____

PURPOSE OF TRIP: _____

DESTINATION: _____

IF USING A TRAIL, DESCRIBE YOUR ROUTE:

WEATHER FORECAST: _____

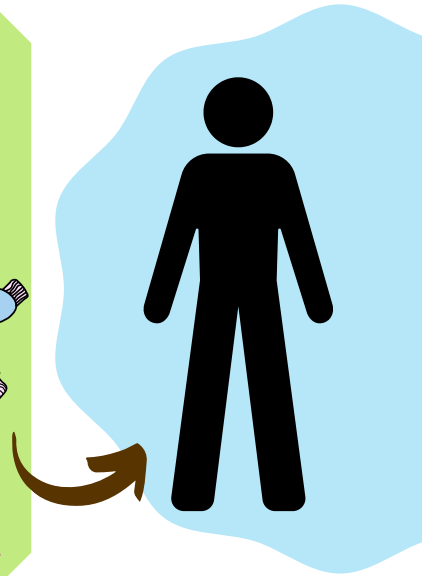
EQUIPMENT NEEDED: _____

HOW MANY PEOPLE ARE GOING WITH YOU: _____

OUTDOOR SAFETY

BEFORE LEAVING ON YOUR ADVENTURE, IT'S IMPORTANT TO PACK APPROPRIATELY AND BE PREPARED! PRETEND YOU JUST PLANNED AN ADVENTURE UP KINGS CANYON IN JANUARY. YOU WILL PROBABLY ENCOUNTER SOME WINTER WEATHER, SO PICK OUT THE APPROPRIATE CLOTHING AND MAKE SURE TO PACK YOUR BACKPACK WITH HIKING ESSENTIALS.

CIRCLE THE ITEMS YOU SHOULD WEAR



CIRCLE THE ITEMS YOU SHOULD BRING



ORIENTEERING

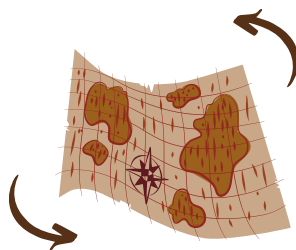
NOW THAT YOU'VE PLANNED YOUR ADVENTURE, LEARNED HOW TO PACK SAFELY, AND TRAVEL USING LEAVE NO TRACE PRINCIPLES, TAKE A TRIP TO CARSON RIVER PARK TO PUT YOUR SKILLS TO THE TEST. USE THE MAP ON THE NEXT PAGE TO COMPLETE THIS SHORT HIKING ACTIVITY.

NEVER EAT SOGGY WAFFLES

A JUNIOR PARK RANGER SHOULD ALWAYS KNOW WHERE THEY ARE AND HOW THEY GOT THERE. TWO GREAT TOOLS WE USE TO HELP US WITH THAT ARE A MAP AND A COMPASS. BOTH TOOLS REQUIRE YOU TO KNOW FOUR IMPORTANT DIRECTIONS: NORTH, EAST, SOUTH, AND WEST. A GREAT WAY TO REMEMBER THEM IS BY SAYING, NEVER EAT SOGGY WAFFLES.



THE BEST WAY TO USE BOTH TOOLS IS BY POINTING THE NORTH SYMBOL FROM THE COMPASS ON THE MAP IN THE SAME DIRECTION THAT THE ARROW IS POINTING ON YOUR COMPASS IN YOUR HAND. THE ARROW ON YOUR COMPASS ALWAYS POINTS NORTH. GET WITH A PARK RANGER TO LEARN MORE ABOUT ORIENTEERING.



TURN THE MAP SO IT MATCHES THE ARROW

N _____ S _____
E _____ W _____

CARSON RIVER PARK SCAVENGER HUNT

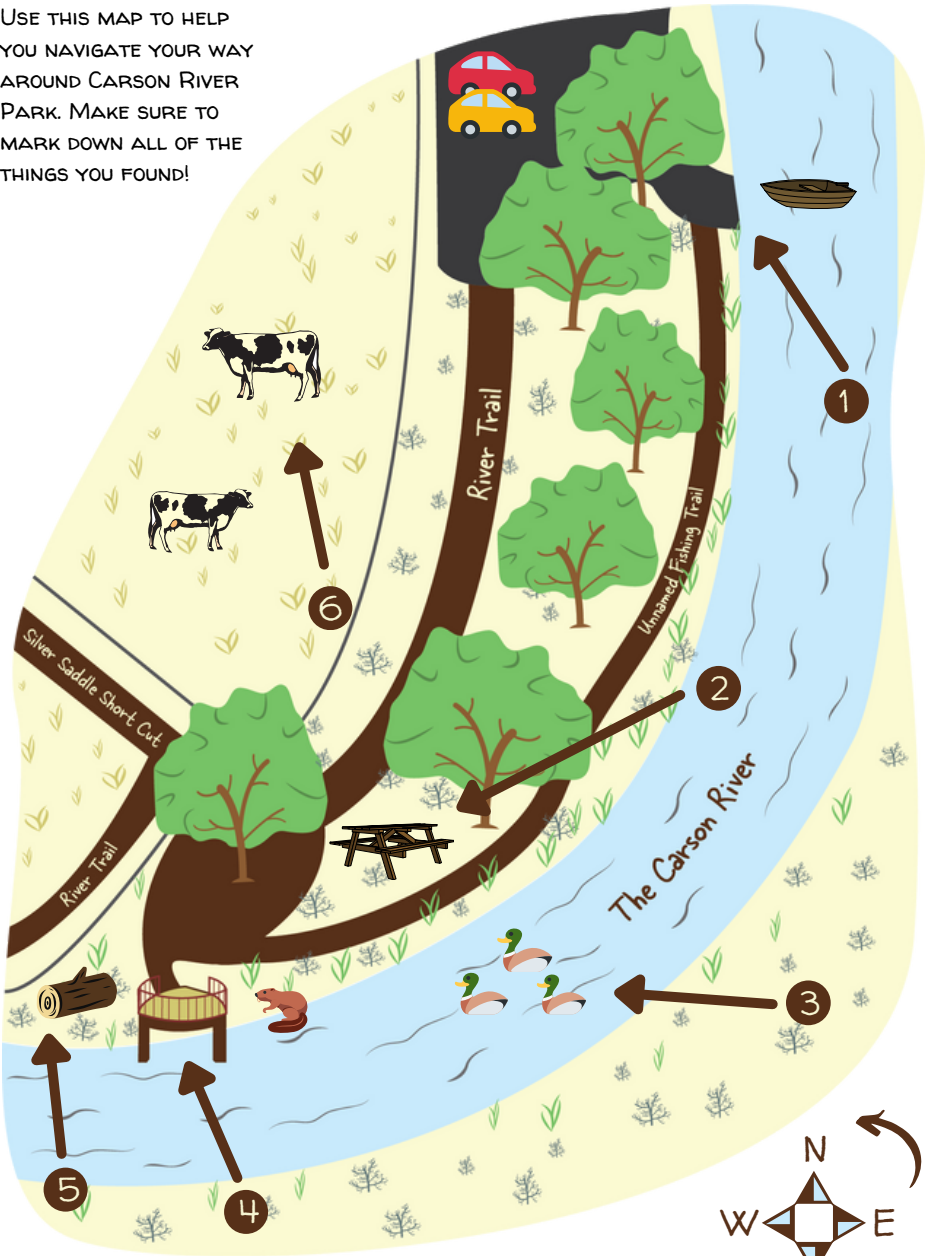
START YOUR SCAVENGER HUNT IN THE PARKING LOT OF CARSON RIVER PARK. BRING ALONG YOUR COMPASS IF YOU HAVE ONE AND A PAIR OF BINOCULARS. USE THE MAP ON THE NEXT PAGE TO NAVIGATE YOUR WAY AROUND THE PARK AND FIND EVERYTHING THE ARROWS ARE POINTING TO. USE THIS LIST TO HELP YOU KEEP TRACK OF EVERYTHING YOU FIND.

- | | | | |
|----------------------|--------------------------|-----------------|--------------------------|
| 1. BOAT LAUNCH | <input type="checkbox"/> | 4. FISHING DECK | <input type="checkbox"/> |
| 2. PICNIC TABLE | <input type="checkbox"/> | 5. DECAYING LOG | <input type="checkbox"/> |
| 3. DUCKS/OTHER BIRDS | <input type="checkbox"/> | 6. COWS GRAZING | <input type="checkbox"/> |

WRITE DOWN ONE MORE THING YOU FOUND THAT'S NOT LISTED ON THE MAP

CARSON RIVER PARK MAP

USE THIS MAP TO HELP YOU NAVIGATE YOUR WAY AROUND CARSON RIVER PARK. MAKE SURE TO MARK DOWN ALL OF THE THINGS YOU FOUND!



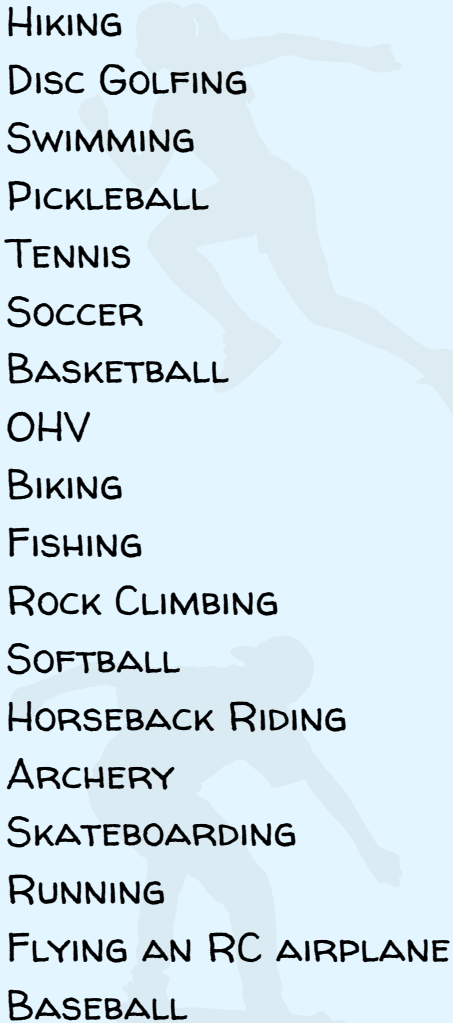
REMEMBER TO ORIENT YOUR BOOK SO THAT NORTH ON THE MAP POINTS TOWARDS NORTH IN REAL LIFE. IF YOU DON'T HAVE A COMPASS, USE THE DIRECTION TOWARDS RENO AS NORTH.



OUTDOOR ACTIVITIES

EVERY PARK AND OPEN SPACE HAS SOMETHING SPECIAL YOU CAN DO ON YOUR VISIT. LOOK AT THE LIST OF ACTIVITIES BELOW AND TRY TO PARTICIPATE IN AT LEAST THREE OF THEM. FOR EACH ONE YOU COMPLETE, WRITE DOWN WHERE YOU COMPLETED THE ACTIVITY. REMEMBER YOUR OUTDOOR SAFETY SKILLS AND LEAVE NO TRACE PRINCIPLES.

ACTIVITY



HIKING
DISC GOLFING
SWIMMING
PICKLEBALL
TENNIS
SOCCER
BASKETBALL
OHV
BIKING
FISHING
ROCK CLIMBING
SOFTBALL
HORSEBACK RIDING
ARCHERY
SKATEBOARDING
RUNNING
FLYING AN RC AIRPLANE
BASEBALL

LOCATION



PRISON HILL BINGO

PRISON HILL IS ONE OF CARSON CITY'S LARGEST OPEN SPACE AREAS AT 2,500 ACRES AND THE SUMMIT IS 5,700 FEET HIGH! ALTHOUGH THERE ARE MANY THINGS TO DO ON PRISON HILL, FOR THIS ACTIVITY GO FOR A HIKE AND PLAY THIS SCAVENGER HUNT BINGO.

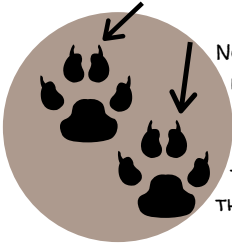
CAN YOU CROSS OFF 5 BOXES IN A ROW? TRY CHECKING THEM ALL OFF FOR AN EXTRA FUN ADVENTURE!

FIND SOME LICHEN	SPOT A BIRD	READ A KIOSK LOCATED AT THE TRAILHEAD	FIND A BERRY ON A PLANT	CLEAN UP LITTER
WRITE DOWN SOME OBSERVATIONS	FIND AN INTERESTING ROCK	LOCATE THE "S" WHAT DO YOU THINK IT MEANS?	SAY HELLO TO ANOTHER TRAIL USER	FIND AN ANIMAL HOLE
FIND AN ANIMAL TRACK	FIND A BLOOMING FLOWER	TAKE A PHOTO	LOCATE SOME RABBITBRUSH	SPOT A RABBIT
BIKE OR HIKE ON A TRAIL	PLAN YOUR ROUTE WITH THE TRAIL MAP	SPOT A DOG	READ A TRAIL SIGN	FIND A CRAWLING INSECT
LOCATE SOME BITTERBRUSH	PRACTICE LEAVE NO TRACE	IDENTIFY THE NEVADA STATE FLOWER	SPOT A HAWK	PLAN YOUR NEXT ADVENTURE!

WRITE DOWN ANY INTERESTING OBSERVATIONS:

TRAIL FRIENDS

PARKS AND OPEN SPACE ARE OFTEN PLACES WHERE WE FIND AN ABUNDANCE OF WILDLIFE. WHILE YOU ARE EXPLORING THOSE AREAS, LOOK AT THE GROUND AND YOU'LL NOTICE DIFFERENT KINDS OF FOOT PRINTS. BELOW ARE A FEW OF THE TRACKS YOU MAY FIND. CAN YOU MATCH THE ANIMAL WITH ITS TRACKS?



NOTICE THE CLAW MARKS ON THESE TRACKS? WHICH ANIMAL HAS CLAWS THAT ARE OUT ALL THE TIME?

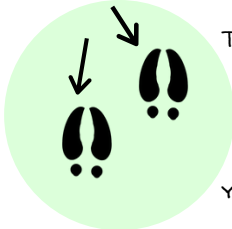
MULE DEER



WHICH ANIMAL IS ABLE TO RETRACT ITS CLAWS? THESE TRACKS DO NOT HAVE CLAW MARKS.



CANADIAN GOOSE

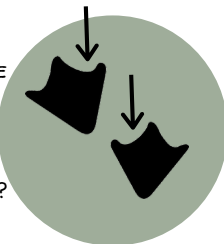


THESE PRINTS WERE MADE BY TWO HOOVES AND USUALLY RESEMBLE AN UPSIDE DOWN HEART. WHICH ANIMAL DO YOU THINK HAS HOOVES?

MOUNTAIN LION



LOOKS LIKE THESE PRINTS HAVE WEBBED FEET? WHICH ANIMAL DO YOU THINK HAS WEBBED FEET?



COYOTE



THIS ANIMAL MOVES BY HOPPING. ITS SMALLER FRONT FEET LAND BEHIND ITS LARGER BACK FEET. WHICH ANIMAL HOPS?

JACK RABBIT





SCORPION SEARCH



GRAB AN ADULT, A HANDHELD BLACK LIGHT, AND TRAVEL TO THE WILD HORSE TRAIL FOR THIS EXCITING SCAVENGER HUNT! NORTHERN NEVADA IS HOME TO SEVERAL SPECIES OF SCORPIONS THAT ALL GLOW UNDER A BLACK LIGHT. USE IT TO FIND AS MANY SCORPIONS AS YOU CAN. USE THE SCORE CARD TO KEEP TRACK OF YOUR FAVORITE ONES!

ADULTS: USE GLOVES IF MEASURING THE LENGTH OF THE SCORPIONS AND NEVER ATTEMPT TO HANDLE ONE. DO THIS ACTIVITY ON YOUR OWN OR JOIN A PARK RANGER EVERY JULY.

NORTHERN SCORPIONS

THIS SPECIES IS THE MOST COMMON TYPE OF SCORPION FOUND HERE IN NEVADA. DUE TO ITS ABILITY TO SURVIVE IN HARSH CONDITIONS, THIS SCORPION CAN BE FOUND IN ALL WESTERN STATES AND IS THE ONLY TYPE OF SCORPION FOUND IN CANADA! THEY ARE NOT LETHAL TO HUMANS.

VENOM

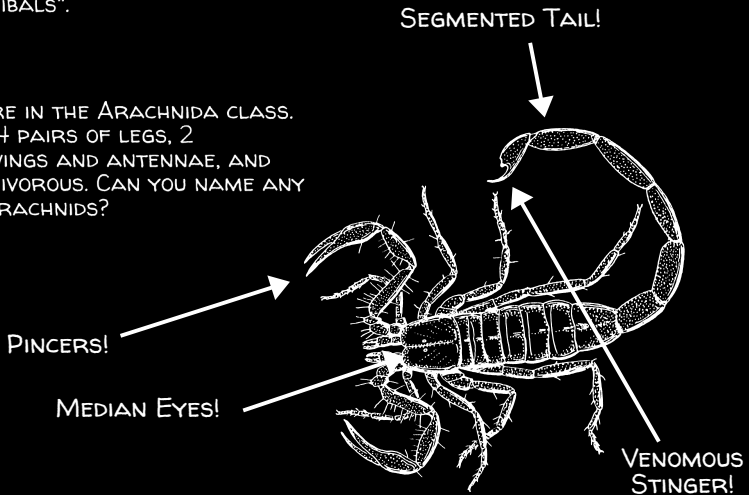
ONLY 25 SPECIES OF SCORPIONS POSSESS VENOMS CAPABLE OF KILLING PEOPLE. IN THE UNITED STATES, THERE HAVE BEEN VERY FEW DEATHS IN THE PAST SEVERAL DECADES. SPECIES IN THE CENTRUROIDES GENUS ARE PRIMARILY RESPONSIBLE FOR KILLING HUMANS.

HABITAT

SCORPIONS ARE LARGELY NOCTURNAL AND HIDE DURING THE DAY. THEY LIVE IN BURROWS, UNDER ROCKS, AND IN CRACKS. THEY ARE MOSTLY NONSOCIAL AND CAN BE SO AGGRESSIVE TOWARDS OTHER SCORPIONS, THEY ARE CONSIDERED "INVETERATE CANNIBALS".

ARACHNIDS

ALL SCORPIONS ARE IN THE ARACHNIDA CLASS. ARACHNIDS HAVE 4 PAIRS OF LEGS, 2 PEDIPALPS, LACK WINGS AND ANTENNAE, AND ARE MOSTLY CARNIVOROUS. CAN YOU NAME ANY OTHER TYPES OF ARACHNIDS?



SCORE YOUR SCORPIONS!

BIGGEST SCORPION: _____ IN

SMALLEST SCORPION: _____ IN

NOTES: _____

TALLEY 'EM UP

1

2

3

4

5

6

7

8

LIVIN' IN COYOTE COUNTRY

NORTHERN NEVADA IS HOME TO AN ABUNDANT POPULATION OF COYOTES. MOST HIKERS DON'T KNOW HOW TO REACT TO SEEING A COYOTE ON THE TRAIL. DON'T WORRY, THEY WON'T BOTHER YOU. USE THE HELPFUL INFORMATION BELOW TO UNDERSTAND OUR BACKCOUNTRY K-9s. JOIN A PARK RANGER ON THE NEXT COYOTE WALK TO GET EVEN MORE INFORMATION!

Identification

COYOTES CAN BE IDENTIFIED BY THEIR BROWN/GREY FUR AND CREAM COLORED BELLIES. THEY ALSO HAVE STIFF POINTY EARS, LONG SLENDER LEGS AND A SLENDER MUZZLE. THE MOST OBVIOUS CHARACTERISTIC IS THEIR BUSHY TAIL WITH A BLACK TIP.

Life Info

COYOTES ARE FOUND IN MOST OF NORTH AMERICA EXCEPT IN AREAS WHERE WOLVES AND GRIZZLY BEARS LIVE. THEY LIVE BETWEEN SIX-EIGHT YEARS OLD AND OFTEN LIVE IN PACKS WITH UP TO EIGHT COYOTES. THEY CAN THRIVE IN MOST WEATHER CONDITIONS AND ARE USUALLY ACTIVE AT DAWN AND DUSK.

Diet

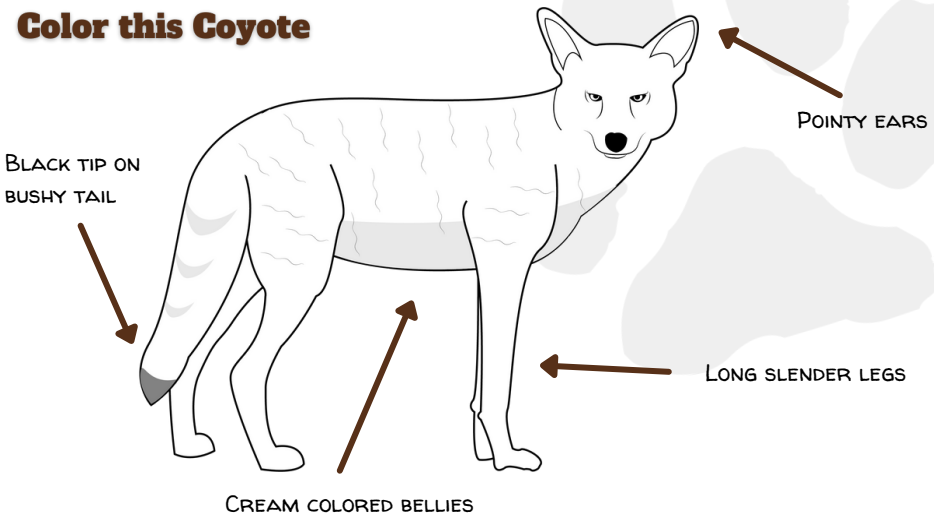
COYOTES ARE CONSIDERED OPPORTUNISTIC, MEANING THEY WILL EAT WHATEVER THEY CAN GET THEIR PAWS ON. A CHICAGO STUDY FROM 2006 FOUND A GENERAL COYOTE DIET THAT MOSTLY CONSIST OF RODENTS, FRUITS, RABBITS, DOMESTIC CATS, TRASH AND HUMAN FOOD.

Hazing Coyotes

WHEN USING TRAILS AND OPEN SPACE, WE ARE VISITING THE COYOTES' TERRITORY. IF YOU ARE EVER APPROACHED BY A COYOTE, TRY "HAZING" THEM TO AVOID CONFLICT.

1. DON'T RUN! THAT MIGHT ENCOURAGE CHASING
2. BE BIG AND VISIBLE
3. MAKE A BUNCH OF NOISE AND BE LOUD!
4. THROW OBJECTS IN THEIR DIRECTION, BUT NEVER TRY TO HIT THEM.
5. KEEP AS MUCH EYE CONTACT AS YOU CAN
6. DON'T STOP HAZING UNTIL THEY ARE GONE, CYCLE THROUGH THESE STEPS.

Color this Coyote



SAGEBRUSH OBSERVATION

DO YOU KNOW WHAT NEVADA'S STATE FLOWER IS? THAT'S RIGHT, SAGEBRUSH! HEAD OUTSIDE AND LOCATE THE BEST SAGEBRUSH YOU CAN FIND TO COMPLETE THE ACTIVITY BELOW.

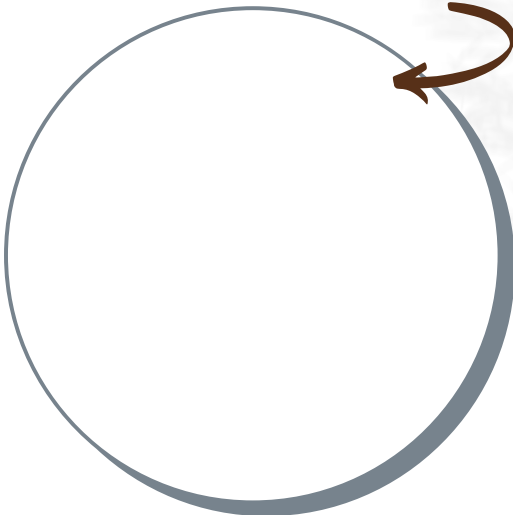


THE SPECIFIC KIND OF SAGEBRUSH YOU WILL FIND HERE IN THE GREAT BASIN IS CALLED "BIG SAGEBRUSH" OR *ARTEMISIA TRIDENTATA*.

THE EASIEST WAY TO FIND A SAGEBRUSH IS BY LOCATING THE BUSH WITH THE SILVERY GREEN LEAVES. LOOK CLOSELY, AND YOU SHOULD FIND THREE LITTLE LOBES AT THE ENDS.

THE FLOWERS OF THE SAGEBRUSH ARE SMALL AND YELLOW AND GROW UP OUT OF THE STEM IN BUNDLES, CALLED TUBULAR CLUSTERS.

DRAW WHAT YOUR SAGEBRUSH LOOKS LIKE!



DESCRIBE WHAT YOUR SAGEBRUSH SMELLS LIKE


DESCRIBE WHAT YOUR SAGEBRUSH FEELS LIKE

CARSON RIVER WATER CYCLE

READ ABOUT THE WATER CYCLE AND THE PATH OF THE CARSON RIVER. ANSWER THE QUESTIONS AT THE BOTTOM, THEN PLACE THE UNDERLINED TERMS IN THE CORRECT LOCATIONS ON THE NEXT PAGE.

THE SUN SHINES DOWN ON THE PACIFIC OCEAN, CAUSING DROPLETS OF WATER TO HEAT UP AND RISE INTO THE AIR, CALLED EVAPORATION. ONCE THE WATER DROPLETS COOL DOWN, THEY COME TOGETHER AND FORM CLOUDS CALLED CONDENSATION. THE WIND PUSHES THE CLOUDS EAST TOWARDS THE SIERRA NEVADA. THE CLOUDS BECOME SO CONDENSED THAT WATER DROPLETS BEGIN TO FALL AS RAIN, SNOW, AND HAIL, CALLED PRECIPITATION. THIS IS HOW THE CARSON RIVER STARTS TO FORM.

WANT TO LEARN MORE?
CHECK OUT THE CARSON WATER SUBCONSERVANCY WEBSITE FOR INTERACTIVE WATERSHED MAPS, INFORMATION ON HOW TO GET INVOLVED, AND TO STAY INFORMED!
WWW.CWSD.ORG



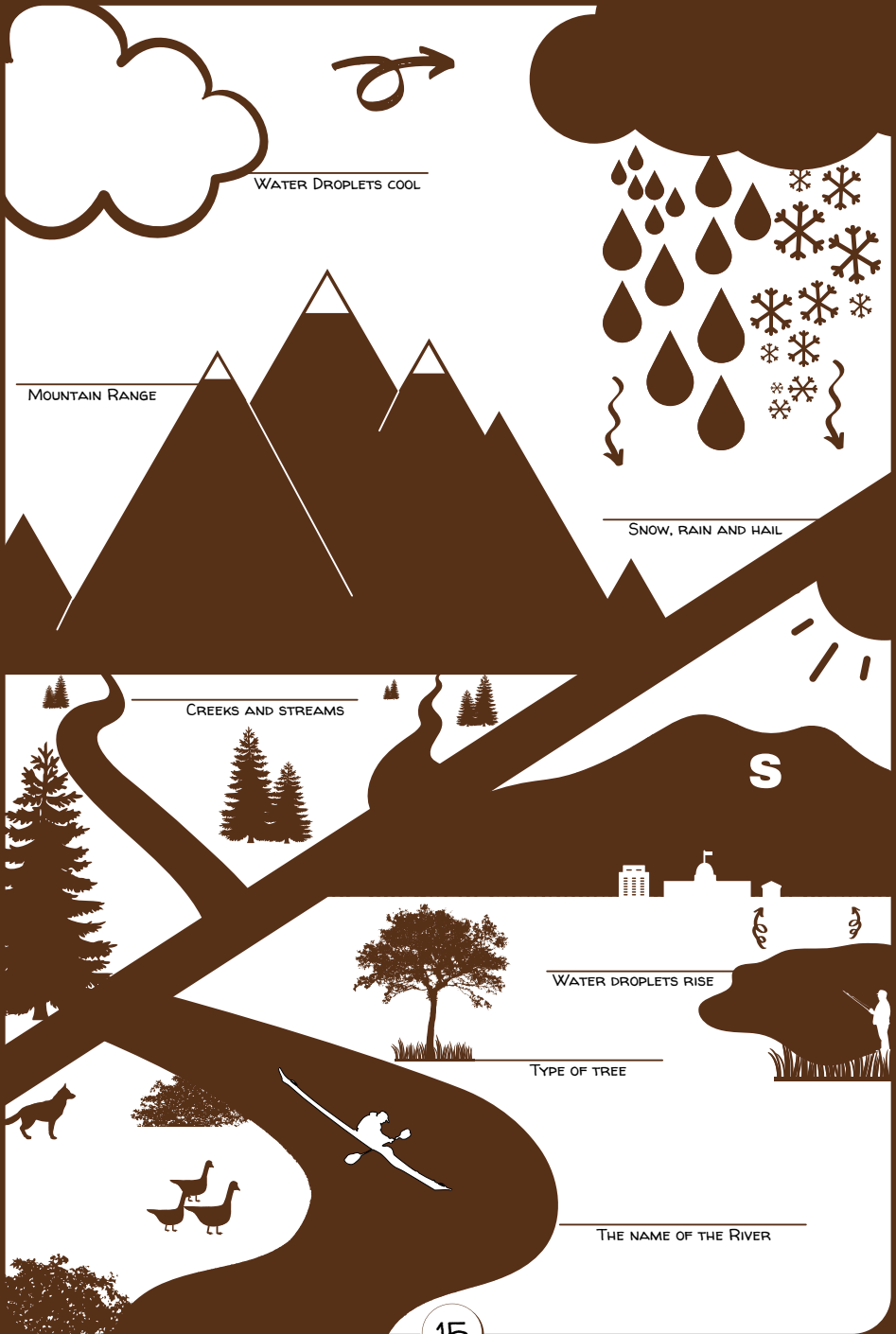
AS THE ACCUMULATED SNOW ON THE SIERRA NEVADA BEGINS TO MELT, IT FORMS CREEKS, STREAMS, AND SEEPS INTO THE GROUND. THE CREEKS AND STREAMS, CALLED RUNOFF, COME TOGETHER AND FORM LARGER RIVERS. THE CARSON RIVER ORIGINATES AS A CREEK IN TWO DIFFERENT LOCATIONS, CALLED THE EAST FORK AND THE WEST FORK. THE WEST FORK STARTS NEAR THE LOST LAKES AND THE EAST FORK STARTS NEAR MARKLEEVILLE. BOTH FORKS OF THE RIVER COME TOGETHER IN MINDEN JUST BEFORE THE TOWN OF GENOA. ONCE THE RIVER MEANDERS THROUGH THE CAPITOL OF NEVADA, CARSON CITY, IT MAKES ITS WAY THROUGH CANYONS, DAMS AND DOWN TO LAHONTAN RESERVOIR. UNLIKE MOST RIVERS, THE CARSON RIVER NEVER REACHES THE OCEAN. INSTEAD, THE RIVER EMPTIES INTO THE CARSON SINK LOCATED JUST PAST FALLON, NEVADA. ONCE THERE, THE WATER EVAPORATES AND RESTARTS THE WATER CYCLE.

ALONG ITS JOURNEY, THE CARSON RIVER PLAYS AN IMPORTANT ROLE IN THE WATERSHED IT RUNS THROUGH. NOT ONLY DO PLANTS, LIKE COTTONWOOD TREES, TAKE UP SOME OF THE WATER, BUT THE RIVER OFTEN HOSTS AN ABUNDANCE OF WILDLIFE THAT USE IT AS A HOME.

LIST SOME WAYS YOU USE THE CARSON RIVER

WRITE DOWN SOME ANIMALS THAT YOU THINK CALL THE CARSON RIVER HOME

CARSON RIVER WATER CYCLE



KINGS CANYON CROSSWORD

ORIGINALLY SERVING AS A RANCH, KINGS CANYON IS NOW OUR GATEWAY TO THE CARSON RANGE. IT IS HOME TO MAJESTIC PINES THAT TOWER OVER A PLETHORA OF WILDLIFE. TAKE A STROLL TO THE WATERFALL LOCATED JUST 0.3 MILES FROM THE TRAILHEAD. WHEN YOU ARE DONE EXPLORING, TRY TO COMPLETE THIS CROSS WORD PUZZLE. IF YOU NEED HELP WITH AN ANSWER, BE SURE TO ASK A PARK RANGER AT YOUR SWEARING IN!

ACROSS

4. THIS BUSH IS NAMED AFTER THE SPANISH WORD FOR SMALL APPLES DUE TO THE BERRIES IT PRODUCES. IT CAN BE IDENTIFIED BY ITS BEAUTIFUL RED BARK.

5

5. YOU CAN IDENTIFY THESE K-9s BY THEIR POINTY EARS, BUSHY TAILS AND LONG SLENDER LEGS. THEY CAN WEIGH UP TO 35 POUNDS.

8. THE DIRT ROAD AT KINGS CANYON WAS ORIGINALLY A PART OF THIS HIGHWAY UP TO LAKE TAHOE.

10

10. THIS PINE TREE'S CONES ARE OFTEN PRICKLY. THE BARK IS RED/BROWN WITH LARGE PUZZLE-PIECE SEGMENTS.

DOWN

1. MOST OF THE SIERRA NEVADA ARE FORMED FROM THIS TYPE OF ROCK.

2. HIKE 0.3 MILES FROM THE TRAILHEAD TO FIND THIS CARSON CITY NATURAL WONDER.

3. THESE CREATURES CAN WEIGH UP TO 300 POUNDS ON A DIET OF BERRIES, NUTS, HONEY, FISH AND SMALL MAMMALS.

6. THIS IS THE SECOND LARGEST WILD CAT IN THE UNITED STATES AND CAN BE FOUND IN ALL PARTS OF THE COUNTRY.

7. THE KINGS CANYON AREA WAS ONCE THE SITE OF THIS RANCH. THE OWNERS DONATED THE PROPERTY TO THE PUBLIC SO IT ALWAYS STAYS BEAUTIFUL.

9. THIS PINE TREE'S CONES ARE SOFT AND GENTLE. THE TREE OFTEN SMELLS LIKE VANILLA OR LEMON.

INTERVIEW A RANGER

PARK RANGERS WORK AROUND THE WORLD AND DO MANY DIFFERENT JOBS. THEY PARTICIPATE IN MAINTENANCE TASKS, COMMUNITY EDUCATION, AND LAW ENFORCEMENT. ALL PARK RANGERS HAVE SIMILAR GOALS HOWEVER; PROTECT THE NATURAL RESOURCES FROM PEOPLE AND PROTECT PEOPLE FROM THE NATURAL RESOURCES. FOR THIS ACTIVITY, INTERVIEW A PARK RANGER USING SOME, OR ALL, OF THE QUESTIONS BELOW. YOU CAN FIND A CARSON CITY PARK RANGER ON ONE OF THE MANY PARK RANGER LED ACTIVITIES THROUGHOUT THE YEAR, OR BY CONTACTING THE CARSON CITY PARKS, RECREATION & OPEN SPACE DEPARTMENT TO SCHEDULE A VISIT AND FIND OUT MORE.

DATE OF INTERVIEW: ____/____/____

LOCATION OF INTERVIEW: _____

NAME OF PARK RANGER: _____

HOW MANY YEARS HAS THE PARK RANGER WORKED IN THE FEILD? _____

HOW DID THE PARK RANGER PREPARE FOR THE JOB? _____

WHAT DOES THE PARK RANGER LIKE ABOUT HIS/HER JOB? _____

WHAT IS ONE THING THE PARK RANGER DOES EVERYDAY ON THE JOB? _____

WHAT IS THE PARK RANGER'S FAVORITE WILD ANIMAL IN THE PARK? _____

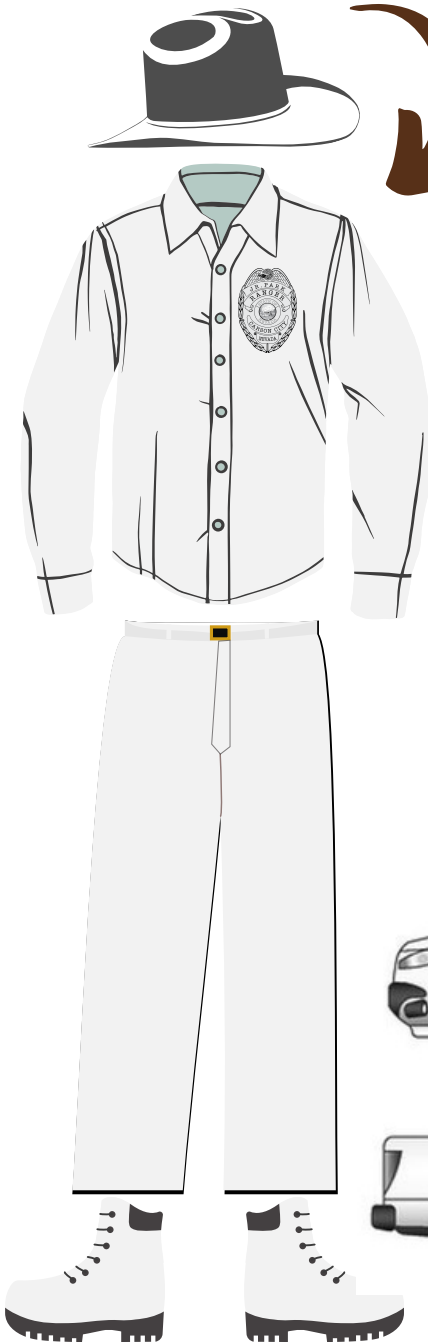
WHAT IS THE PARK RANGER'S FAVORITE PARK TO VISIT? _____

WHAT IS THE PARK RANGER'S FAVORITE OUTDOOR ACTIVITY? _____

WHAT IS ONE THING THE PARK RANGER WOULD LIKE YOU TO LEARN FROM THIS INTERVIEW? _____

COLOR A RANGER

DESIGN YOUR VERY OWN PARK RANGER UNIFORM!



YOU ARE GOING TO NEED A BADGE TOO!



DON'T FORGET YOUR PARK RANGER TRUCK!



NATURE JOURNAL

ON YOUR NEXT OUTDOOR ADVENTURE, WRITE DOWN SEVEN THINGS YOU OBSERVE. OBSERVATIONS CAN BE THINGS YOU SEE, HEAR, SMELL, OR FEEL. THEN, LIST ONE THING YOU LEARNED FROM YOUR OBSERVATIONS.

1.

2.

3.

4.

5.

6.

7.

SOMETHING YOU LEARNED:

STAY ON TRACK

SUCCESSFULLY PLANNED AN OUTDOOR ADVENTURE? Yes/No

NAVIGATED AROUND CARSON RIVER PARK? Yes/No

PARTICIPATED IN AT LEAST 3 OUTDOOR ACTIVITIES? Yes/No

JOINED A PARK RANGER ON AN ACTIVITY? Yes/No

PARK RANGER SIGNATURE

DATE

TAKE THE OATH

I _____

PRINT YOUR NAME

PROMISE TO:

APPRECIATE, RESPECT, AND BE A STEWARD OF ALL
CARSON CITY PARKS, TRAILS AND OPEN SPACE.

HELP PRESERVE AND PROTECT MY COMMUNITY.

CONTINUE LEARNING ABOUT THE PARKS, OPEN SPACE,
PLANTS, ANIMALS AND HISTORY OF THESE SPECIAL
PLACES.

SHARE WHAT I LEARN WITH MY FRIENDS AND FAMILY.

JUNIOR RANGER SIGNATURE

DATE

PRINTING MADE POSSIBLE WITH FUNDING FROM:



GET INVOLVED AND LEARN ABOUT THE
IMPORTANCE OF NORTHERN NEVADA'S
WATERSHEDS BY BECOMING A RIVER WRANGLER!
WWW.RIVERWRANGLERS.ORG

JUNIOR PARK RANGER ONLINE RESOURCES:

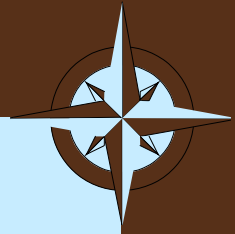


ADULTS: FOR EDUCATIONAL MATERIAL AND HELPFUL
RESOURCES, VISIT WWW.CARSON.ORG/PARKSANDREC
AND FIND THE JUNIOR PARK RANGER PAGE.

- ADVENTURE GUIDE ANSWER KEY
- CARSON CITY TREE IDENTIFICATION
- PARK RANGER-LED PROGRAMS
- PARK RANGER CONTACT INFORMATION
- PARK AND OPEN SPACE LOCATIONS



FOR INTERACTIVE AND DETAILED CARSON
RIVER WATERSHED INFORMATION, VISIT
THE CARSON WATER SUBCONSERVANCY
DISTRICT WEBSITE AT WWW.CWSD.ORG



CARSON CITY PARKS, RECREATION & OPEN SPACE

WWW.CARSON.ORG/PARKSANDREC (775) 887-2262
3303 BUTTI WAY, STE 9, CARSON CITY, NV 89701

