

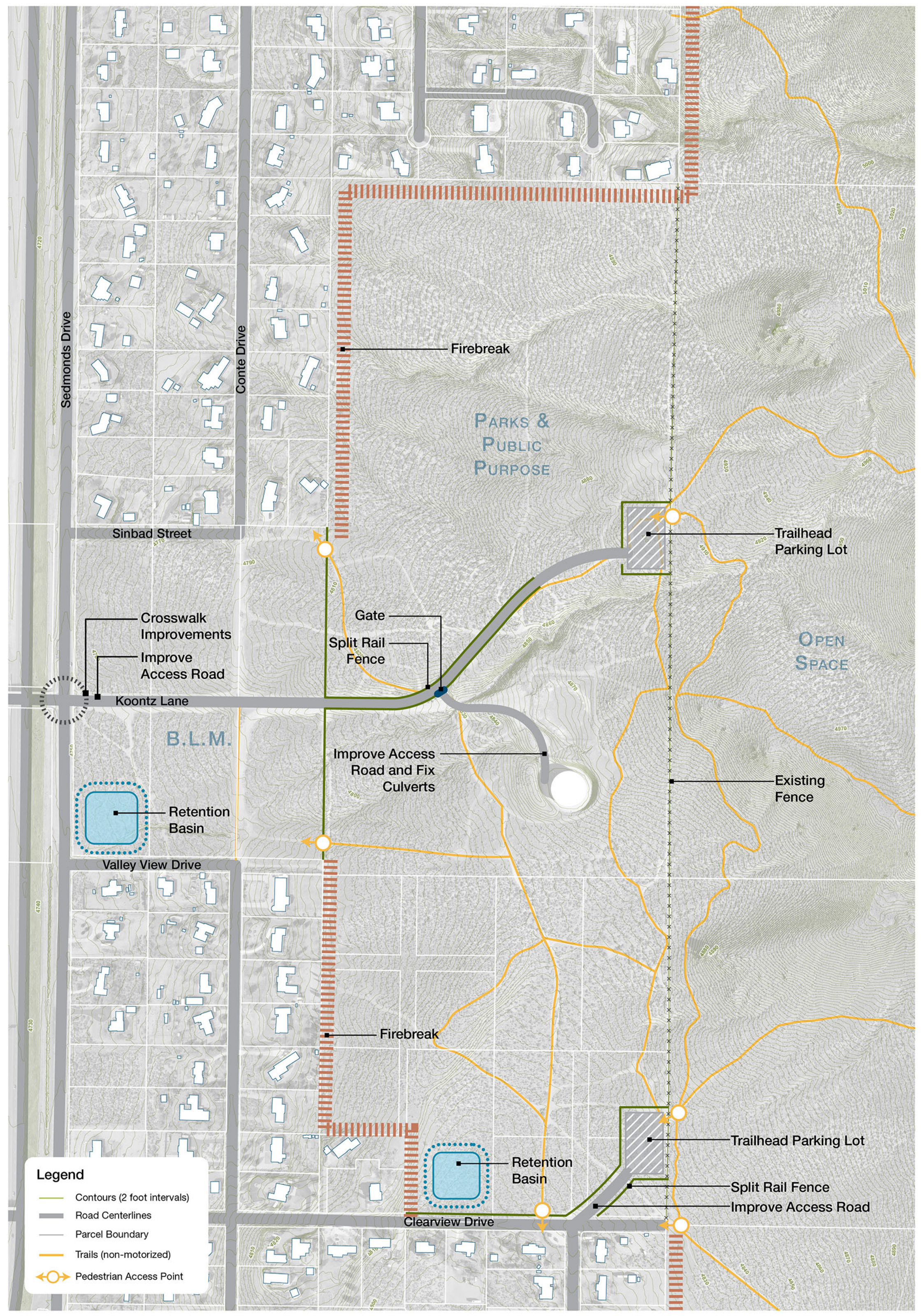
Prison Hill Recreation Area Open House - January 9, 2020

Written Comments

Note: Participants viewed two potential options for location of the Koontz Lane trailhead. Alternative 1 left the trailhead in its current location, and Alternative 2 would have closed the current trailhead and relocated it to a lower location on Koontz Lane. They also viewed an overall map of Prison Hill and adjacent properties. All visuals are shown below.

- Complements on improvements to 5th Street TH -- Improved parking, erosion control, toilet, picnic table, loop trails, etc. Looking forward to upgrade at Koontz trailhead. Prefer Alternative 1.
- Would like ordinances and signage that prohibits use of area outside of dawn-to-dusk. Would like Park Ranger phone numbers posted. More ordinances: No camping or overnight parking, animals on leash, no nighttime use ever, no destroying sage or harming animals.
- Would like restroom at Koontz TH.
- Prefer alternative 1. Would like toilet at Koontz TH. Do not extend OHV footprint.
- Prefer alternative 1. Remove barrier on Conte/Sinbad.
- Prefer alternative 1.
- Prefer alternative 1.
- Prefer alternative 1. Would like City to acquire the BLM land by Koontz/Edmonds.
- Prefer alternative 1. Would like retention basins. Keep area natural, no amenities other than dog poo bags. No motorized vehicles, except on south end of Prison Hill. Invasive weeds a problem, as well as dog poop.
- Good plans.
- Love idea of improving trails and parking areas. Popular with older folks. No picnic/overnight areas. Concerned about trash, fires, campers, cost to taxpayers, flash flood/runoff near Koontz/Sinbad/Conte. Looking forward to trail improvements.
- Prefer alternative 1 -- wonderful viewpoint, gets you closer to trails. Want restricted vehicle access -- people are driving all over the place and ripping up the desert and causing erosion.
- Prefer alternative 2. Install barriers to prevent off-road vehicle use in the Koontz area. Improve access road.
- Plan for flood issues -- flooding comes from Koontz. Less development is better. Prefer alternative 1. No ATV's or dirt bikes in Koontz area.
- Prefer alternative 2, but fine with both. Looking forward to improved access road.
- Consider emergency response station at each trailhead (like on college campuses). Prefer alternative 1.
- Dog and horse droppings are littering paths.
- Prefer alternative 2. Limit vehicle access to parking areas. Existing vehicle access has negative consequences -- litter, illegal activity, overnight use, etc.
- Prefer alternative 2 because more cost effective.

- Prefer alternative 1 – gets people closer to trails. OK with OHV's using Koontz area because they were there before homes. Fire break should be masticated. Take out the ridiculous trenches across Koontz – small cars cannot cross, and drivers are going around them.
- Prefer alternative 1 – closer access to Prison Hill and trails. Want fencing to eliminate vehicle traffic except for road to parking area. Rehab old roads.
- Prefer alternative 1 – closer to opportunity.
- Want parking in both locations (Alt. 1 and Alt. 2) – reduce overcrowding. Younger folks up high, older folks down below.
- Definitely prefer alternative 1. Restroom would be nice.
- Definitely like alternative 1. Restroom and picnic table would be great; water not necessary. Would like OHV access restricted as much as possible. Fencing to restrict access. Want trash cans.
- Make Koontz area non-motorized. Expand parking areas. Close current roads, except for access to parking areas. More signage for parking areas.
- Want pit toilet at Koontz TH.
- Want retention basins on Koontz parcel.
- Refer alternative 1. Reduce roads. Pit toilets.
- Would love to see driving access between Koontz TH and Clearview TH blocked. Too many horrors – drugs, crime, alcohol use, trash.
- Prefer alternative 1. Looks forward to amenities at trailheads.
- Prefer alternative 1. Use fencing to restrict motor vehicle use in Koontz area.
- Concerned about increased traffic on Edmonds Dr. Don't want OHV usage on Koontz parcel. OK with SF1A zoning on BLM parcels, if they are sold off, but no zoning change.
- Want to leave motorized access to Koontz parcel.
- Prefer alternative 1 – easier for seniors to get closer to trails. Please keep area natural (unmotorized) – quieter, less dust.
- Prefer alternative 2. Suggest mountain bike park for Koontz parcel.



Legend

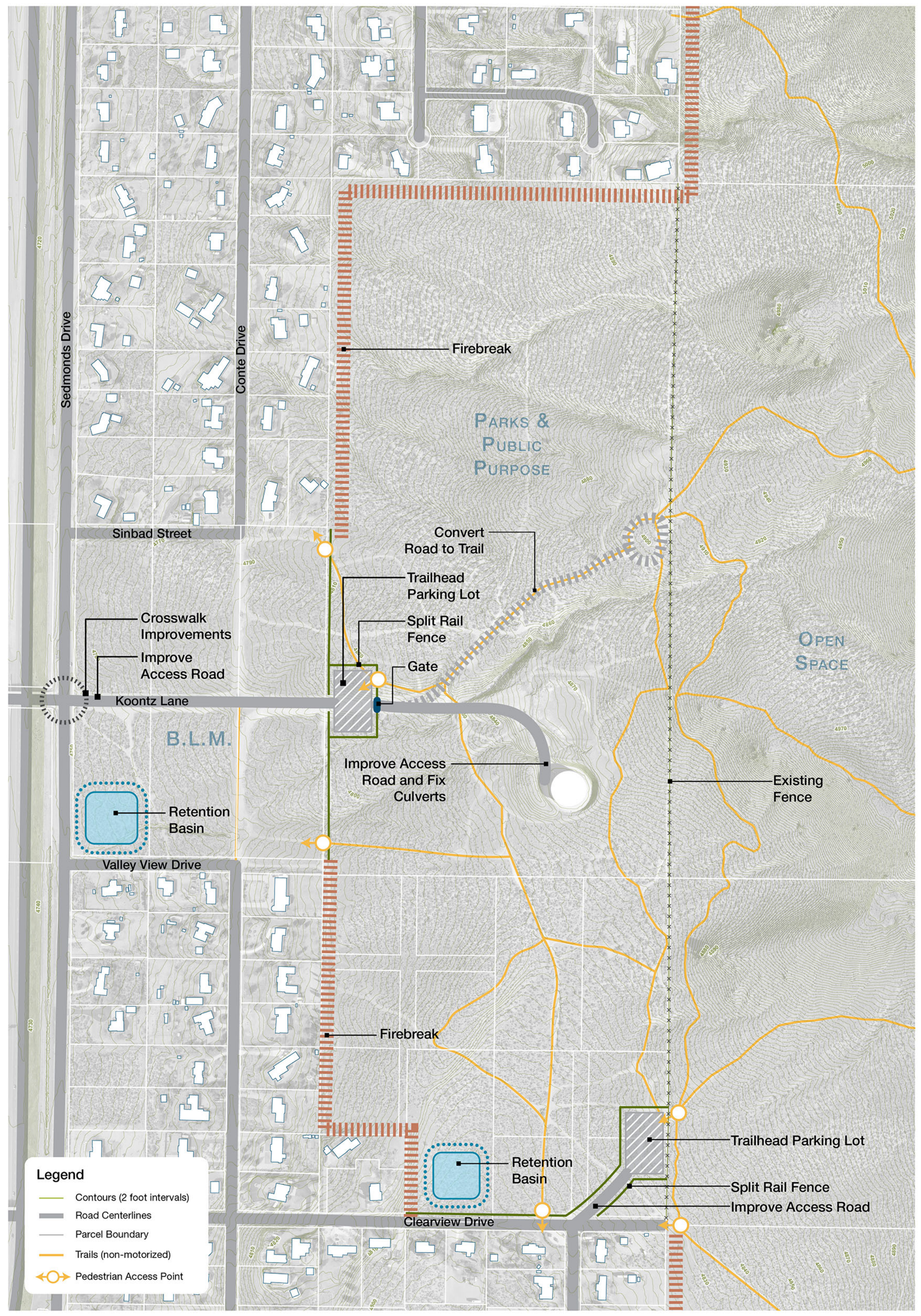
- Contours (2 foot intervals)
- Road Centerlines
- Parcel Boundary
- Trails (non-motorized)
- ⊕ Pedestrian Access Point

Prison Hill Recreation Area

Alternative 1

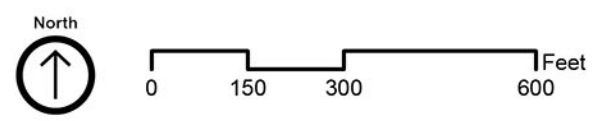
North ↑

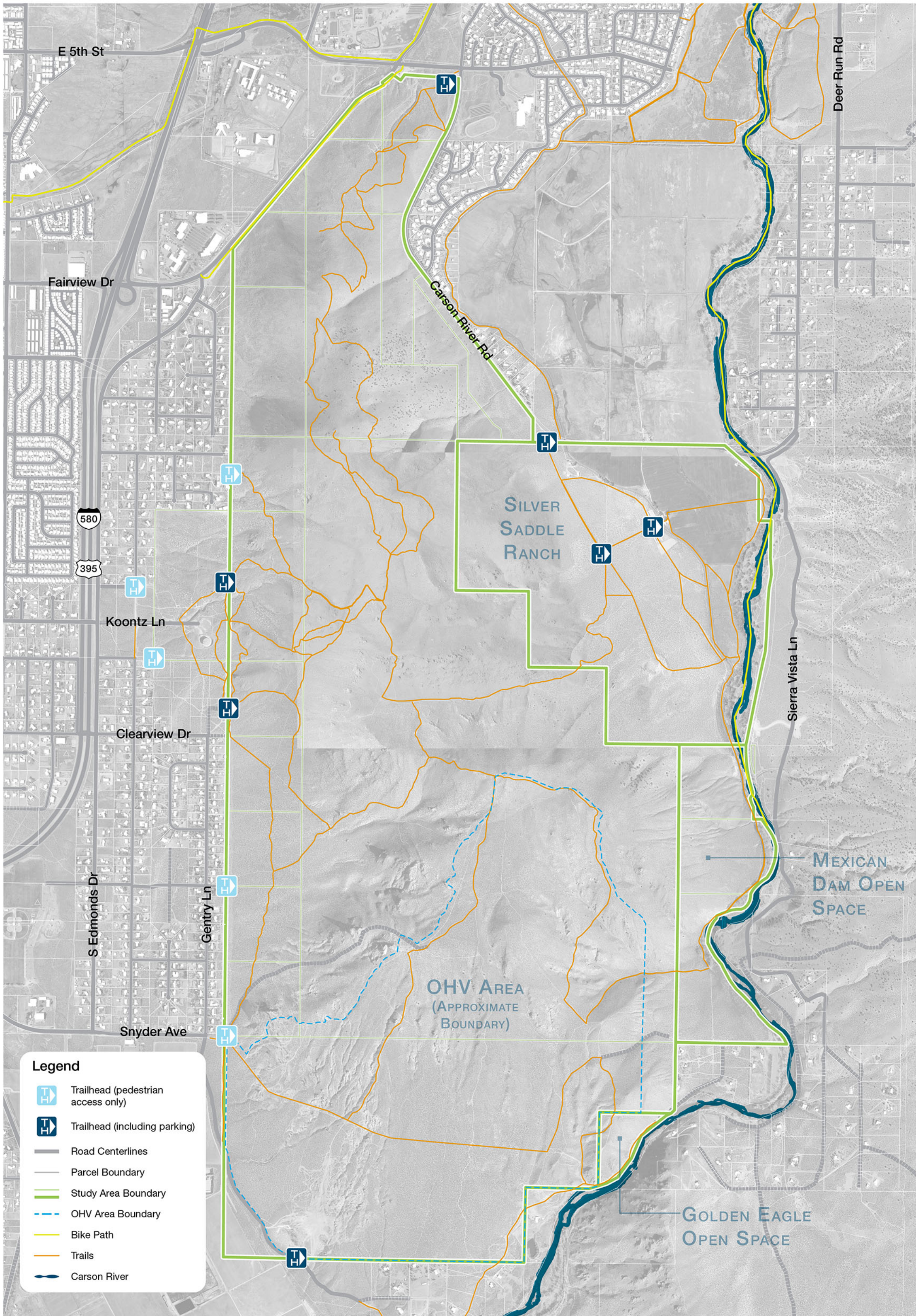
0 150 300 600 Feet



Prison Hill Recreation Area

Alternative 2





Prison Hill Recreation Area Including Adjacent Parcels

