



ASH CANYON • KINGS CANYON • C-HILL LAKEVIEW/TIMBERLINE

INCLUDES: Capital to Tahoe Trail, Ash to Kings Trail, Lincoln Bypass, Bob's Trail, segments of the Historic V&T Trail, and many more...

ASH CANYON AREA

TRAIL	DIFFICULTY	LENGTH (MI)	SURFACE	GRADE		TREAD WIDTH		ELEVATION GAIN/LOSS	TRAIL USE	NOTES
				TYPICAL	MAX	TYPICAL	MIN			
Ash-to-Kings Trail	■	7.1	Soil/Rock	7%	22%	24"	18"	2,500 ft	Hike, Bike, Horse, Dogs	
Bob's Trail	■	2.6	Soil	7%	22%	24"	18"	990 ft	Hike, Bike, Horse, Dogs	Includes legacy trails: Jackrabbit, Postal, Deer Run and Baldy Green.
Vicee Rim Trail	■	0.7	Soil	8%	19%	24"	18"	330 ft	Hike, Bike, Horse, Dogs	
Seven Steps	◆	0.3	Soil/Rock	9%	33%	18"	14"	160 ft	Hike, Bike, Horse, Dogs	Steep trail with obstacles.
Eagle View Trail	◆	0.6	Soil/Rock	9%	33%	18"	14"	300 ft	Hike, Bike, Horse, Dogs	Steep trail with steep side slopes.
Evidence	◆	1.0	Soil/Rock	7%	30%	24"	18"	550 ft	Hike, Bike, Horse, Dogs	Steep trail with obstacles.
Four Day	■	0.4	Soil	9%	27%	24"	18"	280 ft	Hike, Bike, Horse, Dogs	
Creek Trail	◆	0.4	Soil/Rock	10%	35%	18"	18"	270 ft	Hike, Bike, Horse, Dogs	Steep trail, obstacles, drop-offs poor site lines. Ends at private property.
Historic V&T Trail (Murphy Dr. TH - Ash Canyon Rd.)	○	1.0	Asphalt	1%	2%	132"	132"	NA	Hike, Bike, Dogs	Easy paved trail, accessible for everyone.

KINGS CANYON AREA

TRAIL	DIFFICULTY	LENGTH (MI)	SURFACE	GRADE		TREAD WIDTH		ELEVATION GAIN/LOSS	TRAIL USE	NOTES
				TYPICAL	MAX	TYPICAL	MIN			
Ash-to-Kings Trail	■	7.1	Soil/Rock	7%	22%	24"	18"	2,500 ft	Hike, Bike, Horse, Dogs	
Capital-to-Tahoe Trail	■	9.8	Soil/Rock	6%	19%	24"	18"	3,500 ft	Hike, Bike, Horse, Dogs	Long and remote trail; Connects with Tahoe Rim Trail.
Lincoln Bypass	■	4.1	Soil/Rock	7%	21%	24"	18"	1,500 ft	Hike, Bike, Horse, Dogs	
North Kings Loop	■	1.8	Soil/Rock	9%	25%	24"	18"	850 ft	Hike	Dogs, horses, and bicycles prohibited. Dangerous cliffs - Stay on trail!
Waterfall Trail	■	0.3	Soil/Rock	10%	20%	24"	18"	170 ft	Hike	Dogs, horses, and bicycles prohibited. Dangerous Cliffs - Stay on trail!

TIMBERLINE / LAKEVIEW AREA

TRAIL	DIFFICULTY	LENGTH (MI)	SURFACE	GRADE		TREAD WIDTH		ELEVATION GAIN/LOSS	TRAIL USE	NOTES
				TYPICAL	MAX	TYPICAL	MIN			
Foothill Trail	■	0.6	Soil/Rock	8%	20%	24"	18"	300 ft	Hike, Bike, Dogs	Horses prohibited. Trail crosses private property - please stay on trail.
Lakeview Road	■	5.1	Soil	9%	17%	132"	96"	2,500 ft	Hike, Bike, Horse, Dogs	Horse watering station at trailhead in summer. Access to Secret Trail.
Planetary Walk	■	0.2	Soft gravel	7%	15%	36"	36"	80 ft	Hike	
Secret Trail	■	1.2	Soil	8%	20%	24"	18"	750 ft	Hike, Bike, Horse, Dogs	Access at mile 2.2 on Hobart Road.
V&T Trail (Hobart Rd. TH - Foothill Tr.)	■	0.5	Soil	6%	10%	24"	18"	200 ft	Hike, Bike, Dogs	Horses prohibited.
V&T Trail (From V&T TH)	■	0.4	Soil	4%	6%	48"	36"	80 ft	Hike, Bike, Horse, Dogs	

C-HILL AREA

TRAIL	DIFFICULTY	LENGTH (MI)	SURFACE	GRADE		TREAD WIDTH		ELEVATION GAIN/LOSS	TRAIL USE	NOTES
				TYPICAL	MAX	TYPICAL	MIN			
C-Hill Fire Road	■	0.5	Soil	6%	24%	132"	96"	150 ft	Hike, Bike, Horse, Dogs	
C-Hill Trail	◆	0.9	Soil/Rock	18%	38%	18"	12"	1,000 ft	Hike, Dogs	Very steep!
FEMA Trail	●	0.4	Soil	6%	15%	132"	96"	150 ft	Hike, Bike, Horse, Dogs	
The 'C'	◆	0.1	Soil/Rock	18%	22%	18"	12"	100 ft	Hike, Dogs	Very steep!
'Z' Trail	◆	0.3	Soil/Rock	10%	30%	18"	12"	280 ft	Hike, Dogs	Steep trail.

DIFFICULTY RATING SYSTEM

○ Easiest ● Easy ■ More Difficult ◆ More Difficult - has some very difficult features ◆ Very Difficult

Trail information is approximate. Conditions may change. Check land manager websites for additional trail information.

SHARE THE TRAILS

Be Kind, Be Courteous, Control Your Speed "Go Slow and Say Hello"

Respect private property and respect our shared public property and trails. Stay on designated trails, don't create short-cuts, and hike or ride through a puddle to prevent trail widening.

KNOW BEFORE YOU GO

- Download this map to your phone by using the QR code on the front.
- Be wildlife aware. This is black bear, mountain lion, rattlesnake, and tick habitat.
- Dress appropriately. Weather changes fast in Nevada.
- Carry water, snacks, sunscreen and first aid.
- Stay within the limits of your ability. Many of these trails are remote and difficult.
- Tell someone where you are going.

Carson City Non-Emergency Dispatch, 775-887-2677
Emergency, call 911

MOTOR VEHICLES

Motor Vehicles are permitted on Ash Canyon Road (closed in winter) and Kings Canyon Road. All other trails shown on this map are NON-MOTORIZED. Check with local land managers for current eBike regulations.



TRAIL PARTNERS

Carson City Parks, Recreation & Open Space Department
carson.org
carson.org/trails
775-887-2262

Nevada Division of State Parks
parks.nv.gov
775-684-2770

Tahoe Rim Trail Association
tahoerimtrail.org
775-298-4485

Historic Virginia and Truckee Trail
vandtrail.org

USDA Forest Service
Humboldt-Toiyabe National Forest Carson Ranger District
fs.usda.gov/htnf
775-882-2766

Muscle Powered Citizens for a Walkable and Bikeable Carson City
musclepowered.org

Visit Carson City
visitcarsoncity.com

Nevada Division of State Lands
lands.nv.gov
775-684-2720

Western Nevada College
wnc.edu
775-445-3000



Carson City has over 8,000 acres of Parks and Open Space and an extensive network of trails that link our community to our abundant public lands.

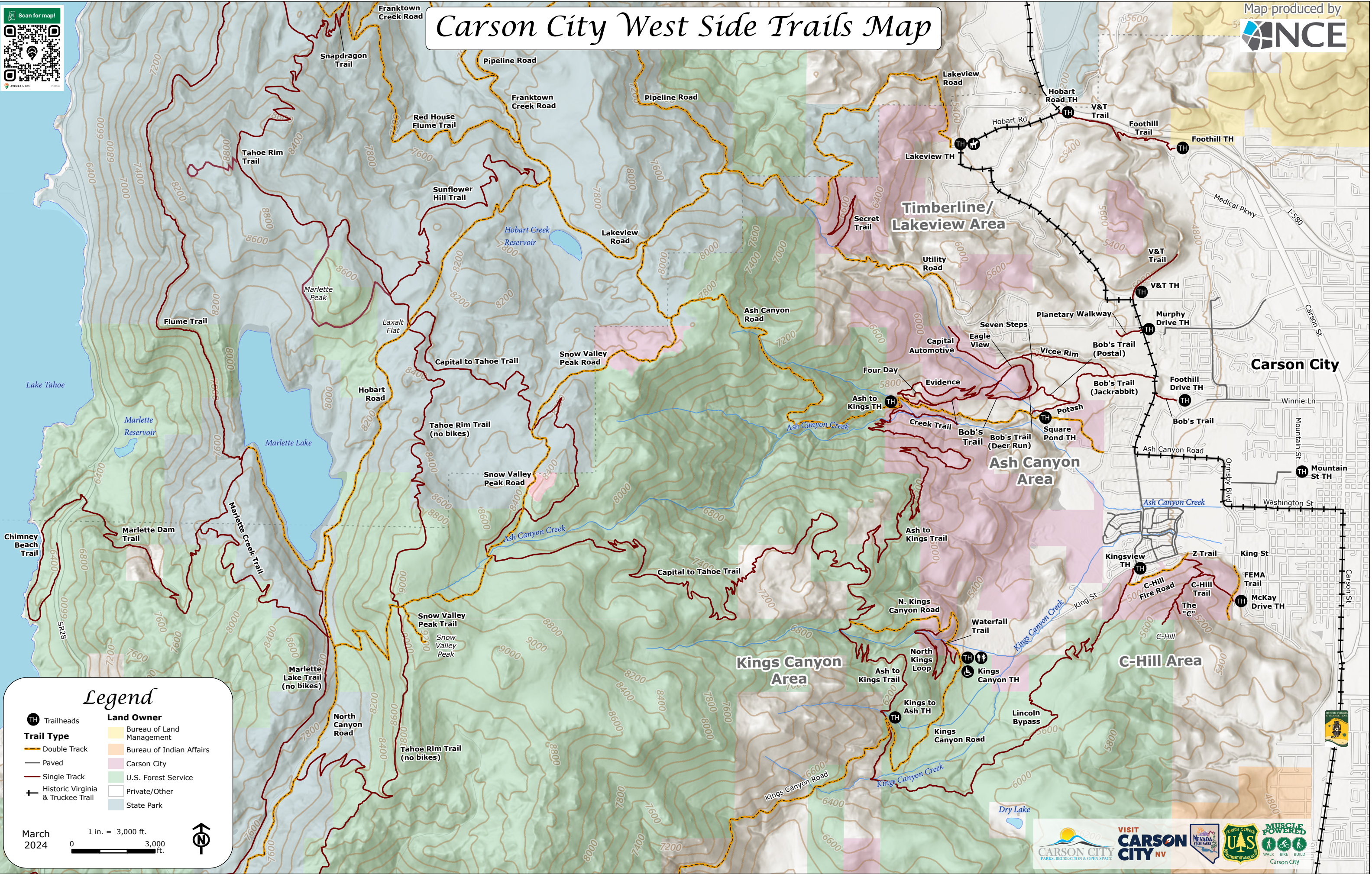
The west side of Carson City is nestled against the Carson Range of the Sierra Nevada where many miles of trails explore the rich history and natural beauty of our region. With completion of the Capital to Tahoe Trail in 2023, Carson City now has a singletrack connection to the Tahoe Rim Trail, the Pacific Crest Trail, and the world!



This map was created by NCE, the cover was designed by Visit Carson City, technical assistance was provided by Muscle Powered, and it was published by the Carson City Parks, Recreation & Open Space Department and Visit Carson City. July 2024.

Carson City West Side Trails Map

Map produced by
NCE



Legend

- | | |
|-----------------------------------|---------------------------|
| Trailheads | Land Owner |
| Double Track | Bureau of Land Management |
| Paved | Bureau of Indian Affairs |
| Single Track | Carson City |
| Historic Virginia & Truckee Trail | U.S. Forest Service |
| | Private/Other |
| | State Park |

March 2024

1 in. = 3,000 ft.

0 3,000 ft.

