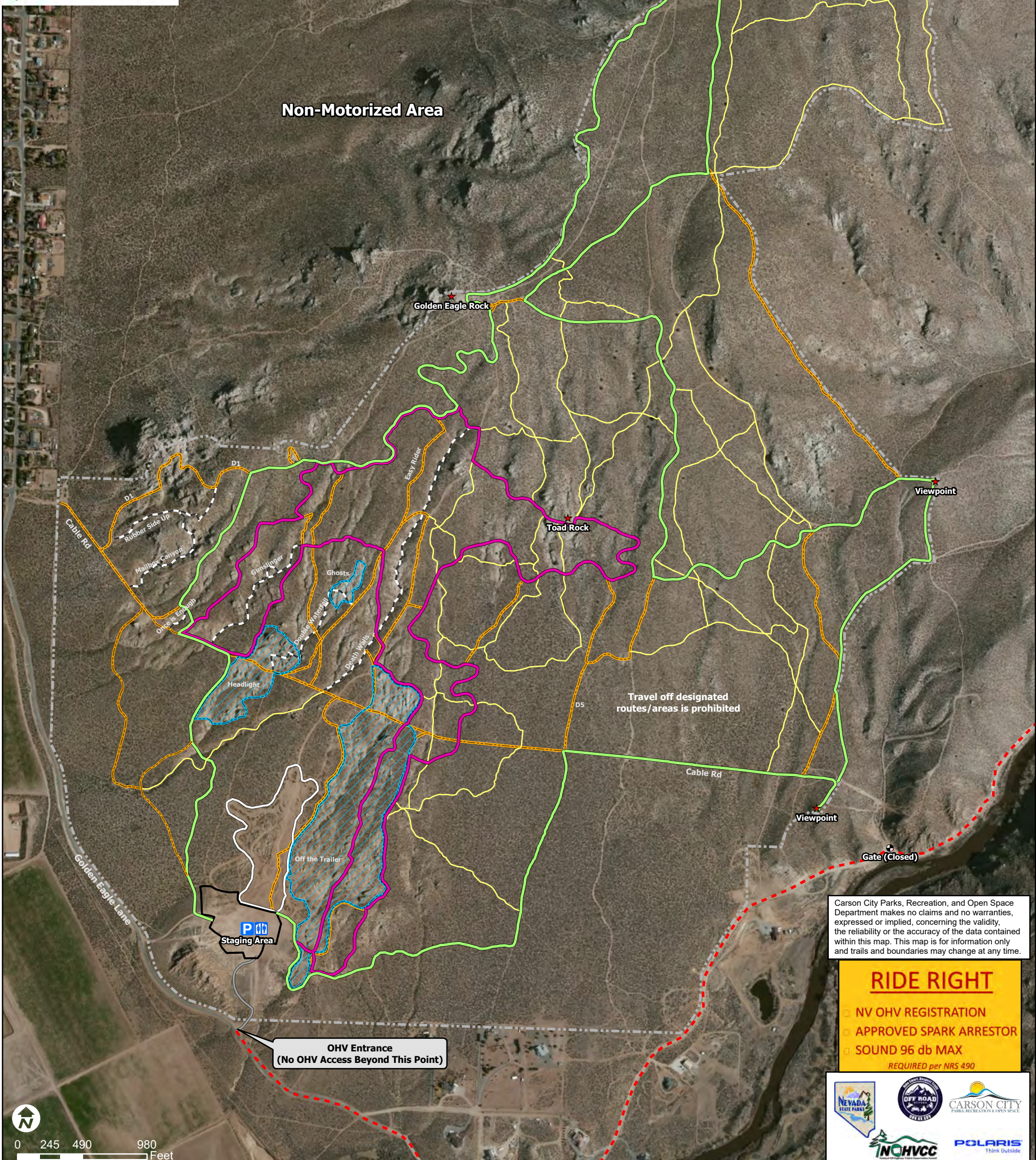




Prison Hill OHV Trail System



Non-Motorized Area

Travel off designated routes/areas is prohibited

Staging Area

OHV Entrance
(No OHV Access Beyond This Point)

Carson City Parks, Recreation, and Open Space Department makes no claims and no warranties, expressed or implied, concerning the validity, the reliability or the accuracy of the data contained within this map. This map is for information only and trails and boundaries may change at any time.

RIDE RIGHT

- NV OHV REGISTRATION
- APPROVED SPARK ARRESTOR
- SOUND 96 db MAX

REQUIRED per NRS 490



- Staging Area
- Restroom
- Point of Interest
- Singletrack Trails (<28")
- Double Track Trails (4x4)
- Wheeler Trails (Extreme)
- Summit Loop (4x4)
- Toad Rock Loop (4x4)
- Sand Training Area
- Open Skills Area
- OHV Area Boundary
- Private Road (No Access)

Need-To-Know

Ride Right: Nevada OHV Registration (required), spark arrestor, and 96db max sound.

Dawn to Dusk use only; NO camping and NO fires; Pack It In, Pack It Out.

Stay on designated routes/areas. Motorcycles allowed on Double Track and Wheeler routes.

Cross country travel prohibited.

Don't Crush the Brush: vegetation provides habitat for small animals and stabilizes soils.

Respect the trails, the land, and the rights of others, RIDE RESPONSIBLY!

Non-Emergency Dispatch (775) 887-2677; Emergency 911

Map Date: August 8, 2023