



Carson River Trails Phase III Prison Hill West

Three Components:

➤ Trailhead

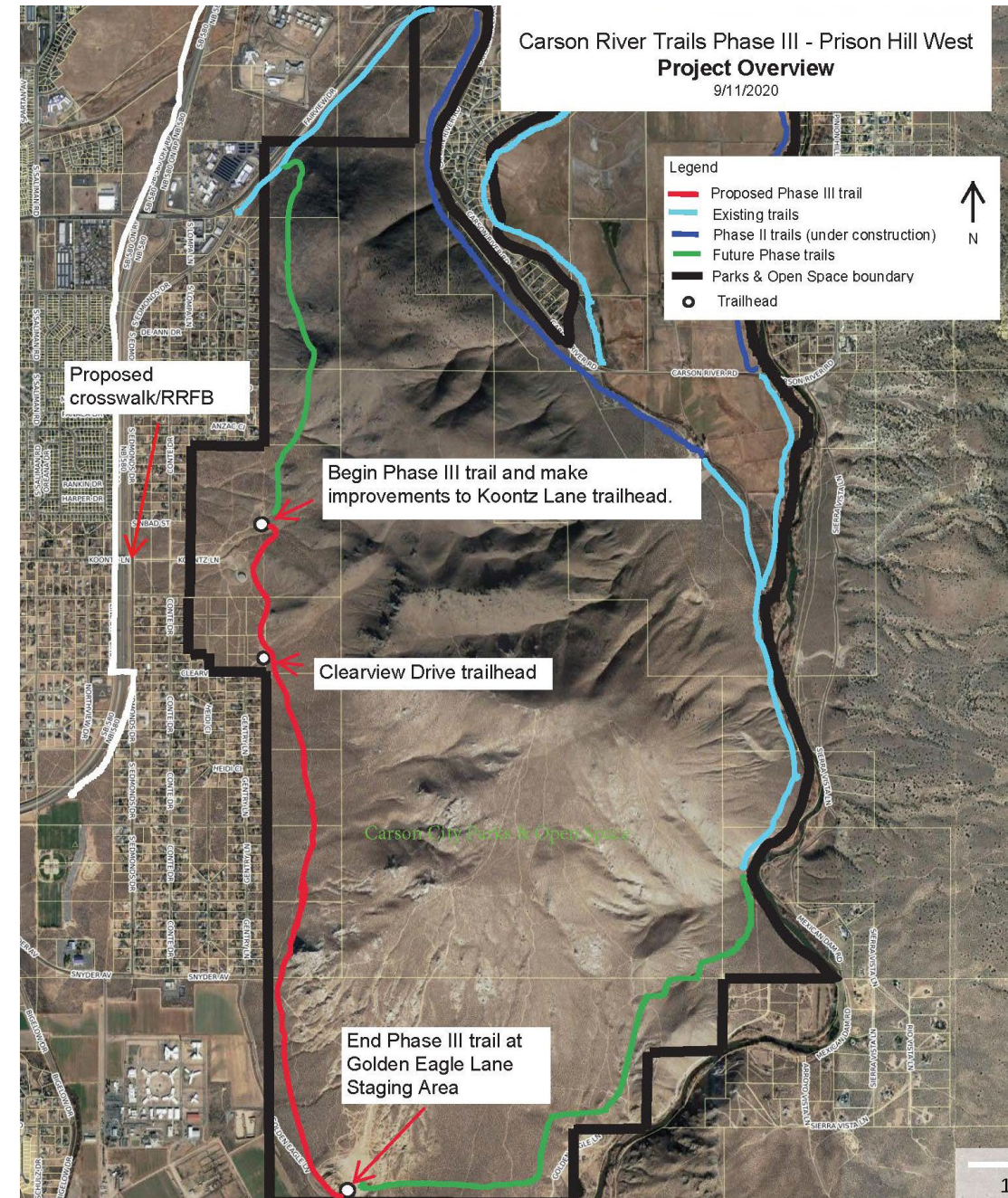
- Improvements to the existing Koontz Lane Trailhead
 - Regrade access road
 - Regrade parking area to accommodate 25-30 vehicles, EQ trailer parking, and two ADA spaces
 - Single vault toilet, ADA accessible
 - Covered picnic table, ADA accessible

➤ Trail

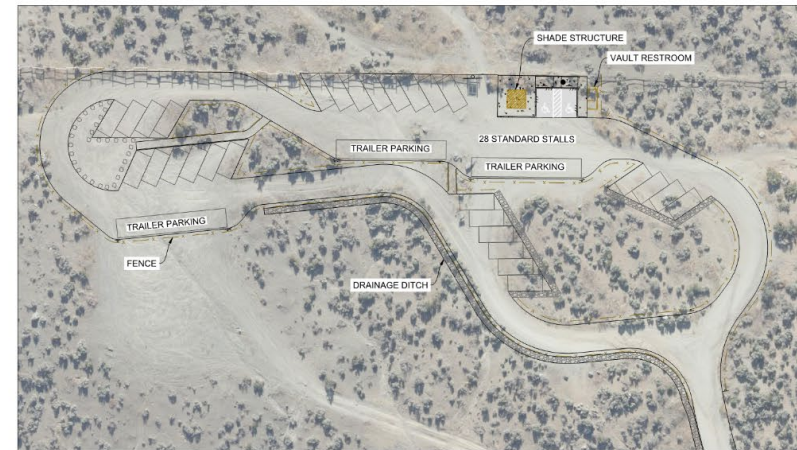
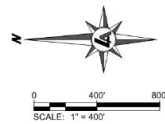
- Construct an approximately 2.5-mile, non-motorized, multi-use trail along the west side of Prison Hill connecting three trailheads.
- Compacted DG surface to support inclusive and accessible use.
- Designed for sustainability and low maintenance.

➤ Safe Street Crossing

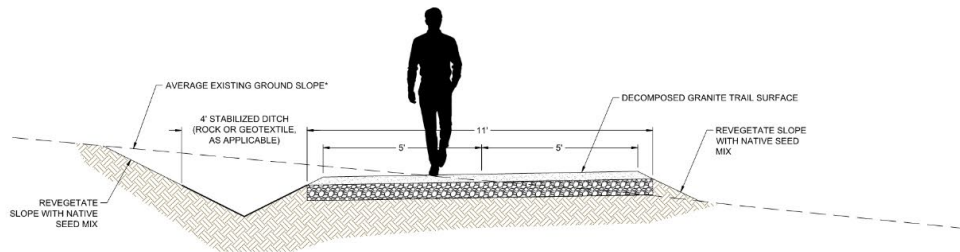
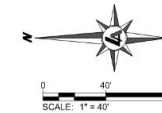
- Develop a safe street crossing of Edmonds Drive at Koontz Lane
 - Crosswalk plus user activated crossing signal lights.
 - Enhances bike/ped access from neighborhoods on the west side of Edmonds Drive with the Prison Hill Recreation Area.
 - Supports connectivity with Freeway MUP and other downtown trails



CARSON RIVER TRAIL SYSTEM - PHASE 3 PRISON HILL WEST



TRAILHEAD PARKING LOT



TYPICAL TRAIL SECTION
N.T.S.

*ACTUAL GROUND CROSS SLOPE VARIES

Funding

The project is funded through the **Southern Nevada Public Lands Management Act (SNPLMA)**, which authorizes the sale of BLM-administered federal lands in the Las Vegas Valley and the proceeds are used for federal, state and local projects that benefit communities and public lands.

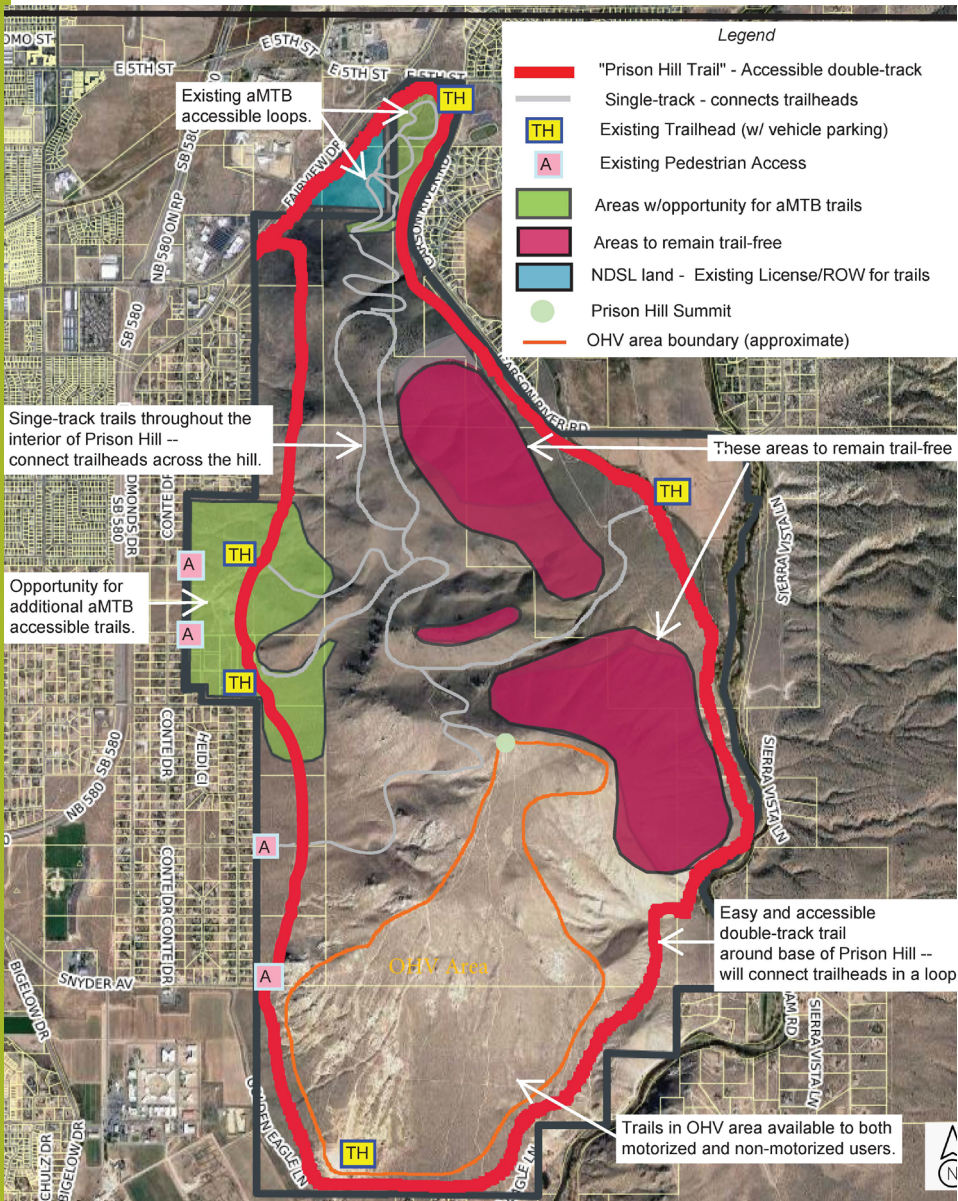
Carson City is fortunate to be eligible to apply for SNPLMA funding under the Parks, Trails and Natural Areas (PTNA) category. The funds cannot be used for other purposes.

If Carson City did not apply for these funds, then the money would go to another community.

There is no cash match.

Project History and Planning

- **1995 - Eagle Valley Trail Plan** – Identified a loop trail circumnavigating Prison Hill
- **2006 - Unified Pathways Master Plan (UPMP) (Updated 2018)** – Envisioned a trail circling Prison Hill
- **2006 – Carson City Master Plan** – Guiding Principal 12 states, “Carson City is committed to shared use of most trail corridors...” and, “The City will also seek to provide access to all feasible portions of the pathway system and open space areas for persons with disabilities.”
- **2008 - Silver Saddle Ranch & Carson River Charrette** – Calls for a multi-use loop trail around Prison Hill and improvements to the Koontz Lane TH
- **2017 - Eagle Valley Trails Committee Report** – Identified desire for loop trail circling Prison Hill, recommendations incorporated into UPMP in 2018.
- **2019 - Prison Hill Recreation Area Master Plan Survey** – Solicited public input with a focus on trailheads, access points, and the Koontz Parcel.
- **2020 - Prison Hill Recreation Area Open House** – Received public input with emphasis on the Koontz Parcel.
- **2020, September 2 – Board of Supervisors authorizes submittal of nomination to SNPLMA**
- **2023, March 2 – Board of Supervisors authorizes acceptance of cooperative agreement with SNPLMA**
- **2023, May 4 - Prison Hill Master Plan adopted by Board of Supervisors** – Identifies development of the Prison Hill Trail as an accessible shared-use trail around the base of Prison Hill. Draft plans previously presented to OSAC June 15, 2020, and April 18, 2022.
- **2023, October – 30% plans presented** - Open House format in the Community Theater lobby and to Open Space Advisory Committee, and project plans posted at trailheads and on website: carson.org/trails. Updates posted on website include 90% plans and final plans.
- **2024, April 24 – Planning Commission approved a SUP**



Prison Hill Trail Planning -- Non-Motorized

Where Does This Project Fit In The Prison Hill Master Plan?

- **Prison Hill Trail** – Inclusive and accessible base trail connecting all the trailheads in a loop
 - At least one trailhead with ADA accessible restroom on each side of Prison Hill
- **Singletrack Trails** – More challenging trails connecting trailheads across the hill and providing opportunities for loops
- **aMTB Opportunities**
- **Trail-Free Zones**

Planning Considerations

- **Permits and Clearances:**

- BLM Consultation (required by SNPLMA) -Confirmed compliance with Conservation Easement.
- Section 106; consultation with Washoe Tribe; SHPO clearance.
- Authorization from Carson City Transportation Division for crosswalk and RRFB.
- Traffic Count Analysis.
- Environmental consultant confirmed no USACE permitting required.
- Special Use Permit from Planning Commission.
- SWPPP and Construction Permits will be contractor responsibility.

Planning Considerations

- Trail Width

- UPMP standards.
- Maintenance and EMS access.
- AASHTO standards.

- Drainage

- Geotechnical investigation performed.
- Hydrogeological Analysis - City provided design team with flows (10yr, 25yr, 100yr) for all drainages .
- Final design includes water management features like culverts, rock-lined ditches, catch basins, etc.

- Monkey Flower

- Reviewed Monkey Flower habitats with design team.
- Worked with design team to minimize impact to extent reasonable.
- Enhancing habitat in 114-acre Koontz parcel.

Planning Considerations – Trail Location



Access for All...

